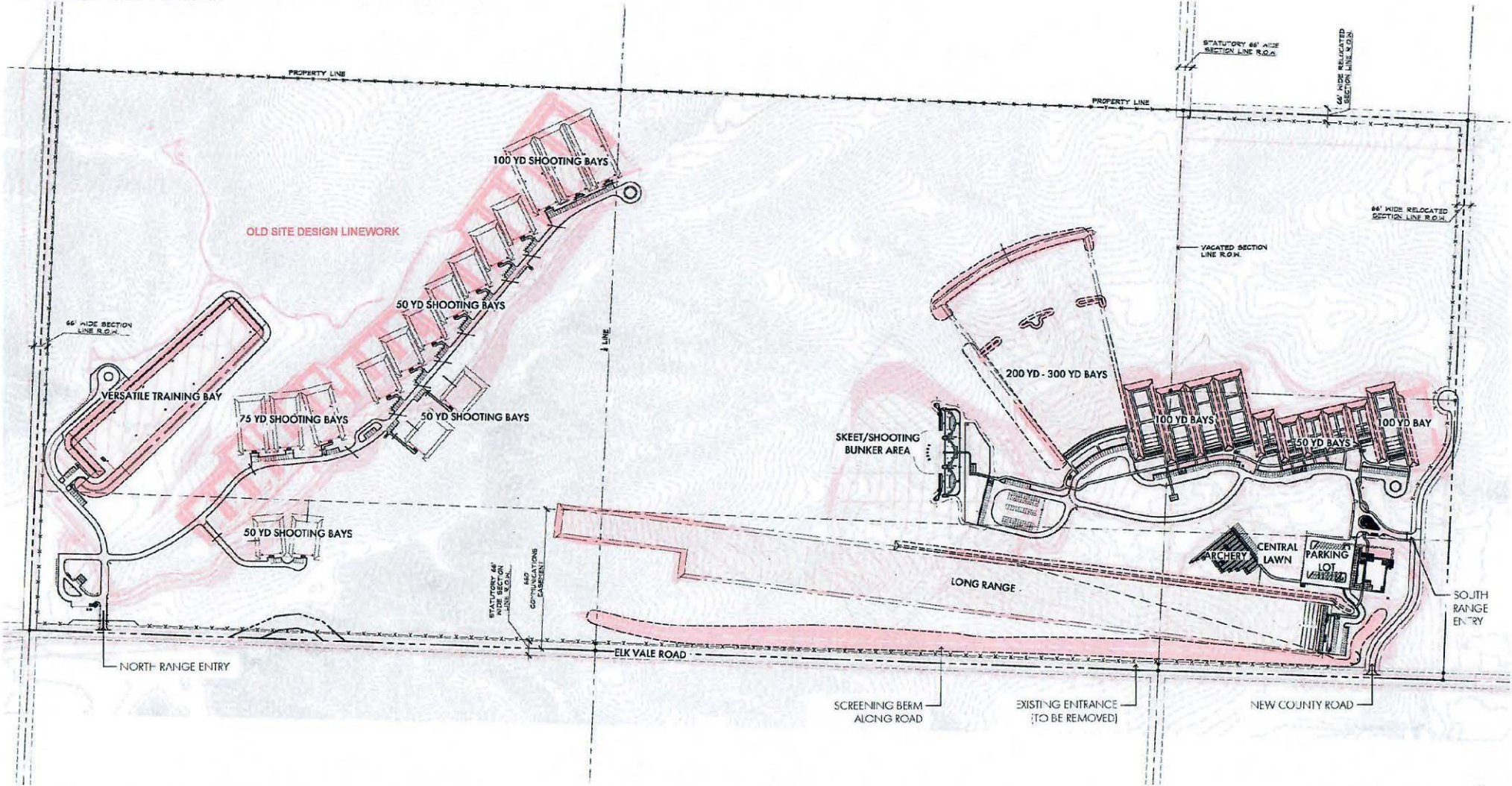
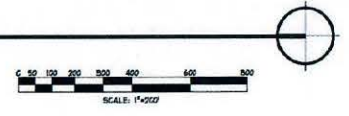


**Appendix A**  
**South Dakota Shooting Sports Complex**  
**Master Plan**

**SOUTH DAKOTA SHOOTING SPORTS COMPLEX**  
 PRELIMINARY, NOT FOR CONSTRUCTION



**OVERALL SITE PLAN - NEW VS OLD SITE DESIGN COMPARISON**



# SOUTH DAKOTA SHOOTING SPORT COMPLEX





## PROJECT SUMMARY

### PROJECT DESCRIPTION

The Game, Fish and Parks South Dakota Shooting Sport Complex aims to be the premier firearms range complex in the region. Four hundred acres of rolling topography, solitude and natural beauty offer the perfect site for sporting enthusiasts within minutes from several surrounding communities.

Organized in two separate areas (north and south), the complex offers a wider variety of options for all levels from hunters and recreational shooters to law enforcement training spaces. Designed with safety in mind, the range complex will offer people and families a world class opportunity to participate in multiple shooting sports. There is plenty of room for beginners and experts to shoot side by side with facilities for education, outreach, and organized shooting competitions. The Master Plan is presented in phases for development based on funding availability and indicating potential for future growth based on the growing needs of the sporting population.

This Master Plan is a celebration of the outdoor heritage of western South Dakota and an invitation to what lies ahead for the recruitment, retention and reactivation of shooting sports in the region.

### PROJECT GOALS

- » To provide a safe designated place for people to go.
- » To create one complex that provides all amenities.
- » To layout the range so that it is well organized and flows nicely.
- » To build a range that supports the R3 Efforts: To recruit, retain, reactivate outdoor enthusiasts.
- » To build a community partnership project.
- » To design a complex that feels convenient, safe, and easy to use - just a few minutes from surrounding communities.



"GROWING UP IN SOUTH DAKOTA, SHOOTING SPORTS WERE A BIG PART OF HOW I WAS RAISED. OUR RESIDENTS AND OUR VISITORS SHOULD HAVE ACCESS TO QUALITY SHOOTING RANGES WHERE THEY CAN LEARN SAFE AND RESPONSIBLE USE OF FIREARMS. THIS NEW PUBLIC RANGE IS JUST MINUTES FROM RAPID CITY AND WILL OFFER THE FINEST OUTDOOR SHOOTING RANGE EVER CONSTRUCTED BY GAME, FISH AND PARKS. THIS WILL PROVIDE OPPORTUNITIES SO THAT GENERATIONS TO COME CAN LEARN TO LOVE SHOOTING SPORTS JUST AS I DID."

**GOVERNOR KRISTI NOEM**



## WHY DOES SOUTH DAKOTA GAME, FISH AND PARKS CARE ABOUT SHOOTING SPORTS AND SHOOTING RANGES IN SOUTH DAKOTA?

The SD Game, Fish and Parks (GFP) has a history of promoting safe and accessible shooting sports opportunities for residents and visitors to SD. We have a commitment to providing shooting range opportunities on public lands and a shooting range grant program to assist with maintenance and development of private ranges in exchange for public access to those ranges. Currently GFP operates eighteen shooting ranges across SD.

In the late 1930s, an existing excise tax on firearms and ammunition was redirected to state fish and wildlife agencies for wildlife species restoration. What became known as the Pittman-Robertson (PR) Federal Aid in Wildlife Restoration

Act has provided over \$12 billion to states since it was put in place. While the bulk of the funding is used for wildlife management, PR funds have also been used by states to build and maintain shooting ranges. Now, with the Target Practice and Marksmanship Training Support Act signed into law in 2019, states have even more flexibility to use these funds to construct and enhance public shooting ranges. Recreational shooters are a key constituency helping to pay into the PR funding program. GFP recognizes that recreational shooters pay a large portion of excise taxes on their guns and ammunition that put funds into the PR program.

# 55%

Approximately 55% of South Dakota voters own a firearm.

Southwick Associates estimates that there are approximately **159,400 shooting sports participants in South Dakota** that spend an average of **1,336,200 days of shooting annually**. This activity is estimated to support **846 jobs** with salaries and wages totaling **\$27 million** in South Dakota.

Shooting sports in South Dakota generate an estimated...

**\$55**  
MILLION  
in retail sales

**\$6**  
MILLION  
in federal taxes  
annually

**\$4**  
MILLION  
in state and  
local taxes

In 2007, PR apportionments were approximately **\$267 million** and in 2015 increased to **\$808 million** almost entirely due to non-hunting recreational shooters.

Support for the second amendment, recreational shooting and acceptance of firearms in the public is a key factor in keeping our hunting heritage alive now and in the future.

South Dakota receives approximately **11.7 million dollars** in PR funding, which is used to wildlife management and other conservation efforts.

## POTENTIAL IMPACT

The total economic impact of the firearm and ammunition industry in the United States increased from \$19.1 billion in 2008 to \$63.5 billion in 2019, a 232 percent increase, while the total number of full-time equivalent jobs rose from approximately 166,000 to over 342,330, a 106 percent increase in that period, according to a report released by the National Shooting Sports Foundation®, the industry's trade association.

Southwick Associates' reports that Federal Aid in Wildlife Restoration excise taxes are generated by hunting related and non-hunting related activities. Non-hunting activities are generally comprised of recreational shooting, home and self-defense, firearms collecting and non-law enforcement or military work-related purchases. As of 2020, firearms represented 59.9% of all U.S. consumer sales obligated to pay into the Wildlife Restoration program. The other sources are ammunition (33.9% of taxable sales) and archery products (6.2%). Of U.S. retail firearms sales, 22.0% can be assigned to hunting purposes, and the remainder (78.0%) to non-hunting purposes. Of U.S. retail ammunition sales, 32.3% can be assigned to hunting purposes, and the remainder (67.7%) to non-hunting purposes.

The statewide average of shooting sport participants in South Dakota is 5.55% of the total population. One of the goals of the South Dakota Shooting Sports Complex is to recruit and reactivate shooting sport participants in Meade and Pennington Counties and surrounding areas to increase the percentage of shooting sport participants. With this increase we could expect approximately 865 more shooters in Pennington County and 300 more in Meade County. Shooting sport participants spend between \$100 and \$250 per month or \$1,200 - \$3,000 per year on shooting equipment, ammo, guns, etc. These numbers are considered to be low due to the current demand for and availability and prices of shooting sport products. Increasing the number of shooting sport participants in Meade and Pennington Counties would generate an estimated increase of \$503,570 in Meade County and \$1,038,000 - \$2,595,000 in Pennington County of additional money spent on shooting sports annually. Elevate Rapid City estimates that the proposed shooting sports complex will generate an additional \$2.7 million in sales at sporting goods stores in the Meade/Pennington area annually. The shooting sports complex locally will support 55 new jobs with \$1.8 million in additional payroll. They estimated an additional \$376,000 in tax payments.

The South Dakota Shooting Sports Complex will host a number of local and national shooting competitions and events which will generate significant positive economic impact to the area. As an example, Southwick Associates reported that the 2015 SSSF National Championship at the World Shooting and Recreational Complex in Sparta, Ill. contributed \$15,797,787 to the Illinois GDP, generated \$3,960,917 in tax revenues, and supported 245 jobs in the state.





# PROJECT PROGRAM

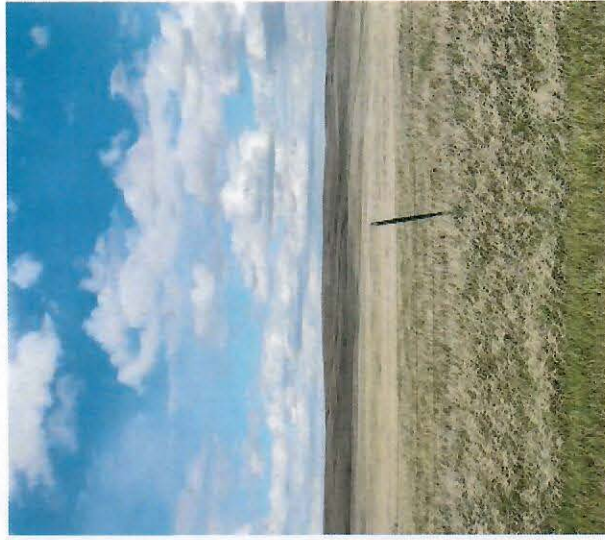
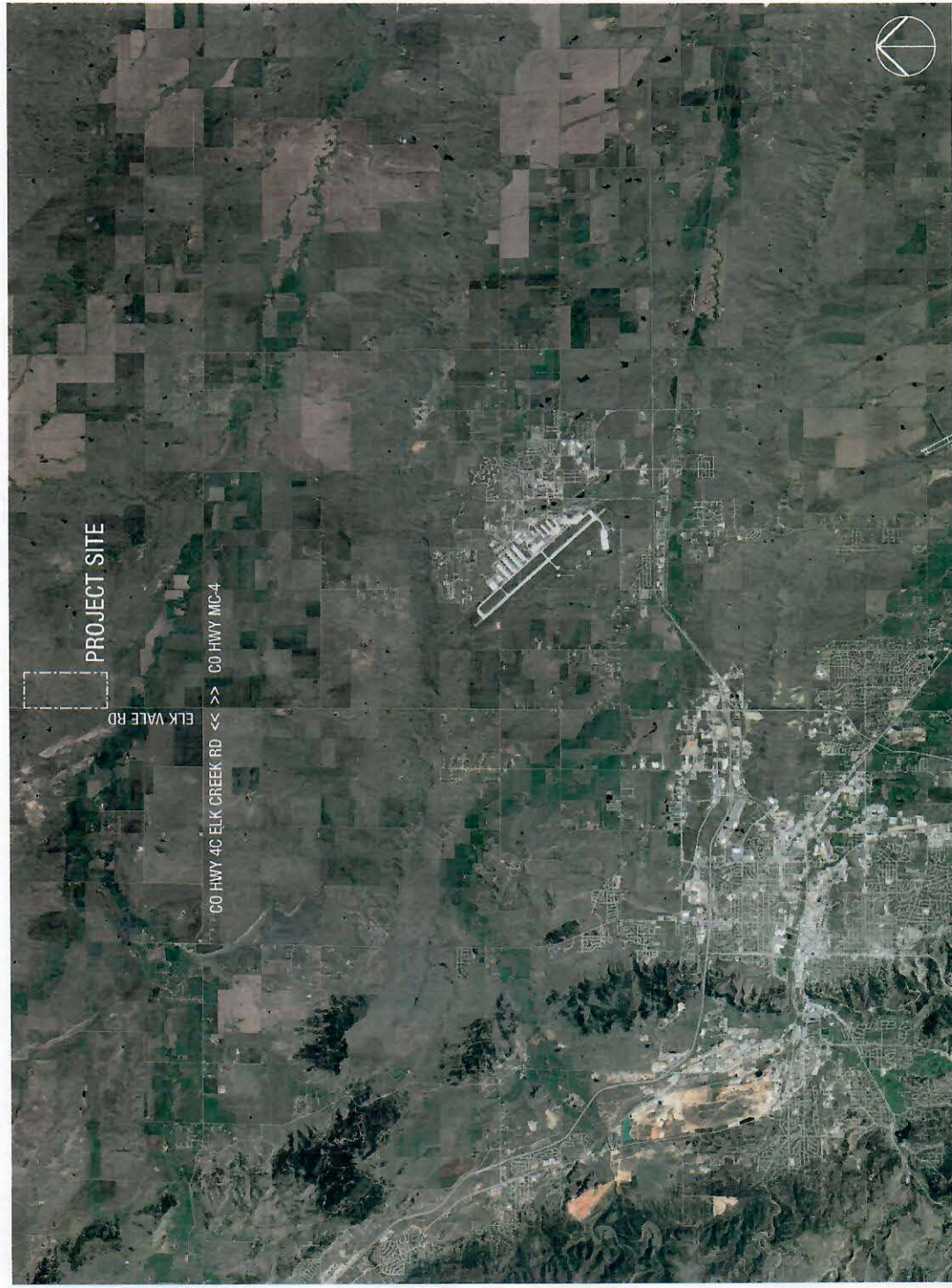


## SD Shooting Sport Complex PROJECT PROGRAM

|                                     | Area / Activity                     | Qty         | Lanes                 | Dimension                                     | Requirements  | Equipment  | Adjacencies                                    | NOTES:   |
|-------------------------------------|-------------------------------------|-------------|-----------------------|---|---|--|--|--|
| <b>BUILDING FACILITY NET AREAS:</b> |                                     |             |                       |   |   |  |  |  |
| <b>SOUTH END</b>                    |                                     |             |                       |   |   |  |  |  |
|                                     | Hunter Ed Building                  | 1           |                       | 60' x 110'                                    | Overhead door into storage (for driving equipment in / out)       |  | Good visual control of area from office window | Potential of using the space for air rifles. Will have a mezzanine, office space, bathrooms (single use - two), multiuse space for shooting lanes, classes, meetings, storage for equipment and targets. |
|                                     | 50-yard Bay                         | 5           | 5 lanes per bay       | 18 yds x 50 yds per bay                       | Side and back berms   | Two bays with shooting benches for .22, muzzleloader, etc. |  |  |
|                                     | 100-yard Bay                        | 6           | 10 lanes per bay      | 36 yds x 100 yds per bay                      | Side and back berms   | Shooting Benches   |  |  |
|                                     | 200-300 yard Shooting Area          | 1           | 40 shooting positions | 43,000-yard area                              |   | Metal targets and shooting benches                         |  |  |
|                                     | Stationary Shotgun Clay Target Area | 10 stations | 1 lane per station    | 10' x 10' shooting pad and 900' fallout range | Shooting window mounted to shooting area                          | Mounted clay bird throwers                                 |  |  |
| <b>LONG RANGE</b>                   |                                     |             |                       |   |   |  |  |  |
|                                     | Long Range                          | 1           | 20 lanes per bay      | 72 yds x 1,200 yds per bay                    | Longest target range set to 1,200-yds                             | Staggered targets from 300-yds to 1,200-yds                |  |  |
| <b>NORTH END</b>                    |                                     |             |                       |   |   |  |  |  |
|                                     | Action Bay                          | 11          | -                     | 30 yds x 50 yds per bay                       | Each action bay to have a shelter and electrical power            |  |  |  |
|                                     | Action Bay                          | 3           | -                     | 30 yds x 75 yds per bay                       | Each action bay to have a shelter and electrical power            |  |  |  |
|                                     | Action Bay                          | 3           | -                     | 30 yds x 100 yds per bay                      | Each action bay to have a shelter and electrical power            |  |  |  |
|                                     | Versatile Training Area             | 1           | -                     | 50 yds x 300 yds                              | Gravel path around the action area. Includes berming on all sides |  |  |  |
|                                     | Sporting Clays                      | 12 stations | 1 lane per station    | 10' x 10' shooting pad and 900' fallout range | Shooting window mounted to shooting area                          | Mounted clay bird throwers                                 |  |  |

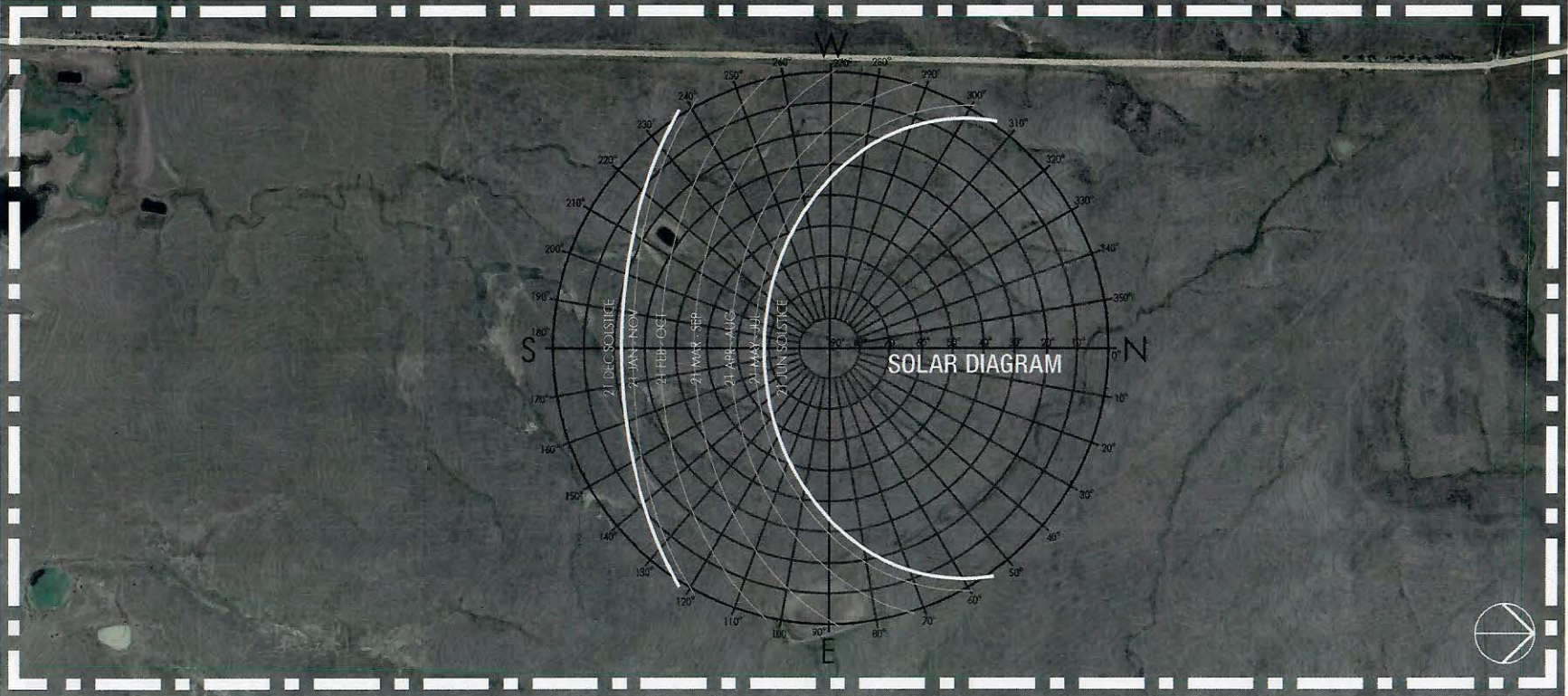


# EXISTING SITE | SITE LOCATION





# EXISTING SITE | SITE ANALYSIS



## WIND ROSES





# CASE STUDIES

## CMP TALLADEGA MARKSMANSHIP PARK

### CIVILIAN MARKSMANSHIP PROGRAM | TALLADEGA, AL

CMP is a national organization dedicated to training and educating U.S. citizens in responsibility uses of firearms and air rifles through gun safety training, marksmanship training and competitions.



## CAMEO SHOOTING AND EDUCATION COMPLEX

### CAMEO SHOOTING AND EDUCATION COMPLEX | PALISADE, CO

Thoughtfully designed by competitive shooters seeking to build a world-class shooting environment, the Cameo Shooting and Education Complex is a top destination for people from all over the world to participate in organized shooting competition.

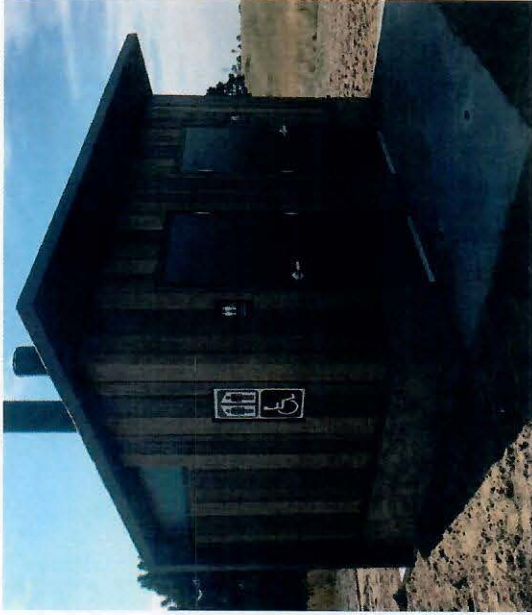
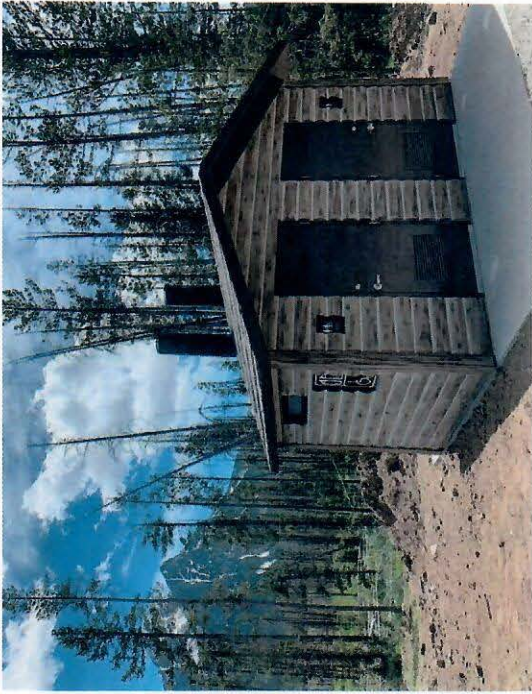
The Complex serves as an educational and training facility, where kids can learn about the safe use of firearms and law enforcement can sharpen their skills.





# CASE STUDIES

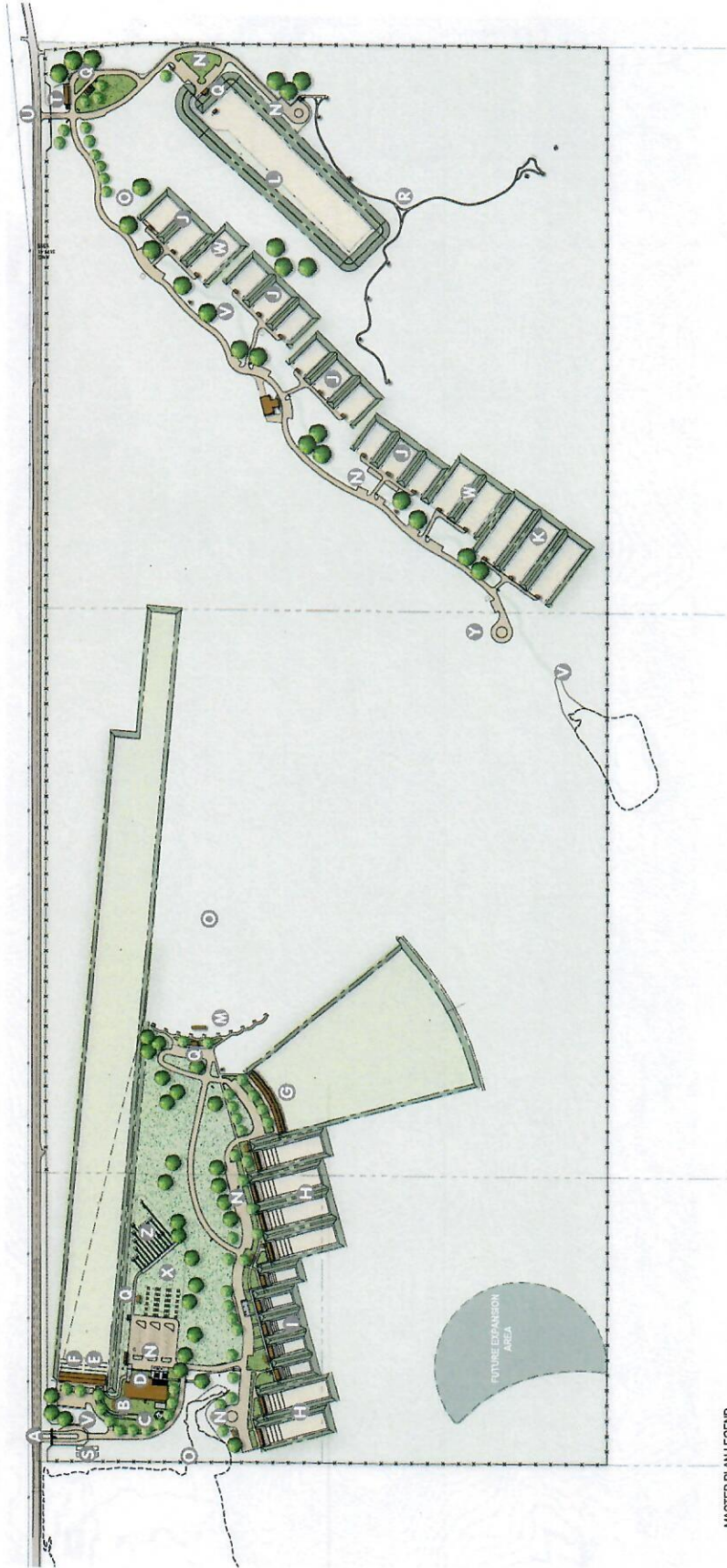
## SITE SUPPORT BUILDINGS





# MASTER PLAN

OVERALL SITE



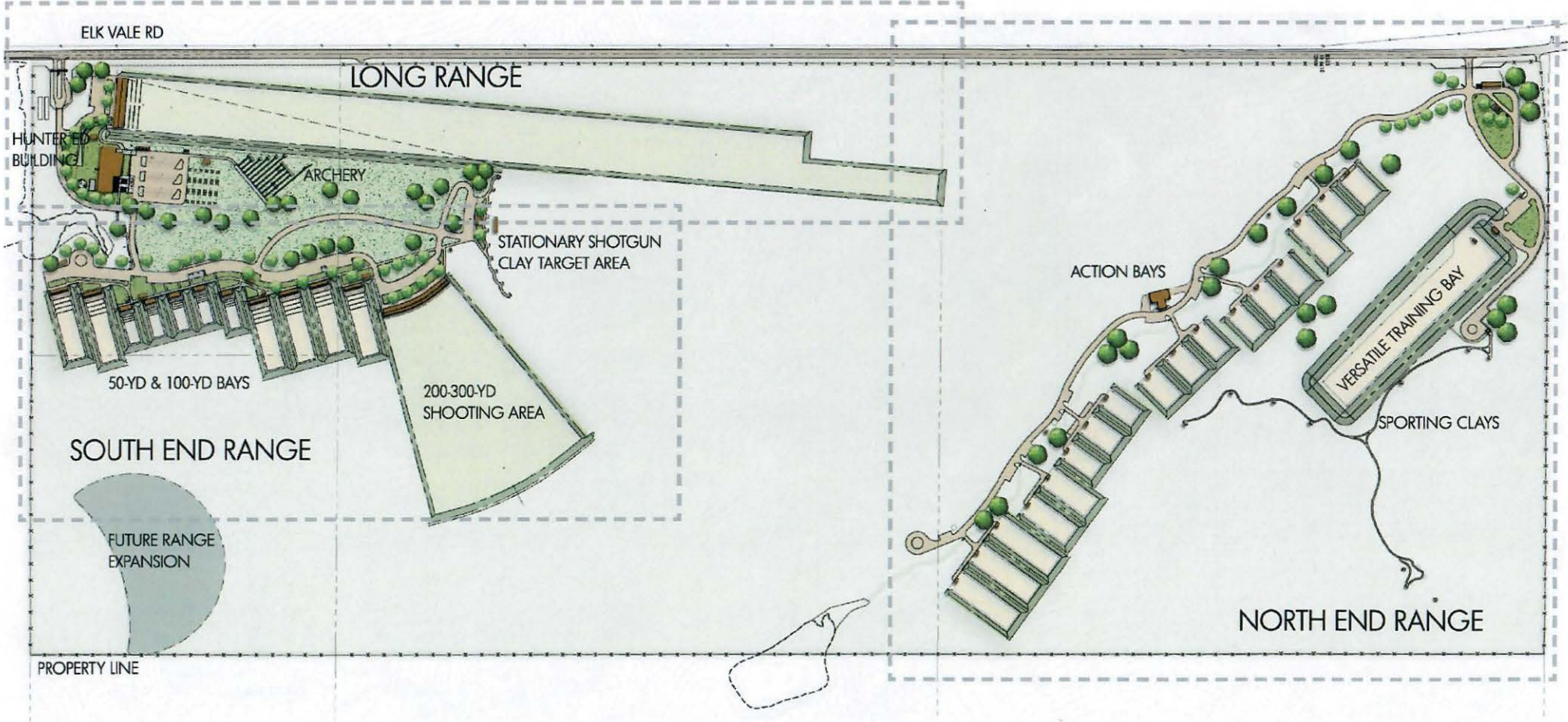
- MASTER PLAN LEGEND**
- A. SOUTH ENTRY WITH TURNAROUND
  - B. HUNTER EDUCATION BUILDING
  - C. ENTRY PATIO
  - D. PATIO
  - E. 1,200 YARD BAY
  - F. 1,000 YARD BAY
  - G. 200,000 YARD BAY
  - H. 100 YARD BAY
  - I. 50 YARD BAY
  - J. 50 YARD ACTION BAY
  - K. 100 YARD ACTION BAY
  - L. 50 X 300 YARD ACTION LAW ENFORCEMENT BAY
  - M. STATIONARY CLAY SHOOTING
  - N. PARKING
  - O. DRAINAGE AREA
  - Q. HALL SHELTER
  - R. SPORTING CLAYS
  - S. SEPTIC AREA
  - T. STORAGE SHEDS
  - U. NORTH SECURED ENTRY
  - V. SWALE
  - W. 75 YARD ACTION BAY
  - X. MULTI-USE LAWN
  - Y. TURNAROUND
  - Z. 20 LANE ARCHERY RANGE





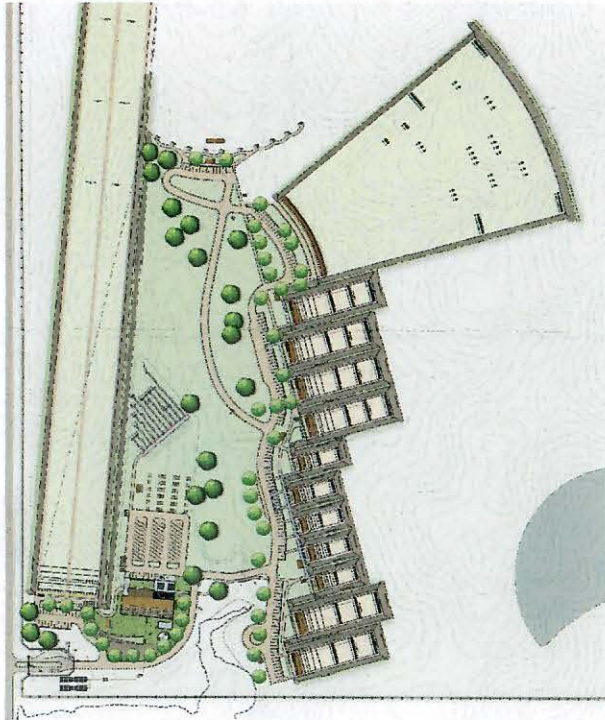
# MASTER PLAN

## PHASING PLAN





## SOUTH END RANGE



The Complex's South End Range is intended to be open to the general public. A visible entrance feature will welcome guests to the Complex and provide navigation for visitors on the different areas to be accessed. Adequate wayfinding will be incorporated into the design for ease of navigation. The range provides a wide variety of areas to cater to the varied interest of hunters and recreational shooters.

### SPECIFICATIONS

#### 50-yard Bays

- » Five (5) bays with five (5) lanes each

#### 100-yard Bays

- » Six (6) bays with ten (10) lanes each

#### 200/300-yard Shooting Area

- » Forty (40) shooting positions

#### Stationary Shotgun Clay Target Area

- » Ten (10) shooting positions with mounted clay bird throwers

### LOGISTICS

Parking lot with approx 100 stalls

Parking area convenient from each bay

Storage space

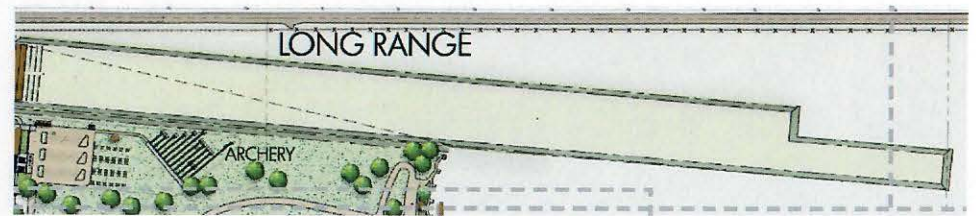
Vault toilets located throughout

### SHOOTING BAY AMENITIES

Gravel surfacing

Shade shelter outside action line

## LONG RANGE



The Long Range will share an entrance to the South End Range and will operate concurrent from other areas. This area provides the maximum shooting lengths that the site allows. The range is rotated 5° from the road in order to avoid visual distractions along the road. This area is accessible to experienced shooters. The Hunter Ed Building will provide space for a staff office with good visibility of the range for when staff is present. A Central Green space can accommodate various uses including overflow parking, but also space for outdoor events.

### SPECIFICATIONS

#### Long Range

- One (1) bay with twenty (20) lanes

- Two (2) shooting positions each lane

- F Class Position at 600-yards

#### Hunter Education Building

Flexible use building

Twelve (12) air rifle or archery lanes

### LOGISTICS

Parking lot with approx 100 stalls

Parking area convenient from each bay

Storage space

### SHOOTING BAY AMENITIES

Gravel surfacing

Shade shelter outside action line





## NORTH END RANGE



The Complex's North End Range is located in the highest point of the site, the area with the most challenging topography, lending itself nicely to the Sporting Clays area. The North End Range will have controlled access and the entrance will not be prominently noticeable from the road. Adequate way-finding will be incorporated into the design for ease of navigation. The range provides a variety of areas to cater to the varied interest of the experienced shooters, shooting clubs and law enforcement groups.

### SPECIFICATIONS

#### Action Bays

- » Eleven (11) 50-yard bays
- » Three (3) 75-yard bays
- » Three (3) 100-yard bays

#### Versatile Training Bay

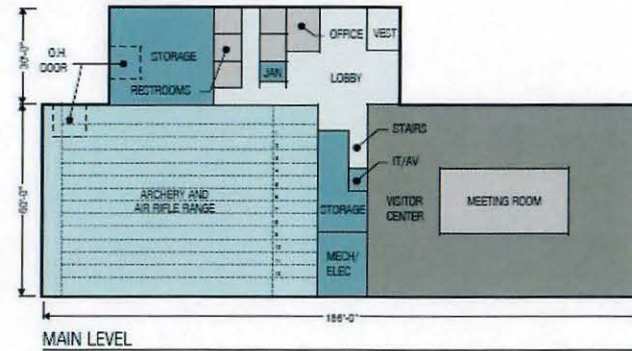
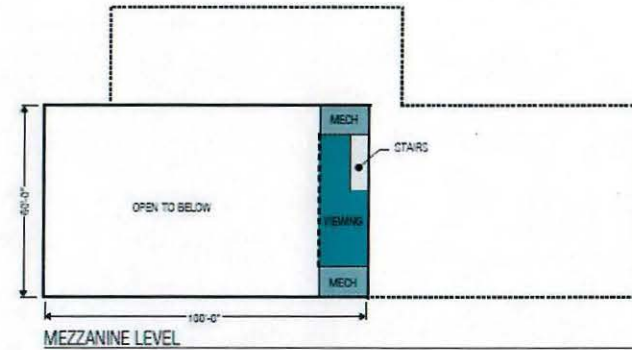
#### Sporting Clays (Shotguns)

Twelve (12) shooting positions with mounted clay bird throwers

### LOGISTICS

Parking area convenient from each bay  
Area for placement of storage sheds  
Vault toilets located throughout

## HUNTER ED BUILDING



### SPECIFICATIONS

Dimensions: 60' x 110'

### POTENTIAL USES

Hunter Education Classes  
Large / Small Meeting Capacity  
Staff Office  
Storage with direct exterior access  
Air Rifle or Archery lanes with twelve (12) shooting lanes at 20-yds

### USERS

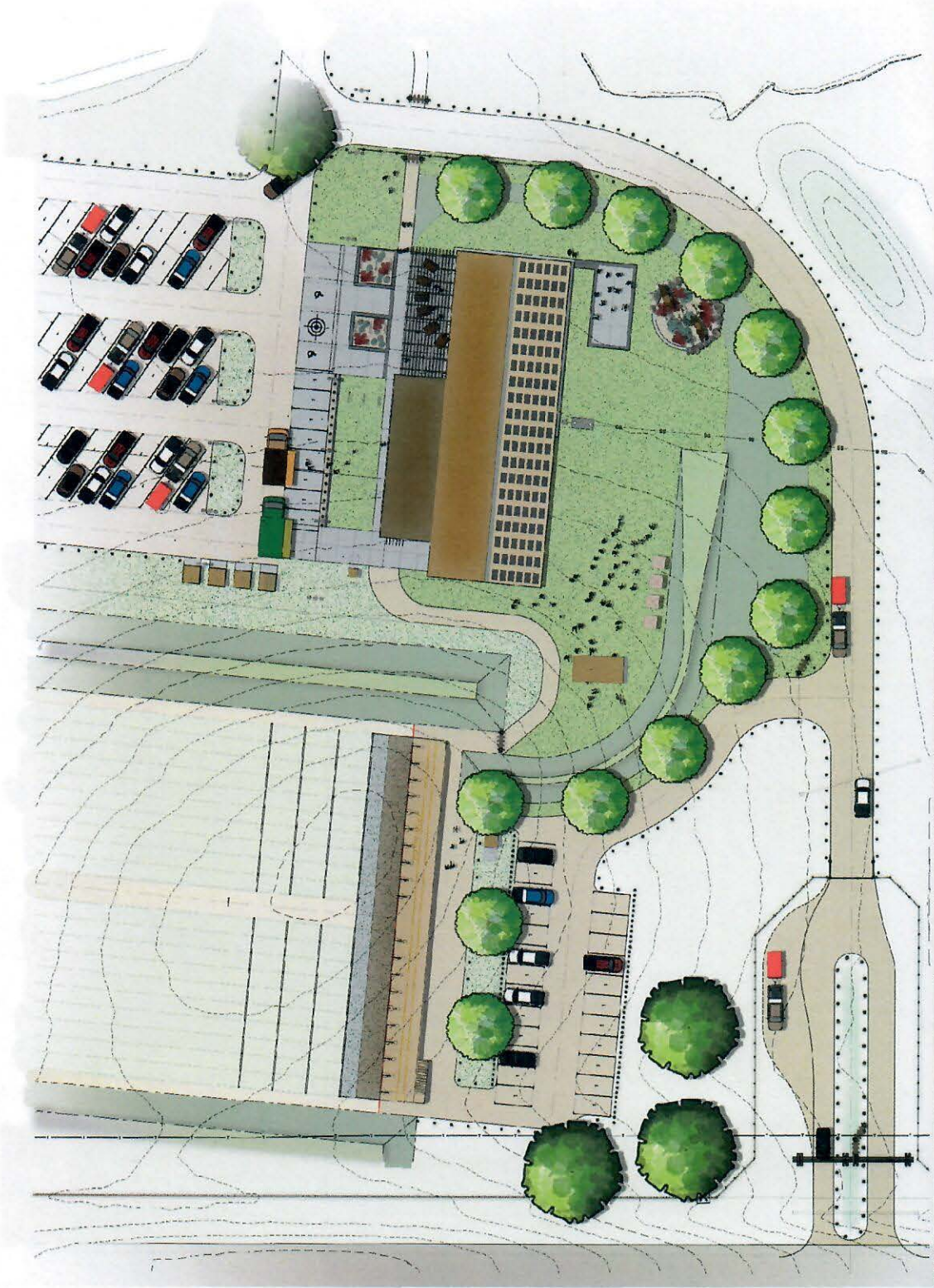
Education staff and students  
Youth Groups  
Shooting sport groups

### AMENITIES

Power  
Water  
Technology  
Views of South Range



# HUNTER ED BUILDING AND PLAZA



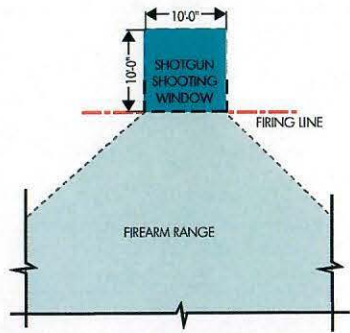


## HUNTER ED BUILDING 3D RENDERING

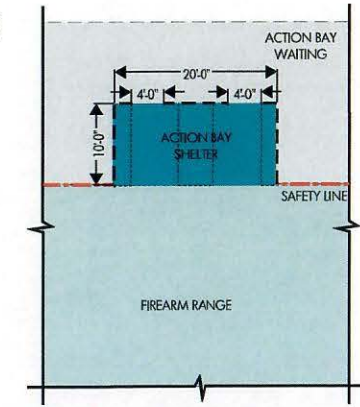




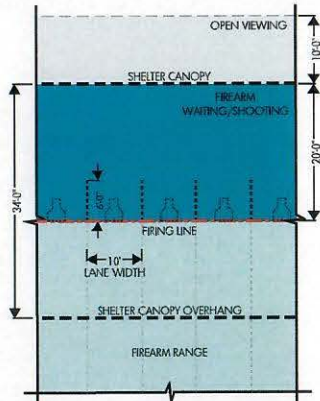
## TYPICAL RANGE SHELTERS



SHOTGUN BAY SHELTER LAYOUT



ACTION BAY SHELTER LAYOUT



RIFLE / HANDGUN BAY SHELTER LAYOUT



## TYPICAL LAYOUTS

### 50 YARD RANGE

#### LOCATION

South End Range

#### SPECIFICATIONS

Five (5) bays with five (5) lanes each  
Two (2) of the lanes with benches  
Storage shelf / table at shooting lanes

#### DIMENSIONS

Lane: 10' wide  
Side Boundary: 8' wide  
First Target Line: 25 yards  
Second Target Line: 50 yards  
Back Berm: 52 yards

#### TARGETS

Paper Targets on Target Backer

#### BERM HEIGHT

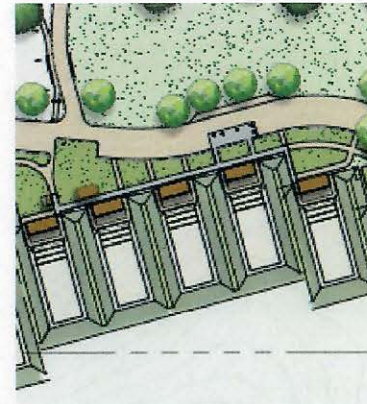
Sides: 12' minimum design height  
End: 20' minimum design height

**Primary Weapons:** Pistols, muzzle loaders, and possibly rifles for sighting in

**Age Range:** Users of all ages

**Experience Level:** Novice to Experienced

**Potential associated use:** Possibly some competition shooting and club days for local gun clubs.



### 100 YARD RANGE

#### LOCATION

South End Range

#### SPECIFICATIONS

Six (6) bays with ten (10) lanes each  
All lanes with benches - ambidextrous

#### DIMENSIONS

Lane: 10' wide  
Side Boundary: 8' wide  
First Target Line: 50 yards  
Second Target Line: 75 yards  
Third Target Line: 100 yards  
Back Berm: 106 yards

#### TARGETS

Paper Targets on Target Backer

#### BERM HEIGHT

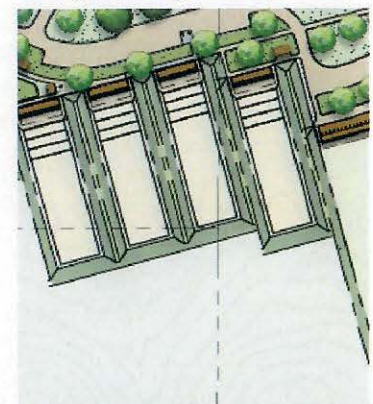
Sides: 12' minimum design height  
End: 20' minimum design height

**Primary Weapons:** Rifles

**Age Range:** Users of all ages

**Experience Level:** Novice to Experienced

**Potential associated use:** Possibly some competition shooting and club days for local gun clubs.





## TYPICAL LAYOUTS

### 200-300 YARD RANGE

#### LOCATION

South End Range

#### SPECIFICATIONS

Forty (40) shooting positions  
All lanes with benches - ambidextrous

#### DIMENSIONS

Lane: 10' wide  
Side Boundary: 8' wide  
First Target Line: 100 yards, then at each 25 yard line after  
Back Berm: 306 yards

#### TARGETS

Steel Targets

#### BERM HEIGHT

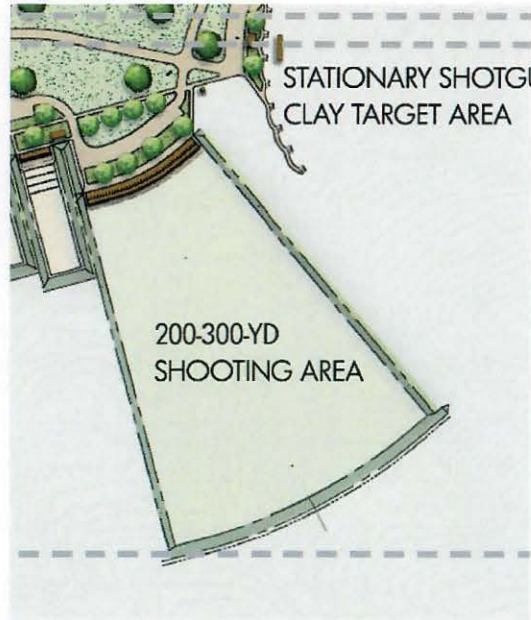
Sides: 12' minimum design height  
End: 20' minimum design height

**Primary Weapons:** Rifles

**Age Range:** Teenager and older

**Experience Level:** Novice to Experienced

**Potential associated use:** Used for long range shooting matches and precision rifle competitions.



### 1,000 AND 1,200 YARD RANGE

#### LOCATION

Long Range

#### SPECIFICATIONS

One (1) bay with twenty (20) shooting positions  
All lanes with benches - ambidextrous

#### DIMENSIONS

Lane: 10' wide  
Side Boundary: 8' wide  
First Target Line: 300 yards, then at each 100 yard line after  
Back Berm: 1,200 yards

#### TARGETS

Steel Targets

#### BERM HEIGHT

Sides: 12' minimum design height  
End: 20' minimum design height

**Primary Weapons:** Rifles

**Age Range:** Teenager and older

**Experience Level:** Experienced

**Potential associated use:** Open to the public. Used for long range shooting matches and precision rifle competitions.





# TYPICAL LAYOUTS

## STATIONARY SHOTGUN CLAY TARGET AREA

### LOCATION

South End Range

### SPECIFICATIONS

Ten (10) shooting locations  
Clay bird throwers bolted down

### DIMENSIONS

10' x 10' concrete pad  
Shooting frame  
900' fall out area

### TARGETS

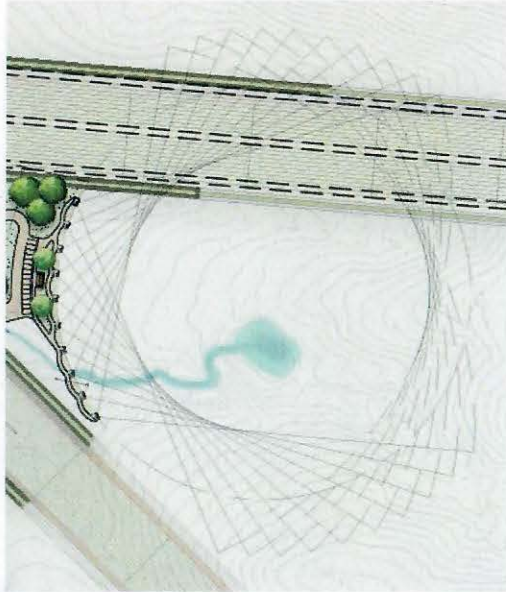
Clay birds

**Primary Weapons:** Shotguns with non-toxic ammo

**Age Range:** Users of all ages

**Experience Level:** Novice to Experienced

**Potential associated use:** Used by local clubs for contests.



## ACTION BAYS

### LOCATION

North End Range

### SPECIFICATIONS

Eleven (11) bays - 50 yard length  
Three (3) bays - 75 yard length  
Three (3) bays - 100 yard length

### DIMENSIONS

Bay: 30 yards wide  
Side Boundary: 8' wide  
Targets: By user group  
Back Berm: 56 yards, 81 yards, 106 yards  
depending on bay length

### TARGETS

By user group

### BERM HEIGHT

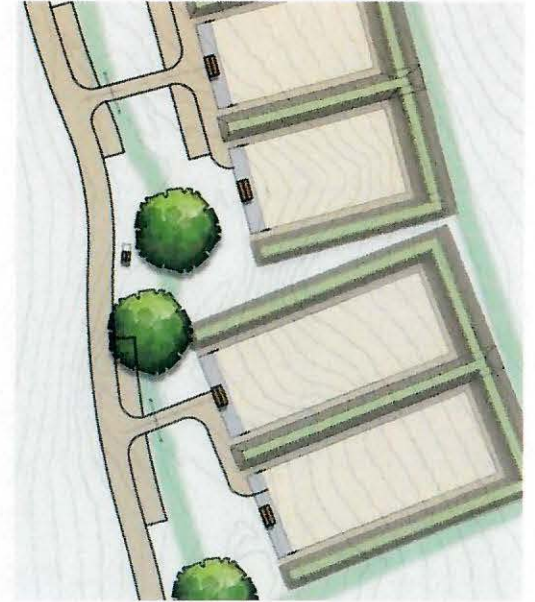
Sides: 12' minimum design height  
End: 20' minimum design height

**Primary Weapons:** Multiple Weapons

**Age Range:** Teenager and older

**Experience Level:** Experienced - Limited public access to range

**Potential Associated Use:** Primarily used by shooting groups.





# TYPICAL LAYOUTS

## VERSATILE TRAINING BAY

### LOCATION

North End Range

### SPECIFICATIONS

One (1) bay - 50 yards by 300 yards

### DIMENSIONS

Bay: 300 yards wide  
Side Boundary: 8' wide  
Back Berm: 56 yards

### TARGETS

By user group

### BERM HEIGHT

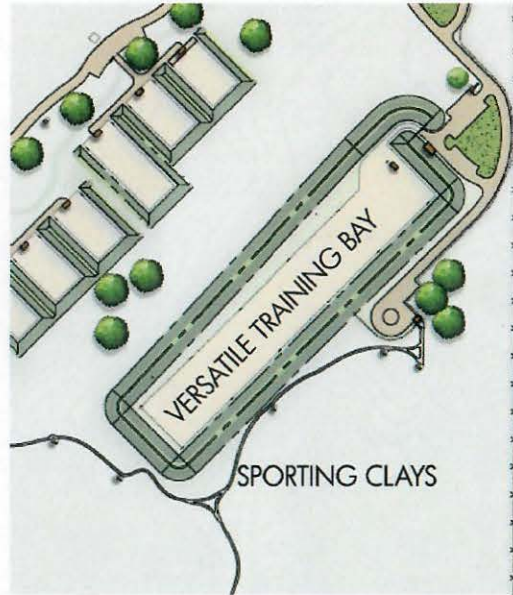
Sides: 12' minimum design height  
End: 20' minimum design height

**Primary Weapons:** Multiple Weapons

**Age Range:** Teenager and older

**Experience Level:** Experienced / Professional - Limited public access to range

**Potential Associated Use:** Multiple use area for competition matches, shooting clubs, archery, general public use and law enforcement training and qualifying area. Used by local police, sheriff, federal agencies and GFP LE.



## SPORTING CLAYS

### LOCATION

North End Range

### SPECIFICATIONS

Twelve (12) shooting locations

### DIMENSIONS

10' x 10' concrete pad  
Shooting frame  
900' fall out area

### TARGETS

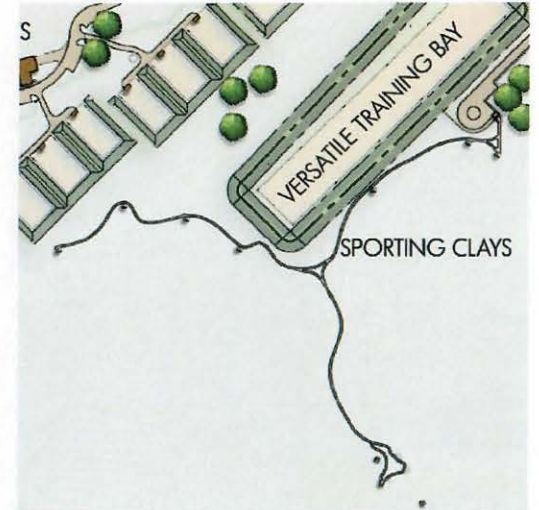
Clay birds

**Primary Weapons:** Shotguns

**Age Range:** Users of all ages

**Experience Level:** Novice to experienced - Limited public access to range

**Potential Associated Use:** Used by local clubs for contests and limited public access.





**WE SERVE AND CONNECT PEOPLE AND FAMILIES TO THE  
OUTDOORS THROUGH EFFECTIVE MANAGEMENT OF OUR STATE'S  
PARKS, FISHERIES AND WILDLIFE RESOURCES.**





**Appendix B**  
**Consultation with the State Historic  
Preservation Office**





July 28, 2023

Graham Larson  
South Dakota Department of Game, Fish and Parks  
523 E Capitol  
Pierre, SD 57501

**SECTION 106 PROJECT CONSULTATION**

Project: 230709001F – Updated Layout to the Rapid City Shooting Range AKA South Dakota Shooting Sports Complex  
Location: Meade  
USFWS - U.S. Fish and Wildlife Service

Dear Graham,

Thank you for the opportunity to comment on the above referenced project pursuant to 54 U.S.C. 306108, also known as Section 106 of the National Historic Preservation Act of 1966 (as amended). The South Dakota Office of the State Historic Preservation Officer (SHPO) still concurs with your determination regarding the effect of the proposed undertaking on the non-renewable cultural resources of South Dakota.

On July 9, 2023, SHPO received your Electronic Review & Compliance (ERC) submission, including updated plans for the Rapid City Shooting Range and the report titled "A Class III Intensive Cultural Resources Survey for the South Dakota Game, Fish and Parks Rapid City Firearms Range Complex, Meade County, South Dakota" by Matthew D. Busch of the Archaeological Research Center (CIS No. 3902). Previously, SHPO had commented on the proposed Rapid City Shooting Range and the survey results contained in Mr. Busch's report in SHPO letter 211117001F dated November 18, 2021. Your current submission indicates that changes have been proposed to the North End Shooting Range and some bays have moved closer to the boundary of 39MD1025, a cairn site which is Eligible for listing in the National Register of Historic Places. On July 19 and 20, 2023, you provided additional maps showing the changes in the proposed layout of the complex and clarifying the location of project activities in relation to site 39MD1025. In an email reply dated July 24, 2023, Adrianna Araya of the US Fish and Wildlife Service (USFWS) responded to SHPO's questions regarding the status of Tribal consultation on the updated undertaking.

Based upon the information provided, SHPO still concurs with your determination of "No Historic Properties Affected" for the proposed undertaking, provided the following stipulations are met: 1) National Register-eligible site 39MD1025 is avoided by all proposed project activities, as indicated in your current ERC submission. 2) Future development or construction at the shooting range--including additional shooting facilities, pathways, fencing, and lead reclamation activities--should avoid 39MD1025 with a minimum of a 30-meter buffer, as such future impacts to the site could be an adverse effect to the site which is reasonably foreseeable and later in time from the proposed current federal undertaking, as described in 36 C.F.R. § 800.5(a)(1). 3) All gravel necessary for the undertaking must come from an existing, commercial source. 4) Additional changes in the location and/or nature of activities from those identified in your request will require the submission of additional documentation pertaining to the identification of historic properties, as described in 36 C.F.R. § 800.4, and/or the undertaking's effects on historic properties, as described in 36 C.F.R. § 800.11.







Please note that concurrence of the SHPO does not relieve the federal agency official from consulting with other appropriate parties, as described in 36 C.F.R. § 800.2(c). Pursuant to 36 C.F.R. § 800.2(c)(2)(ii), USFWS should consult with Indian tribes regarding any concerns about historic properties and the proposed undertaking's effects on those properties. As part of the identification of historic properties, the agency official shall gather information from Indian Tribes to assist in identifying properties, including those located off tribal lands, which may be of religious and cultural significance to them and may be eligible for the National Register of Historic Places, pursuant to 36 C.F.R. § 800.4(a)(4). Given the nature of 39MD1025 and the updated project's potential encroachment on the setting of the property, USFWS should engage in meaningful consultation with our Tribal Partners. If any relevant information concerning the identification of historic properties or effects on historic properties is submitted by other consulting parties, SHPO would like the opportunity to consider this information in our comments on the proposed undertaking.

If historic properties are discovered or unanticipated effects on historic properties are found after the agency official has completed the Section 106 process, the agency official shall avoid, minimize or mitigate the adverse effects to such properties and notify the SHPO and Indian tribes that might attach religious and cultural significance to the affected property within 48 hours of the discovery, pursuant to 36 C.F.R. § 800.13.

Should you require any additional information, please contact Jenna Carlson Dietmeier at [Jenna.CarlsonDietmeier@state.sd.us](mailto:Jenna.CarlsonDietmeier@state.sd.us) or at (605)773-8370. Your concern for the non-renewable cultural heritage of our state is appreciated.

Sincerely,

A handwritten signature in blue ink that reads "Jenna Carlson Dietmeier".

Jenna Carlson Dietmeier, PhD  
Interim State Historic Preservation Officer, Review & Compliance Coordinator

CC: Adrianna Araya - US Fish and Wildlife Service





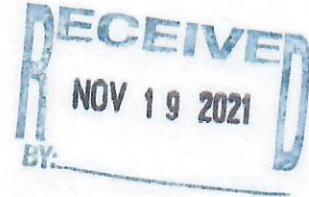
south dakota  
STATE HISTORICAL SOCIETY

DEPARTMENT OF EDUCATION



November 18, 2021

Mr. Graham Larson  
Department of Game, Fish and Parks  
Foss Building  
523 East Capitol Avenue  
Pierre, SD 57501



### SECTION 106 PROJECT CONSULTATION

Project: 211117001F – Rapid City Shooting Range Development – T4N, R8E, Sec 34; T3N, R8E, Sec 3

Location: Meade County  
(USFWS/GFP)

Dear Mr. Larson:

Thank you for the opportunity to comment on the above referenced project pursuant to Section 106 of the National Historic Preservation Act of 1966 (as amended), and the agreement titled *Programmatic Agreement By and Among the Department of Interior, the United States Fish and Wildlife Service, the Advisory Council on Historic Preservation, South Dakota Department of Game, Fish and Parks, and the South Dakota State Historic Preservation Officer regarding United States Fish and Wildlife Service Habitat Restoration Programs, Endangered Species Act Grant Program (and Other Small Grant Programs Administered by the United States Fish and Wildlife Service)*. The South Dakota Office of the State Historic Preservation Officer (SHPO) concurs with your determination regarding the effect of the proposed undertakings on the non-renewable cultural resources of South Dakota.

On November 17, 2021, we received your letter dated November 15, 2021, and the report titled "A Class III Intensive Cultural Resources Survey for the South Dakota Game, Fish, and Parks Rapid City Firearms Range Complex, Meade County, South Dakota" by Matthew D. Busch of the Archaeological Research Center (CIS No. 3902). Mr. Busch's report indicates that five archaeological sites were recorded during the survey efforts of the proposed shooting range property. Based upon the information provided, 39MD1025 should be considered Eligible for listing in the National Register of Historic Places. Additionally, 39MD1026, 39MD1027, 39MD1028, and 39MD1029 should be considered Not Eligible for listing in the National Register of Historic Places.

Therefore, SHPO concurs with your determination of "No Historic Properties Affected" for the proposed undertaking, provided the following stipulations are met: 1) Eligible site 39MD1025 is avoided by all project activities, as indicated in your letter and in Mr. Busch's report. 2) Future



development or construction at the shooting range, even that without federal funding, should avoid impacts to 39MD1025 and its immediate surrounding, as such future impacts to the site could be an adverse effect to the site which is reasonably foreseeable and later in time from the proposed current federal undertaking, as described in 36 C.F.R. § 800.5(a)(1). 3) All necessary gravel for the undertaking should come from an existing, commercial source, as indicated in your letter.

Changes in the location of project activities, such as the need to obtain any additional fill material necessary for the undertaking, or changes in the nature of project activities, such as construction activities being altered to be in close proximity to 39MD1025, will require the submission of additional documentation pursuant to 36 C.F.R. § 800.4 and 36 C.F.R. § 800.11.

If historic properties are discovered or unanticipated effects on historic properties are found after the agency official has completed the Section 106 process, the agency official shall avoid, minimize or mitigate the adverse effects to such properties and notify the SHPO and Indian tribes that might attach religious and cultural significance to the affected property within 48 hours of the discovery, pursuant to 36 C.F.R. § 800.13.

Concurrence of the SHPO does not relieve the federal agency official from consulting with other appropriate parties, as described in 36 C.F.R. § 800.2(c).

Should you require additional information, please contact Jenna Carlson Dietmeier at [Jenna.CarlsonDietmeier@state.sd.us](mailto:Jenna.CarlsonDietmeier@state.sd.us) or at (605)773-8370. Your concern for the cultural heritage of our state is greatly appreciated.

Sincerely,

Ted M. Spencer  
State Historic Preservation Officer



Jenna Carlson Dietmeier  
Review and Compliance Coordinator

CC: Jane Watts - Archaeological Research Center, Rapid City  
Brian Huot - Archaeological Research Center, Rapid City  
Cassie Vogt - Archaeological Research Center, Rapid City  
David Williams - Archaeological Research Center, Rapid City





# SOUTH DAKOTA DEPARTMENT OF GAME, FISH AND PARKS

523 EAST CAPITOL AVENUE | PIERRE, SD 57501

November 15, 2021

Jenna Carlson Dietmeier, Review and Compliance Coordinator  
State Historic Preservation Center  
Cultural Heritage Center  
900 Governor's Drive  
Pierre, SD 57501

Re: Rapid City Shooting Range Development

Dear Ms. Carlson Dietmeier:

The South Dakota Department of Game, Fish & Parks (GFP) plans to develop a shooting complex north of Rapid City, SD in Meade County. This project will be funded by utilizing Pittman-Robertson grant funding from the United States Fish and Wildlife Service's Wildlife Restoration Program.

The Rapid City Shooting Range will be located approximately 11 miles north of Rapid City, SD on Elk Vale Road/Meade County Highway 13. The construction area will be located on 400 acres of prairie land and is described legally as W ½ Section 34, Township 4N, and Range 8E and NW ¼ Section 03, Township 3N, and Range 8E in Meade County, SD. A map of the location is enclosed.

The development being proposed will include three different areas, Long-Range, South End Range, and North End Range, all located within within the legal description of the land described above.

The Long-Range will consist of a single bay that will be approximately 100' wide that will have targets scattered throughout the range ranging from 300 yards to 1,200 yards. This area will also consist of a 60'x110' Hunter Education Building, gravel parking lot to accommodate approximately 100 parking stalls, gravel access roads to the parking lot, hunter education building and shooting bay, shade shelters outside of the shooting bay, and a leveled area for a central green area.

To construct the Long-Range area, the area will be leveled and graded, and all the excess dirt will be utilized to build minimum 12' tall side berms and a minimum 20' tall end berm of the long-range shooting bay. Concrete footers and base will be poured on top of gravel to complete the foundation of the Hunter Education Building and four to eight inches of gravel will be placed and compacted to complete the parking area and access roads. The shade shelter outside of the shooting will have 10'x10'x4" concrete pads poured, and the shelter attached to the top of the concrete.





## SOUTH DAKOTA DEPARTMENT OF GAME, FISH AND PARKS

523 EAST CAPITOL AVENUE | PIERRE, SD 57501

The South End Range will consist of five 50 yard bays that are approximately 50' wide, five 100 yard bays that are approximately 100' wide, one 200/300 yard shooting area approximately 400' feet wide, two Olympic bunker trap set ups that can also be three skeet/5 stand trap area, gravel access roads and small parking lots by each bay and shooting area, concrete sidewalks and pads at each shooting bays and a 10 stands clay target area, and 13'6"x9'6"x56" concrete vault toilets at each end of the shooting areas.

To construct the South End Range, the areas will be leveled and graded, and all the excess dirt will be utilized to build minimum 12' tall side berms and minimum 20' tall end berms for each bay and the 200/300 yard shooting area. To complete the Olympic bunker trap and skeet/5 stand shooting area, the area will be leveled and the excess dirt will be utilized to fill in a manmade dugout. To complete the two bunkers for the Olympic trap, a 10' wide x 65' long x 5' deep hole will be made. Gravel from a licensed pit will be placed approximately 4"x6" thick at the bottom of the hole. 4" thick steel reinforced concrete will then be poured to create walls. To complete the high/low skeet houses the only ground disturbance will be that we will excavate a 2' wide x 4' deep hole where footers will be poured utilizing steel reinforced concrete. Please see construction diagram. To install the concrete vault toilets, we will need to excavate holes that are approximately 13'6"x9'6"x56". Approximately 4" of gravel will placed at the bottom of the holes and a concrete vault will placed inside of the hole and a concrete house will be placed on top of the vault. The excess dirt will be utilized to back fill the hole or utilized in the berm building. Approximately 4" to 8" of gravel will be placed and compacted to form roads and parking areas for vehicles by each bay. 48"x4" concrete sidewalks and pads will be built to make the shooting areas ADA compliant.

The North End Range will consist of a leveled area for storage sheds, eleven 50 yard action bays that are approximately 90' wide, three 75 yard bays approximately 90' wide and three 100 yard bays approximately 90' wide, one versatile training bay that will be 300 yards long by 50 yards wide, a twelve spot sporting clays area, gravel roads attaching the areas with gravel parking spots by each area, and concrete vault toilets located throughout the North End Range.

To construct the North End Range, the area will be leveled and graded, and all the excess dirt will be utilized to build minimum 12' tall side berms and minimum 20' tall end berms at all the bays. To construct the sporting clays area, a gravel 48"x4" walking trail will be constructed to 12 shooting locations that have a 10'x10'x4' concrete pad with an attached clay thrower. Approximately 4" to 8" of gravel will be placed and compacted to form roads and parking areas for vehicles by each of the bays and a parking area for the sporting clays. To install the concrete vault toilets, we will need to excavate holes that are approximately 13'6"x9'6"x56". Approximately 4" of gravel will placed at the bottom of the holes and a concrete vault will placed inside of the hole and a concrete house will be placed on top of the vault. The excess dirt will be utilized to back fill the





## SOUTH DAKOTA DEPARTMENT OF GAME, FISH AND PARKS

523 EAST CAPITOL AVENUE | PIERRE, SD 57501

hole or utilized in the berm building. Approximately 4" to 8" of gravel will also be placed and compacted in a level area so storage sheds may be moved in and placed.

Sewer, water and electrical utilities will also be trenched into the area. Sewer, water, and electrical will need to go into the Hunter Education building in the Long-Range area of the shooting complex and electrical will be trenched to all shooting bays and areas for possible expansion of lights and cameras.

The gravel will be obtained from an offsite source which is an existing permitted commercial pit. This project will be advertised and bid through a competitive bidding process as required by South Dakota Law.

A search of the SDARMS Database was completed. The SDARMS Database did not produce any archaeological findings in the vicinity. South Dakota GFP contacted ARC to complete a Class I record search. That search did not find any archaeological sites, cultural resources surveys, or structures documented. A Class III intensive cultural resources survey was conducted by ARC. The investigation conducted by ARC resulted in five new archaeological sites. New site 39MD1025 is an American Indian stone cairn site which is eligible for NRHP. There were four other sites, 39MD1026, 39MD1027, 39MD1028, and 39MD1029 that were concluded to be isolated finds and are recommended Not Eligible for NRHP listing. With the current construction plans of the shooting complex, site 39MD1025 will not be disturbed. As a result of the current survey and SHPO concurs with the eligibility recommendations, ARC investigators recommend a Section 106 Finding of No Historical Properties Affected.

Given the above information, we recommend a determination of "No Historic Properties Affected". However, we will await your written concurrence or alternate recommendations.

Thank you for your review and assistance with this request.

Please contact me at 605-773-4675 if you have any questions.

Sincerely,

Graham Larson  
Grant and Loan Specialist

Enclosures: Project Location Map, A Class III Intensive Cultural Resources Survey for South Dakota Game, Fish and Parks Rapid City Firearms Range Complex, Meade County, South Dakota



**Appendix C**  
**DANR Environmental Review**  
**Correspondence**





# SOUTH DAKOTA DEPARTMENT OF GAME, FISH AND PARKS

523 EAST CAPITOL AVENUE | PIERRE, SD 57501

July 11, 2023

Baylee Hoff  
DANR Inspection, Compliance and Remediation  
523 E Capitol Ave  
Pierre, SD 57501

Re: Rapid City Shooting Range Development

Dear Ms. Hoff,

South Dakota Game, Fish and Parks is planning on constructing a shooting range on 400 acres of property approximately ten miles north of Rapid City, SD in Meade County, SD. The development of the range will consist of five 18x50 yard shooting bays, five 36x100 yard shooting bays, one 43,000 square yard shooting area, a 75x75 yard shotgun area that will include two Olympic Bunker Trap areas that can also be converted to three skeet/5-stand trap area, one 72x1200 yard shooting bay, parking area for 100 vehicles, 60'x110' multipurpose building, eleven 30x50 yard action bays, three 30x75 yard action bays, three 30x100 yard action bays, ten vault toilets, gravel roads to connect all shooting areas, one 50x300 yard versatile training bay, and steel shade canopies at every shooting bay. Please see attached drawings for more specific dimensions of all the various bays and shooting areas. I have also attached topo maps of the north end of the property and the southern end of the property. GFP will still implement EPA's BMP's for this range. GFP also has 404 permitting from the Army Corps of Engineers for crossing of wetland areas.

Please call me at 605.773.4675 or email at [graham.larson@state.sd.us](mailto:graham.larson@state.sd.us) if you have any questions.

Sincerely,

Graham Larson  
Assistant Federal Aid Coordinator  
Division of Wildlife

Enclosures  
Updated South End Shooting Range drawings  
Updated North End Shooting Range drawing  
South End Topo  
North End Topo





**DEPARTMENT of AGRICULTURE  
and NATURAL RESOURCES**

JOE FOSS BUILDING  
523 E CAPITOL AVE  
PIERRE SD 57501-3182  
danr.sd.gov

July 27, 2023

Graham Larson  
SD Game, Fish, and Parks  
523 East Capitol Avenue  
Pierre, SD 57501

Subject: Environmental Review- Rapid City Shooting Range

Dear Mr. Larson:

The South Dakota Department of Agriculture and Natural Resources (DANR) has reviewed the above-referenced project for potential impacts to natural resources. Based on the information submitted in your e-mail dated July 11, 2023, DANR has the following comments and permitting requirements.

***Tanks and Spills***

There have been numerous petroleum and other chemical releases throughout the state. However, a review of our records indicates no known releases have occurred within the project area. A review of our records for registered storage tanks also shows no known tanks within the project area. Please be aware that while we make efforts to provide and maintain accurate data, the location information provided to us is occasionally inaccurate or incomplete. Additional information about registered tanks and reported releases in South Dakota may be obtained at the following website <https://apps.sd.gov/NR42InteractiveMap#>

Since no registered tanks or known spills were found in the project area, it is unlikely that you will discover contaminated material. However, if contamination is discovered or occurs during construction, it must immediately be reported to DANR at 605-773-3296. Any contaminated soil should be segregated from clean soil and sampled to determine disposal requirements. Any material to be placed in a location where it will be in contact with contaminated soil or ground water should be evaluated to determine if it is compatible with the contaminant. If you have any questions, please contact Baylee Hoff at [baylee.hoff@state.sd.us](mailto:baylee.hoff@state.sd.us) or (605) 773-3296.

***Solid and Hazardous Waste***

Some solid waste may be generated during this project. Any solid waste generated that will not be reused in some beneficial manner must be disposed or managed at a



permitted solid waste facility. Regional landfills able to accept all solid waste generated are listed on our website: <https://apps.sd.gov/NR60SolidWaste/main.html#>. Only Regional landfills are permitted to accept all wastes generated. If you have any questions, please contact Waste Management at 605-773-3153.

It is not expected that any hazardous wastes sites will be encountered within the vicinity of your project area. However, if road construction is planned for areas within a city or town, the contractor should contact this Department prior to construction. Should any hazardous waste be generated during the implementation of this project, the generator must abide by all applicable hazardous waste regulations. To determine whether your project may generate hazardous waste, visit: <https://www.epa.gov/hwgenerators/managing-your-hazardous-waste-guide-small-businesses> . If you have any questions please contact Anthony Wagner at 605-773-3153, or [anthony.wagner@state.sd.us](mailto:anthony.wagner@state.sd.us).

Demolition or renovation of a building structure may be subject to the South Dakota asbestos requirements. If demolition or renovation is part of this construction project, or if the scope of the project changes to include demolition or renovation, please contact Anthony Wagner at 605-773-3153, or [anthony.wagner@state.sd.us](mailto:anthony.wagner@state.sd.us).

### ***Air Quality***

Based on the information provided, it appears this project will have minor impacts to air quality in South Dakota. This impact would be through source and fugitive emissions. In many cases, an air quality permit is required to operate equipment with point source emissions. A permit application can be obtained from the Air Quality or Minerals and Mining Program. Fugitive emissions, although not covered under State air quality regulations, are a common source of public concern and may be subject to local or county ordinances. Please contact your local officials to discuss requirements regarding fugitive emissions.

For further air quality information, please contact Anthony Lueck, Air Quality Program, telephone number 605-773-3151.

### ***Forestry***

Based on the information provided Resource Conservation & Forestry has determined this project will have no significant impact on the woodland/forestry resources of the area. Should changes or adjustments be made to the location of this project, please reach out to Amanda Morrison at [Amanda.morrison@state.sd.us](mailto:Amanda.morrison@state.sd.us) or (605) 394-2279.

### ***Drinking Water***

Based on the information provided, this project will not have adverse environmental effects to drinking water in this area. Should the parameters of your project change, please reach out to Mark Mayer at 605-773-6039 or [Mark.Mayer@state.sd.us](mailto:Mark.Mayer@state.sd.us).

### ***Surface Water***



The Surface Water Quality Program (SWQ) has reviewed your request for comments letter. Based on the information provided, SWQ has the following comments:

1. At a minimum and regardless of project size, appropriate erosion and sediment control measures must be installed to control the discharge of pollutants from the construction site. Any construction activity that disturbs an area of one or more acres of land must have authorization under the General Permit for Storm Water Discharges Associated with Construction Activities. Contact the Department of Agriculture and Natural Resources for additional information or guidance at 1-800-SDSTORM (1-800-737-8676) or <https://danr.sd.gov/OfficeOfWater/SurfaceWaterQuality/default.aspx>.

Additionally, the shooting range facility should be designed with permanent measures to ensure that all storm water is contained and does not run off site or run to waters of the state.

2. A Surface Water Discharge permit may be required if any construction dewatering should occur as a result of this project. Please contact this office for more information.
3. Impacts to tributaries, creeks, wetlands, and lakes should be avoided by this project. These waterbodies are considered waters of the state and are protected under Administrative Rules of South Dakota (ARSD) Chapter 74:51. Special construction measures may have to be taken to ensure that water quality standards are not violated.

The design of the shooting range facility should be such that shooting is not purposefully directed over or near any waters of the state. This includes shooting using non-toxic ammunition above or near ponds or drainages.

4. The discharge of pollutants from any source, including indiscriminate use of fill material, may not cause destruction or impairment except where authorized under Section 404 of the Federal Water Pollution Control Act. Please contact the United States Army Corps of Engineers for more information 605-224-8531.

#### ***Groundwater***

Based on the information provided, this project is unlikely to have adverse effects on ground water quality provided recommended design criteria and best management practices are followed. Should the parameters of your project change, please reach out to Matt Hicks at 605-773-5337 or [Matt.Hicks@state.sd.us](mailto:Matt.Hicks@state.sd.us).

#### ***Water Rights***

If water is needed during construction that is obtained from surface or ground water, a temporary permit for the use of public water will need to be obtained. If water is supplied by a municipality or rural water system for construction purposes, no additional water permitting is required. Please contact Amanda Dewell at



[amanda.dewell@state.sd.us](mailto:amanda.dewell@state.sd.us) or (605) 773-3352 if you have any questions or find form at <https://danr.sd.gov/OfficeOfWater/WaterRights/docs/D2052LDV1-TempApp.pdf>.

In addition, it is not clear if there will be a water source at the shooting facility. A public shooting facility owned by the Department of Game, Fish and Parks would be a public recreation area. A water right permit would only have to be obtained if the pump rate from a private source such as well exceeds 18 gallons per minute. For more information on water rights permitting, please contact Ron Duvall at [ron.duvall@state.sd.us](mailto:ron.duvall@state.sd.us) or (605) 773-3352 if you have any questions.

Thank you for providing DANR the opportunity to comment on this project. If you have any questions regarding the information provided, please contact me at 605-773-3296.

Sincerely,

A handwritten signature in black ink, appearing to read "Baylee Hoff". The signature is fluid and cursive, with the first name "Baylee" being larger and more prominent than the last name "Hoff".

Baylee Hoff  
Environmental Scientist  
SD DANR- Environmental Assessment Contact  
Phone: (605) 773-3296  
Email: [Baylee.Hoff@state.sd.us](mailto:Baylee.Hoff@state.sd.us)

Cc: Eric Pearson, Meade County EM, Sturgis, SD





## SOUTH DAKOTA DEPARTMENT OF GAME, FISH AND PARKS

523 EAST CAPITOL AVENUE | PIERRE, SD 57501

October 18, 2021

Baylee Hoff  
DANR Inspection, Compliance and Remediation  
523 E Capitol Ave  
Pierre, SD 57501

Re: Rapid City Shooting Range Development

Dear Ms. Hoff,

South Dakota Game, Fish and Parks is planning on constructing a shooting range on 400 acres of property approximately ten miles north of Rapid City, SD in Meade County, SD. The development of the range will consist of six 18x50 yard shooting bays, six 36x100 yard shooting bays, one 43,000 square yard shooting area, ten 10x10 feet stationary clay target areas, one 72x1200 yard shooting bay, parking area for 100 vehicles, 60'x110' multipurpose building, eleven 30x50 yard action bays, three 30x75 yard action bays, three 30x100 yard action bays, twelve 10x10 feet sporting clay positions, ten vault toilets, gravel roads to connect all shooting areas, one 50x300 yard versatile training bay, and steel shade canopies at every shooting bay. Please see attached drawings for more specific dimensions of all the various bays and shooting area. I have also attached topo maps of the north end of the property and the southern end of the property.

Please call me at 605.773.4675 or email at [graham.larson@state.sd.us](mailto:graham.larson@state.sd.us) if you have any questions.

Sincerely,

Graham Larson  
Grant and Loan Specialist  
Division of Wildlife

Enclosures





**DEPARTMENT of AGRICULTURE  
and NATURAL RESOURCES**

JOE FOSS BUILDING  
523 E CAPITOL AVE  
PIERRE SD 57501-3182  
danr.sd.gov

November 15, 2021

Graham Larson  
SD Game, Fish, and Parks  
523 East Capitol Avenue  
Pierre, SD 57501

Subject: Environmental Review- Rapid City Shooting Range

Dear Mr. Larson:

The South Dakota Department of Agriculture and Natural Resources (DANR) has reviewed the above-referenced project for potential impacts to natural resources. Based on the information submitted in your e-mail dated October 18, 2021, DANR has the following comments and permitting requirements.

***Tanks and Spills***

There have been numerous petroleum and other chemical releases throughout the state. However, a review of our records indicates no known releases have occurred within the project area. A review of our records for registered storage tanks also shows no known tanks within the project area. Please be aware that while we make efforts to provide and maintain accurate data, the location information provided to us is occasionally inaccurate or incomplete. Additional information about registered tanks and reported releases in South Dakota may be obtained at the following website <https://apps.sd.gov/NR42InteractiveMap#>

Since no registered tanks or known spills were found in the project area, it is unlikely that you will discover contaminated material. However, if contamination is discovered or occurs during construction, it must immediately be reported to DANR at 605-773-3296. Any contaminated soil should be segregated from clean soil and sampled to determine disposal requirements. Any material to be placed in a location where it will be in contact with contaminated soil or ground water should be evaluated to determine if it is compatible with the contaminant. If you have any questions, please contact Baylee Hoff at [baylee.hoff@state.sd.us](mailto:baylee.hoff@state.sd.us) or (605) 773-3296.

***Solid and Hazardous Waste***

Some solid waste may be generated during this project. Any solid waste generated that will not be reused in some beneficial manner must be disposed or managed at a



permitted solid waste facility. Regional landfills able to accept all solid waste generated are listed on our website: <https://apps.sd.gov/NR60SolidWaste/main.html#>. Only Regional landfills are permitted to accept all wastes generated. If you have any questions, please contact Waste Management at 605-773-3153.

It is not expected that any hazardous wastes sites will be encountered within the vicinity of your project area. However, if road construction is planned for areas within a city or town, the contractor should contact this Department prior to construction. Should any hazardous waste be generated during the implementation of this project, the generator must abide by all applicable hazardous waste regulations. To determine whether your project may generate hazardous waste, visit: <https://www.epa.gov/hwgenerators/managing-your-hazardous-waste-guide-small-businesses>. If you have any questions please contact Anthony Wagner at 605-773-3153, or [anthony.wagner@state.sd.us](mailto:anthony.wagner@state.sd.us).

Demolition or renovation of a building structure may be subject to the South Dakota asbestos requirements. If demolition or renovation is part of this construction project, or if the scope of the project changes to include demolition or renovation, please contact Anthony Wagner at 605-773-3153, or [anthony.wagner@state.sd.us](mailto:anthony.wagner@state.sd.us).

#### ***Air Quality***

Based on the information provided, it appears this project will have minor impacts to air quality in South Dakota. This impact would be through source and fugitive emissions. In many cases, an air quality permit is required to operate equipment with point source emissions. A permit application can be obtained from the Air Quality or Minerals and Mining Program. Fugitive emissions, although not covered under State air quality regulations, are a common source of public concern and may be subject to local or county ordinances. Please contact your local officials to discuss requirements regarding fugitive emissions.

For further air quality information, please contact Anthony Lueck, Air Quality Program, telephone number 605-773-3151.

#### ***Drinking Water***

Based on the information provided, this project will not have adverse environmental effects to drinking water in this area. Should the parameters of your project change, please reach out to Mark Mayer at 605-773-6039 or [Mark.Mayer@state.sd.us](mailto:Mark.Mayer@state.sd.us).

#### ***Surface Water***

The Surface Water Quality Program (SWQ) has reviewed your request for comments letter. Based on the information provided, SWQ has the following comments:

1. At a minimum and regardless of project size, appropriate erosion and sediment control measures must be installed to control the discharge of pollutants from the construction site. Any construction activity that disturbs an area of one or more acres of land must have authorization under the General Permit for Storm Water



Discharges Associated with Construction Activities. Contact the Department of Agriculture and Natural Resources for additional information or guidance at 1-800-SDSTORM (1-800-737-8676) or <https://danr.sd.gov/OfficeOfWater/SurfaceWaterQuality/default.aspx>.

Additionally, the shooting range facility should be designed with permanent measures to ensure that all storm water is contained and does not run off site or run to waters of the state.

2. A Surface Water Discharge permit may be required if any construction dewatering should occur as a result of this project. Please contact this office for more information.
3. Impacts to tributaries, creeks, wetlands, and lakes should be avoided by this project. These waterbodies are considered waters of the state and are protected under Administrative Rules of South Dakota (ARSD) Chapter 74:51. Special construction measures may have to be taken to ensure that water quality standards are not violated.

The design of the shooting range facility should be such that shooting is not purposefully directed over or near any waters of the state. This includes shooting using non-toxic ammunition above or near ponds or drainages.

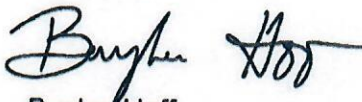
4. The discharge of pollutants from any source, including indiscriminate use of fill material, may not cause destruction or impairment except where authorized under Section 404 of the Federal Water Pollution Control Act. Please contact the United States Army Corps of Engineers for more information 605-224-8531.

#### **Groundwater**

Based on the information provided, this project is unlikely to have adverse effects on ground water quality provided recommended design criteria and best management practices are followed. Should the parameters of your project change, please reach out to Matt Hicks at 605-773-5337 or [Matt.Hicks@state.sd.us](mailto:Matt.Hicks@state.sd.us).

Thank you for providing DANR the opportunity to comment on this project. If you have any questions regarding the information provided, please contact me at 605-773-3296.

Sincerely,



Baylee Hoff  
Environmental Scientist  
SD DANR- Environmental Assessment Contact  
Phone: (605) 773-3296  
Email: Baylee.Hoff@state.sd.us



## Larson, Graham

---

**From:** Minerich, Shannon  
**Sent:** Tuesday, November 23, 2021 6:29 AM  
**To:** Larson, Graham  
**Subject:** shooting range project

Hi Graham – I reached out to our industrial permitting stormwater folks on the potential need for an Industrial Permit and subsequent possible detention ponds. Their response is that an Industrial permit is not required (but of course you can if you want to!) and that they never really specify that someone needs a retention pond. Therefore, like I mentioned in the meeting, SD DANR is not recommending GFP build retention ponds for the shooting range project – but to use BMPs to keep lead out of any water, and any of that water from getting to waters of the state. Hope this helps! Thanks. Shannopn