

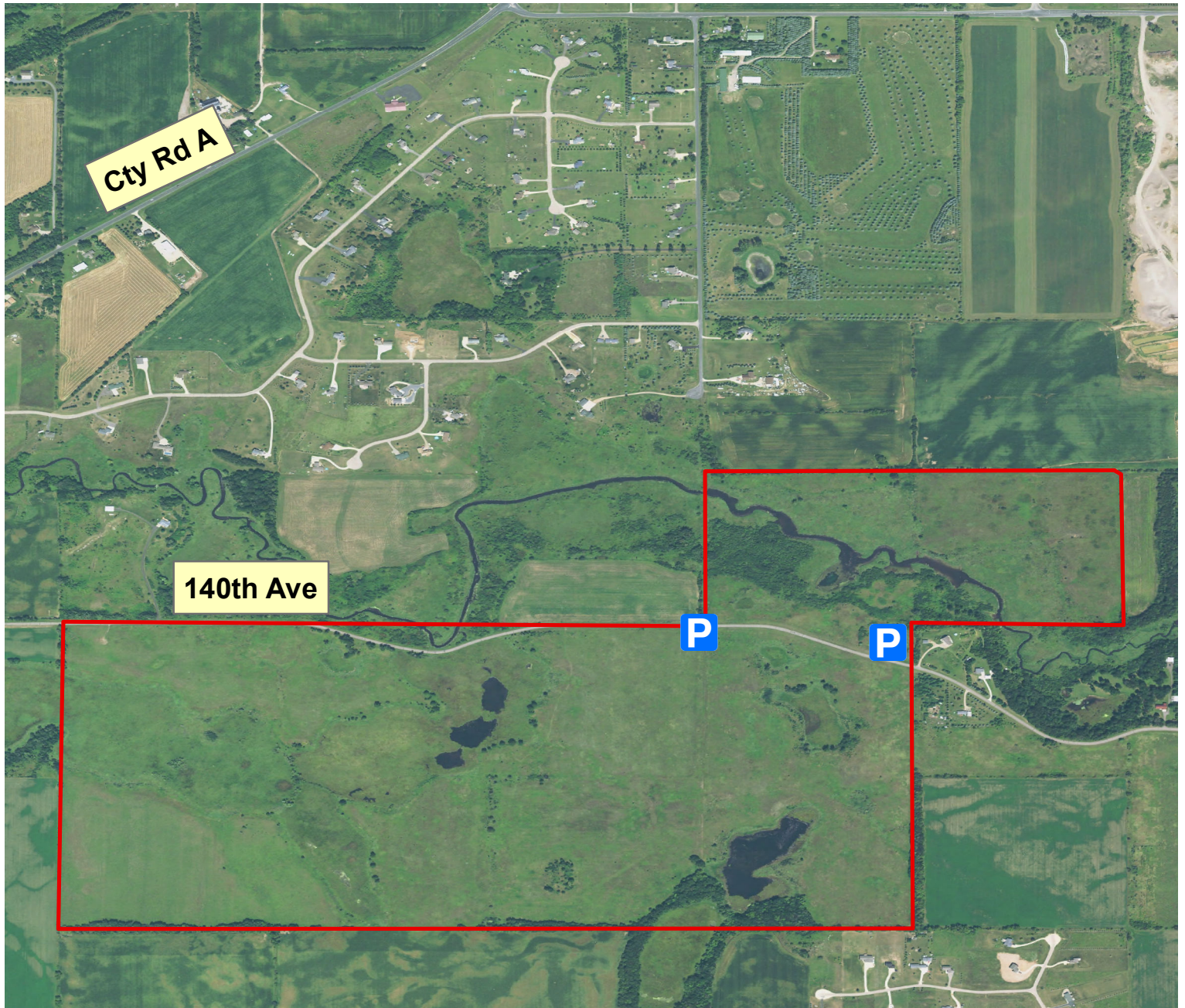


# U.S. Fish and Wildlife Service

## St. Croix Wetland Management District

Ten Mile WPA

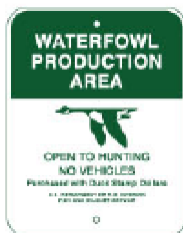
Acres: 394



### PARKING LOT LOCATIONS

1119 140th Ave & 1130 140th Ave  
New Richmond, WI

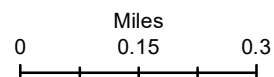
St. Croix County  
T30N-R18W, Sec21-28-29



Parking Lot



WPA Boundary



You can find additional information at:  
([https://www.fws.gov/refuge/St\\_Croix\\_WMD/](https://www.fws.gov/refuge/St_Croix_WMD/)) or call (715-246-7784).  
Boundaries shown are approximate only. Please adhere to all posted signs.