

Using Count Data to Develop a Range for the Number of Florida Panthers

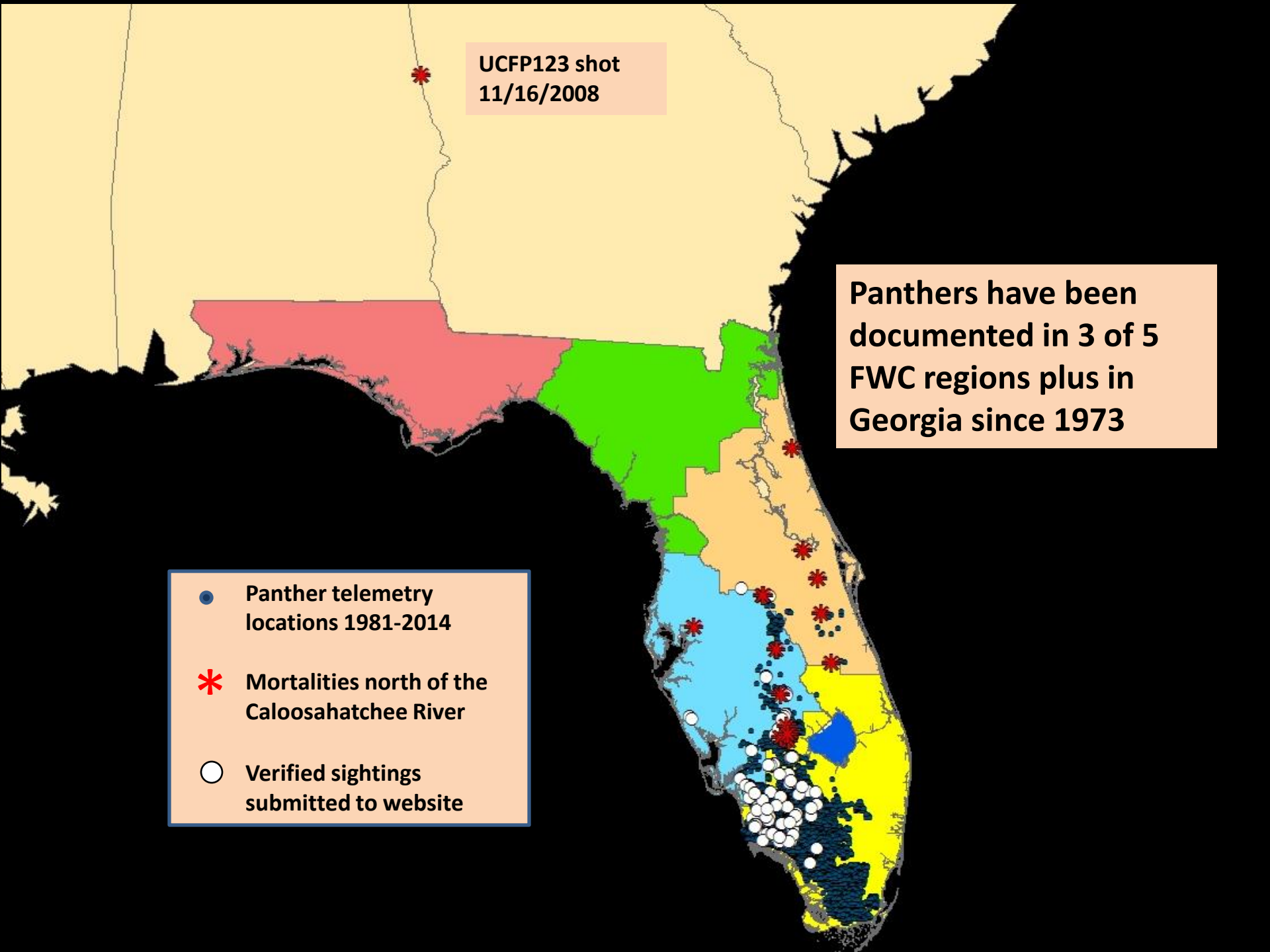


Presented by:
Darrell Land
Florida Panther Team Leader

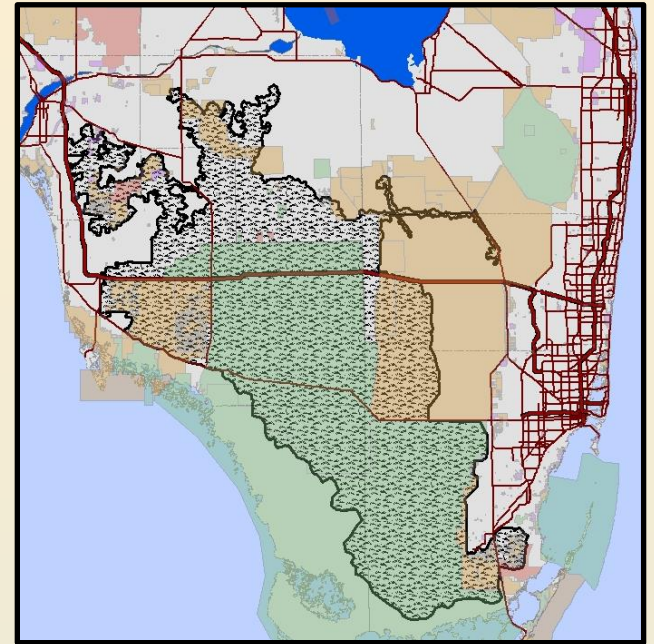
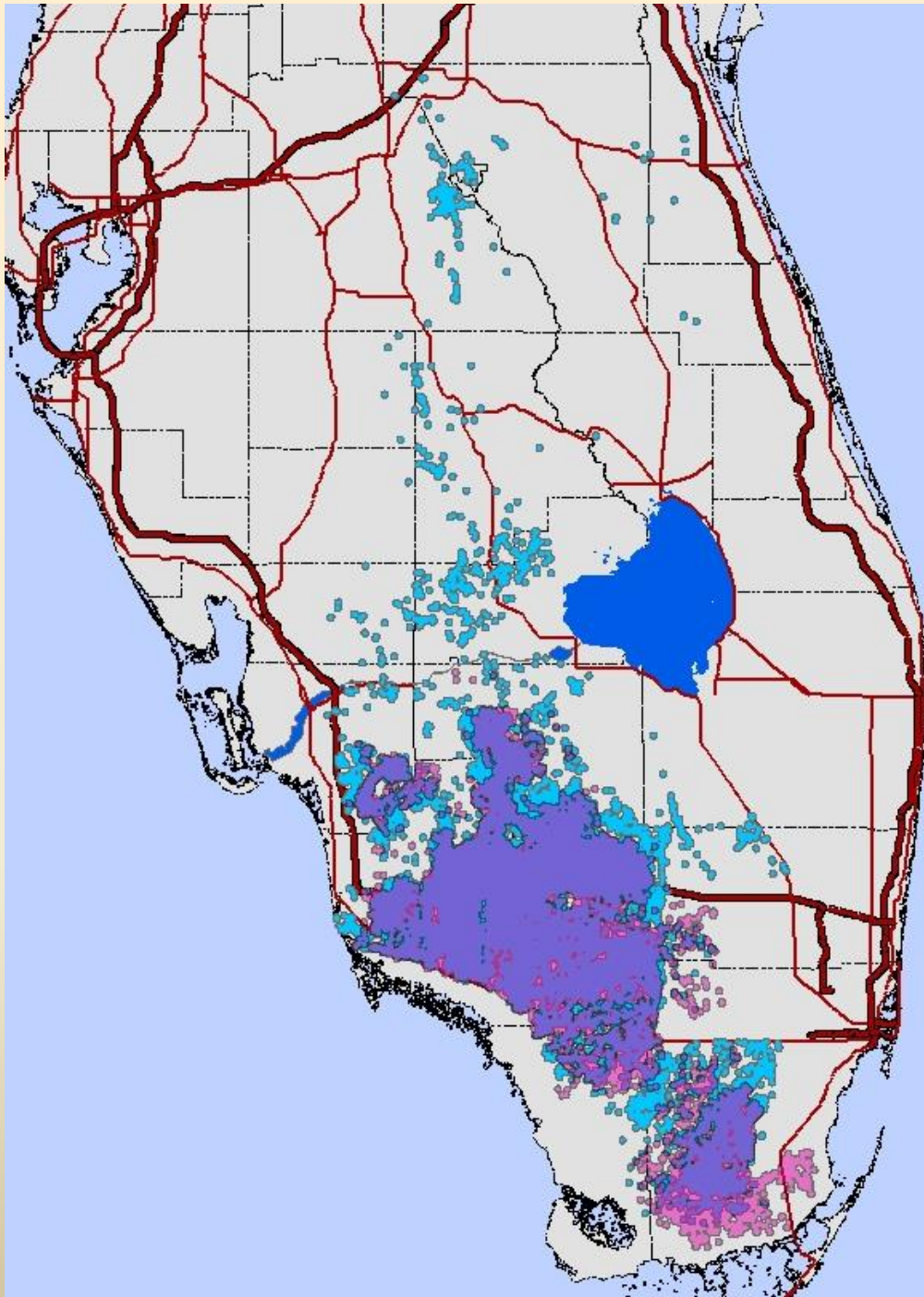
UCFP123 shot
11/16/2008

Panthers have been documented in 3 of 5 FWC regions plus in Georgia since 1973

- Panther telemetry locations 1981-2014
- * Mortalities north of the Caloosahatchee River
- Verified sightings submitted to website



FWC's range for panther numbers is restricted to Primary Zone



Primary Zone from Kautz et al. 2006

- Female Range
- Male Range
- F-M Range Overlap

Current population size



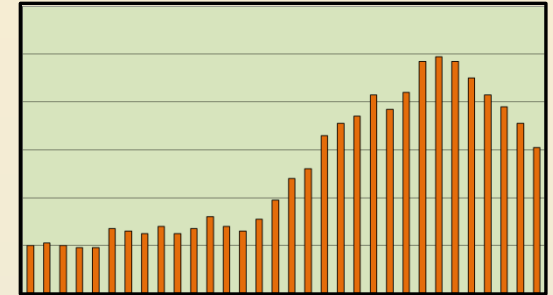
100-180 adult panthers in Primary Zone

How did we select 100 as the lower end of the population range?

We Used:



FWC's minimum number of panthers known to be alive by year



Rancher's Supply, Inc. – Florida Panther Annual Counts

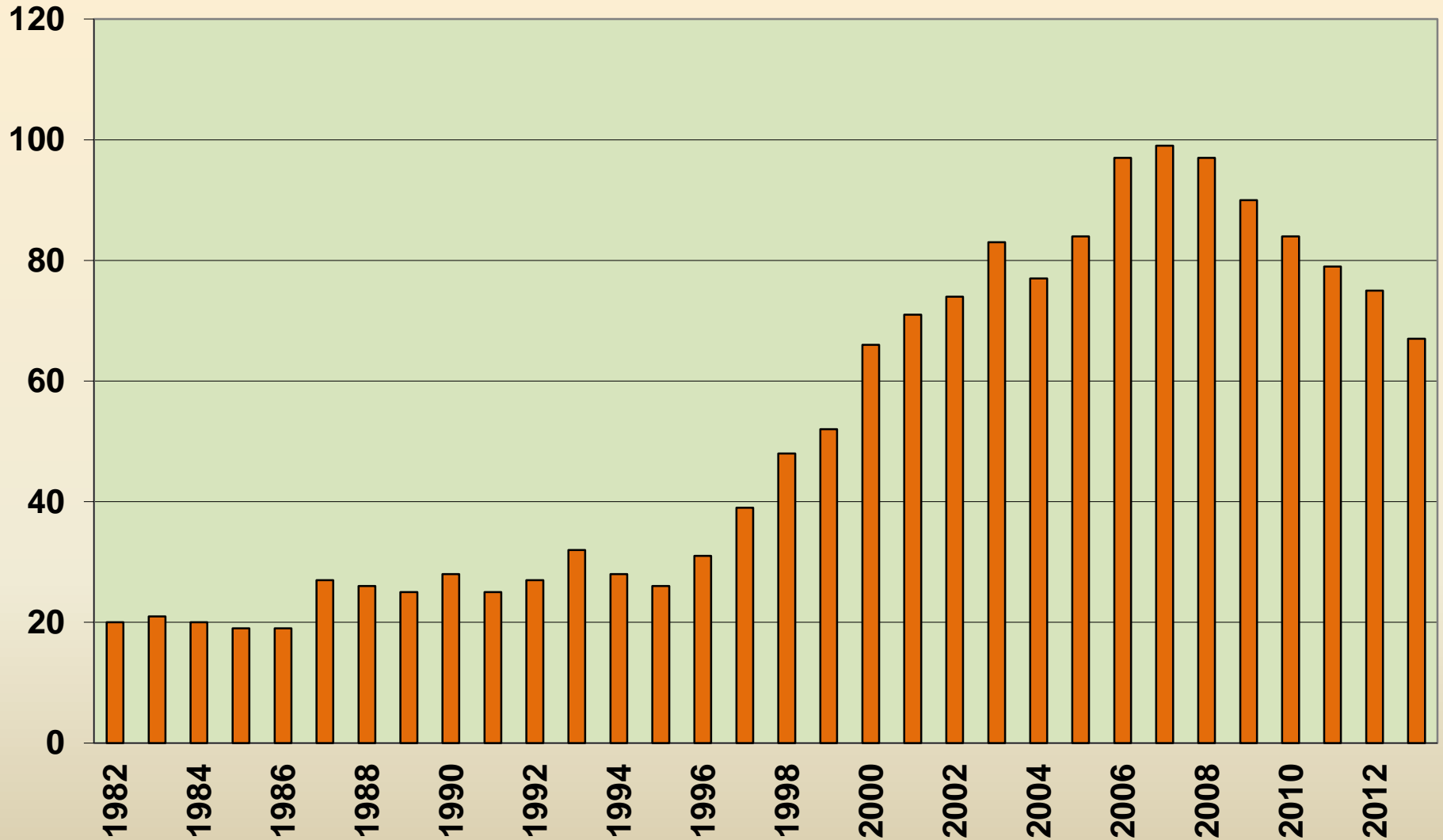


FWC's Minimum Number of Panthers Alive by Year (at least 1 year of age in a given year)

	2004	2005	2006	2007	2008	2009	2010	2011	2012	2013	2014		Panther	Age Today	Year Born
								1	1	1	1		P1	5	2010
											1		P2	2	2013
						1	1	1	1	1	1		P3	7	2008
		1	1	1	1	1	1	1	1				P4	Died 2012	2004
Total	0	1	1	1	1	2	2	3	3	2	3				

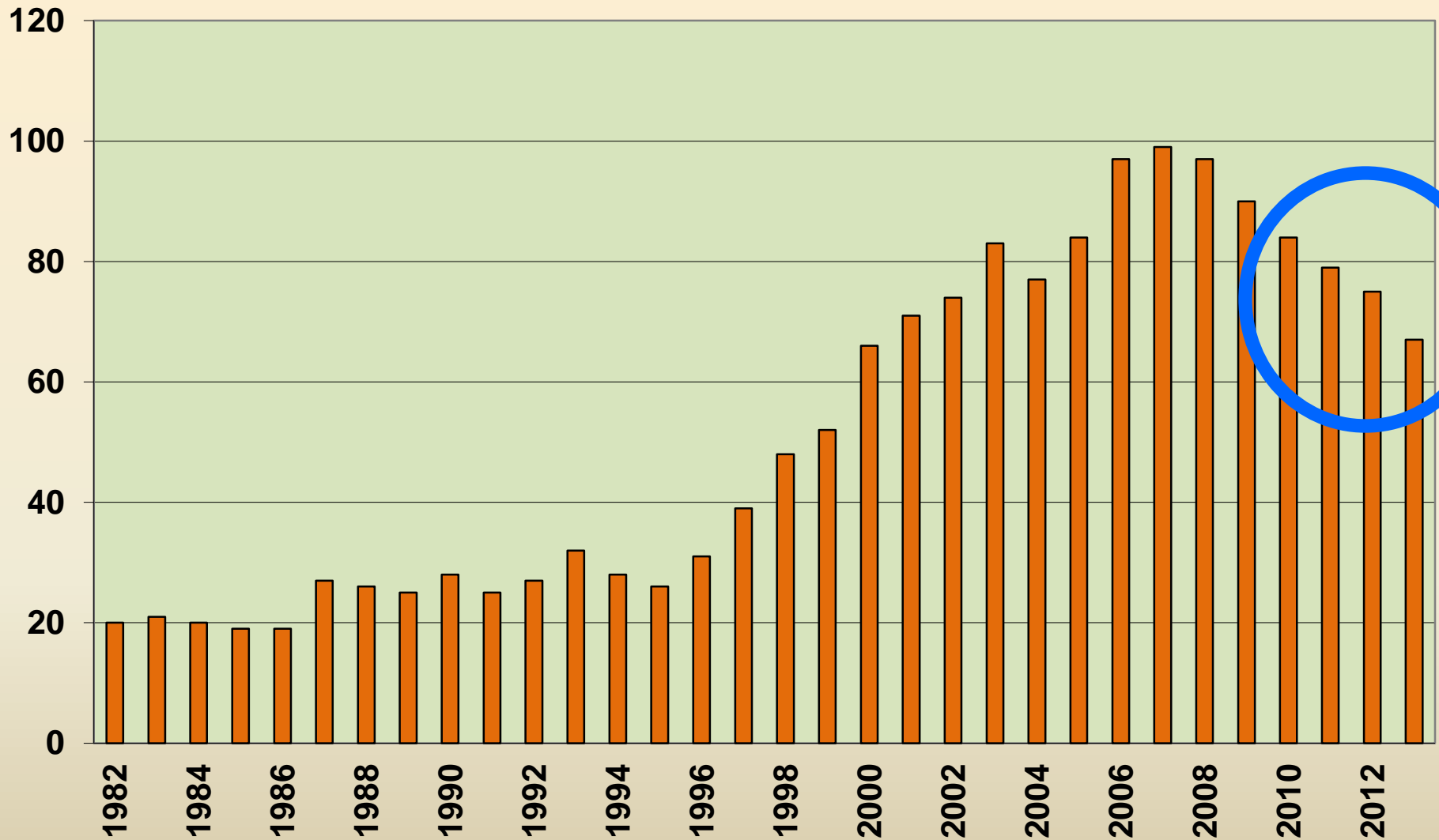
Includes both live-caught, radiocollared panthers and panthers discovered dead (typically road kills)

Minimum Number of Panthers Known to be Alive by Year



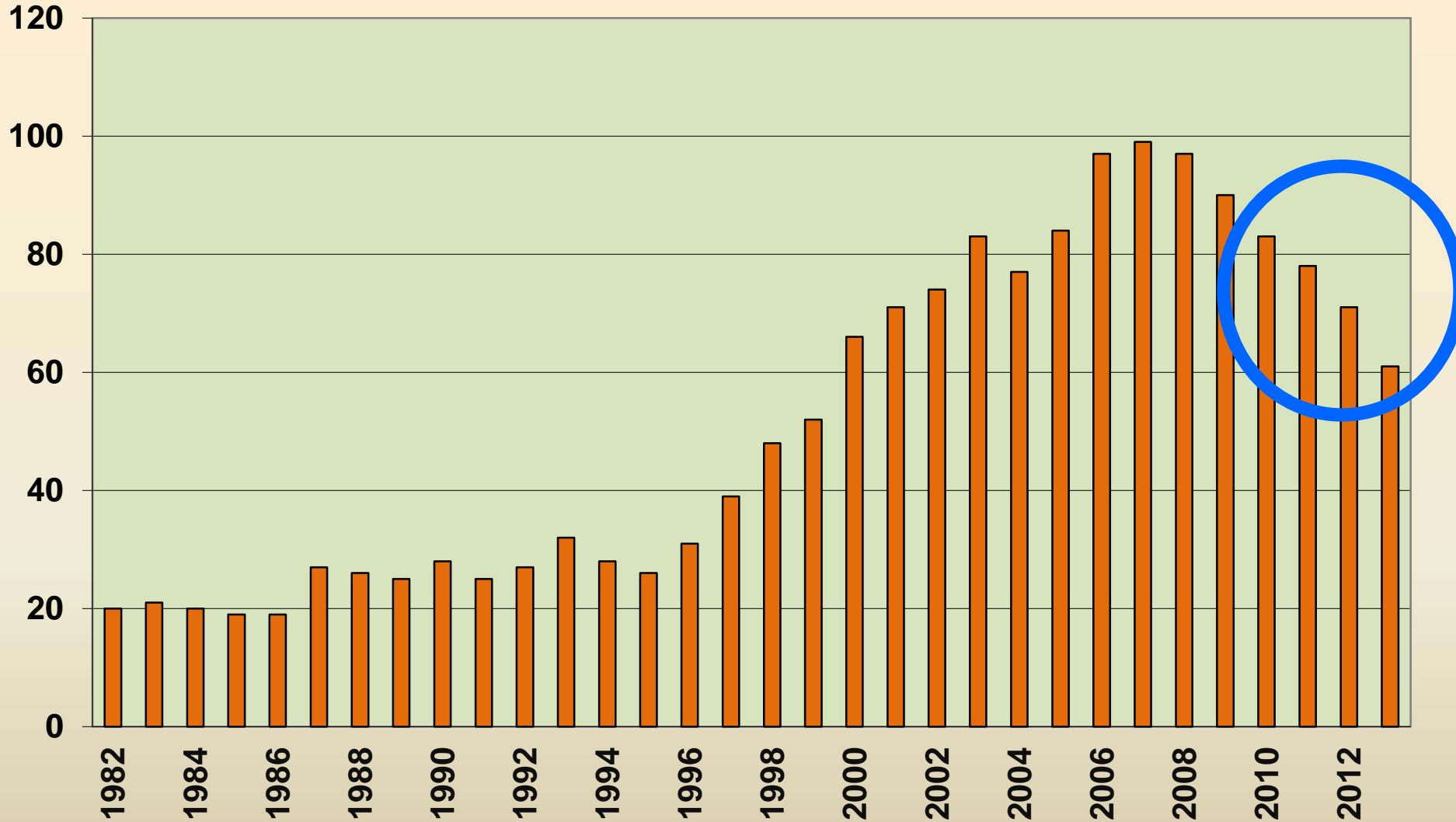
includes both live-captured panthers (n=232) and panthers discovered at death (n=220)

Minimum Number of Panthers Known to be Alive by Year

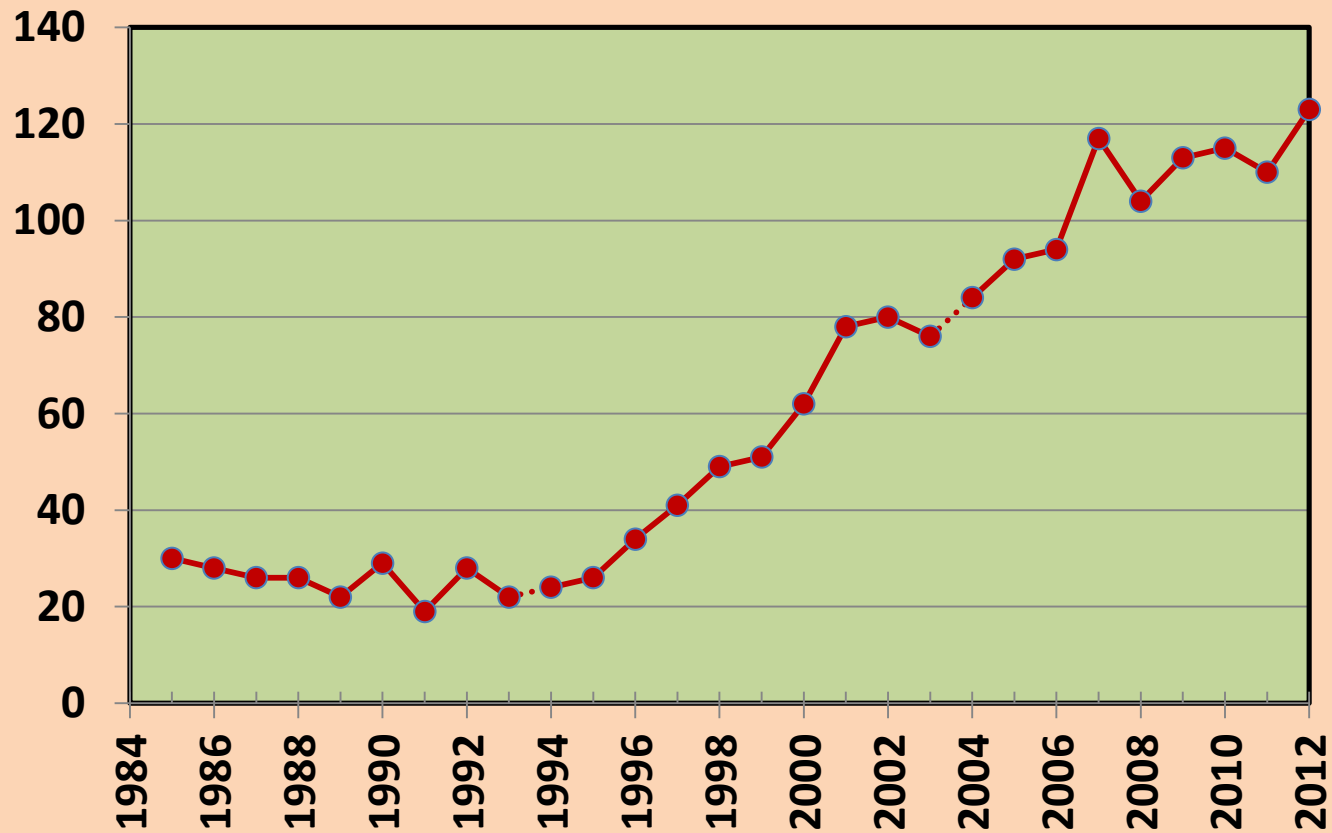


includes both live-captured panthers (n=232) and panthers discovered at death (n=220)


Minimum Number of Panthers Calculated on 31 March 2014



Ranchers Supply Annual Counts 1985 -2012



Upper end of the panther number range was also based on the Ranchers Supply, Inc. – Annual Count 2012




It's his last Lamb

Tau-Cal™
U.S.A.

Tau-Cal™
No. 41008

RANCHER'S SUPPLY, INC.
The Livestock Protection Co.
P.O. Box 725 Alpine, Texas 79831
432-837-3630 livestockprotection@gmail.com

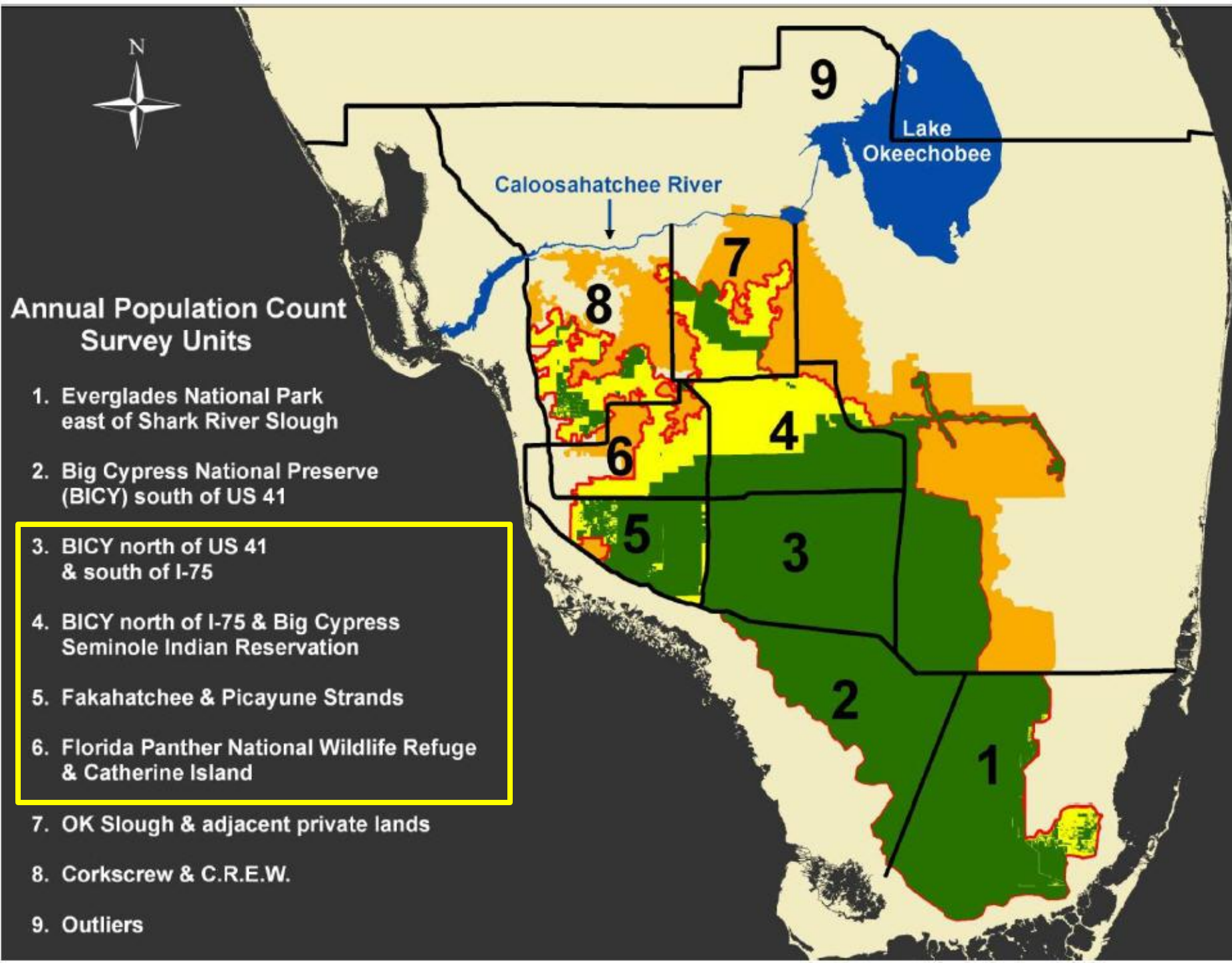
**FLORIDA PANTHER
ANNUAL COUNT
2012**



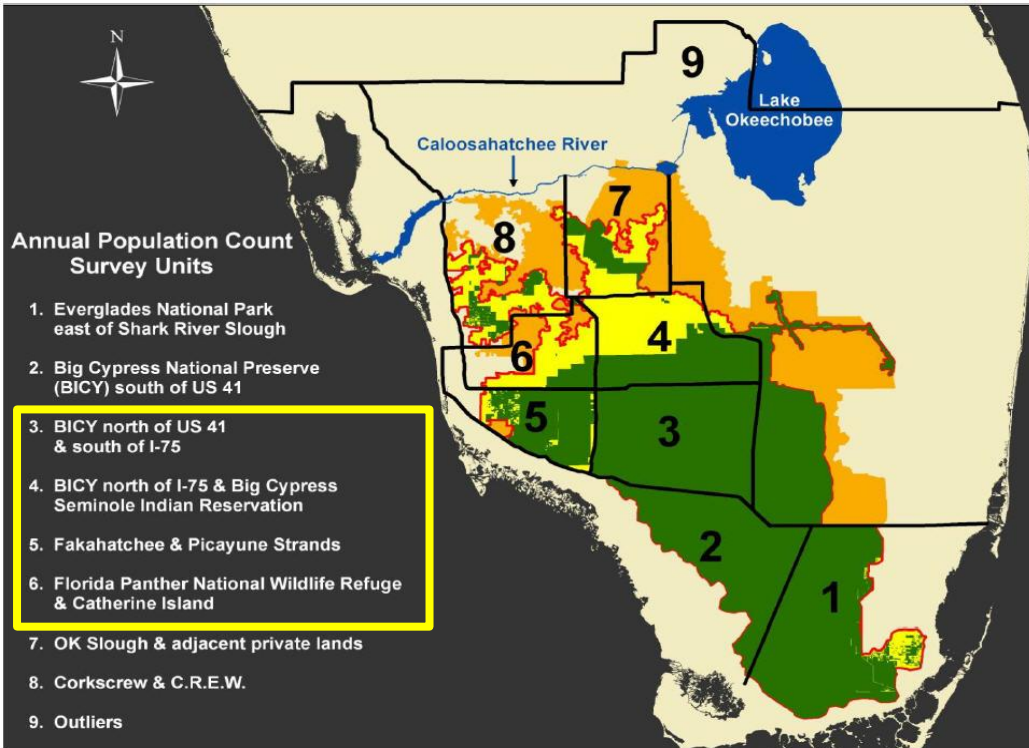


Annual Population Count Survey Units

1. Everglades National Park east of Shark River Slough
2. Big Cypress National Preserve (BICY) south of US 41
3. BICY north of US 41 & south of I-75
4. BICY north of I-75 & Big Cypress Seminole Indian Reservation
5. Fakahatchee & Picayune Strands
6. Florida Panther National Wildlife Refuge & Catherine Island
7. OK Slough & adjacent private lands
8. Corkscrew & C.R.E.W.
9. Outliers

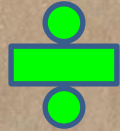


2012 Ranchers Supply Units	Adults
#3 - BCNP: N of US 41, S of I-75	21
#4 - BCNP: N of I-75 + BCSIR	19
#5 - Fakahatchee, Picayune	13
#6 - FPNWR	10
TOTAL	63

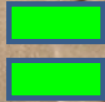


Approximate panther density within Units 3-6

63 Adult Panthers



1267.5 Square Miles



5 Adult Panthers per 100 Square Miles



Primary Zone

Primary Zone = 3547 square miles



5 Adult Panthers per 100 Square Miles



177 adult panthers

Current population size



100-180 adult panthers in Primary Zone