

Silvio O. Conte National Fish and Wildlife Refuge



2021-2022 Hunting and Fishing in Massachusetts

Division/Unit	Areas Open/Closed to Hunting	Areas Open/Closed to Fishing
Dead Branch Division	Open (98 acres)	Dead Branch
Fort River Division	Open (206 acres) Closed (84 acres)	Fort River
Hatfield Unit	Open (20 acres)	Great Pond
Honey Pot Wetlands Unit	Open (21 acres)	
Mill River Division	Open (252 acres)	Connecticut River Magnolia Pond Triangle Pond
Mt. Toby Unit	Open (29 acres)	Connecticut River
Mt. Tom Unit	Open (141 acres)	Connecticut River
Third Island Unit	Open (4 acres) Closed January 1- June 30	Connecticut River
Westfield River Division	Open (262 acres)	West Branch of Westfield River
Fannie Stebbins Unit	Closed (363 acres)	Connecticut River
Wissatinnewag Unit	Closed (21 acres)	

We allow hunting and fishing at the above divisions and units within the refuge subject to certain conditions.

Please refer to the Massachusetts Hunting Guide for clothing requirements, definition of approved weapons, bag limits, license requirements, and other important information. Contact MassWildlife at (508) 389-6300 or check their web page at: <https://www.mass.gov/hunting-regulations>.

Allowed Species

Migratory Game: Migratory bird species including ducks, geese, crows, rail, snipe, and American woodcock can be hunted during the migratory game bird hunting season. All refuge lands open to migratory bird hunting will be in accordance with the Commonwealth of Massachusetts applicable migratory bird regulations.

Upland Game: Coyote, fox, raccoon, opossum, gray squirrel, snowshoe hare, cottontail rabbit, pheasant, quail, ruffed grouse, and bobcat can be hunted according to the Commonwealth of Massachusetts regulations throughout the refuge, with the exception of no night hunting or the use of electronic calls.

Big Game: Big game (White-tailed deer, wild turkey, and black bear) can be hunted according to the Commonwealth of Massachusetts regulations throughout the refuge, with the exception of refuge specific regulations.

Fish: Recreational fishing would be conducted under the Commonwealth of Massachusetts regulations for open water and ice-fishing with some additional restrictions to protect fish, wildlife, and habitat, and to reduce potential public use conflicts. During the seasons specified in the fishing regulations established annually by the State, fishing could occur between one half-hour before legal sunrise to one half-hour after legal sunset.

Access and Permits

Access to refuge lands for hunting is from public roads and adjoining public lands and water. No refuge specific permit is required.

Reminders

- Refuge lands are closed to night hunting.
- No recorded or electronic calls can be used.
- Third Island unit is closed from January 1 through June 30 to protect nesting bald eagles.
- We prohibit launching of motorboats from the refuge.
- No baiting is allowed on refuge lands.
- We prohibit the use of reptiles and amphibians as bait for fishing.
- We allow the use of dogs when hunting waterfowl and upland game species.

For more information, contact:

Silvio O. Conte National Fish and Wildlife Refuge
103 East Plumtree Road
Sunderland, MA 01375
(413) 548-8002
https://www.fws.gov/refuge/Silvio_O_Conte/

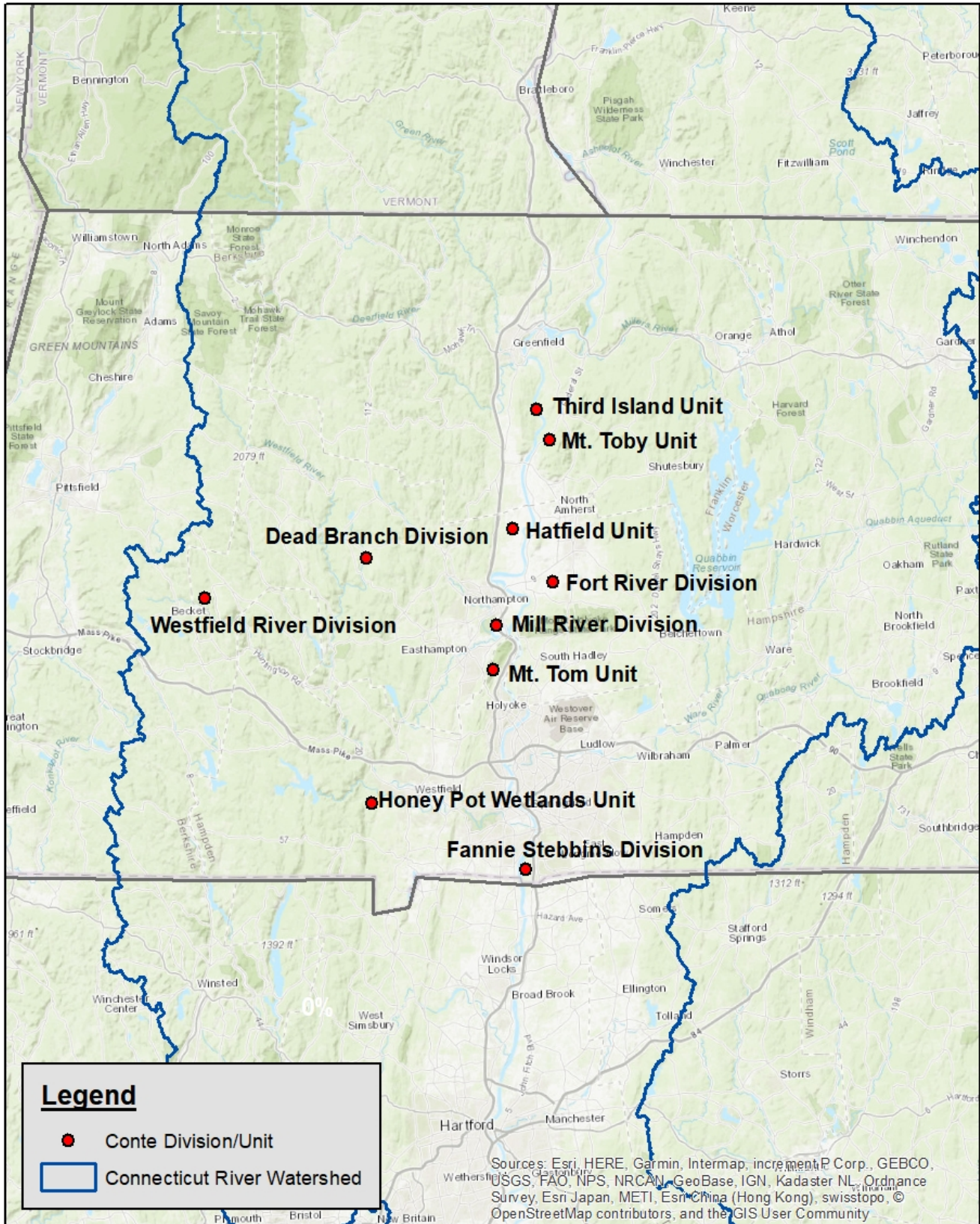
Federal Relay Service
for the deaf and hard-of-hearing
1 800/877 8339

U.S. Fish & Wildlife Service
1 800/344 WILD
<http://www.fws.gov>
March 2021





Silvio O. Conte National Fish and Wildlife Refuge



This map is designed by US Fish and Wildlife Service in 2018 for the use of Massachusetts hunting/fish plan.

