



U.S. Fish & Wildlife Service

John H. Chafee

National Wildlife Refuge

Big and Upland Game Hunting Regulations 2021–2022

Welcome

John H. Chafee National Wildlife Refuge was established in 1988 along Pettaquamscutt Cove in Southern Rhode Island. Part of the Rhode Island National Wildlife Refuge Complex, this 563-acre refuge was established for the protection of black ducks, shorebirds, and other waterfowl. A popular destination for wildlife dependent recreation, the refuge is open to big game hunting in designated areas.

John H. Chafee National Wildlife Refuge

50 Bend Road, Charlestown, RI 02813

401-364-9124

email: rhodeislandcomplex@fws.gov

https://www.fws.gov/refuge/John_H_Chafee

For State relay service TDD/800-735-2258 Voice

U.S. Fish & Wildlife Service

1-800-344-WILD

August 2021

Hunt Brochure Big Game Hunting 2021-2022

I have read and agree to comply with the refuge rules and regulations described in this hunt brochure. Valid for current season only.

Signature _____

Date _____

You must carry this signed and dated brochure with you at all times while hunting on the refuge.

Valid hunting dates:
09/15/2021 – 01/31/2022

This is a unit of the National Wildlife Refuge System, a network of lands and waters managed for the benefit of wildlife and people.



Hunters are required to possess a valid Rhode Island hunting license, all required stamps, an original valid government-issued photo identification (no copies or photos), **State archery proficiency certification**, and a valid, signed hunting brochure on their person at all times during refuge hunting days. Archery only hunting for white-tailed deer, wild turkey (fall only), coyote, and fox is allowed in designated locations (see map), during the State hunting seasons. Permitted hunters may take coyote and fox during the deer hunting season only. Spring turkey season is closed.

Weapons

No firearms hunting allowed. Persons possessing, transporting, or carrying archery equipment on National Wildlife Refuge System lands must comply with all provisions of State and local law. Persons may only use (discharge) bow and arrows/crossbows in accordance with refuge regulations in 50 CFR § 32.58.

Vehicles

All-terrain vehicles (ATVs and UTVs), dirt bikes, or other non-licensed vehicles are prohibited on refuge lands.

Hunting Regulations

Hunting is permitted in accordance with Federal regulations governing public use on National Wildlife Refuges as set forth in Title 50 of the Code of Federal Regulations. Hunting will be in accordance with applicable State of Rhode Island regulations subject to the conditions stated below.

Access

White-tailed deer, wild turkey (fall only), coyote, and fox hunting dates and times are posted in the Rhode Island Hunting and Trapping Abstract. Hunting is permitted in designated areas of the refuge as depicted on the hunting map. No hunting allowed within safety zones, no weapon discharge into, from, or within safety zones. Hunters may pass through a hunt safety zone with unloaded weapons. Some, but not all safety zones are marked in the field. Only participants who possess a valid, signed hunt brochure will be allowed to enter the hunt units. Hunters may scout the hunt units one week prior to the hunt season with a valid, signed hunt brochure. Night hunting is prohibited.

Tree Stands and Hunting Blinds

We only allow portable tree stands and blinds. You must clearly label any tree stand or blind left on the refuge overnight with your Rhode Island hunting license number. Stands and blinds may be placed beginning September 8, 2021 and must be removed by February 15, 2022. The use of nails, wire, screws or bolts to attach a stand to a tree or hunting from a tree into which a metal object has been driven to support a hunter is prohibited on refuge lands (50 CFR 32.2(i)).

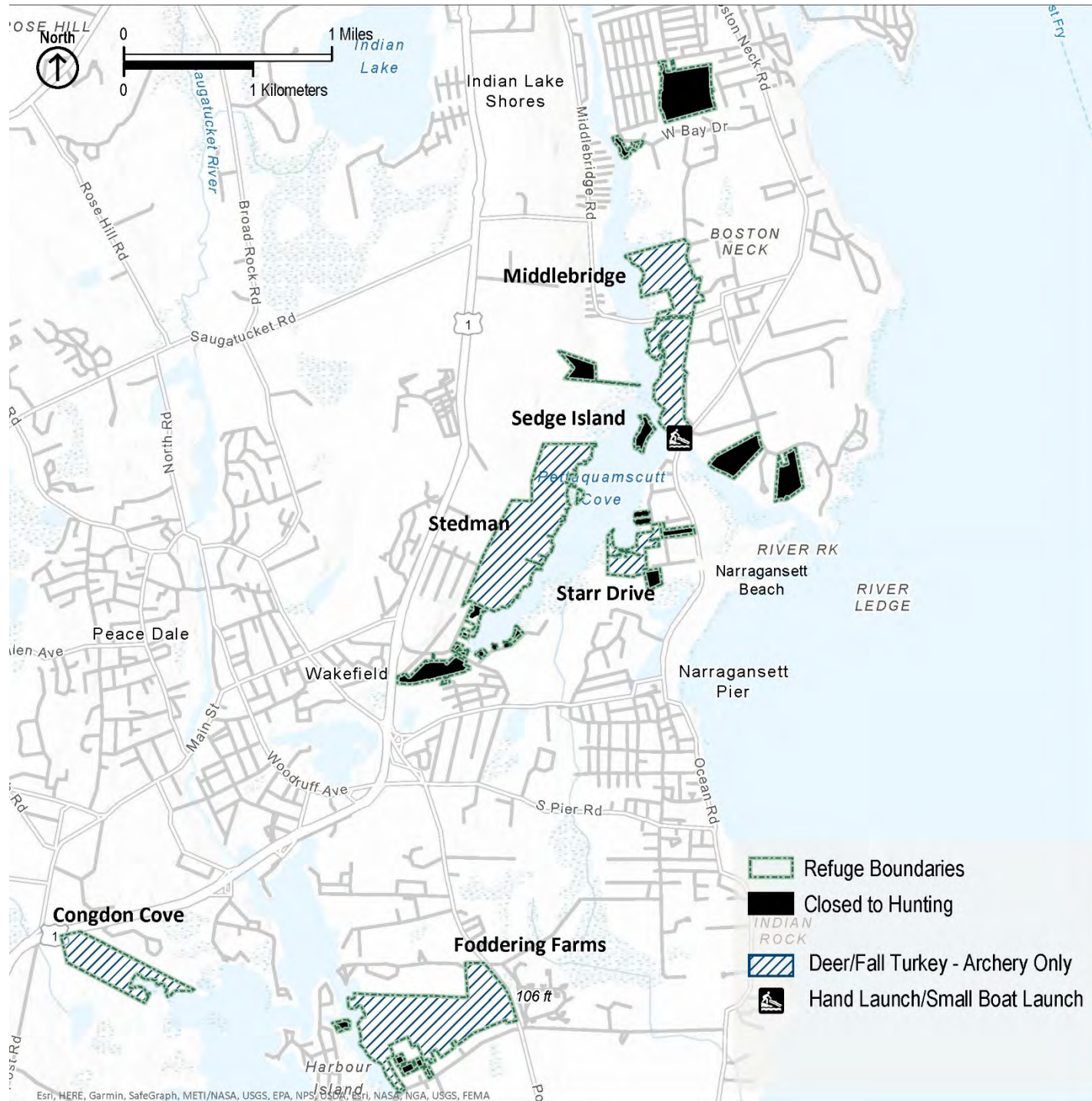
Game/trail Cameras

All game/trail cameras must be clearly labeled on the exterior of the housing with the hunter's State hunting license number. When deploying cameras, mounting hardware must not cause damage to vegetation. Cameras must be removed by February 15, 2022.

Harvest Reporting

In addition to following State harvest reporting requirements, hunters must complete a Big Game Harvest Report (FWS form 3-2359) and return it to the refuge by March 15, 2022.

JOHN H. CHAFEE NATIONAL WILDLIFE REFUGE



Reminders and Prohibited Activities

- Detailed maps, closures or updates will be posted at www.fws.gov/refuge/john_h_chafee/
- We prohibit the possession of alcoholic beverages while hunting.
- We prohibit camping and fires.
- No taking wildlife other than deer, turkey, coyote, and fox during appropriate season (50 CFR 27.51).
- We prohibit marking (including, but not limited to, the use of flagging, bright eyes, tacks, and paint), cutting and/or removal of trees or vegetation (50 CFR 27.61).
- The placement of or hunting over bait is prohibited.
- Discharge of archery equipment within 200 feet of any dwelling is prohibited.
- Guiding, outfitting, advertising, and/or audio or visual productions for commercial purposes are prohibited.
- Shooting from, across, or down any public road is prohibited.
- No field dressing animals in parking areas.
- No hunt parking allowed on Crest Avenue in South Kingstown.

Signs and Boundaries

- No vehicles: All Traffic Prohibited
- Refuge Boundary: entry to area is permitted in accordance with refuge regulations
- Hunt Safety Zone: no discharge of weapons into, from, or within zone
- Closed Area: All entry is prohibited
- No Hunting Zone: Hunting, weapons, and game retrieval prohibited