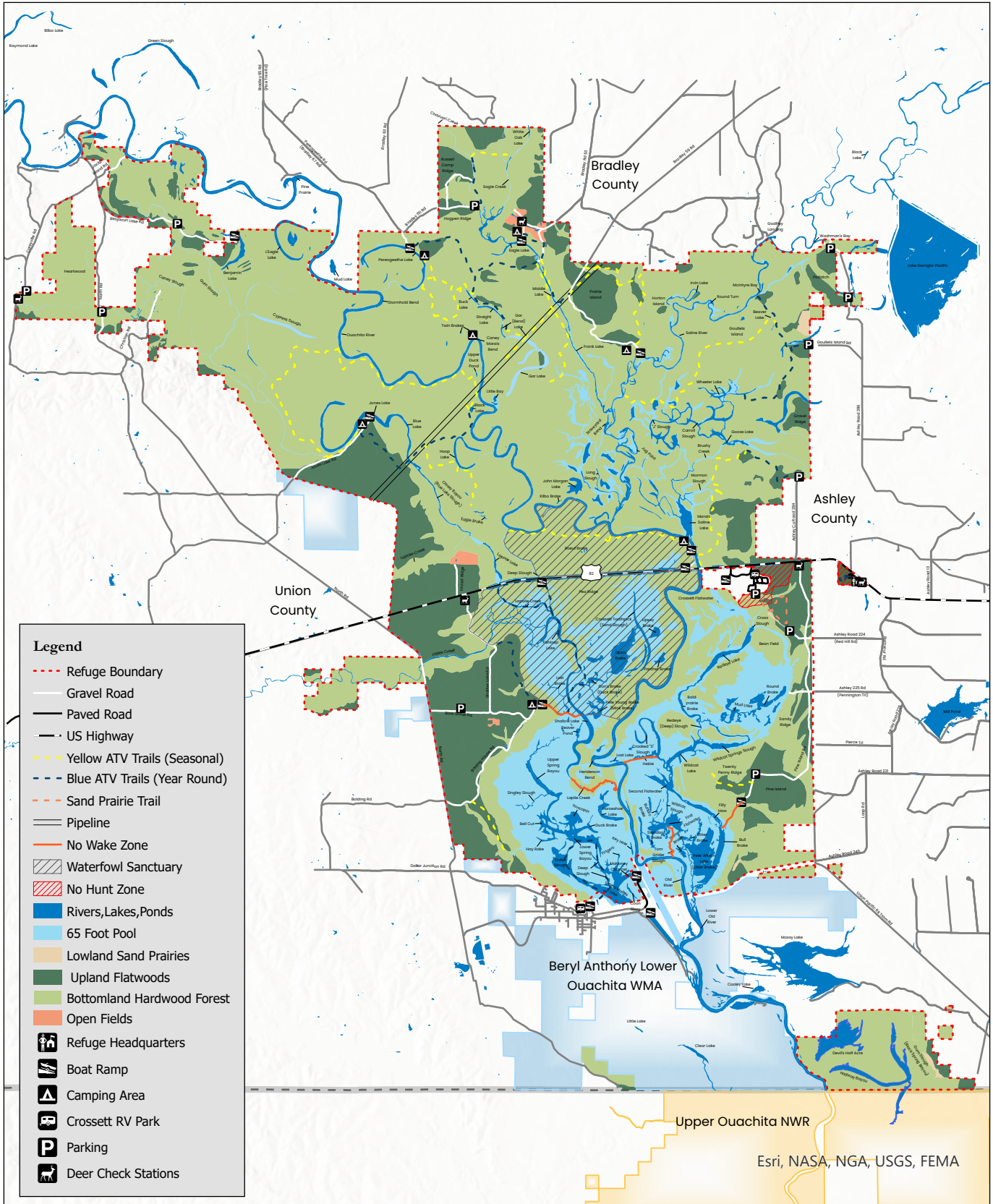
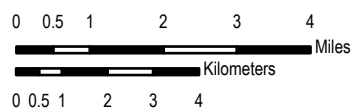




# Felsenthal National Wildlife Refuge



Produced by South Arkansas Refuge Complex  
 Crossett, AR  
 Map Date: 5/13/2024  
 File Name: FSLGeoRefMap\_2021.aprx



The USFWS makes no warranty for use of this map and cannot be held liable for actions or decisions based on map content.

This georeferenced map is for public use which displays the current boundaries, access, habitat types, and points of interest for the Felsenthal National Wildlife Refuge.

Map image is the intellectual property of Esri and is used herein under license. Copyright © 2019 Esri and its licensors. All rights reserved.

