

# Modoc National Wildlife Refuge

## Grandma Tract Hunting Regulations

**Species** - Hunting of geese, ducks, coots and snipe is permitted in the designated hunt areas of the Refuge. Hunters are required to adhere to the bag and possession limits and any other regulations for the Northeastern California Zone set by the State each year. Hunting of any other species is prohibited.

### Opening Weekend:

**Permits & Hunt Days** - Through a lottery drawing of submitted applications, a permit is issued by the Refuge to hunters for the first Saturday and Sunday of the waterfowl hunting season. *For information on opening weekend and lottery please see Refuge website for more details.* <http://www.fws.gov/refuge/modoc/>

### After Opening Weekend:

**Permits** - Hunters must check-in and check-out of the Refuge by use of self-service permits located in the designated hunt parking areas. *Hunters must have their permit, hunting license, State duck /Federal migratory bird stamps, HIP Validation and photo ID in their possession at all times while hunting on the Refuge.*

**Hunt Days** - Hunting is permitted only on Tuesdays, Thursdays, and Saturdays. The length of the season is set by the State each year.

### Regulations for All Hunters All Year:

**Access and Hours** - Hunters must enter and exit the hunting area from the designated parking area. All other access is prohibited, including dropping off of passengers or equipment outside of the designated hunt parking area. Hunting areas are opened 90 minutes before shooting time and closed 60 minutes after sunset each hunt day.

**Authorized Conveyances** - Access to the hunt area is by foot and non-motorized cart traffic only through the designated parking area. Any other form of conveyance is prohibited in the hunt area. There are many graveled levees for hunters to use.

**SPECIAL NOTE: If hunting in Unit 8 or 10 please refrain from shooting south toward County Road 56.**

**Assigned Hunt Units** – There are 5 assigned hunt units (2 wetland, 1 dry grain field, and 2 units which may be either freshly planted grain, flooded standing grain, dry grain, or moist soil wetland) available on the Grandma Tract hunt area. The Units open to hunting are #2, #4, #6, #8, #10. Hunters utilizing the assigned hunt units must park in the numbered space corresponding to the unit they wish to hunt. Assigned hunt units are available on a first-come, first-served basis after opening weekend. No more than one party may occupy an assigned hunt unit, but may hunt from anywhere within the assigned unit boundaries. A hunting party is limited to four persons (this includes junior hunters). Hunters must remain within the assigned hunt unit except to retrieve downed birds and going to or from their vehicle. No firearms are allowed into the marked retrieval zones. Do not enter beyond “Closed Area” signs.

**Junior Hunters** - Hunters 17 years and under must be accompanied by an adult and possess a valid junior hunting license and a Refuge permit when in the Refuge hunt area. Special junior waterfowl hunt days are often held before the opening of the waterfowl season or during the regular season. Call the Refuge for further information.

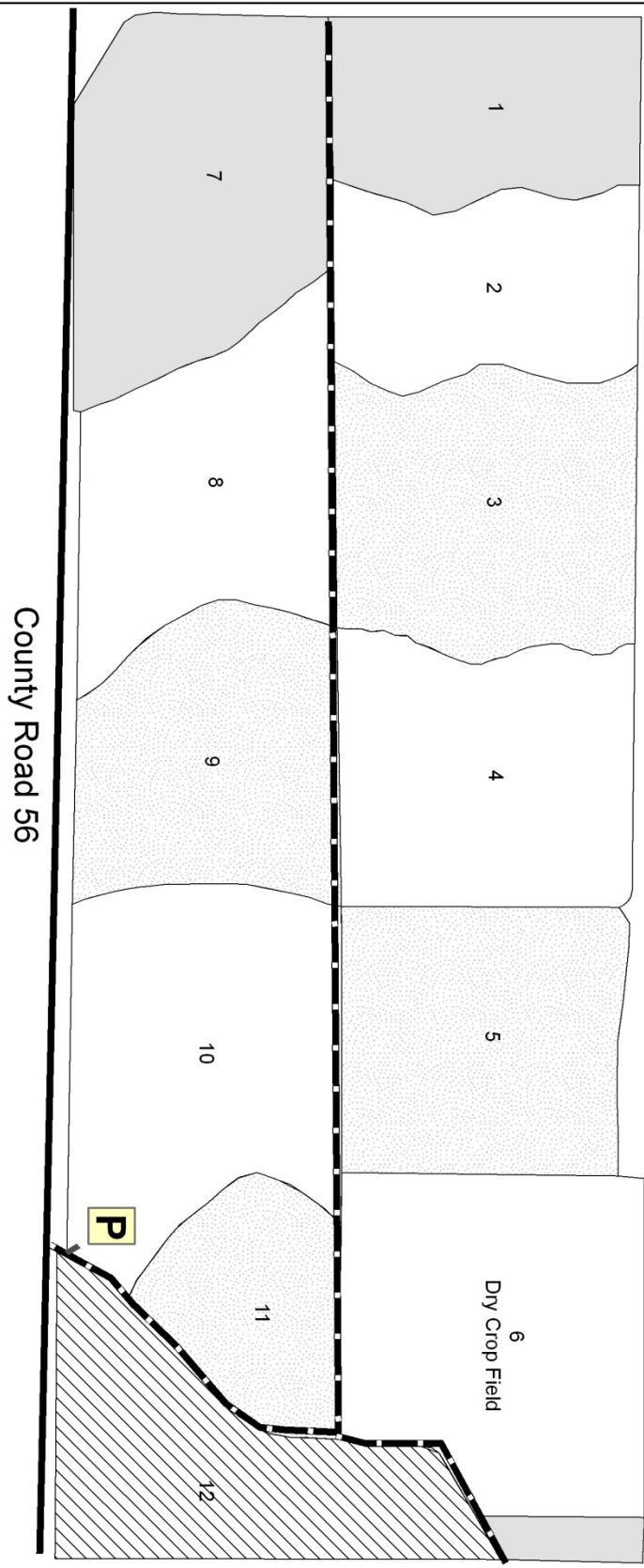
**Ammunition and Shell Limit** - Hunters may possess only approved, nontoxic shot while in the Refuge hunt area. Hunters may not possess more than 25 shells after leaving the designated parking area.

**Prohibited Acts** - No fires, camping or alcoholic beverages are allowed. No overnight parking or camping on roadway from County Road 56 to entrance gate is allowed. Hunters may begin to line up at the entrance gate no earlier than 3:00 AM on Refuge hunt days.






**Personal Property** - All decoys, trash (including spent shot shells) and other personal property must be removed from the Refuge at the close of each hunt day through the designated hunt parking area. Guns must be unloaded in parking area at all times.

**Safety** - The Refuge hunt area contains a variety of habitats including rough, uneven terrain, deep waters, dense stands of tules, wet meadows and ditches. Rainfall and snow can make roads and fields muddy and slippery, making them more difficult to negotiate. Hunting difficulty varies by area and hunters should examine their own abilities and limitations before using the Refuge. Persons with disabilities should hunt with a partner and consult with the Refuge manager for suggestions on hunting the area safely. Injuries or accidents occurring on the Refuge must be reported immediately to Refuge headquarters.

# Grandma Tract Hunt Units



Modoc National Wildlife Refuge  
 Created by Sean Cross  
 7/27/2011

-  CLOSED
-  NO HUNTING
-  OPEN AREA
-  RETRIEVAL ZONE
-  ACCESS TRAIL