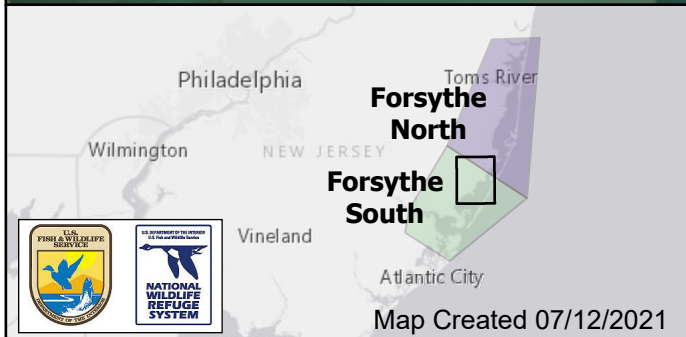
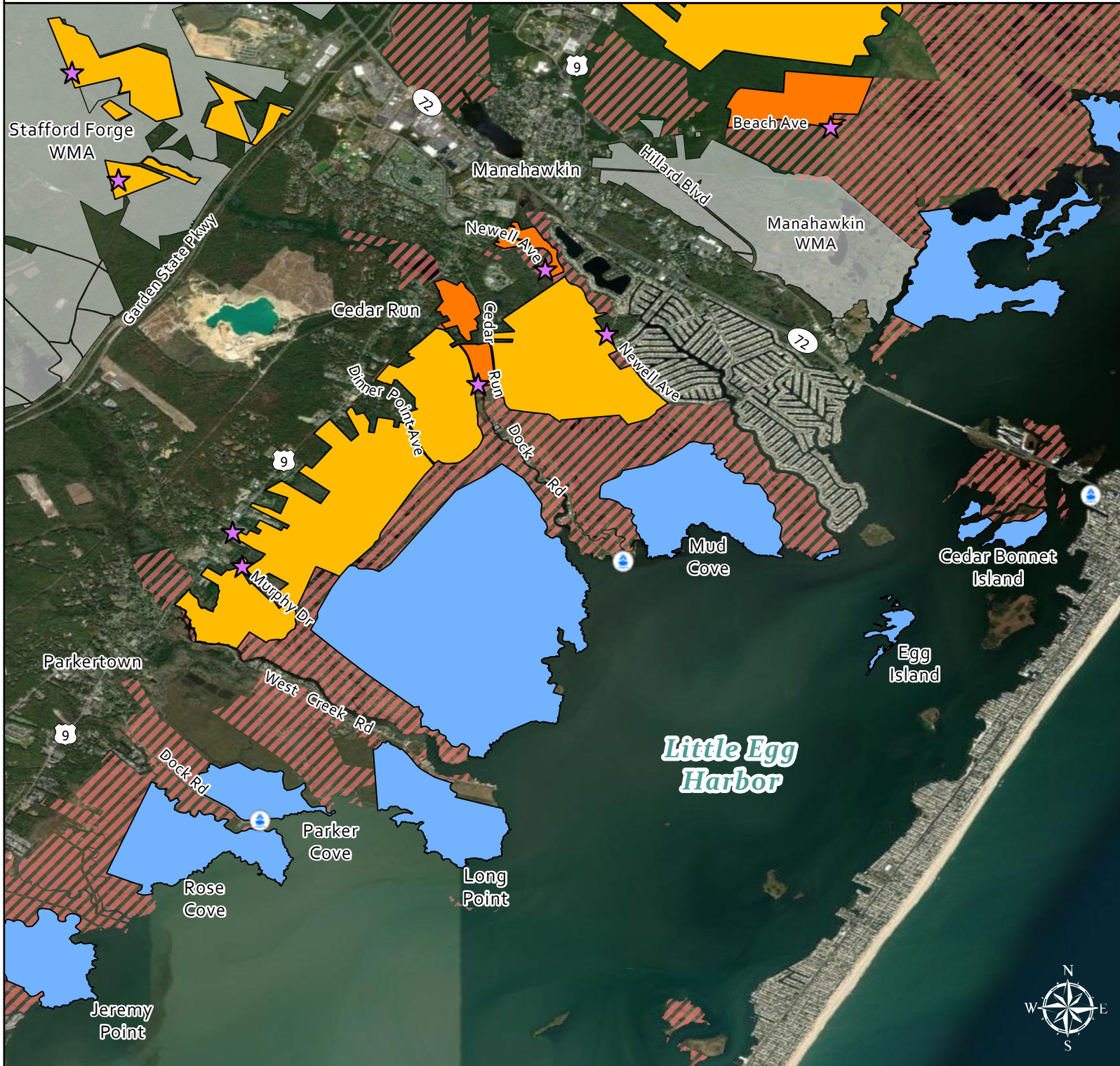


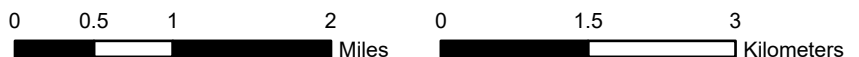
**Edwin B. Forsythe National Wildlife Refuge
Forsythe South: Stafford & Eagleswood Townships**



Legend

- Deer & Upland Game Hunt Area (All Weapons)
- Migratory Bird Hunt Area
- NJ WMA
- Deer & Upland Game Hunt Area (Archery Only)
- Refuge Lands Closed to Hunting
- Hunter Parking
- Boat Launch (Fee May Apply)

All Refuge owned lands located north of Route 72 on this map are within DMZ 51.
Lands located south of Route 72 and east of the Garden State Parkway are within DMZ 22.
Lands located south of Route 72 and west of the Garden State Parkway are within DMZ 24.



Edwin B. Forsythe

National Wildlife Refuge

Refuge Hunting Information for Visitors

Thank you for participating in the Edwin B. Forsythe National Wildlife Refuge hunt program, one of the National Wildlife Refuge System's priority public uses. To ensure your safety and enjoyment, please read the following information and abide by refuge rules and regulations.

Hunting is permitted in accordance with all applicable state and federal regulations. Hunters should also consult the New Jersey Hunting and Trapping Digest. In addition, specific refuge regulations (RR) are included here.

Seasons

We allow deer, squirrel, spring turkey, and migratory bird hunting on the refuge according to dates set by NJ Fish and Wildlife. State regulations for each season apply, except where noted by (RR).

Refuge Permit

To hunt on the refuge you must purchase an Annual Refuge Hunting Permit on-line (RR). The cost is \$25 for adults, with reduced rates for seniors, active military, veterans and Gold Star family members. Permits are free for youth 16 and under. One permit allows you to hunt all seasons on refuge lands, including lottery hunts. The permit year begins on March 1. Go to <https://forsythe.recaccess.com> to purchase.

Refuge Hunt Areas

About 9,500 acres are open to deer, squirrel and turkey hunting. We provide 1,130 acres of archery-only hunting. Nearly 19,000 acres are open for migratory bird hunting. **Not all refuge lands are open to hunting.**

Access

Hunters may enter the refuge no earlier than two hours before shooting time and leave no later than one hour after the end of shooting time. See hunt maps for boat launching and parking recommendations.

Hunters may scout the two Sundays before the start of each season and all subsequent Sundays during each season.

Bag Limits and Checking Harvest

See the NJ Hunting and Trapping Digest for the area you are hunting.

Deer Hunting

All refuge deer hunts are managed through an on-line lottery system. To hunt on the refuge, you will enter the lottery for each hunt you are interested in. The refuge is divided into two Areas: Forsythe North (which overlaps DMZ 51) and Forsythe South (which overlaps DMZs 22, 24, 26 & 42).

Lottery entry begins July 16, 2024 at <https://forsythe.recaccess.com>. All lottery entries must be made by midnight August 8, 2024. Emailed result notifications will occur by August 13, 2024. The cost for each lottery entry is \$2 (with a maximum charge of \$8). If selected, all lottery permits are free, but you must obtain an Annual Refuge Hunting Permit on-line to accept the winning permits. See our website for information about unclaimed permits.

The 3-day shotgun hunt only occurs in early December and only in Galloway Township in the Refuge Headquarters area.

Turkey Hunting

To hunt turkey on the refuge, you must receive a NJ turkey permit for Turkey Management Areas 14 or 16, which overlap refuge lands. To gain access to hunt on the refuge, you must obtain an Annual Refuge Hunting Permit on-line.

Squirrel Hunting

Squirrel hunting is permitted on all lands open for deer hunting, except for the lands in Forsythe South that are open for the 3-day Shotgun Hunt. To gain access to hunt on the refuge, you must obtain an Annual Refuge Hunting Permit on-line.

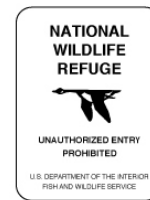
Migratory Bird Hunting

Waterfowl (ducks and geese), rail, and gallinule hunting is permitted on the refuge. To gain access to hunt on the refuge, you must obtain an Annual Refuge Hunting Permit on-line. No refuge permit is required if you do not access refuge land/marsh for hunting or game retrieval. A Goose hunt area is available in years a conservation order is implemented on the refuge. A 6-decoy minimum is required and jump shooting is not permitted (RR).

Refuge Regulations (RR) In Addition to State Regulations,

It is the hunter's responsibility to know if they are on refuge property. Not all boundary lines are signed completely. Do not trespass on private property. Do not block roadways or gates.

Refuge boundary and hunting area signs:



You may leave your stand up through the last day of deer hunting season and it must be identified with your state Conservation Identification Number (RR). No hunting from permanent stands is permitted.

No Sunday hunting is permitted (RR).

Remove marking tape and reflective pins at the end of each day—these are considered litter. No painting is permitted.

No vegetation trimming or cutting is permitted.

No baiting is permitted for any season (RR).

The refuge provides blinds and stands for youth and mobility impaired hunters. Contact us for more information.

If you wound a deer and it enters a refuge non-hunt area, mark the location and contact a refuge officer at (609) 226-1075.

For any questions, call (609) 652-1665, email forsythe@fws.gov or visit the refuge website at www.fws.gov/refuge/edwin_b_forsythe/.

(RR) = refuge regulation

Updated May 2024

