



# Federal Subsistence Board News Release



U.S. Fish and Wildlife Service  
Bureau of Land Management  
National Park Service  
Bureau of Indian Affairs

Forest Service

**For Immediate Release:**  
June 26, 2024

**Contact:** Spencer Rearden  
(907) 543-3151  
Spencer\_Rearden@fws.gov

## Kuskokwim River Mainstem Fishing Opportunities

Pursuant to authority delegated by the Federal Subsistence Board, the Yukon Delta National Wildlife Refuge Manager, as In-Season Manager, hereby announces two additional fishing opportunities for **Federally qualified subsistence users only**:

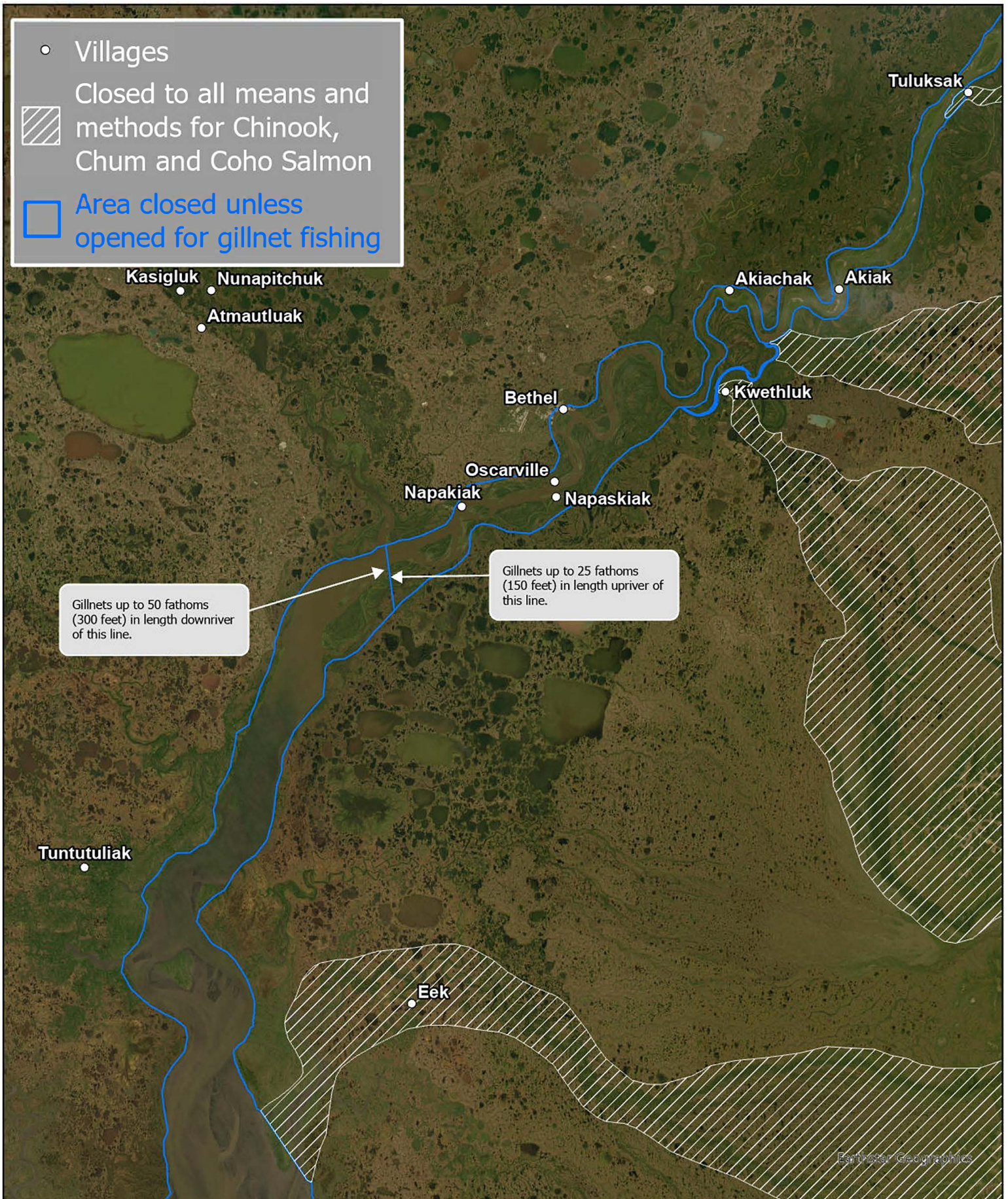
- (1) Lower Kuskokwim Set Net Fishing Opportunities: In the Kuskokwim River main stem, downstream of the Kalskag Bluffs and Uknavik Slough (Kalskag Line) to the mouth of the Kuskokwim River at the Refuge Boundary (see maps), **set gillnets** will be allowed effective:
  - **July 1, 2024 from 12:00 (noon) pm to July 2, 2024 12:00 (noon) pm (24 hours)**
  - **July 6, 2024 from 12:00 (noon) pm to July 8, 2024 12:00 (noon) pm (48 hours)**
- (2) **Set gillnets** are restricted to 6-inch or less mesh, may not exceed 45 meshes in depth, and 75 feet in length. All species of salmon may be retained during this opportunity. The salmon bearing tributaries and the Aniak Box listed in FSA-YD-24- 01 will remain closed to all gillnets. When these harvest opportunities expire, Federal public waters of the Kuskokwim River, downstream of the Kalskag Bluffs and Uknavik Slough (Kalskag Line) to the mouth of the Kuskokwim River at the Refuge Boundary (see maps), will return to closed to the use of gillnets by all users for the protection of Chinook, Chum and Coho Salmon.

Information about the Federal Subsistence Management Program may be found on the web at [www.doi.gov/subsistence](http://www.doi.gov/subsistence) or by visiting [www.facebook.com/subsistencealaska](https://www.facebook.com/subsistencealaska).

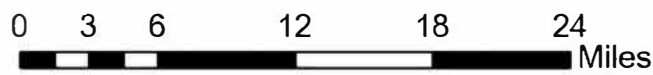
**Missing out on the latest Federal subsistence issues?** If you'd like to receive emails and notifications on the Federal Subsistence Management Program you may subscribe for regular updates by emailing [fws-fsb-subsistence-request@lists.fws.gov](mailto:fws-fsb-subsistence-request@lists.fws.gov).

-###-

# Lower River Gillnet Fishing and Closure Area

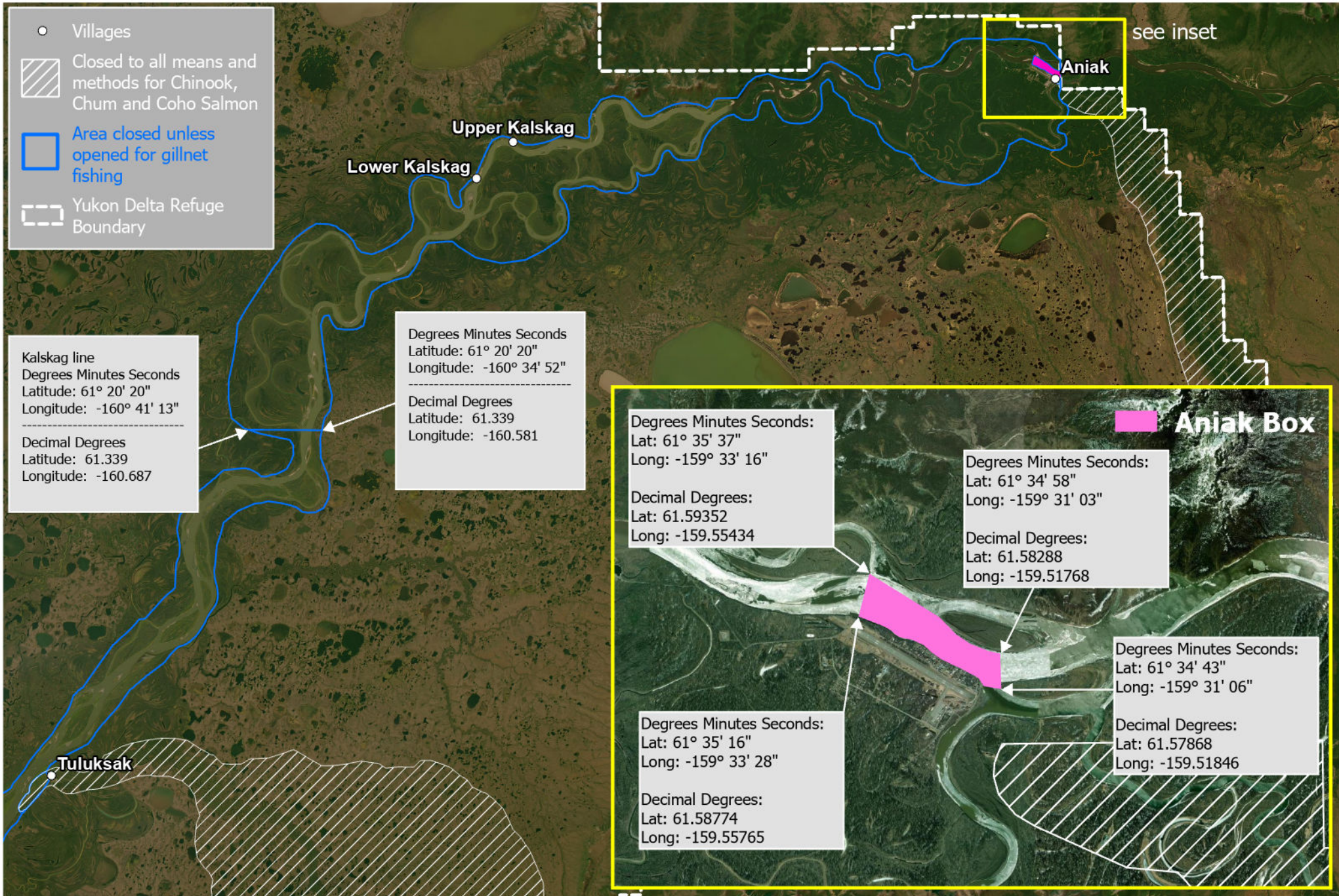


While the U.S. Fish & Wildlife Service makes every effort to represent the data shown on these maps as completely and accurately as possible, the USFWS gives no warranty, expressed or implied, as to the accuracy, reliability, or completeness of these data. In addition, the USFWS shall not be held liable for improper or incorrect use of the data described and/or contained herein. Graphical representations provided by the use of this data do not represent any legal description of the data herein and are provided only as a general representation of the data. Descriptions presented in special actions supersede any depictions provided in this map.



Earthstar Geographics

# Middle River Gillnet Fishing and Closure Area



While the U.S. Fish & Wildlife Service makes every effort to represent the data shown on these maps as completely and accurately as possible, the USFWS gives no warranty, expressed or implied, as to the accuracy, reliability, or completeness of these data. In addition, the USFWS shall not be held liable for improper or incorrect use of the data described and/or contained herein. Graphical representations provided by the use of this data do not represent any legal description of the data herein and are provided only as a general representation of the data. Descriptions presented in special actions supersede any depictions provided in this map.

