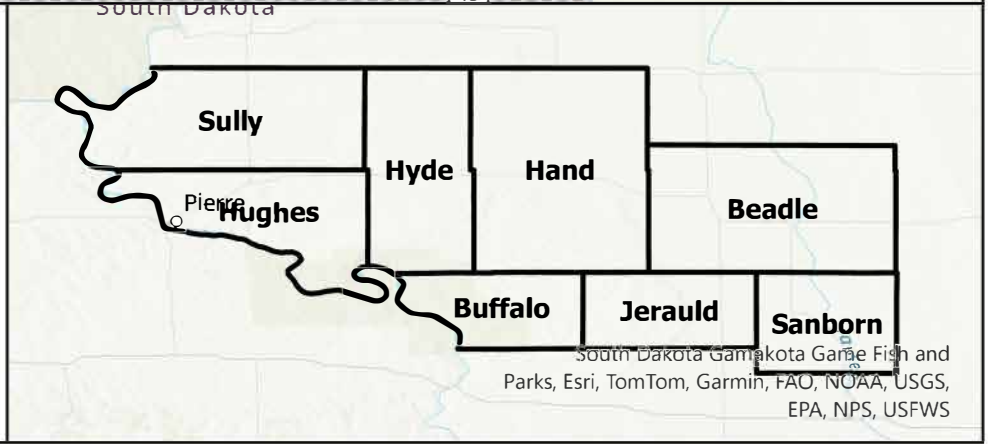
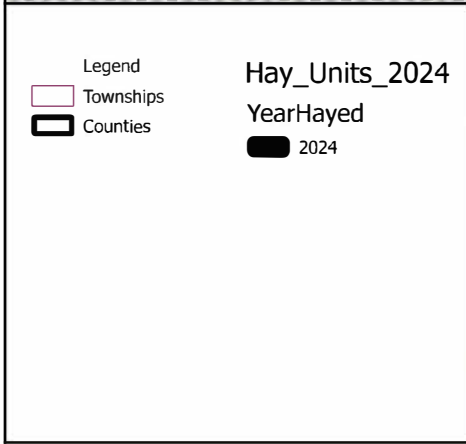
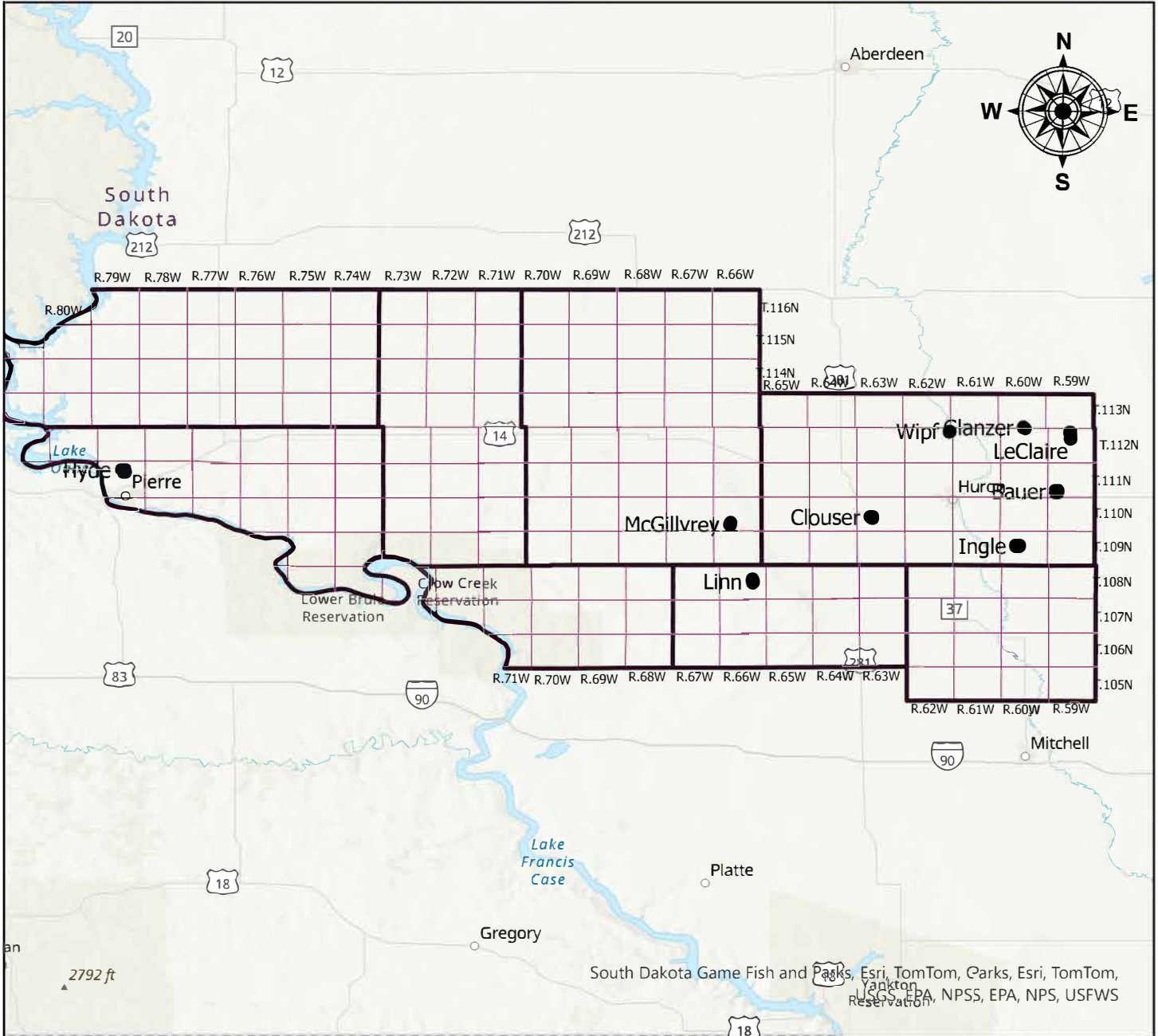




# U.S. Fish and Wildlife Service Huron Wetland Management District Waterfowl Production Areas 2024 Haying



## Haying 2024 Units

County	Waterfowl Production Area	Legal	Acres
Beadle	Bauer	T. 111 N., R. 59 W., Section 29	90.6
Beadle	Clouser	T. 110 N., R. 63 W., Section 20	42.3
Beadle	Glanzer	T. 113 N., R. 60 W., Section 34	13.1
Hughes	Hyde	T. 111 N., R. 79 W., Section 09	47.6
Beadle	Ingle	T. 109 N., R. 60 W., Section 16 & 21	78.3
Beadle	LeClaire	T. 112 N., R. 59 W., Section 04 & 09	89.2
Jerauld	Linn	T. 108 N., R. 66 W., Section 14	36.9
McGillvrey	Hand	T. 110 N., R. 66 W., Section 28	14.2
Beadle	Wipf	T.112 N., R. 62 W., Section 01	16.9

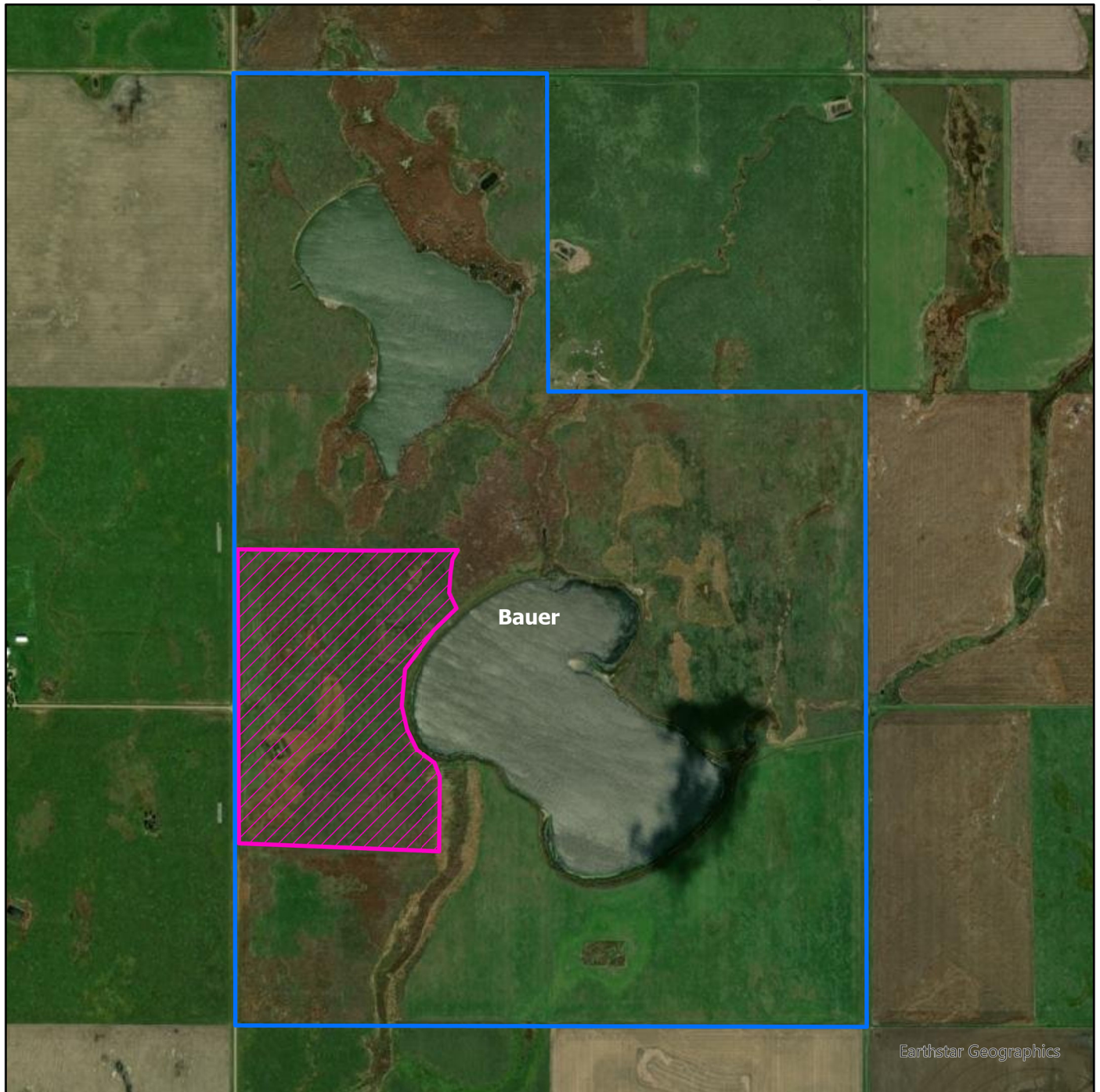


# Huron Wetland Management District

## Bauer WPA

Legal Description 111-59-29&32

County Beadle



### Legend

Estimated Acres: 90.6

Hay Area

 2024



Hayed areas must be raked and all gates need to be closed after hay and equipment have been removed.

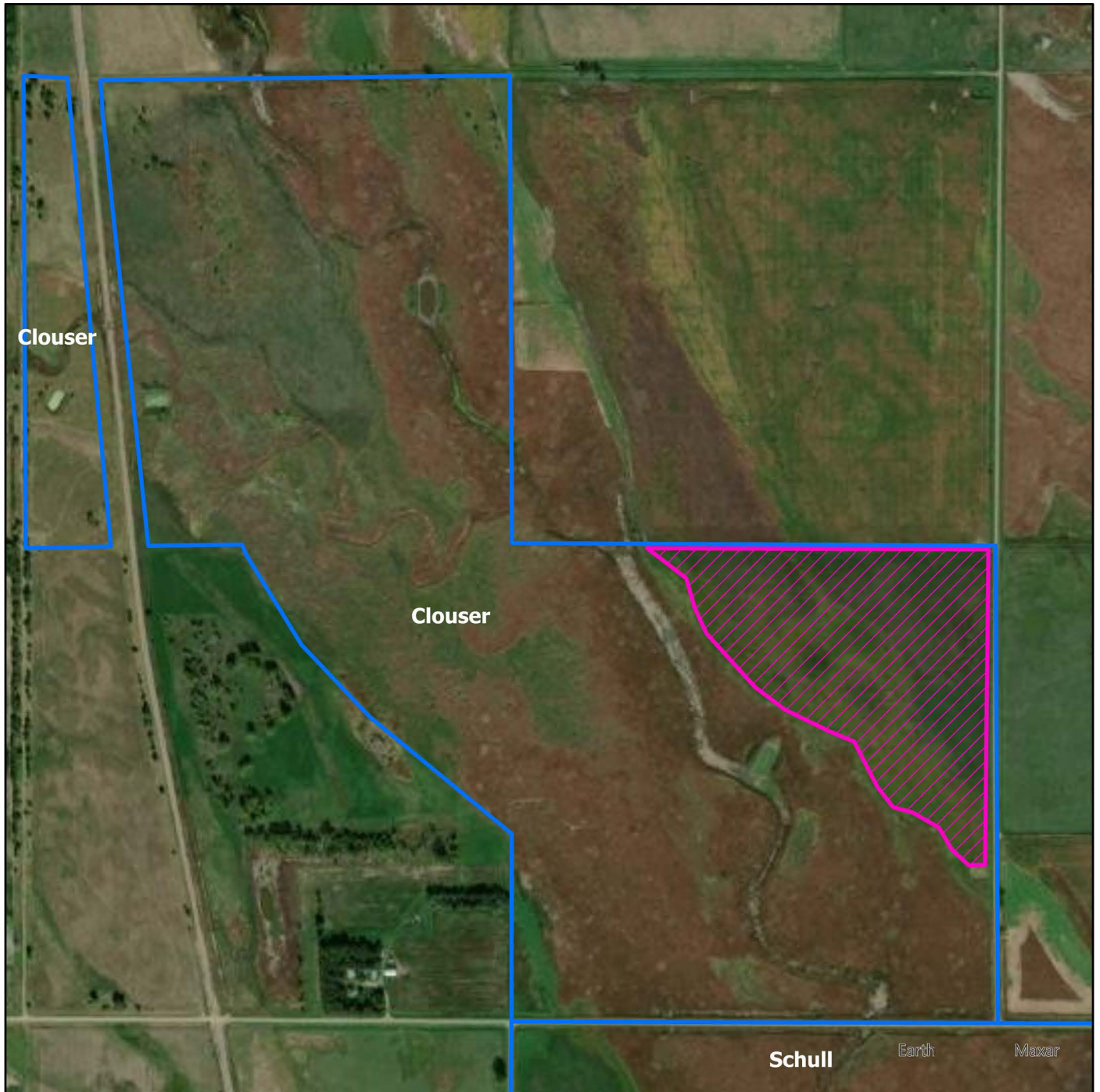


# Huron Wetland Management District

## Clouser WPA

Legal Description **110-63-20**

County **Beadle**



### Legend

Estimated Acres: 42.3

Hay Area



Hayed areas must be raked and all gates need to be closed after hay and equipment have been removed.

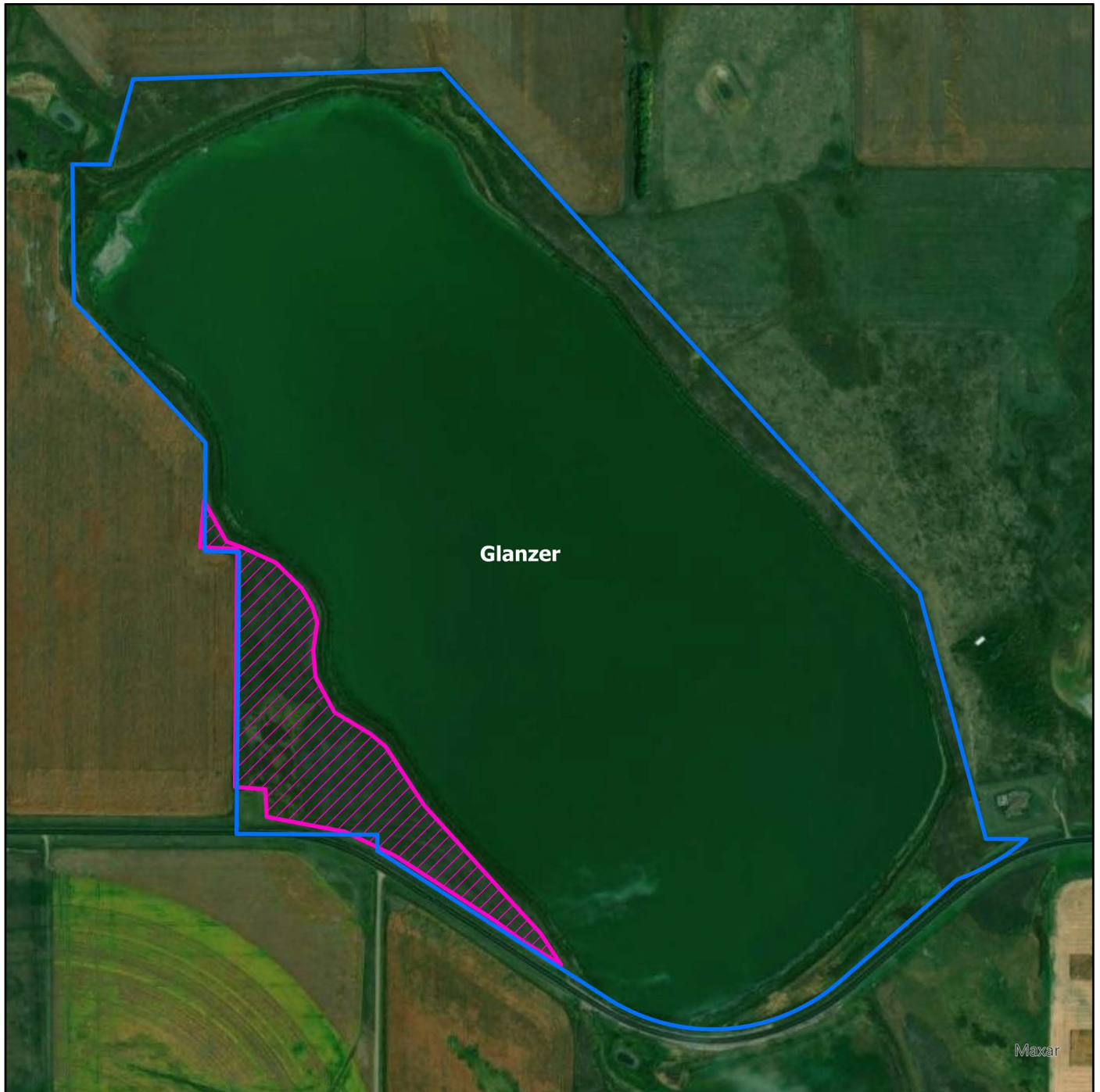


Huron Wetland Management District

# Glanzer WPA

Legal Description **113-60-34**

County **Beadle**



## Legend

Hay Area



Estimated Acres: **13.1 plus any other accessible areas**



Hayed areas must be raked and all gates need to be closed after hay and equipment have been removed.



# Huron Wetland Management District

## Hyde WPA

Legal Description **111-79-09**

County Hughes



### Legend

Estimated Acres: 47.6

Hay Area

 2024



Hayed areas must be raked and all gates need to be closed after hay and equipment have been removed.

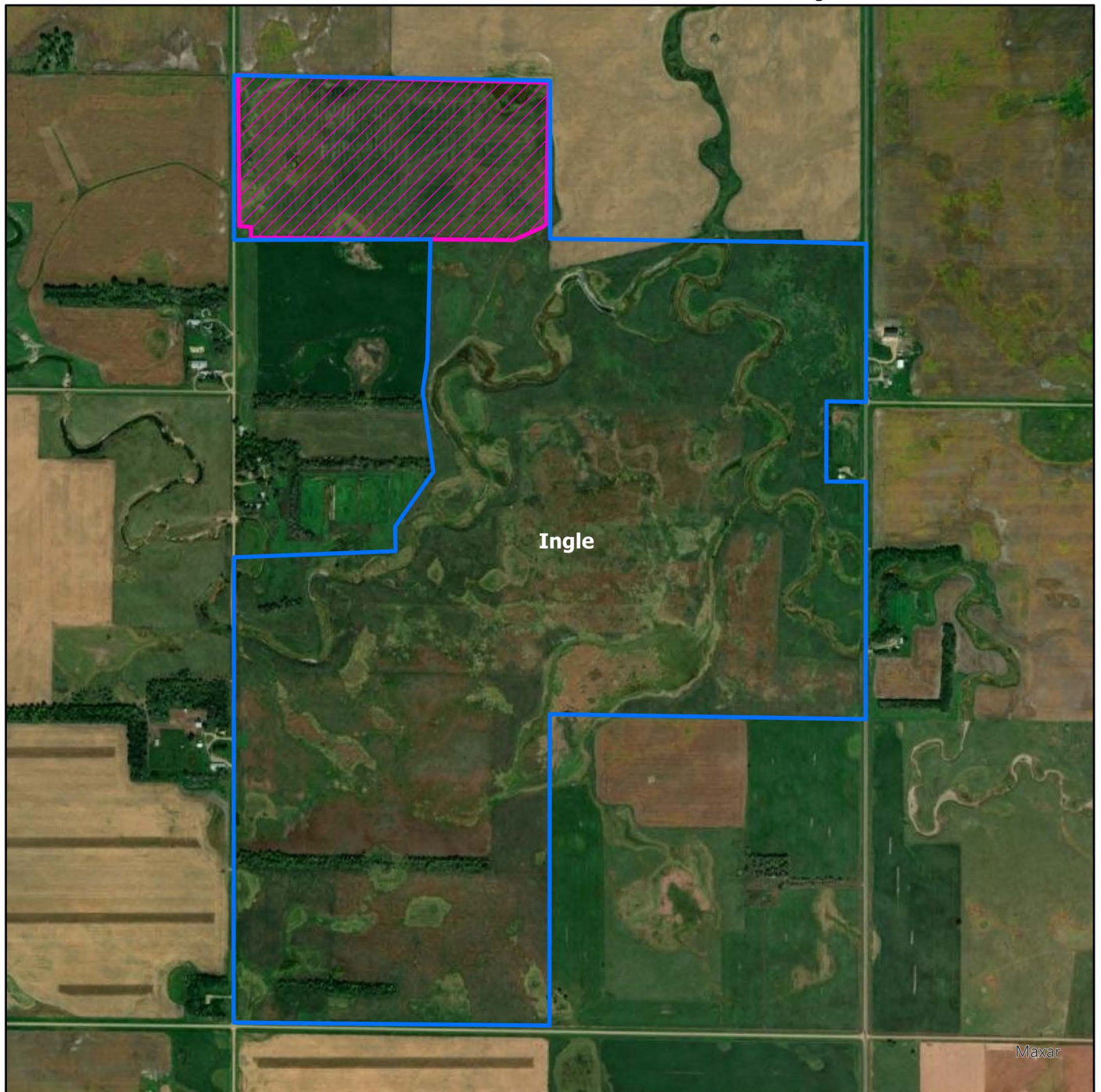


# Huron Wetland Management District

## Ingle WPA

Legal Description 109-60-16&21

County Beadle



### Legend

Estimated Acres: 78.3

Hay Area

 2024



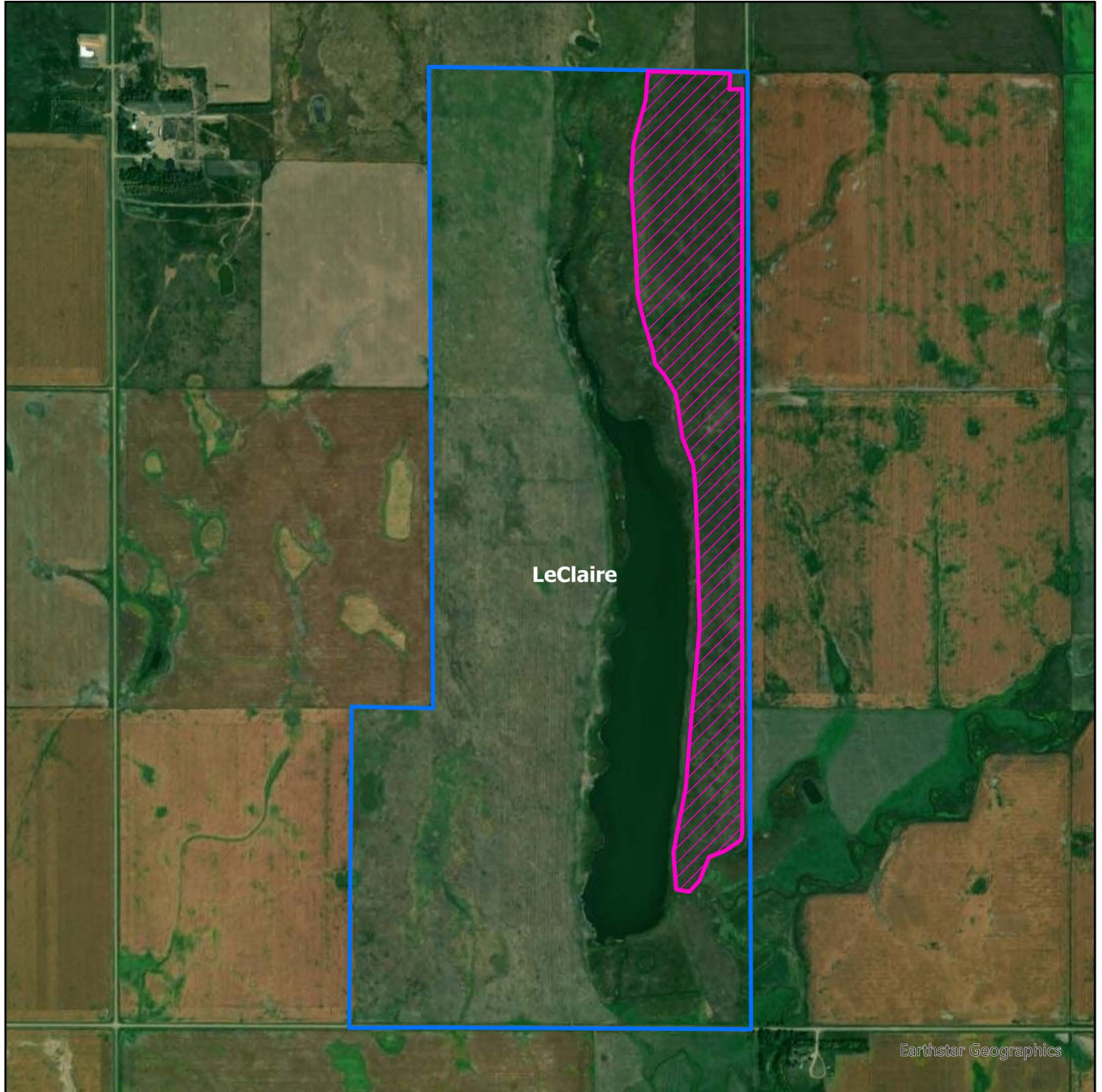
Hayed areas must be raked and all gates need to be closed after hay and equipment have been removed.



# LeClaire WPA

Legal Description 112-59-04&09

County Beadle



## Legend

Estimated Acres: 89.2

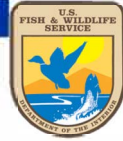
Hay Area

 2024



Hayed areas must be raked and all gates need to be closed after hay and equipment have been removed.



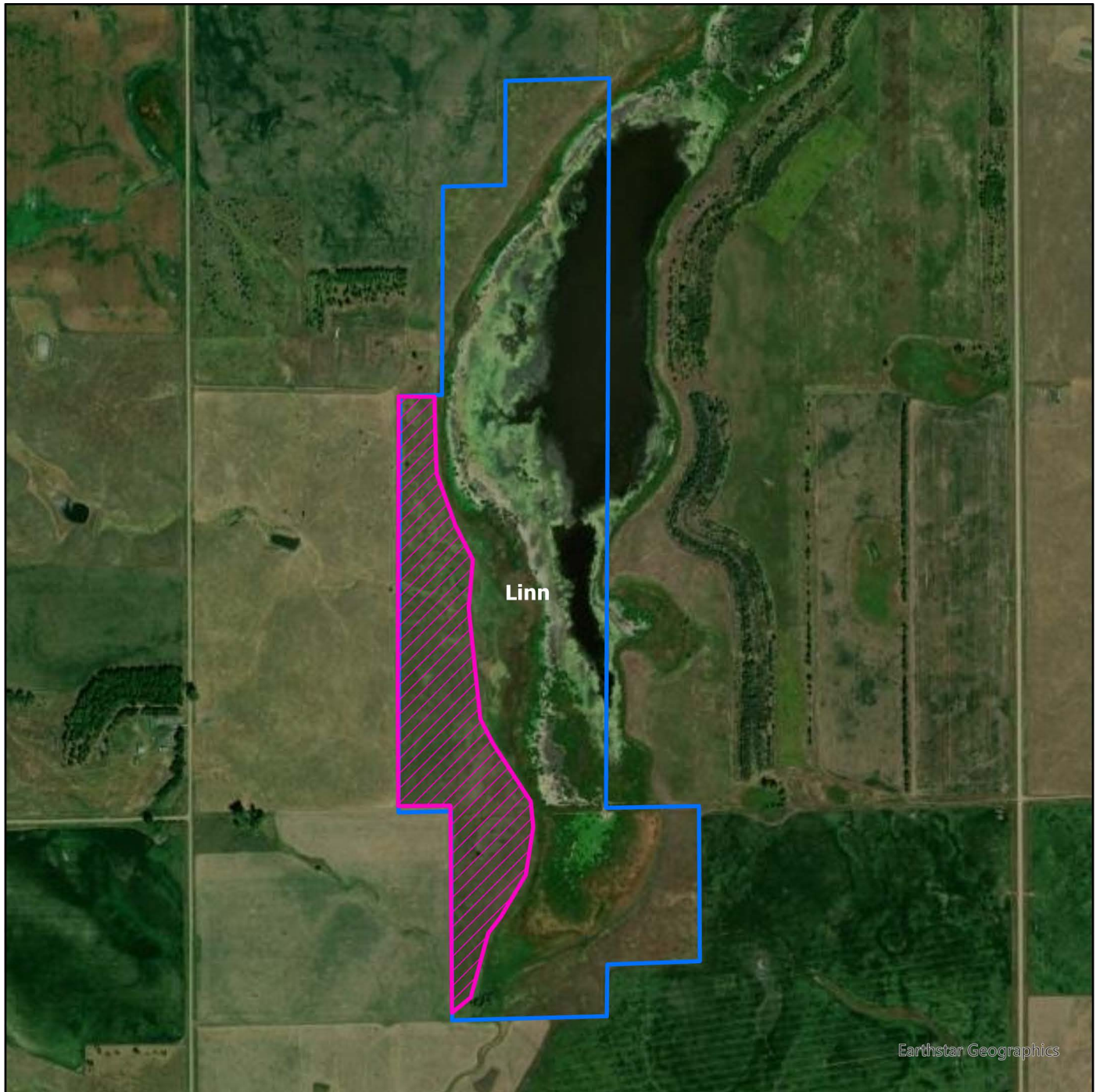


# Huron Wetland Management District

## Linn WPA

Legal Description **108-66-14**

County Jerauld



### Legend

Estimated Acres: 36.9

Hay Area



Hayed areas must be raked and all gates need to be closed after hay and equipment have been removed.



# McGillivrey WPA

Legal Description **110-66-28**

**County Hand**



## Legend

Estimated Acres: 14.2

Hay Area



Hayed areas must be raked and all gates need to be closed after hay and equipment have been removed.



# Wipf WPA

Legal Description **112-62-01**

County **Beadle**



## Legend

Estimated Acres: 16.9

Hay Area



Hayed areas must be raked and all gates need to be closed after hay and equipment have been removed.