



United States Department of the Interior



FISH AND WILDLIFE SERVICE Kulm Wetland Management District

IN REPLY REFER TO:

FWS/R6/Kulm WMD Hay 2024

MAILING ADDRESS:

Post Office Box E
Kulm, North Dakota 58456

STREET LOCATION:

One First Street SW
Kulm, North Dakota 58456

July 9, 2024

Dear Interested Haying Cooperator:

Enclosed you will find a list and a map of Waterfowl Production Areas available for haying in the Kulm Wetland Management District. Not all portions of WPAs are open to haying in all cases. **Contact this office to request an aerial imagery map of those areas you are interested in placing a bid.** These unit maps can also be found on our website at fws.gov/refuge/kulm-wetland-management-district. All listed acreages are approximate depending on the amount of water/wet areas on the unit. GPS acreage will be determined after the unit is hayed.

Please review the enclosed 2024 Haying Regulations before bidding on the units. Haying may not begin until **August 1**. This date allows more late nesting waterfowl species to successfully complete the nesting process and young grassland birds to fledge before haying activities begin. Other important dates include: Hay cutting and baling period (August 1-21) and the equipment and bale removal date (September 15). Failure to remove hay and equipment by September 15 will result in forfeiture of future bidding privileges on haying units, issuances of a fine, and/or both.

Please be aware that you may bid on multiple hay units, however, if you are the high bidder on units in which we receive multiple bids, you will be limited to one unit of your choice. If you are the high bidder on one unit and the only bidder on another unit(s), you may hay all units.

Bids must be received in office by 3:30 pm on Wednesday, July 24, 2024. Bids may be submitted by mail, email, fax, or personal delivery. No PHONE bids will be accepted. Bids will be opened on Friday, July 26th. The public is welcome to attend the opening at 9:00 am in the office.

Submit bids to: Mail: Kulm WMD Haying, P.O. Box E, Kulm, ND 58456
 Email: kulmwetlands@fws.gov
 Fax: 701-647-2221

If you have any questions regarding the bid process or about any of the Waterfowl Production Areas listed, please contact the office at (701) 647-2866.

Sincerely,

Wayne A. Henderson
Wetland District Manager

2024 HAYING REGULATIONS KULM WETLAND MANAGEMENT DISTRICT

1. To be eligible to bid, you must be a current livestock operator.
2. Haying operations may begin on August 1 unless otherwise noted.
3. Haying operations must be completed by August 21.
4. All bales and equipment must be removed from the WPA by September 15. Failure to remove hay and equipment will result in the loss of future bidding privileges and/or a violation notice with a fine.
5. **Hay harvested from the WPA must be used in your personal livestock operations and cannot be sold, traded, or given away.**
6. You may bid on multiple units. However, you cannot combine units. If you are the successful bidder on more than one unit in which multiple bids are received, you will be limited to one tract of your choice.
7. If you are the sole bidder on more than one unit, you may reject only one area. You will be financially responsible for all other units for which you were the successful bidder.
8. Acreages are approximate and will vary depending on wetland expansion, noxious weeds, rocky areas, rough areas, and equipment capabilities. **Your bid should reflect the entire unit depicted on the map, not on listed acreages.**
9. **All weedy areas within the specified unit must be cut, baled, and the bales removed from the WPA. Exceptions to this are leafy spurge and yellow toadflax. These areas must be cut, but the hay should be left lying.**
10. Vehicle travel to and from the hay areas should be limited to one trail. Do not drive over unmowed areas on the WPA.
11. Any fences or gates which are altered for access must be repaired/replaced to their original condition. Close all gates when bales are removed from the unit.
12. Excessive haying outside the unit boundaries will result in payment of twice the bid price and revocation of future haying privileges.
13. Payment due for hay will be calculated after the haying has been completed. A bill for collection will be sent to you with directions to make payments.
14. Failure to pay bill will result in loss of future bidding privileges, and you will be subject to late fees and/or Collections.
15. In cases where no bids were received for units, the Kulm WMD reserves the right to contact and offer the area to any person at a manager's discretion after the bid opening.
16. Minimum bids for hay will be \$15.00/acre. This price is compared to listed rates for USDA NASS North Dakota "Non-irrigated Tame Hayland Cash Rents and Prices". The rate was adjusted for later than typical haying dates, reduced protein & nutritional value, and above normal litter amounts.

Bids must be received at the Kulm Wetland Management District office by 3:30 PM on July 24th.
Bids will be accepted by mail, email, fax, or hand delivery. No PHONE bids will be accepted.
Envelopes should be marked WPA Hay Bid.

ANY VIOLATION OF THE ABOVE REGULATIONS MAY RESULT IN THE IMMEDIATE
CANCELLATION OF HAY PERMIT AND FORFEITURE OF FUTURE HAY BIDDING PRIVILEGES.

THE U.S. FISH AND WILDLIFE SERVICE RESERVES THE RIGHT TO REJECT ANY OR ALL BIDS.

Kulm Wetland Management District
1 First Street SW | P.O. Box E
Kulm, North Dakota 58456
701-647-2866 | kulmwetlands@fws.gov

WATERFOWL PRODUCTION AREA HAY BID FORM

I have read, understand, and agree to the regulations, conditions, and eligibility requirements for haying privileges and submit this bid accordingly.

Hay Unit: _____

Hay Bid: _____

(MINIMUM BID: \$ 15.00/ACRE) (The use of dollars and cents per acre will ensure that bids are not tied)

Signature

Date

Name: _____

Address: _____

Phone: _____

WATERFOWL PRODUCTION AREA HAY BID FORM

I have read, understand, and agree to the regulations, conditions, and eligibility requirements for haying privileges and submit this bid accordingly.

Hay Unit: _____

Hay Bid: _____

(MINIMUM BID: \$ 15.00/ACRE) (The use of dollars and cents per acre will ensure that bids are not tied)

Signature

Date

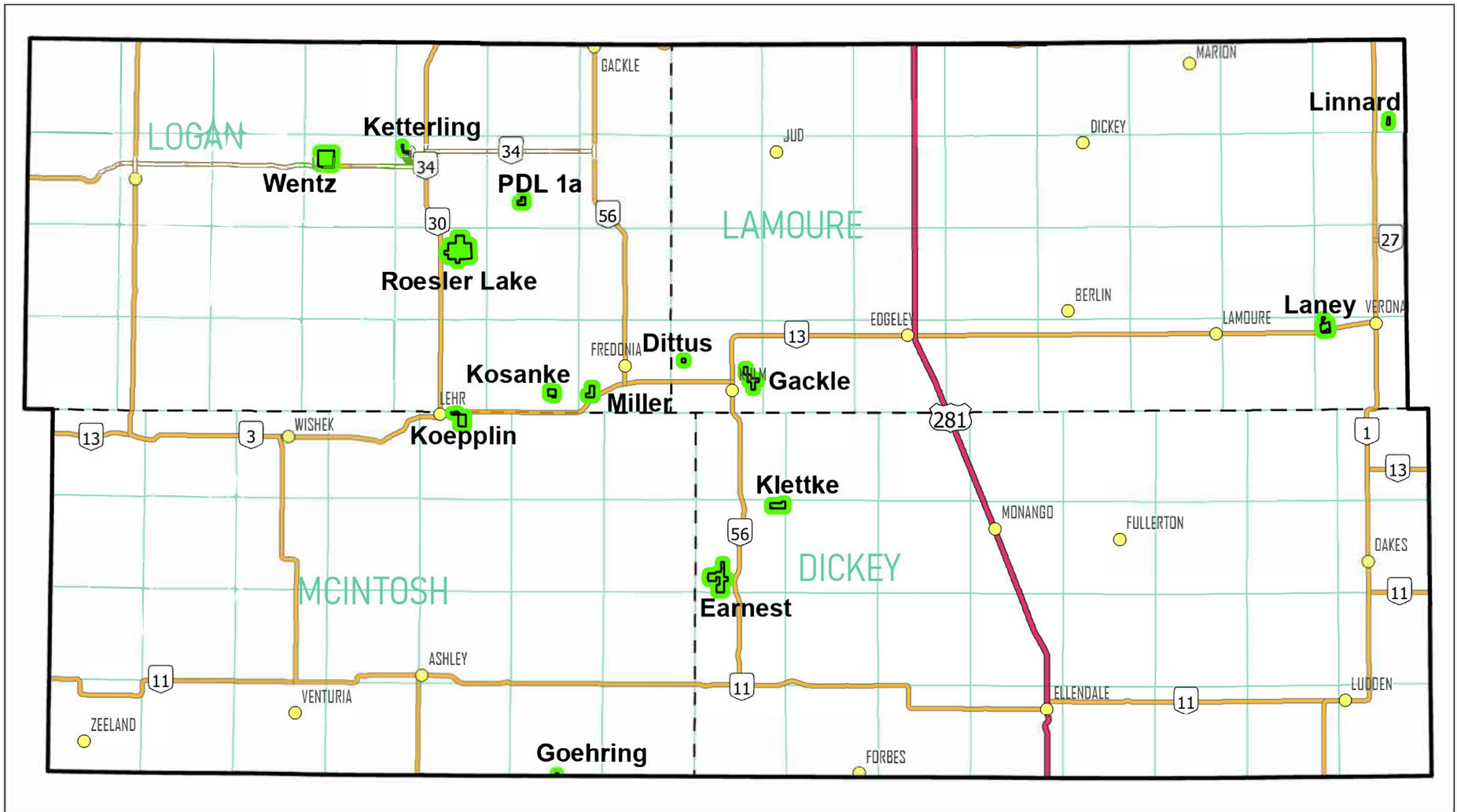
Name: _____

Address: _____

Phone: _____

Kulm Wetland Management District Hay Areas List 2024

County	Waterfowl Production Area	WPA Unit(s)	Approximate Acres to Hay	Start Date	Township	Section
Dickey	Earnest	1	66	8/1/2024	German	32
Dickey	Klettke ^{^^}	1 & 2	87	8/1/2024	German	1
LaMoure	Dittus	1	25	8/1/2024	Norden	18
LaMoure	Gackle	1	14	8/1/2024	Norden	23
LaMoure	Laney ^{***}	2	25	8/1/2024	Ovid	6
LaMoure	Linnard ^{***}	1	17	8/1/2024	Litchville	35
Logan	Ketterling	1	5	8/1/2024	Ketterling	7
Logan	Kosanke	2	3	8/1/2024	Lautt	26
Logan	Miller	2 & 3	44	8/1/2024	Haag	30
Logan	PDL 1a	1	1	8/1/2024	Moos	28
Logan	Roesler Lake	2	28	8/1/2024	Hillsburg	10
Logan	Roesler Lake	8	38	8/1/2024	Hillsburg	11
Logan	Wentz	1 & 2	43	8/1/2024	Grenz	8 & 17
McIntosh	Goehring	1	5	8/1/2024	Jewell	34
McIntosh	Koepplin	3	20	8/1/2024	Lowenthal	4 & 9
	^{^^} yellow toadflax present on hay unit					
	^{***} leafy spurge present on hay unit					



- Cities
- State Highway
- U.S. Highway
- County
- Township
- 2024 Hay WPAs (request unit map for specific areas of WPA)

The USFWS makes no warranty for use of this map and cannot be held liable for actions or decisions based on map content. This map uses data from the NDGISHUB and USFWS to depict waterfowl production areas that have areas available for haying in the Kulm Wetland Management District.

Map image is the intellectual property of Esri and is used herein under license. Copyright © 1995-2023 Esri and its licensors. All rights reserved.

Produced in the Kulm Wetland Management District
 Kulm, North Dakota
 Produced: July 8, 2024
 Basemap: ESRI State Boundaries



Datum: NAD 83

Kulm Wetland Management District
2023 Hay Bid Results

Dickey	Earnest	\$36.77	\$18.50	
Dickey	Quashnick	\$15.24	\$15.00	
Dickey	Young	\$45.25	\$36.50	
LaMoure	Lahlum	\$15.00		
LaMoure	Laney	\$47.21	\$42.55	
LaMoure	Liechty	\$42.62	\$41.75	
LaMoure	Strahm	\$26.10	\$21.21	
Logan	Fandrich			
Logan	Hehn			
Logan	Kosanke			
Logan	Kusler			
Logan	Lepp	\$15.05		
Logan	North Wentz			
Logan	PDL 1A			
Logan	PDL 1B			
McIntosh	Eszlinger 1	\$62.26	\$32.09	
McIntosh	Eszlinger 2	\$40.26	\$32.09	
McIntosh	Kempf			
McIntosh	Lake	\$29.42		
McIntosh	Schumacher			
McIntosh	Salzer	\$15.10		

2023 County Averages (Winning Bids)

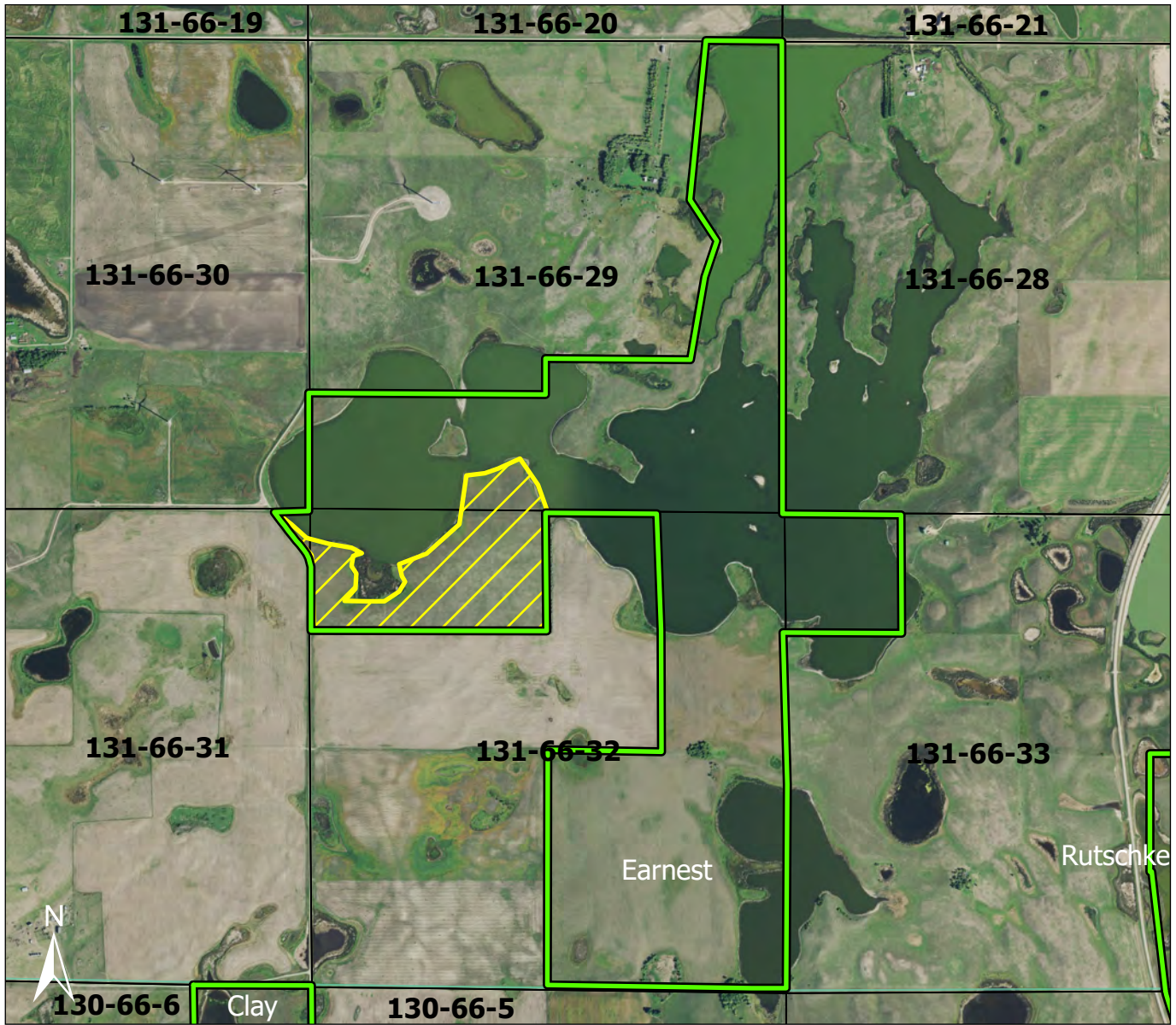
Dickey	\$32.42
LaMoure	\$32.73
Logan	\$15.05
McIntosh	\$34.72
<hr/>	
District Average	\$28.73

Bold indicates winning bid

~~Strikethrough~~ indicates unit not selected by a high bidder for multiple units.



EARNEST WPA



0 0.95 Miles Scale: 1:22,000 Produced: 07/08/2024

Haying Area:

Approximately 66 acres

	WPA Boundary
	Haying Area

Information to Note:

Cutting and baling dates: August 1 - August 21
Bale & equipment removal date: September 15

Access to all parts of a unit is not guaranteed and may be subject to weather and other conditions.

Contact: Wayne Henderson, wayne_henderson@fws.gov, 701-647-2866

The USFWS makes no warranty for use of this map and cannot be held liable for actions or decisions based on map content.
Produced by Kulm Wetland Management District.
Datum: NAD 83
Copyright © 1995-2023 Esri and its licensors. All rights reserved.
Basemap: NAIP Aerial Imagery 2022





KLETTKE WPA



0 0.4 Miles Scale: 1:10,000 Produced: 07/08/2024

Haying Area:

Approximately 87 acres

	WPA Boundary
	Haying Area

Information to Note:

Cutting and baling dates: August 1 - August 21
Bale & equipment removal date: September 15

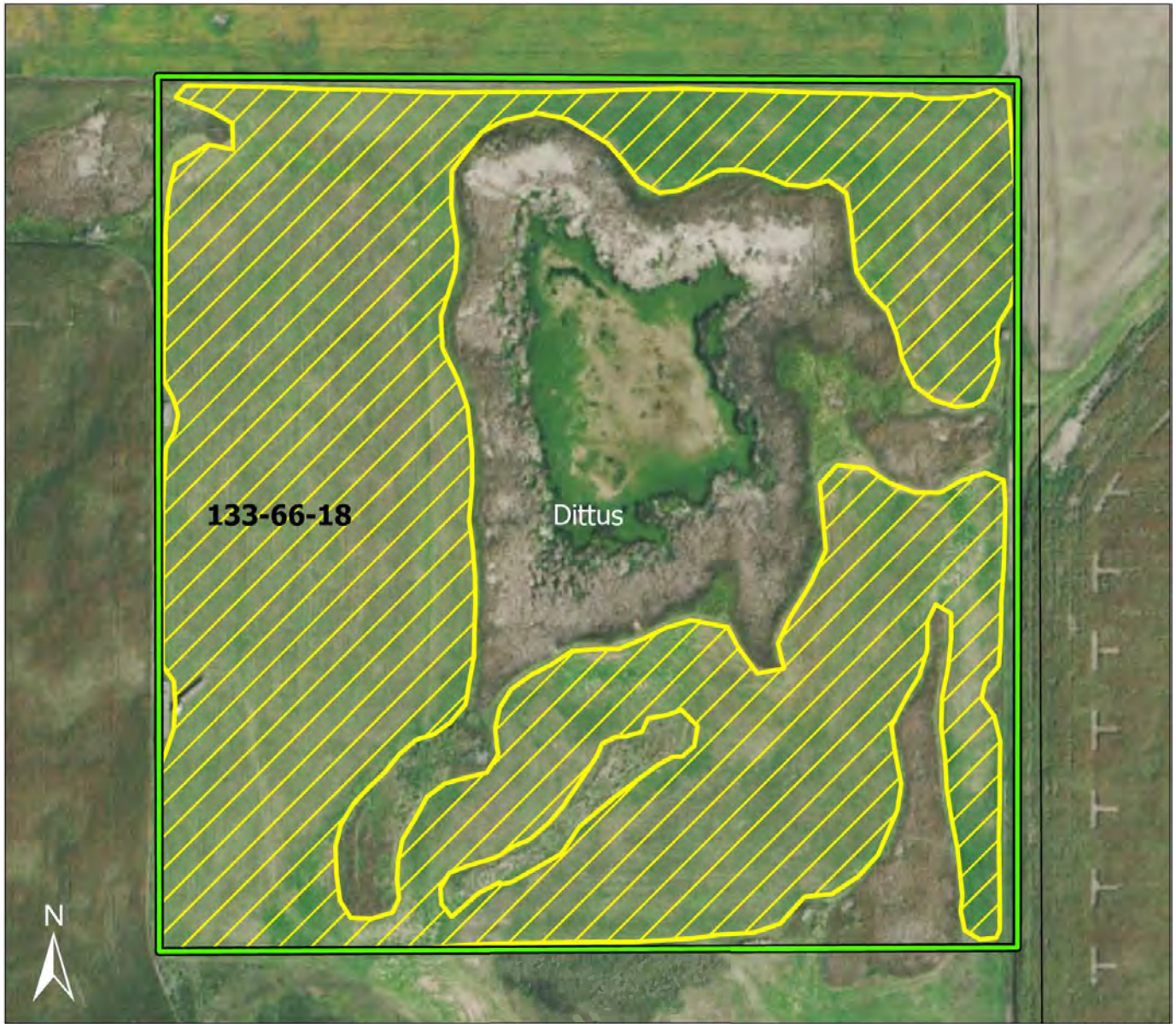
Access to all parts of a unit is not guaranteed and may be subject to weather and other conditions.

Contact: Wayne Henderson, wayne_henderson@fws.gov, 701-647-2866

The USFWS makes no warranty for use of this map and cannot be held liable for actions or decisions based on map content.
Produced by Kulm Wetland Management District.
Datum: NAD 83
Copyright © 1995-2023 Esri and its licensors.
All rights reserved.
Basemap: NAIP Aerial Imagery 2022



DITTUS WPA



Haying Area:

Approximately 25 acres

	WPA Boundary
	Haying Area

Information to Note:

Cutting and baling dates: August 1 - August 21
Bale & equipment removal date: September 15

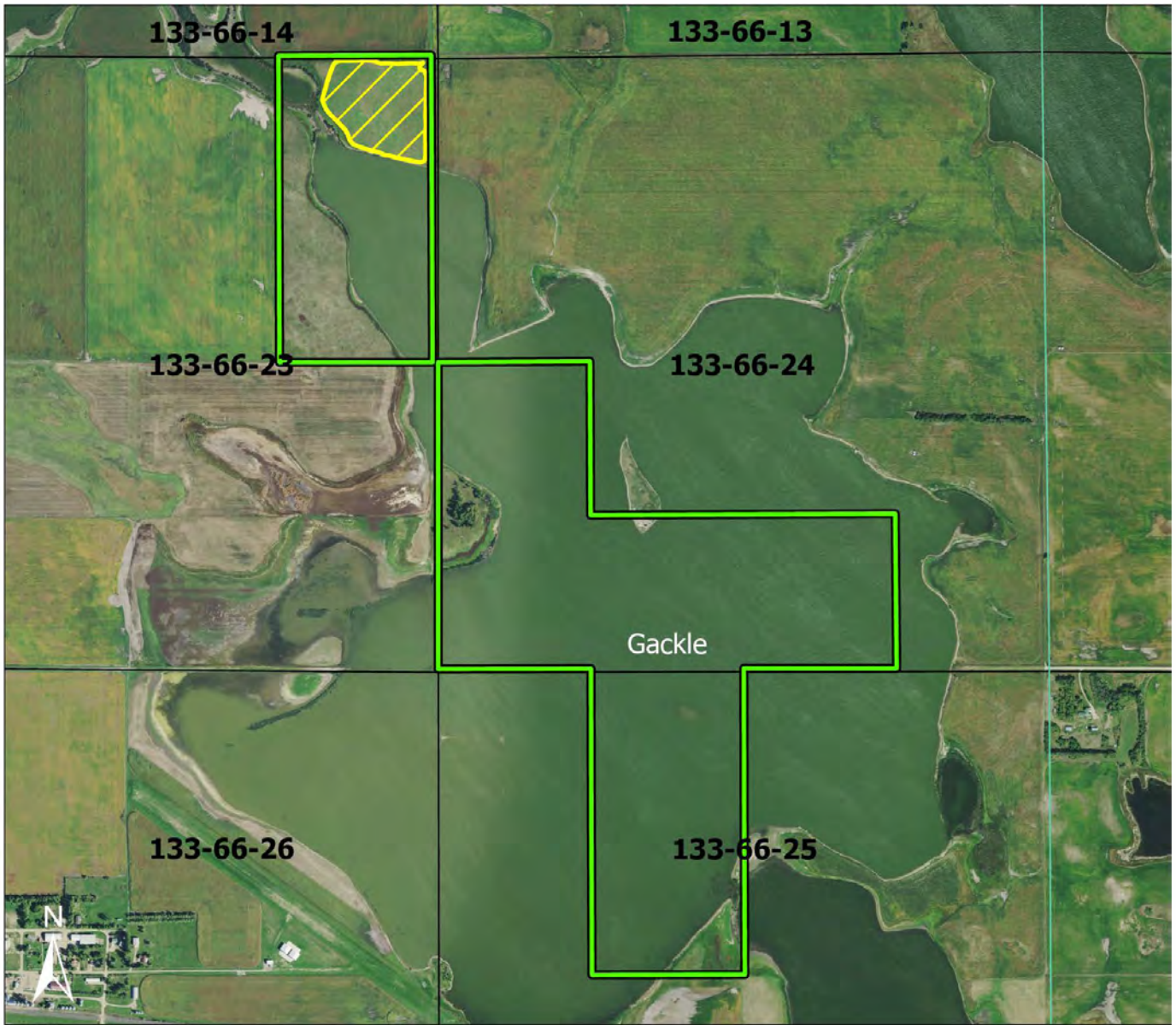
Access to all parts of a unit is not guaranteed and may be subject to weather and other conditions.

Contact: Krista Lundgren, krista_lundgren@fws.gov, 701-647-2866

The USFWS makes no warranty for use of this map and cannot be held liable for actions or decisions based on map content.
Produced by Kulm Wetland Management District.
Datum: NAD 83
Copyright © 1995-2023 Esri and its licensors. All rights reserved.
Basemap: NAIP Aerial Imagery 2022



GACKLE WPA



0 0.75 Miles Scale: 1:17,000 Produced: 07/03/2024

Haying Area:

Approximately 14 acres

	WPA Boundary
	Haying Area

Information to Note:

Cutting and baling dates: August 1 - August 21
 Bale & equipment removal date: September 15

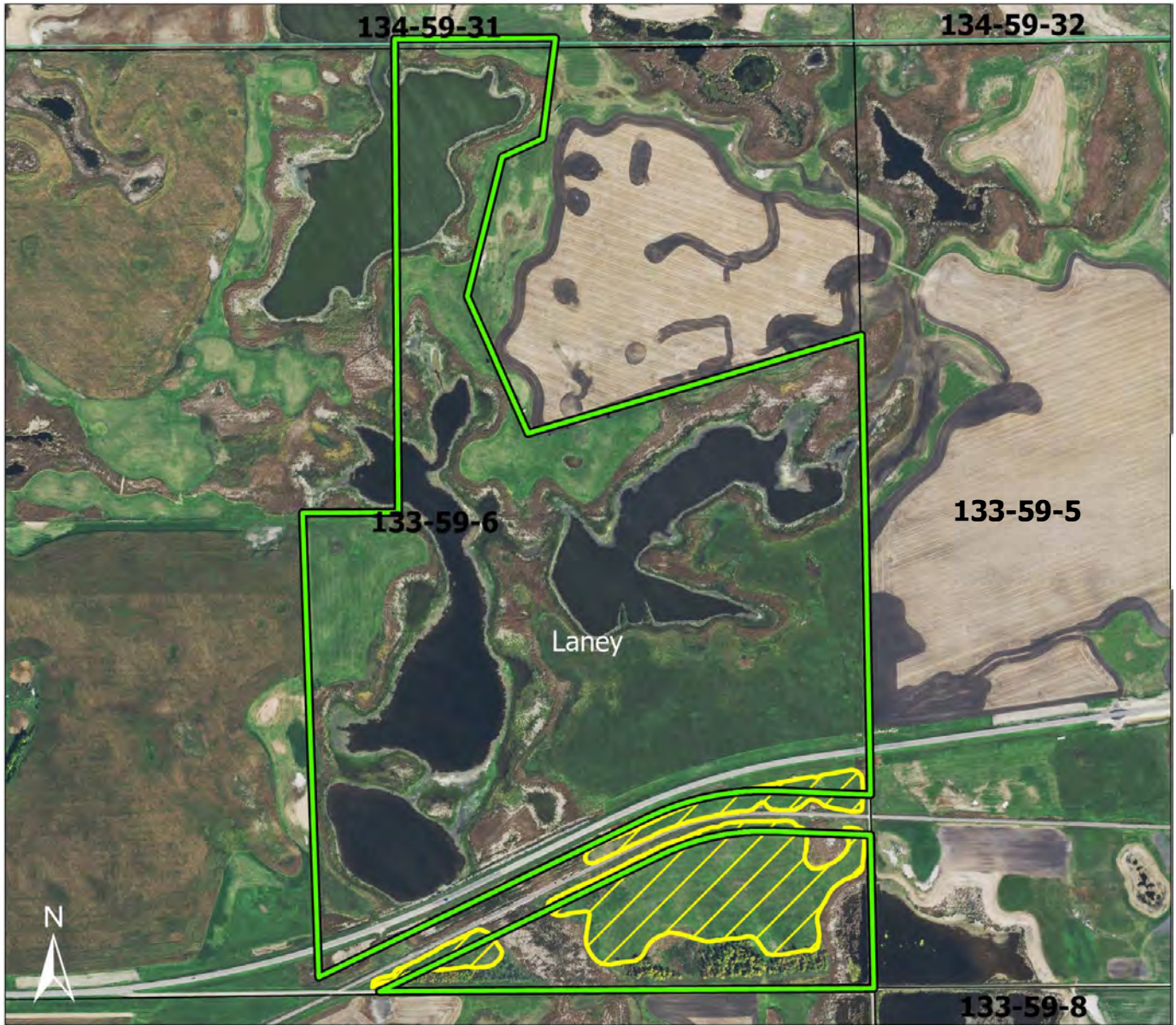
Access to all parts of a unit is not guaranteed and may be subject to weather and other conditions.

Contact: Krista Lundgren, krista_lundgren@fws.gov, 701-647-2866

The USFWS makes no warranty for use of this map and cannot be held liable for actions or decisions based on map content.
 Produced by Kulm Wetland Management District.
 Datum: NAD 83
 Copyright © 1995-2023 Esri and its licensors.
 All rights reserved.
 Basemap: NAIP Aerial Imagery 2022



LANEY WPA





Scale: 1:11,000

Produced: 07/03/2024

Haying Area:

Approximately 25 acres

	WPA Boundary
	Haying Area

Information to Note:

Cutting and baling dates: August 1 - August 21
 Bale & equipment removal date: September 15
 *There is leafy spurge on this WPA.

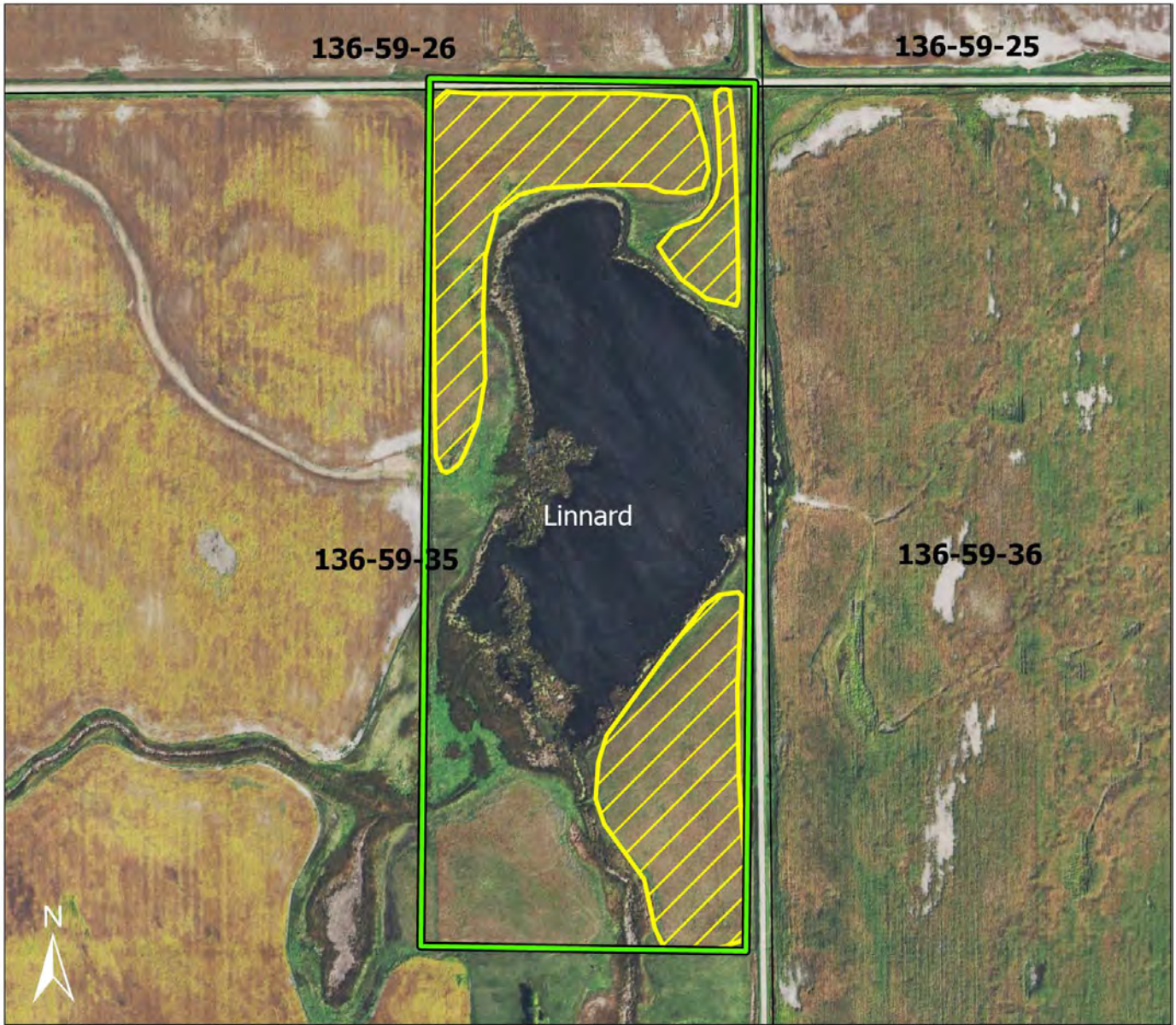
Access to all parts of a unit is not guaranteed and may be subject to weather and other conditions.

Contact: Krista Lundgren, krista_lundgren@fws.gov, 701-647-2866

The USFWS makes no warranty for use of this map and cannot be held liable for actions or decisions based on map content.
 Produced by Kulm Wetland Management District.
 Datum: NAD 83
 Copyright © 1995-2023 Esri and its licensors.
 All rights reserved.
 Basemap: NAIP Aerial Imagery 2022



LINNARD WPA





0 0.25 Miles

Scale: 1:6,000

Produced: 07/03/2024

Haying Area:

Approximately 17 acres

	WPA Boundary
	Haying Area

Information to Note:

Cutting and baling dates: August 1 - August 21

Bale & equipment removal date: September 15

*There is scattered leafy spurge on this WPA

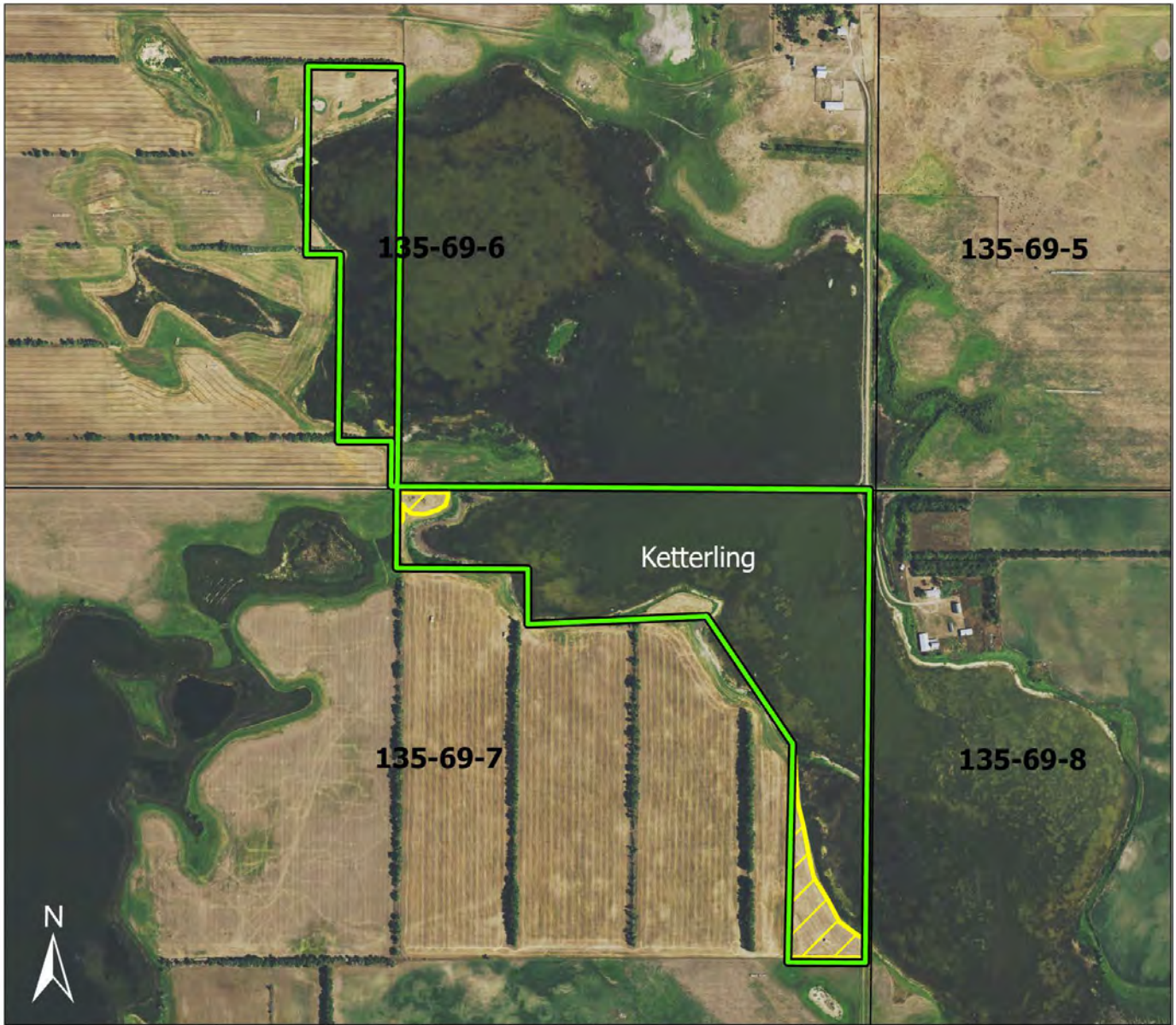
Access to all parts of a unit is not guaranteed and may be subject to weather and other conditions.

Contact: Krista Lundgren, krista_lundgren@fws.gov, 701-647-2866

The USFWS makes no warranty for use of this map and cannot be held liable for actions or decisions based on map content.
 Produced by Kulm Wetland Management District.
 Datum: NAD 83
 Copyright © 1995-2023 Esri and its licensors.
 All rights reserved.
 Basemap: NAIP Aerial Imagery 2022





KETTERLING WPA



Produced: 07/03/2024

Haying Area:

Approximately 5 acres

	WPA Boundary
	Haying Area

Information to Note:

Cutting and baling dates: August 1 - August 21
 Bale & equipment removal date: September 15

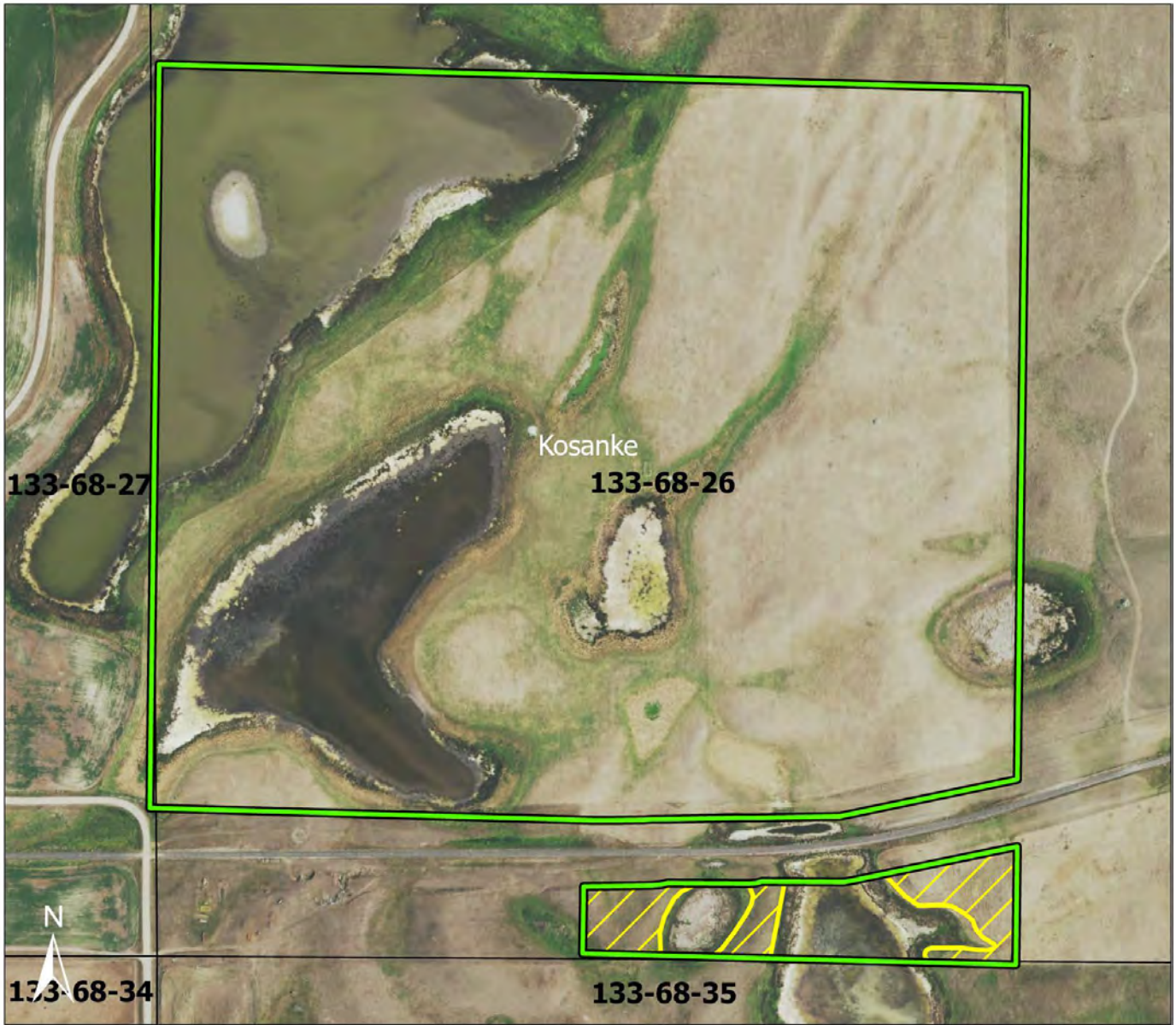
Access to all parts of a unit is not guaranteed and may be subject to weather and other conditions.

Contact: Krista Lundgren, krista_lundgren@fws.gov, 701-647-2866

The USFWS makes no warranty for use of this map and cannot be held liable for actions or decisions based on map content.
 Produced by Kulm Wetland Management District.
 Datum: NAD 83
 Copyright © 1995-2023 Esri and its licensors.
 All rights reserved.
 Basemap: NAIP Aerial Imagery 2022





KOSANKE WPA



Produced: 07/03/2024

Haying Area:

Approximately 3 acres

	WPA Boundary
	Haying Area

Information to Note:

Cutting and baling dates: August 1 - August 21
 Bale & equipment removal date: September 15

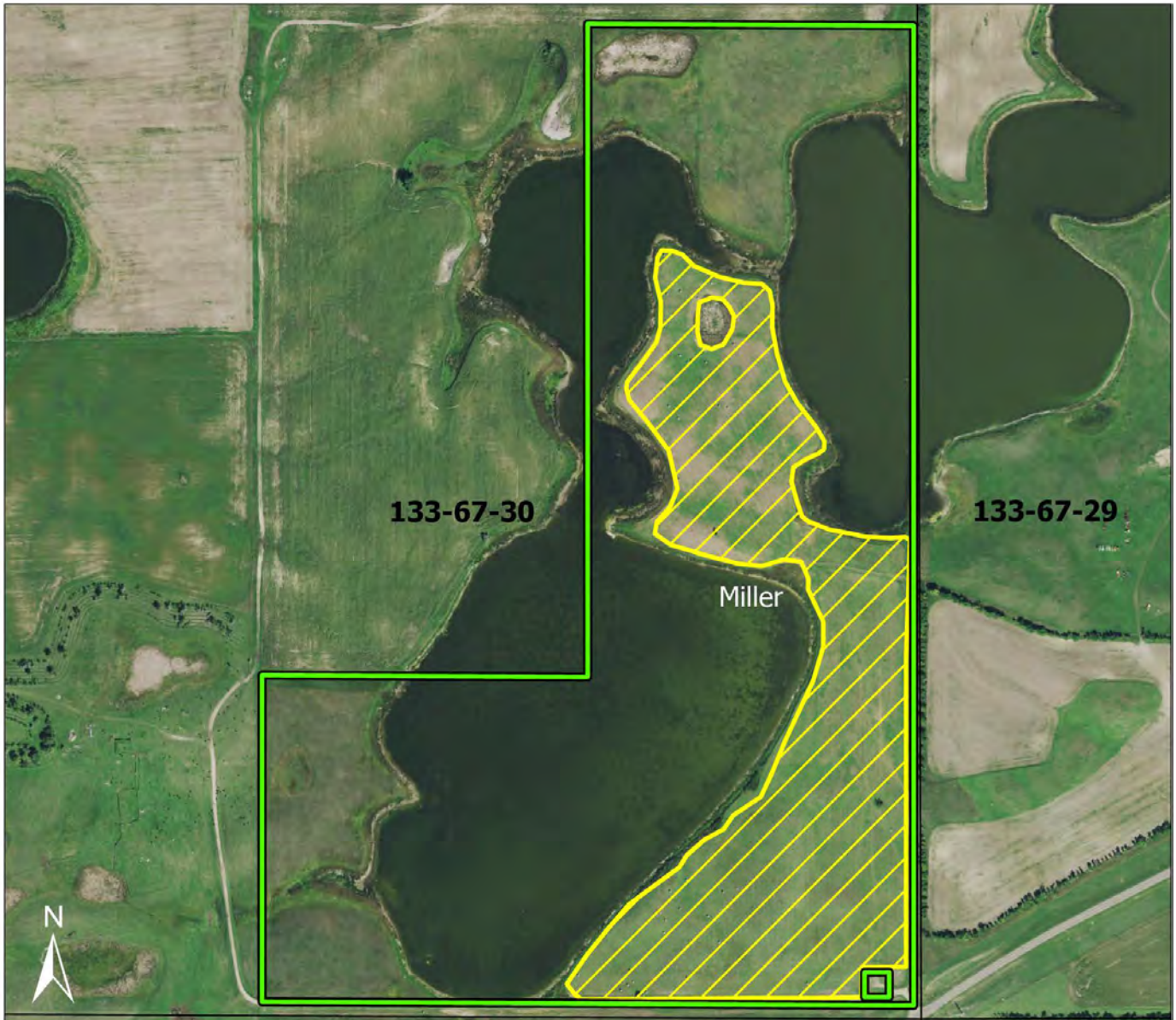
Access to all parts of a unit is not guaranteed and may be subject to weather and other conditions.

Contact: Krista Lundgren, krista_lundgren@fws.gov, 701-647-2866

The USFWS makes no warranty for use of this map and cannot be held liable for actions or decisions based on map content.
 Produced by Kulm Wetland Management District.
 Datum: NAD 83
 Copyright © 1995-2023 Esri and its licensors.
 All rights reserved.
 Basemap: NAIP Aerial Imagery 2022





MILLER WPA



Produced: 07/03/2024

Haying Area:

Approximately 44 acres

	WPA Boundary
	Haying Area

Information to Note:

Cutting and baling dates: August 1 - August 21
Bale & equipment removal date: September 15

Access to all parts of a unit is not guaranteed and may be subject to weather and other conditions.

Contact: Krista Lundgren, krista_lundgren@fws.gov, 701-647-2866

The USFWS makes no warranty for use of this map and cannot be held liable for actions or decisions based on map content.
Produced by Kulm Wetland Management District.
Datum: NAD 83
Copyright © 1995-2023 Esri and its licensors. All rights reserved.
Basemap: NAIP Aerial Imagery 2022





LOGAN PDL 1A WPA



Haying Area:

Approximately 1 acre

	WPA Boundary
	Haying Area

Information to Note:

Cutting and baling dates: August 1 - August 21
Bale & equipment removal date: September 15

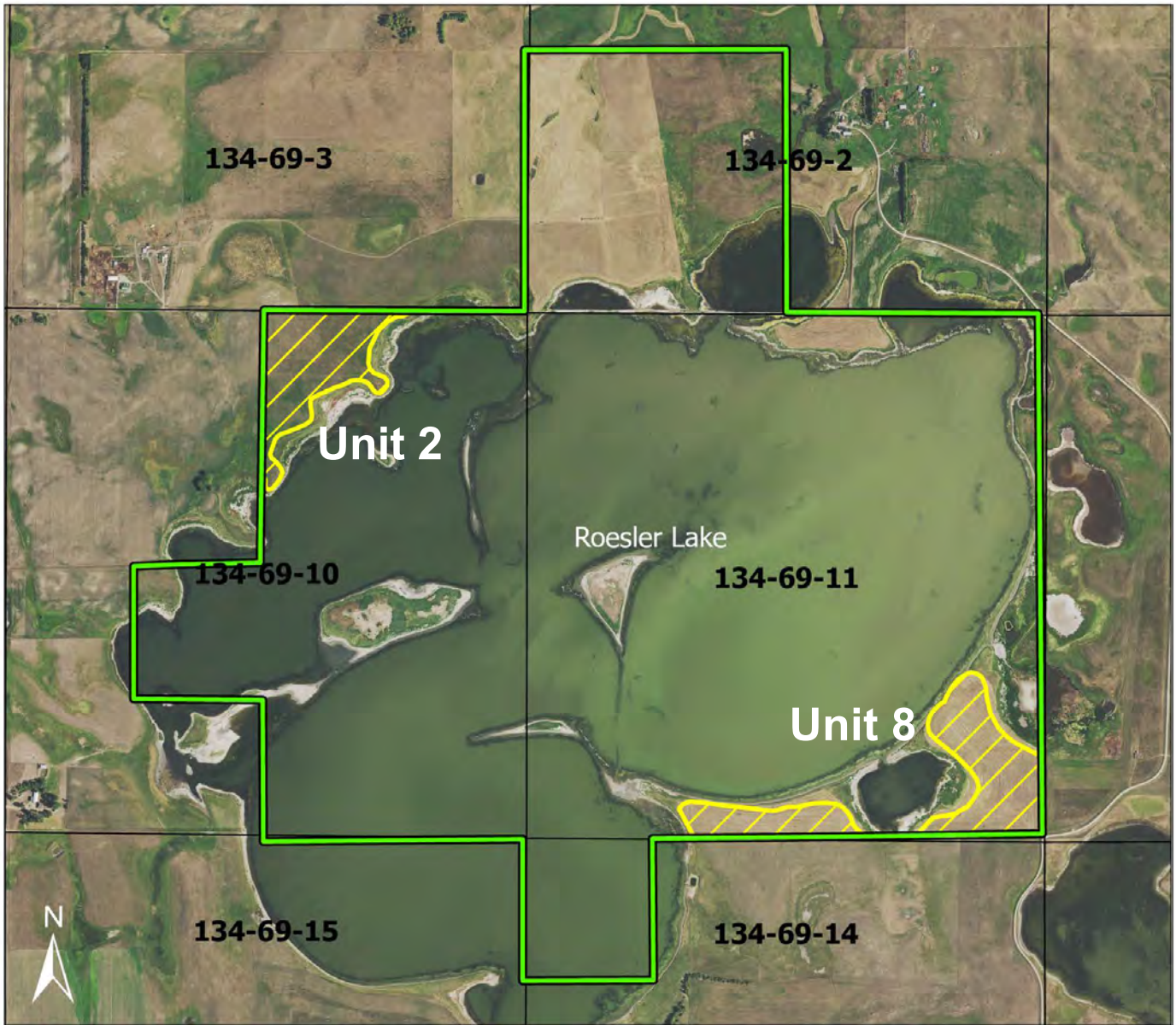
Access to all parts of a unit is not guaranteed and may be subject to weather and other conditions.

Contact: Krista Lundgren, krista_lundgren@fws.gov, 701-647-2866

The USFWS makes no warranty for use of this map and cannot be held liable for actions or decisions based on map content.
Produced by Kulm Wetland Management District.
Datum: NAD 83
Copyright © 1995-2023 Esri and its licensors.
All rights reserved.
Basemap: NAIP Aerial Imagery 2022



ROESLER LAKE WPA



Produced: 07/03/2024

Haying Area:

Unit 2: Approximately 28 acres

Unit 8: Approximately 38 acres

**These are
separate bid areas**

	WPA Boundary
	Haying Area

Information to Note:

Cutting and baling dates: August 1 - August 21

Bale & equipment removal date: September 15

Access to all parts of a unit is not guaranteed and may be subject to weather and other conditions.

Contact: Krista Lundgren, krista_lundgren@fws.gov, 701-647-2866

The USFWS makes no warranty for use of this map and cannot be held liable for actions or decisions based on map content.
 Produced by Kulm Wetland Management District.
 Datum: NAD 83
 Copyright © 1995-2023 Esri and its licensors.
 All rights reserved.
 Basemap: NAIP Aerial Imagery 2022





WENTZ WPA



Produced: 07/03/2024

Haying Area:

Approximately 43 acres

	WPA Boundary
	Haying Area

Information to Note:

Cutting and baling dates: August 1 - August 21
 Bale & equipment removal date: September 15

Access to all parts of a unit is not guaranteed and may be subject to weather and other conditions.

Contact: Krista Lundgren, krista_lundgren@fws.gov, 701-647-2866

The USFWS makes no warranty for use of this map and cannot be held liable for actions or decisions based on map content.
 Produced by Kulm Wetland Management District.
 Datum: NAD 83
 Copyright © 1995-2023 Esri and its licensors. All rights reserved.
 Basemap: NAIP Aerial Imagery 2022





GOEHRING WPA



Produced: 07/08/2024

Haying Area:

Approximately 5 acres

	WPA Boundary
	Haying Area

Information to Note:

Cutting and baling dates: August 1 - August 21
 Bale & equipment removal date: September 15

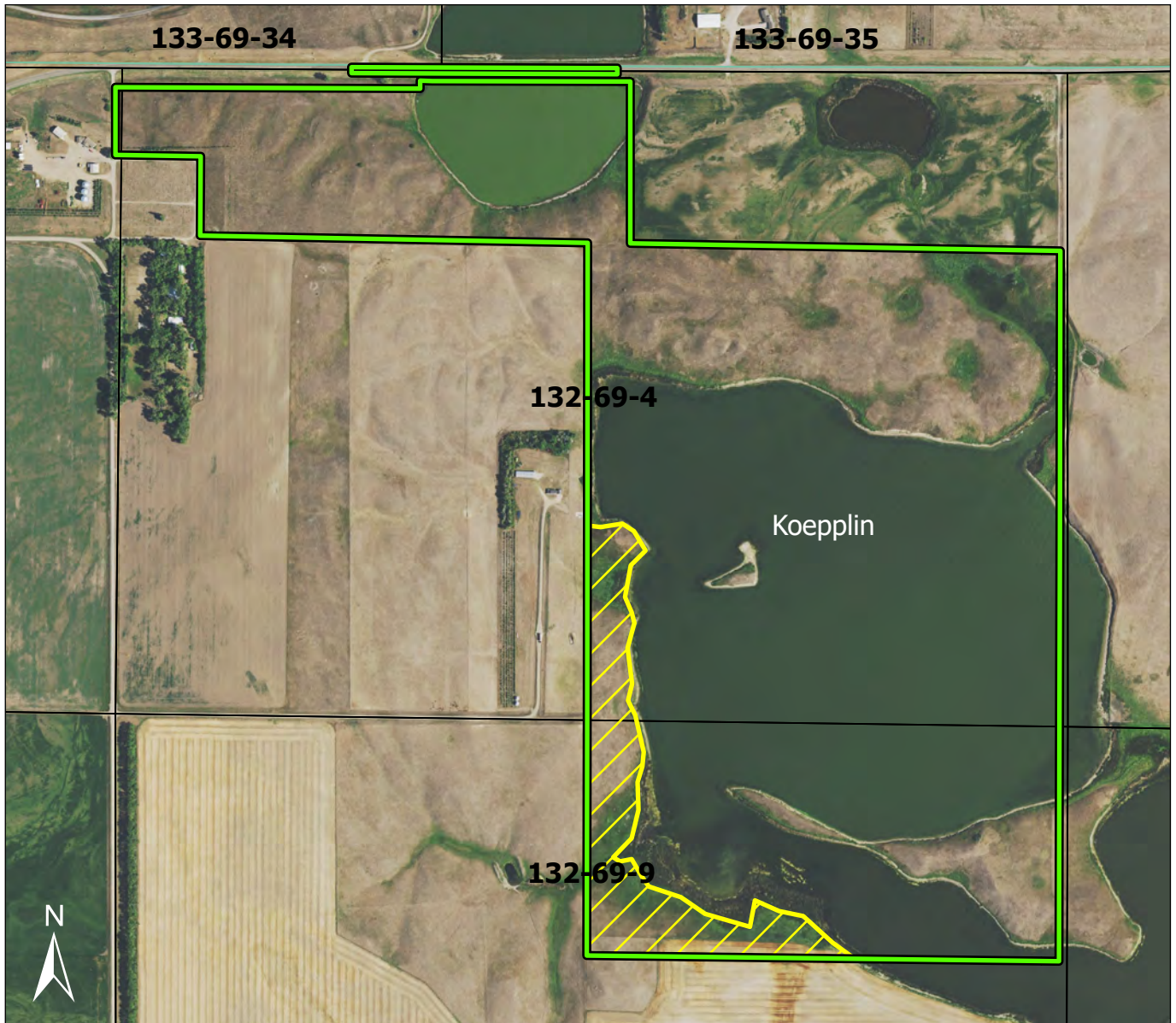
Access to all parts of a unit is not guaranteed and may be subject to weather and other conditions.

Contact: Wayne Henderson, wayne_henderson@fws.gov, 701-647-2866

The USFWS makes no warranty for use of this map and cannot be held liable for actions or decisions based on map content.
 Produced by Kulm Wetland Management District.
 Datum: NAD 83
 Copyright © 1995-2023 Esri and its licensors. All rights reserved.
 Basemap: NAIP Aerial Imagery 2022



KOEPLIN WPA



Produced: 07/08/2024

Scale: 1:11,000

Haying Area:

Approximately 20 acres

	WPA Boundary
	Haying Area

Information to Note:

Cutting and baling dates: August 1 - August 21
 Bale & equipment removal date: September 15

Access to all parts of a unit is not guaranteed and may be subject to weather and other conditions.

Contact: Wayne Henderson, wayne_henderson@fws.gov, 701-647-2866

The USFWS makes no warranty for use of this map and cannot be held liable for actions or decisions based on map content.
 Produced by Kulm Wetland Management District.
 Datum: NAD 83
 Copyright © 1995-2023 Esri and its licensors. All rights reserved.
 Basemap: NAIP Aerial Imagery 2022