

# News Release



Department of the Interior  
U.S. Fish & Wildlife Service  
Willamette Valley National Wildlife Refuge Complex  
26208 Finley Refuge Road  
Corvallis, Oregon 97333  
Phone: 541/757-7236  
[http://www.fws.gov/refuge/William\\_L\\_Finley/](http://www.fws.gov/refuge/William_L_Finley/)

---

**Date:** April 10, 2024

**Contact:** Brian Root, Refuge Biologist

## William L. Finley National Wildlife Refuge (Main Unit) 2024 Fall Black-tailed Deer Hunt

Black-tailed deer hunting will be allowed at designated portions of the William L. Finley National Wildlife Refuge Main Unit (Finley NWR) during late August through October 2024. See refuge maps at the website link below.

Additional black-tailed deer hunting opportunities will be available at the Finley NWR Snag Boat Bend Unit (Linn County) during the 2024-2025 hunting season. See separate announcement and regulations, which will be available once 2024-2025 waterfowl regulations are finalized (usually in July).

As in previous years, the Finley NWR Main Unit (Benton County) will provide deer hunting opportunities for archery and short-range firearms in Zones 1 and 2, as per the regulations below. Hunters must possess a valid Oregon state General Archery, Willamette Unit 615, or General Any Legal Weapon tag to hunt deer on Finley NWR.

### Archery – only tag:

- With a General Archery deer tag, archery hunting is allowed in **Zones 1 and 2** from August 31<sup>st</sup> through September 29<sup>th</sup>. One deer of either sex may be harvested.

### Firearms (“Any Legal Weapon”) tag:

- In **Zone 1**, short-range firearms (shotgun with slugs, muzzleloader) and archery hunting are allowed with a Willamette Unit 615 tag from September 1<sup>st</sup> through October 31<sup>st</sup>, and with a General Any Legal Weapon deer tag from October 5<sup>th</sup> through October 31<sup>st</sup>.
  - buckshot and centerfire/rimfire rifles are **NOT** allowed
- In **Zone 2**, hunters with Willamette Unit 615 or General Any Legal Weapon deer tags are limited to **archery hunting ONLY**, within the season dates specified above for Zone 1. Zone 2 includes the areas surrounding the Woodpecker Loop Trail, Intertie Trail, and Mill Hill Trail.
- One deer of either sex may be harvested with a General Archery or Willamette Unit 615 tag. Only deer with one visible antler may be harvested with a General Any Legal Weapon deer tag.

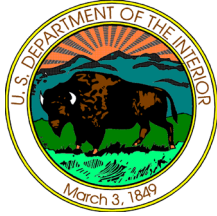
At the Finley NWR Main Unit, self-service hunt kiosks will be located along Finley Refuge Road at the Display Pond parking area and the Turtle Flats restrooms, as well as along Bruce Road near the east end of McFadden

Marsh bridge. Maps and regulations are posted at the hunt kiosks and on the Refuge website:  
[https://www.fws.gov/refuge/William\\_L\\_Finley/](https://www.fws.gov/refuge/William_L_Finley/)

Hunters are permitted on refuge one hour before and one hour after legal hunting time. Hunters must have a current Oregon hunting license and valid state-issued deer tag. Hunters under 18 must have their hunter safety card on their person. All hunters must visit the Refuge website or one of the self-service hunt kiosks on or before their first hunt day to read the most up-to-date Refuge hunt regulations. Hunters may use portable or climbing deer stands. Overnight camping and after-hours parking are prohibited on the Refuge.

Persons possessing, transporting, or carrying firearms on National Wildlife Refuges must comply with all provisions of State and local law. Persons may only use (discharge) firearms in accordance with Refuge regulations.

*The mission of the U.S. Fish and Wildlife Service is working with others to conserve, protect and enhance fish, wildlife, plants and their habitats for the continuing benefit of the American people. We are both a leader and trusted partner in fish and wildlife conservation, known for our scientific excellence, stewardship of lands and natural resources, dedicated professionals and commitment to public service. For more information on our work and the people who make it happen, visit [www.fws.gov](http://www.fws.gov) --FWS--*



United States Department of the Interior  
U.S. FISH & WILDLIFE SERVICE  
26208 Finley Refuge Road  
Corvallis, Oregon 97333-9533  
Phone (541) 757-7236



## 2024 DEER HUNT INFORMATION

### WILLIAM L. FINLEY NATIONAL WILDLIFE REFUGE

**HUNTING IS ALLOWED, IN ACCORDANCE WITH OREGON STATE REGULATIONS, AND SUBJECT TO THE FOLLOWING CONDITIONS:**

---

#### **GENERAL GAME REGULATIONS**

- **Hunting for black-tailed deer ONLY** during specified seasons on William L. Finley National Wildlife Refuge (NWR); see Deer Hunt Calendar.
- Hunting is permitted seven days a week. Hunters are permitted on refuge one (1) hour before and one (1) hour after legal hunting time. **You must contact a refuge law enforcement officer after hours to retrieve a wounded animal.** Normal Refuge hours are dawn to dusk daily.
- Unless the dates are listed as archery only, all refuge hunting is restricted to archery, shotguns using slugs, and muzzleloaders.
- Either sex deer may be harvested with appropriate state-issued tag.
- We allow only portable hunting stands and blinds. Hunters are limited to one (1) stand/blind on the refuge at any time. Hunters may erect their stand or blind one (1) day prior to their permitted refuge hunt and must remove it the last day they hunt. Hunters must permanently affix the owner's name, address, and phone number to stands and blinds.
- Hunters under 18 must have their hunter safety card on their person.
- Hunters must visit the Refuge website or one of the self-service hunt kiosks on or before their first hunt day to read the most up-to-date Refuge hunt regulations.
- Persons possessing, transporting, or carrying firearms on national wildlife refuges must comply with all provisions of State and local law.
- Note:
  - Deer hunting is not currently permitted at Ankeny NWR or Baskett Slough NWR.
  - **See separate regulations for deer and waterfowl hunting opportunities at the Snag Boat Bend Unit** (south of Peoria, OR).

#### **PROHIBITED ACTIVITIES**

- Overnight camping
- After hours parking
- The use of nails, wire, screws or bolts to attach a stand to a tree, or hunting from a tree into which a metal object has been driven to support a hunter
- Cutting or removing trees and other vegetation
- The use of flagging, paint, blazes, tacks, or other types of markers
- The use of dogs to hunt or track wounded game
- The use of trail cameras
- The use or possession of alcoholic beverages or controlled substances

## 2024 William L. Finley NWR Deer Hunt Calendar

Tag Required	Month			Weapons Allowed	
	August	September	October	Zone 1	Zone2
General Archery*	31	30		Archery Only	Archery Only
Willamette Unit 615*		1	31	Archery, Shotgun with slugs, Muzzleloader	
General Any Legal Weapon**			5 31		

\*GENERAL ARCHERY AND WILLAMETTE UNIT 615 TAGS: ONE (1) DEER EITHER SEX

\*\*GENERAL "ANY LEGAL WEAPON" SEASON: ONE (1) BUCK DEER WITH VISIBLE ANTLER

### SELF-SERVICE HUNT KIOSKS and REFUGE WEBSITE INFORMATION

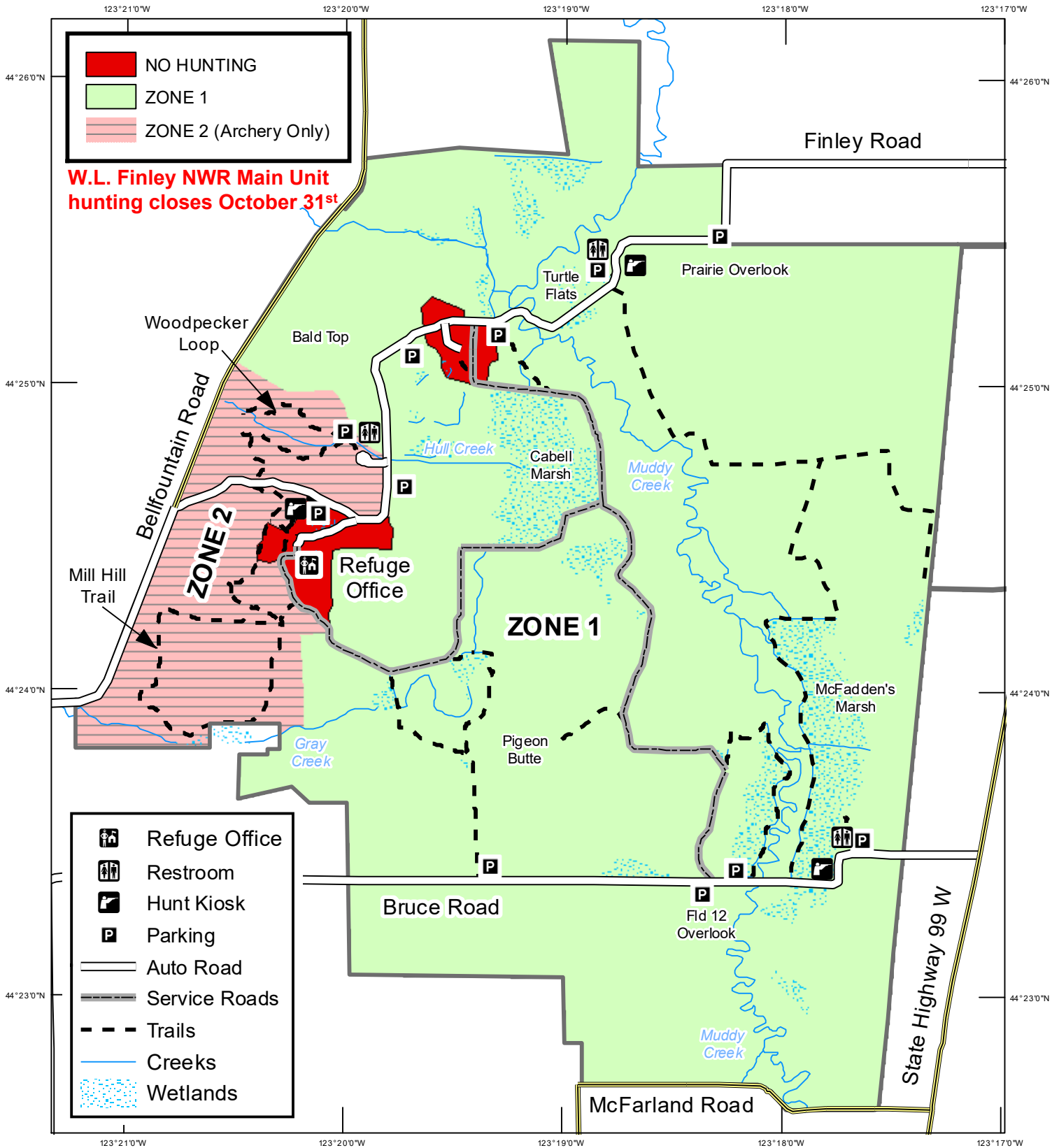
- Three self-service kiosks are located on the Refuge at the Mill Hill (Display Pond) Parking Area, across from the Turtle Flats restrooms, and the pullout east of the McFadden Marsh bridge on the north side of Bruce Road. Please see the **Deer Hunting Zone** map for kiosk locations.
- **FOR MORE DEER HUNT INFORMATION, PLEASE VISIT THE REFUGE WEBSITE:**  
[https://www.fws.gov/refuge/William\\_L\\_Finley/](https://www.fws.gov/refuge/William_L_Finley/)



U.S. Fish & Wildlife Service

William L. Finley National Wildlife Refuge  
Benton County, Oregon

# 2024 DEER HUNT



## ODFW Tag Required:

- General Archery (Deer)
- General "Any Legal Weapon" (Deer)
- Willamette Unit 615

