



# Federal Subsistence Board News Release



U.S. Fish and Wildlife Service  
Bureau of Land Management  
National Park Service  
Bureau of Indian Affairs

Forest Service

**For Immediate Release:**  
July 11, 2024

**Contact:** Spencer Rearden  
(907) 543-3151  
spencer\_rearden@fws.gov

## **Kuskokwim River Mainstem Fishing Opportunities**

Pursuant to authority delegated by the Federal Subsistence Board, the Yukon Delta National Wildlife Refuge (YDNWR) Manager, as In-Season Manager, hereby announces **five** gillnet fishing opportunities for **Federally qualified subsistence users only** downstream of the Kalskag Bluffs and Uknavik Slough (Kalskag Line) to the mouth of the Kuskokwim River at the Refuge boundary (see maps).

### **Gillnet (Drift and/or set):**

- **July 12, 2024 from 12:00 (noon) pm to July 13, 2024 12:00 (noon) pm (24 hours)**
- **July 19, 2024 from 12:00 (noon) pm to July 20, 2024 12:00 (noon) pm (24 hours)**
- **July 26, 2024 from 12:00 (noon) pm to July 27, 2024 12:00 (noon) pm (24 hours)**

During these three opportunities, gillnets are restricted to 6-inch or less mesh and may not exceed 45 meshes in depth and 50 fathoms (300-feet) in aggregate (total set and drift gillnet) length below the Johnson River and 25 fathoms (150 feet) in aggregate (total set and drift gillnet) length above the Johnson River.

### **Set gillnet only:**

- **July 16, 2024 from 12:00 (noon) pm to July 17, 2024 12:00 (noon) pm (24 hours)**
- **July 23, 2024 from 12:00 (noon) pm to July 24, 2024 12:00 (noon) pm (24 hours)**

During these two opportunities, gillnets are restricted to **set gillnets** with 6-inch or less mesh, 75 feet or less in length, and may not exceed 45 meshes in depth. Additionally, set gillnets must be attached to the bank, oriented perpendicular to the river and may not be operated more than 100 feet from the ordinary high-water mark.



# Federal Subsistence Board News Release



U.S. Fish and Wildlife Service  
Bureau of Land Management  
National Park Service  
Bureau of Indian Affairs

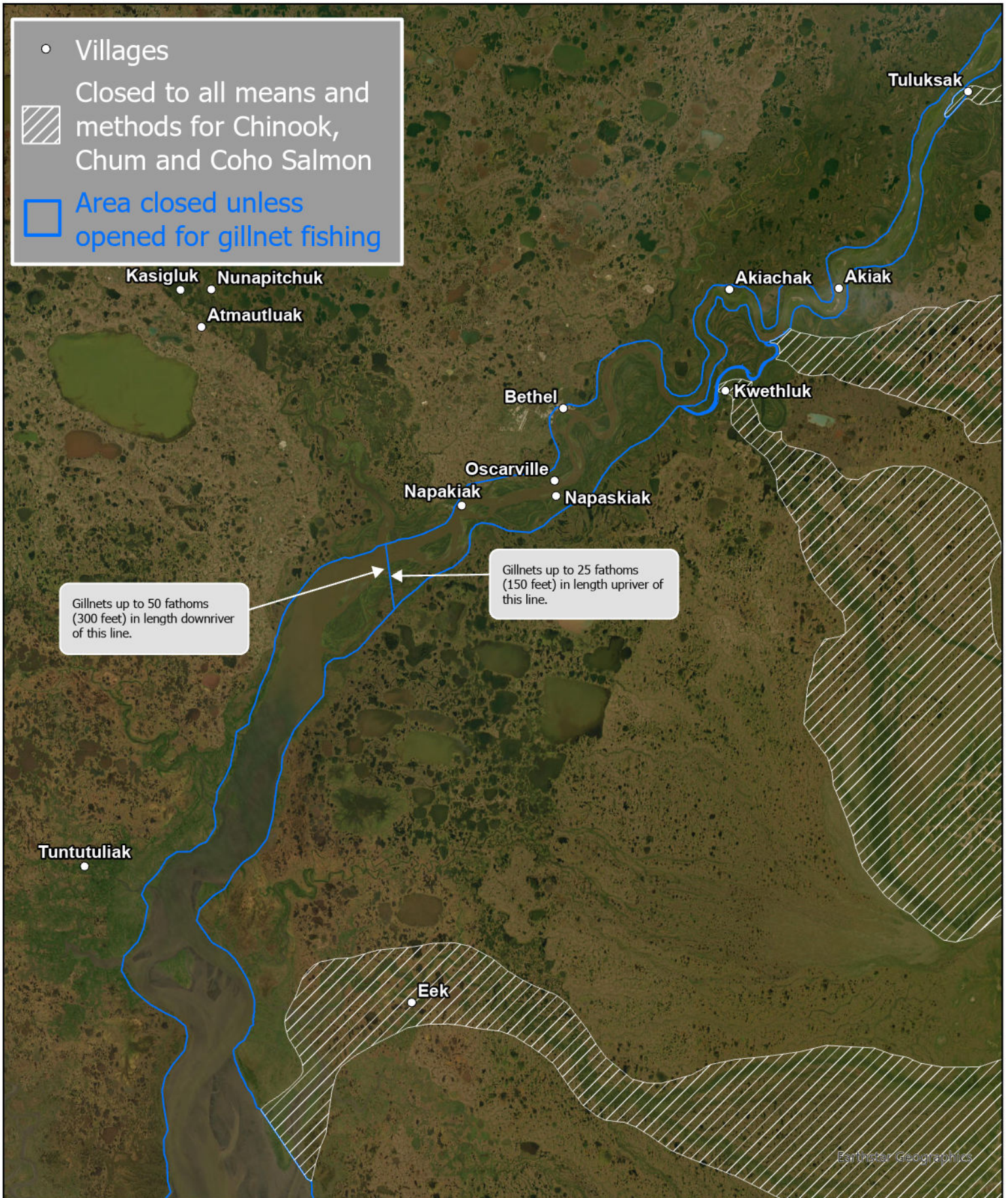
Forest Service

All species of salmon may be retained during these opportunities. The salmon bearing tributaries and the Aniak Box listed in FSA-YD-24- 01 will remain closed to all gillnets. When each of these harvest opportunities expire, Federal public waters of the Kuskokwim River, downstream of the Kalskag Bluffs and Uknavik Slough (Kalskag Line) to the mouth of the Kuskokwim River at the Refuge Boundary (see maps), will return to closed to the use of gillnets by all users for the protection of Chinook, Chum and Coho Salmon.

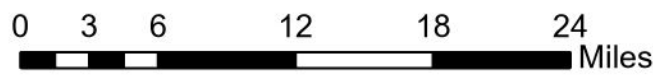
Information about the Federal Subsistence Management Program may be found on the web at [www.doi.gov/subsistence](http://www.doi.gov/subsistence) or by visiting [www.facebook.com/subsistencealaska](https://www.facebook.com/subsistencealaska).

**Missing out on the latest Federal subsistence issues?** If you'd like to receive emails and notifications on the Federal Subsistence Management Program you may subscribe for regular updates by emailing [fws-fsb-subsistence-request@lists.fws.gov](mailto:fws-fsb-subsistence-request@lists.fws.gov).

# Lower River Gillnet Fishing and Closure Area

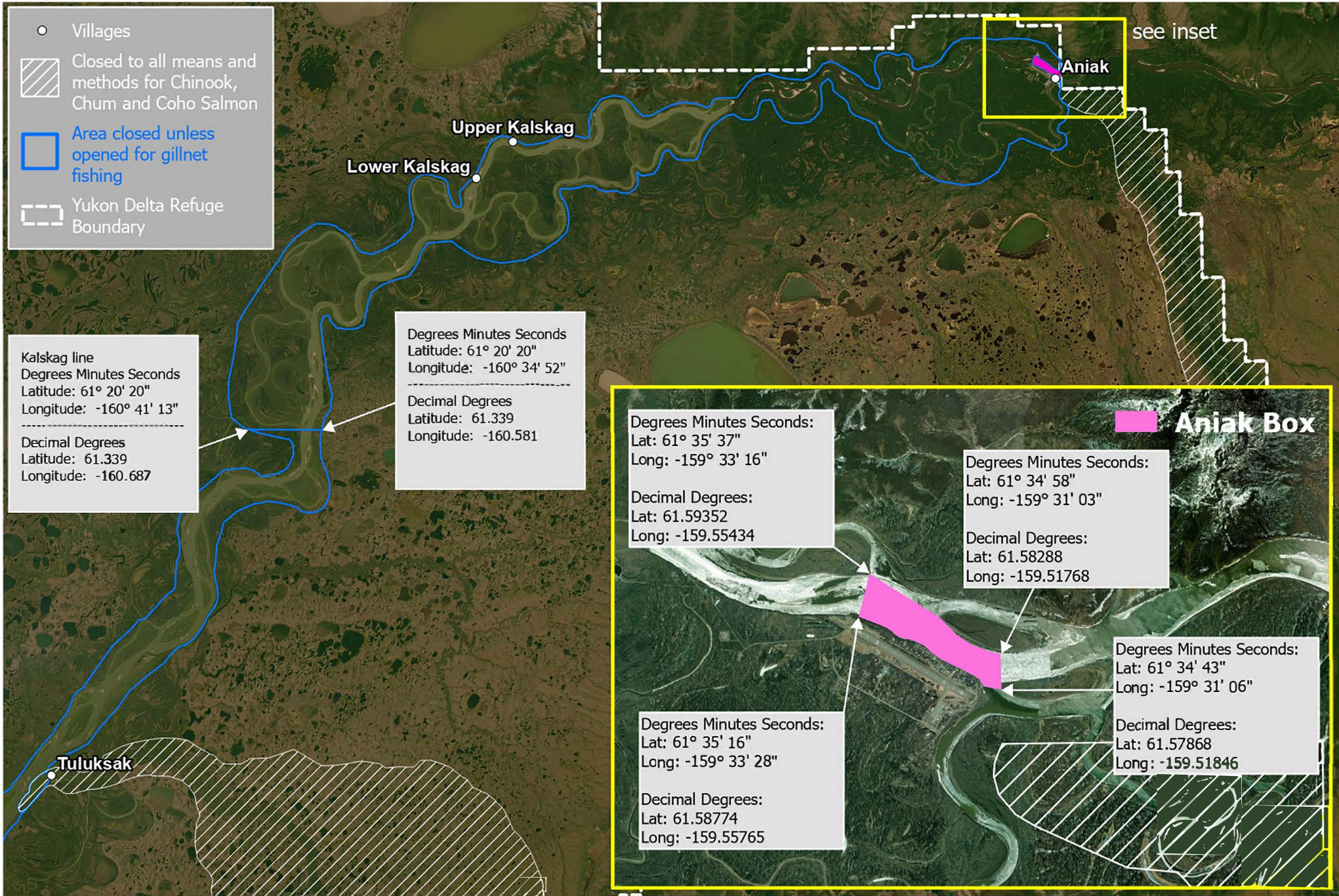


While the U.S. Fish & Wildlife Service makes every effort to represent the data shown on these maps as completely and accurately as possible, the USFWS gives no warranty, expressed or implied, as to the accuracy, reliability, or completeness of these data. In addition, the USFWS shall not be held liable for improper or incorrect use of the data described and/or contained herein. Graphical representations provided by the use of this data do not represent any legal description of the data herein and are provided only as a general representation of the data. Descriptions presented in special actions supersede any depictions provided in this map.



Earthstar Geographics

# Middle River Gillnet Fishing and Closure Area



While the U.S. Fish & Wildlife Service makes every effort to represent the data shown on these maps as completely and accurately as possible, the USFWS gives no warranty, expressed or implied, as to the accuracy, reliability, or completeness of these data. In addition, the USFWS shall not be held liable for improper or incorrect use of the data described and/or contained herein. Graphical representations provided by the use of this data do not represent any legal description of the data herein and are provided only as a general representation of the data. Descriptions presented in special actions supersede any depictions provided in this map.

