

Bayou Sauvage Urban Complex Annual User Brochure and Regulations 2024-2025

Bayou Sauvage Urban, Bayou Teche,
and Mandalay NWRs

**Bayou Sauvage Urban Refuges:
Hunting and Fishing (Bayou Sauvage Urban,
Bayou Teche, and Mandalay NWRs)**

When signed and in your possession, this serves as your approval for all refuge hunting and fishing activities and acknowledges your understanding of the regulations contained herein.

Signature (not transferrable)
Expires August 31, 2025

Bayou Sauvage Urban Complex Regulations

Refuge Introduction

Bayou Sauvage National Wildlife Refuges

Bayou Sauvage Urban National Wildlife Refuges(NWR) Complex consists of Bayou Sauvage Urban, Bayou Teche, and Mandalay National Wildlife Refuges (NWRs). Supporting staff consisting of administrative, law enforcement, refuge management, visitor services, biological, forestry, and maintenance professionals are centrally located and support all refuges in the complex.

The Complex Headquarters is located in Lacombe, Louisiana. Headquarters office hours are Monday-Friday 7:30 am - 4 pm, closed on Federal holidays. The Complex provides a wide variety of wildlife dependent public uses such as hunting, fishing, wildlife photography, environmental education, wildlife interpretation and observation. For more information about these or other national wildlife refuges, visit the national wildlife refuge web site at www.fws.gov/refuges

The satellite office for Mandalay and Bayou Teche NWRs is located at 1725 Willow Street, Franklin, LA 70538.

Public use regulations are designed to protect the visitor, wildlife populations, and habitats. All public use must comply with the regulations listed in this brochure.

The regulations within this brochure supplement the general regulations that govern hunting on National Wildlife Refuges as set forth in Title 50 Volume 6 Chapter 1 Parts 18-199 Code of Federal Regulations; 50 CFR Part 32, Parts 20, 27, and 26, and regulations governing hunting and fishing in Louisiana. All hunting is in accordance with applicable state licensing and regulations, unless otherwise stated in these refuge specific regulations.

General Refuge Regulations

At the discretion of Refuge Managers, refuges or portions of a refuge may be closed due to inclement weather, poor road conditions, safety concerns, excessive flooding, etc.

Permit Information

All hunters and anglers age 18 and over are required to possess a valid (signed) cutout located on the cover of this brochure. By possessing the attached signed cover page, users acknowledge their understanding of all refuge regulations. In addition to this brochure, hunting/fishing users must possess all applicable state licenses and a picture ID at all times while on refuge property.

Refuge Uses: General Rules

We allow wildlife-dependent uses such as, but not limited to, walking nature trails, canoeing, and bicycling on areas designated by this brochure.

Refuge Hours

Refuges are closed from legal sunset to legal sunrise, except as otherwise noted for fishing, hunting, or camping access. With the exception of legal nighttime hunting activities, refuge hunting hours are ½ hour before legal sunrise to ½ hour after legal sunset

Access

- When parking on the refuge, you must use designated parking areas (see on maps below). In areas posted as "Area Closed" and "Do not block gate," you must abide by this signage. In areas marked as "non-motorized boat launch," we prohibit the use of gas-powered motors on watercraft, but electric motors are allowed.
- Refuge areas closed to public hunting are marked with "No Hunting Zone" signs and/or shown on the refuge maps attached.

Horses/Pets/Animals

We allow dogs and other domestic pets/animals on the refuge if:

1. They do not disturb or endanger wildlife or people.
 2. Unless they are being used for hunting purposes, dogs must be on a leash.
 3. Owners/handlers of pets/animals are responsible for removal of droppings deposited in refuge public use areas such as trails, sandbars, parking areas, and boat landings.
 4. During designated seasons such as hunting migratory birds, squirrels, rabbits and raccoon, we allow dogs to locate, point, and retrieve game.
 5. We encourage the use of dogs for hunting, but we prohibit field trials and commercial/professional dog training.
- All other domestic animals are prohibited unless confined in a vehicle, boat, trailer, kennel, or other carriage.
 - Horses and mules are prohibited on refuge lands.

Vehicles

- Except on designated routes of travel, we prohibit the use of vehicles use on or across refuge lands. We prohibit parking beyond vehicle control barriers and on grass or other vegetation. We prohibit parking or operating vehicles in a

manner that obstructs or impedes any road, turn row, field access ramp, trail, fire lane, boat ramp, access gate, or other facilities, or in a manner that creates a safety hazard or endangers any person, property, or environmental feature.

- At the owner's expense, we may impound any vehicle left parked in violation.
- Vehicles may not be operated on a flooded road.
- Temporary or permanent closure of refuge areas may occur due to unforeseen circumstances that may not be included in this brochure. Please check for on-the-ground signage and/or updates at kiosks and entry points or refuge website at: <http://www.fws.gov/refuge name>

All-Terrain Vehicles (ATV), Utility Terrain Vehicles (UTV)
ATV/UTV's are prohibited on all refuges.

Boats

We allow the use of watercraft of all types and means of propulsion on all navigable waters of the refuges in accordance with State regulations subject to the following conditions:

- The refuges allow canoes, pirogues, kayaks, and watercooled inboard/outboard motors. Air boats, marsh buggies, aircraft, mud boats and air-cooled propulsion engines are prohibited. Air cooled engines, except air boats, are permitted on Mandalay NWR. In areas posted as "non-motorized boat launch," we prohibit motorized watercraft year-round except watercraft powered by electric motors or non-motorized means.
- We prohibit the mooring, beaching, or storing of watercraft (including houseboats) on the refuges. Boats must be used at least once every 24 hours. We define "being used" as a watercraft moved at least 100 feet (30 m) on the water with operator on board. We prohibit the mooring of watercraft within 200 feet (60 m) of refuge boat landings or ramps. Any watercraft moored in violation of regulations may be impounded at the owner's expense.

Fishing Regulations

- Recreational fishing, crawfishing, and or crabbing are allowed from ½ hour before sunrise until ½ hour after sunset, except where otherwise noted.
- Use of trotlines, limb lines, slat traps, gar sets, or alligator lines is prohibited on all refuges (unless otherwise specified).
- Anglers may enter the refuges from ½ hour before sunrise and must exit no later than ½ hour after sunset, unless otherwise noted.

- All fishing, crabbing, and/or crawfishing equipment must be attended at all times
- These regulations do not supersede any Federal and State requirements for boating, creel limits, and licensing.

Hunting Regulations

- The incidental take of coyote, raccoon, armadillo, opossum, and feral hogs, is allowed during any open refuge hunting season. Take must be in compliance with the regulations of those seasons. The incidental take of nutria (during waterfowl season only) is allowed with weapons and ammunition allowed during waterfowl season on the refuges.
- While hunting, all persons 15 years of age and under must be in the presence and under direct supervision of a licensed or exempt hunter at least 18 years of age in Louisiana. A licensed hunter supervising a youth as provided in this section must hold all required licenses and permits. Youths must remain within normal voice contact and direct sight of the adult who is supervising them. Adult guardians are responsible for ensuring that youth hunters do not engage in conduct that would constitute a violation of refuge regulations.
- One adult may only supervise up to two youths during upland game or migratory bird hunts, but is only allowed to supervise one youth during big game hunts.
- Refuge areas closed to public hunting are marked with "No Hunting Zone" signs and/or shown on the map attached to this brochure.
- Hunters may not enter the refuge before 4 am and must exit no later than two hours after legal sunset for that day.
- Waterfowl hunting must cease by 2 pm when open and all decoys and blinds must be removed by 2 pm each day.

Hunter Orange/Blaze Pink

- All hunters (including archers and small game hunters) and trappers, EXCEPT waterfowl hunters and mourning dove hunters must display 400 square inches of "Hunter Orange" or "Blaze Pink" and wear a "Hunter Orange" or "Blaze Pink" hat or cap during open firearms seasons for deer.
- Deer hunters hunting from concealed blinds must display a minimum of 400 square inches of "Hunter Orange" or "Blaze Pink" above or around their blinds which is visible from 360 degrees.
- All hunters, including archers (while on the ground), except waterfowl hunters (where allowed) must abide by State WMA

hunter orange or blaze pink regulations during any open deer firearm, and primitive firearm season.

- During any special dog season for rabbit, squirrel, and hog (where allowed), all hunters including archers (while on the ground), except waterfowl hunters must wear a hunter orange or blaze pink cap or hat during that dog season.

Harvest Reporting

State hunting reporting requirement applies to all hunting on the refuges.

Restricted and/or Closed Areas

We prohibit hunting or discharge of firearms within 500 feet of any residence or oil and gas infrastructure, or within 200 feet of any road, railroad, levee, water control structure, designated public use trail, building, designated camping area, designated parking area, or other designated public facility within or adjacent to refuge boundaries.

Firearms and Ammunition

- Persons possessing, transporting or carrying firearms on national wildlife refuges must comply with all provisions of state and local laws. Persons may only use (discharge) firearms in accordance with refuge regulations (50CFR 27.42 and specific regulations in 50CFR Part 32).
- Possession of buckshot, slugs, shotgun lead shot, or any shotgun ammunition other than approved non-toxic shot, or rifle ammunition larger than .22 caliber is prohibited on the refuges, except during deer gun and primitive weapon firearm seasons (where allowed). See specific refuge regulations.
- We only allow non-toxic shot #4 or smaller, rimfire .22 cal or smaller, or air rifles to take squirrel or rabbit. Only non-toxic shot #4 or smaller is allowed for quail or woodcock

Bag Limits

State season, bag and possession limits, and methods of take apply unless otherwise stated. Consult current state regulations for details.

Tree Stands

- Hunting from a permanent tree stand, or from a tree in which a metal object (such as nails, spikes, screws) has been driven is prohibited.
- Valid permit holders are allowed to have only one portable stand on each refuge.
- Hunters may erect temporary deer stands within 48 hours prior to the start of deer archery season. Hunters must

remove all deer stands within 48 hours after the last deer season closes on each refuge.

- Deer stands must have owner's state license/sportsperson's identification number clearly printed on the stand. All untagged stands are subject to seizure. Stands left on the refuge do not reserve hunting locations.

Migratory Birds

- During the State Season, waterfowl and migratory bird hunting is allowed on Wednesday, Thursday, Saturday and Sunday from ½ hour before sunrise until 2 pm in designated areas of Bayou Sauvage Urban and Mandalay NWRs.
- Bayou Teche's waterfowl and migratory hunters may hunt until 2 pm on all days of the week (see refuge specific regulations).
- Only temporary blinds are allowed.
- On refuges where waterfowl hunting is allowed, decoys, blinds and spent shells must be removed from the hunting area by 2 pm each day.

Small Game

All hunters using shotguns for small game must use approved non-toxic shot size #4 or smaller. Small game may be hunted with archery equipment, and .17 and .22 caliber rim-fire rifles and air rifles.

Other Prohibited Activities

- All commercial activities, including guiding, outfitting, lodging and club membership or participating in a paid guided trip, including hunting, fishing, or shell fishing.
- Searching for or removing any object of archeological or historical significance, including arrowheads, pottery, pottery shard, or other artifacts.
- Trapping without a special use permit.
- The use of artificial light, including vehicles headlights, to locate or take any animal.
- Use or possession of any drugging device, or deploying any such drug for hunting.
- The possession or use of any flagging or marking devices such as paint, or other substances except reflective tacks.
- Use or possession of alcohol while hunting.
- Fires.
- Camping.
- Littering.
- Organized deer drives.
- The use of deer decoys.
- The possession or distribution of bait while on the refuge and hunting with the aid of bait, including any grain, salt, minerals, or any non-naturally-occurring attractant.
- Use of drones or unmanned aerial vehicles (UAV).
- Overnight parking except where otherwise noted.
- Target shooting.
- Any form of fish snagging.
- Field dressing game or leaving remains within 150 feet of any road, trail or parking lot.
- Leaving personal property, except portable deer stands, on a refuge.
- Tampering with any petroleum facility or equipment.
- Remote cameras, including trail cameras.
- Feeding wildlife.
- Take of turtles, snakes, frogs, or other wildlife not listed in this brochure.
- We prohibit the cutting, removal, or damage of any plant or animal specimens or other natural objects from the refuge without a Special Use Permit. We prohibit attaching nails,

screws, spikes, or other hardware to any tree that pierces the bark.

Louisiana Black Bear

Be aware that the Louisiana black bear was recently delisted under provisions of the Endangered Species Act of 1973. It remains unlawful for anyone to take, harass, disturb, etc. any Louisiana black bear.

Signs and Boundaries

Applies to the area located behind the sign.

Please respect the following signs:

- No Vehicles: All traffic prohibited.
- Environmental Education Zone: All hunting prohibited.
- Area Behind This Sign Closed: No public entry. Do not trespass behind this sign unless for emergency.
- Parking Area: Designated areas to park while hunting, fishing or other wildlife oriented public use.
- National Wildlife Refuge Unauthorized Entry Prohibited.
- Refuge Boundary: Entry permitted in accordance with refuge regulations.
- No Hunting Zone: Hunting prohibited.
- No Fishing or Crabbing From Dock: The dock is for boat off loading and boarding only.
- You Are Within The Boundary of a National Wildlife Refuge.

Signs Protect Visitors and Resources



This sign delineates the refuge boundary. Entry is permitted only for authorized uses (hunting, fishing, sightseeing, etc.) in accordance with refuge regulations.



This area is closed to all entry. No hunting, fishing or sightseeing is permitted. No roads or trails are open to the public.



This area is closed to all hunting.



No private vehicles or ATV/UTVs pass this sign.



You Are Within The Boundary of a National Wildlife Refuge.

Bayou Sauvage Urban NWR

Bayou Sauvage Urban National Wildlife Refuge was established in 1990 and is completely within the city limits of New Orleans (Orleans Parish). The refuge is approximately 27,000 acres, making it the second largest urban refuge in the United States. The fresh marsh and tidal estuaries provide habitat for fish, wildlife and plants that are part of the last remaining marsh areas between Lakes Borgne and Pontchartrain.

Public use opportunities include bird watching, hiking, wildlife photography, fishing, paddling, environmental education and youth wildlife hunting. Most of the refuge is located inside hurricane protection levees that were built to protect New Orleans from storm surge flooding. Because the levees disrupt the natural water flow, a network of pumps and water control structures are used to manage impounded water levels. The refuge supports over 340 species of birds and other wildlife that use the refuge.

For more information, visit the refuge website at <https://www.fws.gov/refuge/bayou-sauvage-urban>

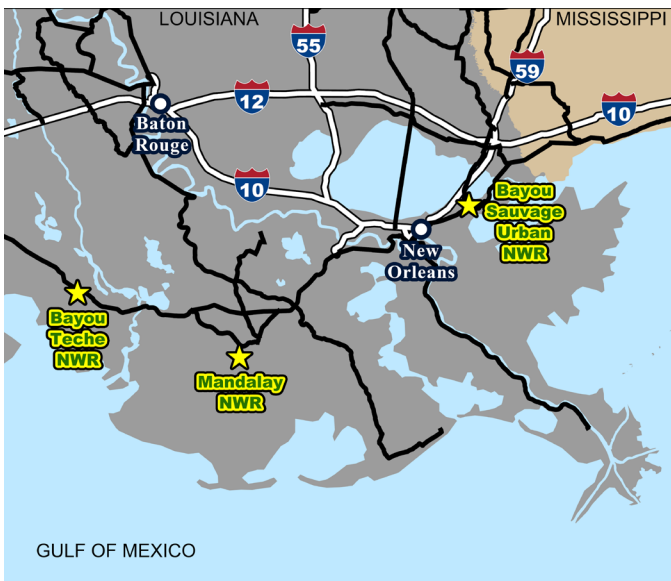
Refuge Specific Regulations

Access

All portions of the refuge outside the Hurricane Protection Levee, except the Intracoastal Waterway, are closed to public entry other than waterfowl hunting until 2 pm from November 1 – January 31 and during the state teal season.

Hunting

- All hunts are considered youth hunts. Youth age of 15 or younger must be supervised by an adult. The youth must be capable of and must actively participate in such hunt by the possession and/or firing of a legal weapon during the hunt for the expressed purpose of harvesting game.
- Supervising adults accompanying youth on refuge hunts may participate in hunting, but may not harvest more than their own daily bag limit.
- Youth waterfowl, goose, coot, gallinule, rail, snipe and dove hunting is permitted until 2 pm on Wednesday, Thursday, Saturday, and Sunday, during the State waterfowl hunting season, including early teal season, and youth waterfowl hunt season.
- Specific State regulations apply during the state youth hunting days (i.e., adults may not hunt).
- Air-thrust boats, aircraft, mud boats, and air-cooled propulsion engines are prohibited, except hunters may use



air-cooled propulsion engines to traverse the refuge through the Intracoastal Waterway and the Irish Bayou Straight Canal.

- See chart for specific season dates and regulations.

Fishing

- Finfishing and shell fishing are permitted year-round inside the Hurricane Protection Levee and only after 2 pm outside the Hurricane Protection Levee, except the Intracoastal Waterway, from November 1 through January 31, and during the state teal season.
- When fishing is allowed, we only allow sport finfishing with a hand-held rod and reel or hand-held rod and line. Bait shrimp may be taken with cast nets. Crawfish can be taken (up to 100 pounds per person/per day) with wire nets up to 20 inches in diameter. Recreational crabbing is permitted with a limit of 12 dozen per person/per day. Fishing, crabbing and crawfishing equipment must be attended at all times.
- Only outboard motors 25 horsepower or less are permitted in waterways inside the Hurricane Protection Levees. There is no size restriction on outboard motors on waterways outside the Hurricane Protection Levees.

Bayou Teche NWR

Bayou Teche National Wildlife Refuge, was established in 2001 and is located in St. Mary Parish, Louisiana. The 12,000-acre refuge consists of six separate units, ranging in size from 3,724 acres to 80 acres and is composed of bottomland hardwoods laced with bayous and canals. The refuge consists of lands that are important to the coastal subpopulation of the Louisiana black bear with a primary mission to preserve and manage habitat for the Louisiana black bear. It also provides excellent habitat for wading birds, neotropical songbirds, waterfowl, reptiles and amphibians.

Public use opportunities include bird watching, hiking, wildlife photography, fishing, paddling, environmental education, and hunting.

For more information, visit the refuge website at <https://www.fws.gov/refuge/bayou-teche>

Refuge Specific Regulations

Vehicles

- Vehicles are limited to a maximum of 25 mph on refuge roads.

Boating

- The Franklin Unit canals (Black Bear, Wood Duck, and Alligator) will only be open to motorized boats between April

15 - August 31. The unit is open to non-motorized boats all year.

Hiking

- Garden City and North Bend East and West Units: Hiking trails are only open from February 1-September 30.
- Garden City Unit: The Palmetto Trail is minimally maintained and meanders through cypress-tupelo swamp. Waterproof footwear is recommended when wet. The Garden City Boardwalk is open year round and is good for viewing migratory birds.
- Centerville Unit: Hiking trails are only open from February 16-September 30. Trails are established on old dikes created when sugar cane drainage ditches were dug and are minimally maintained, but provide excellent bird watching in a cypress-tupelo swamp.
- Franklin Trail: Open all year.

Hunting

- Shooting across an agricultural field or canal is prohibited.
- See chart for specific season dates and regulations.
- Waterfowl hunting is closed during refuge gun hunts for deer.
- Scoter Pond is closed to waterfowl hunting.

Mandalay NWR

Mandalay National Wildlife Refuge was established in 1996 and is located in Terrebonne Parish, Louisiana. The 4,416 acre refuge is composed of freshwater marsh and cypress-tupelo swamp. The refuge provides excellent habitat for waterfowl, wading birds, and neotropical songbirds. Most of the refuge access is by boat only and foot travel is extremely difficult due to the soft marsh environment. The Mandalay Refuge Nature Trail provides a glimpse into three different habitat types within a 45-minute hike.

Public use opportunities include bird watching, hiking, wildlife photography, fishing, environmental education, and youth wildlife hunting.

For more information, visit the refuge website at <https://www.fws.gov/refuge/Mandalay/>

Refuge Specific Regulations

- Access to the Mandalay Nature Trail parking area is by vehicle only. All visitors to the nature trail must remain in their vehicles until arriving at the designated parking area.
- Motorized vehicles are prohibited on the nature trail.

Hunting

- All migratory bird and small game hunts are considered youth hunts. Youth age of 15 or younger must be supervised by an adult. The youth must be capable of and must actively participate in such hunt by the possession and/or firing of a legal weapon during the hunt for the express purpose of harvesting game.
- Supervising adult accompanying youth on refuge hunts may participate by hunting their own daily bag limit.
- See chart for specific season dates and regulations.
- Only the Hanson Unit is open to youth hunting of migratory bird, waterfowl, and goose and only on Wednesday, Thursday, Saturday, or Sunday until 2 pm.
- The Hanson Unit is closed to youth upland game hunting prior to 2 pm during Wednesday, Thursday, Saturday and Sunday of the waterfowl hunt season.

Fishing

During state waterfowl season, we only allow recreational fishing on Wednesday, Thursday, Saturday and Sunday from 2 pm until ½ hour after legal sunset in Hatch Lake and the Hanson Unit.

Species	Bayou Sauvage Urban	Bayou Teche	Mandalay
Youth – Waterfowl	State Season until 2 pm (Supervising adult cannot hunt)	State Season until 2 pm	Hanson Unit State Season until 2 pm (Supervising adult cannot hunt)
Honorably discharged veterans - Waterfowl	Closed	State Season until 2 pm	Closed
Waterfowl, including Teal, Coots, and Geese	Youth only on Wed., Thu., Sat., and Sun. of State Seasons, including the light goose conservation season, until 2 pm. (Supervising adult may hunt)	State Seasons, including the light goose conservation season, until 2 pm. Closed during refuge deer gun hunts.	On the Hanson Unit only: Youth only on Wed., Thu., Sat., and Sun. of State Seasons until 2 pm, including the light goose conservation season. (Supervising adult may hunt.)
Deer – Primitive Firearm/Primitive Weapon	Closed	Closed	Closed
Archery	State Season. No dogs. Youth only. (Supervising adult may hunt)	State Season (Closed during refuge deer gun hunts) No dogs.	State Season, except closed on the Hanson Unit during refuge waterfowl season (before 2 pm on Wed., Thu., Sat. and Sun.) No dogs. Either sex, unless a Bucks Only firearms season is in progress. One deer per day. (Supervising adult may hunt.)
Youth – Deer Gun	Closed	Last weekend in Oct. not including Friday. Either sex. One deer per day. No dogs.	Closed
Honorably discharged veterans - Deer gun	Closed	Closed	Closed
Deer-Gun	Closed	Last Fri., Sat., and Sun. in Nov. One deer per day. No dogs.	Closed
Squirrel	Closed	State Season until close of state waterfowl season (State zones vary by unit), including spring squirrel season. Closed during refuge gun deer hunts. Dogs prohibited.	Youth only during State Season, including spring squirrel season. Hunters must possess non-toxic shot size 4 or smaller or .22 caliber rimfire rifles or smaller. Air rifles allowed. In the Hanson unit, youth squirrel hunting is prohibited prior to 2 pm on Wed., Thu., Sat., or Sun. during the waterfowl seasons. Dogs prohibited. (Supervising adult may hunt.)

Species	Bayou Sauvage Urban	Bayou Teche	Mandalay
Rabbit without Dogs	State Season outside hurricane protection levee. Youth only. (Supervising adult may hunt.)	State Season until close of state waterfowl season, including spring squirrel season. (State zones vary by unit). Closed during refuge gun deer hunts.	Youth only during State Season. Hunters must possess non-toxic shot size 4 or smaller or .22 caliber rimfire rifles or smaller. Air rifles allowed. In the Hanson unit, youth rabbit hunting is prohibited prior to 2 pm on Wed., Thu., Sat., or Sun. during the waterfowl seasons. (Supervising adult may hunt.)
Rabbit with Dogs	State Season outside hurricane Protection levee. Youth only (Supervising adult may hunt)	Closed	Closed
Turkey	Closed	Closed	Closed
Gallinule, Rail, and Snipe	Wed., Thu., Sat., and Sun. of State Season until 2 pm. Only non-toxic shot size #4 or smaller allowed. Youth only. (Supervising adult may hunt)	State Season until 2 pm. Only non-toxic shot size #4 or smaller allowed.	Only the Hanson Unit is open only to youth on Wed., Thu., Sat., and Sun. of State Seasons until 2 pm. (Supervising adult may hunt)
Frog	Closed	Closed	Closed
Woodcock	Closed	State Season	Closed
Quail	Closed	Closed	Closed
Dove	Wed., Thu., Sat., and Sun. of State Season until 2 pm. Only non-toxic shot size #4 or smaller allowed. Youth only. (Supervising adult may hunt)	State Season. (State zones vary by unit.)	Only the Hanson Unit is open and only to youth dove hunting on Wed., Thu., Sat., and Sun. of State Seasons until 2 pm. (Supervising adult may hunt)
Nutria	Incidental to refuge waterfowl season with weapons and ammunition approved for that season.	Incidental to refuge waterfowl season with weapons and ammunition approved for that season.	Incidental to refuge waterfowl season with weapons and ammunition approved for that season.
Beaver	Closed	Closed	Closed

Species	Bayou Sauvage Urban	Bayou Teche	Mandalay
Hog-Dog only	Closed	Closed	Closed
Raccoon Opossum Coyote, Feral Hog, Armadillo	Incidental to any refuge open season with weapons and ammunition approved for that season.	Incidental to any refuge open season with weapons and ammunition approved for that season.	Incidental to any refuge open season with weapons and ammunition approved for that season.



U.S. Fish & Wildlife Service

Bayou Sauvage Urban National Wildlife Refuge

Orleans Parish, Louisiana

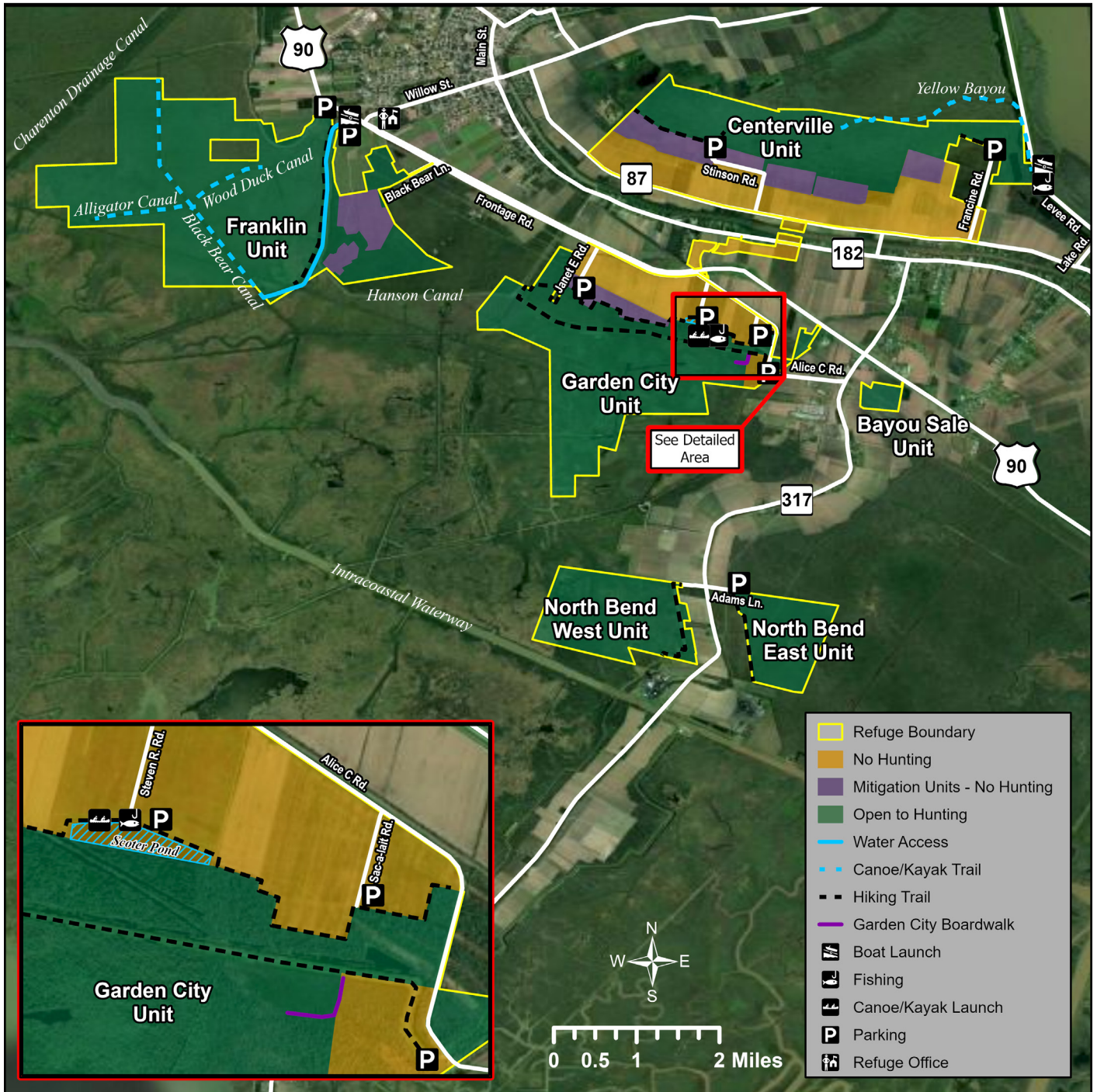




U.S. Fish & Wildlife Service

Bayou Teche National Wildlife Refuge

St. Mary Parish, Louisiana

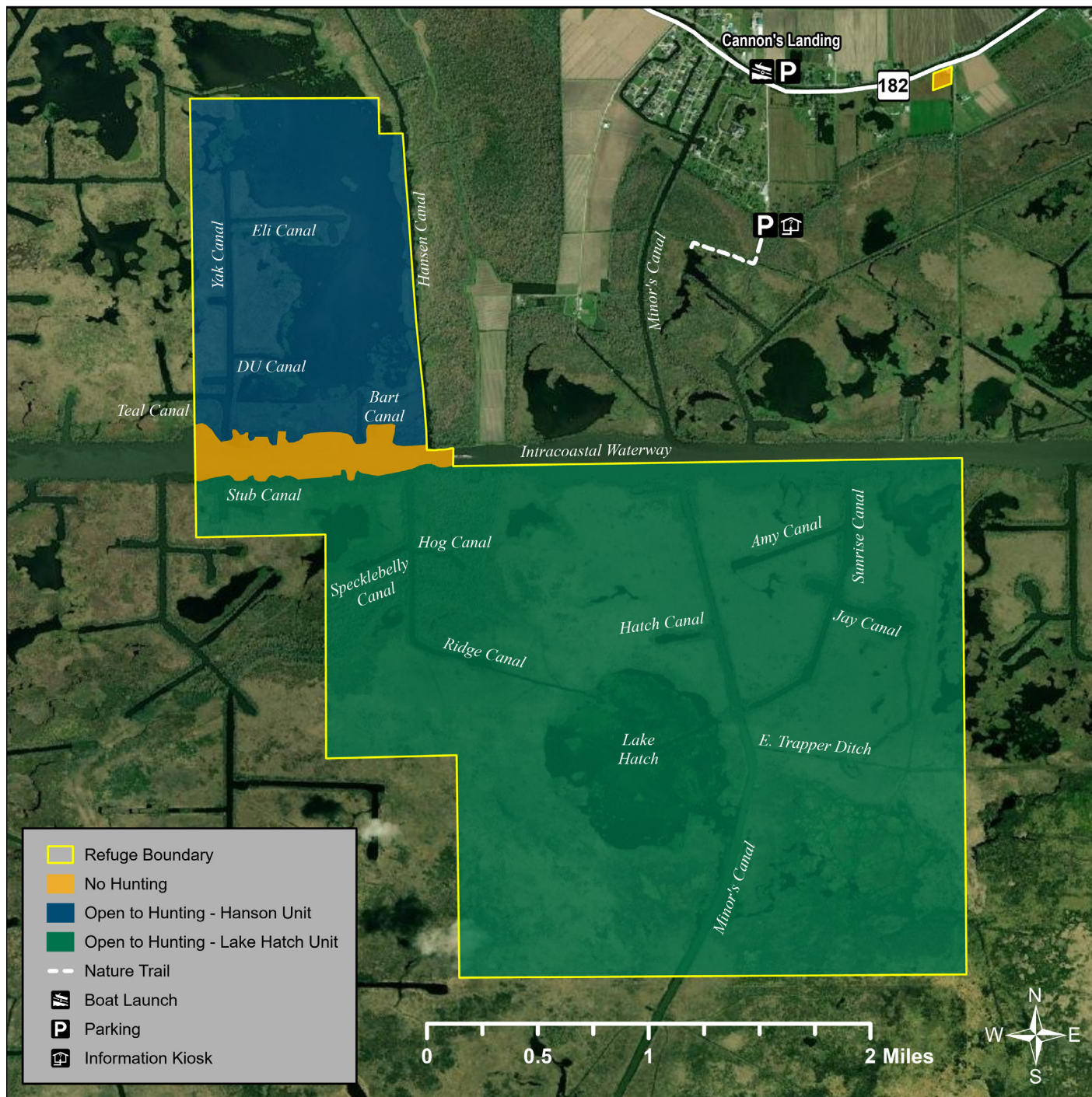




U.S. Fish & Wildlife Service

Mandalay National Wildlife Refuge

Terrebonne Parish, Louisiana



**U.S. Fish & Wildlife Service
Bayou Sauvage Urban Complex
61389 Highway 434
Lacombe, LA 70445**

**Phone: 985-882-2000 Headquarters Office
<https://www.fws.gov/refuge/bayou-sauvage-urban>**

August 2025

