

## Block Island National Wildlife Refuge (*NWR*) Hunting and Fishing Program 2024-2025



The U.S. Fish and Wildlife Service will provide hunting opportunities at Block Island National Wildlife Refuge (refuge) during the 2024-25 refuge hunting season. White-tailed deer hunting opportunities are available at Beane Point, Sandy Point, Grove Point, and Wash Pond hunting units, with some season and weapon restrictions (Figure 1). Wash Pond Unit is open to migratory bird hunting (ducks, coot, and merganser). State safety regulations apply. Hunting is not allowed in safety zones. Saltwater fishing opportunities: anglers may saltwater fish from refuge shorelines in accordance with State fishing regulations.

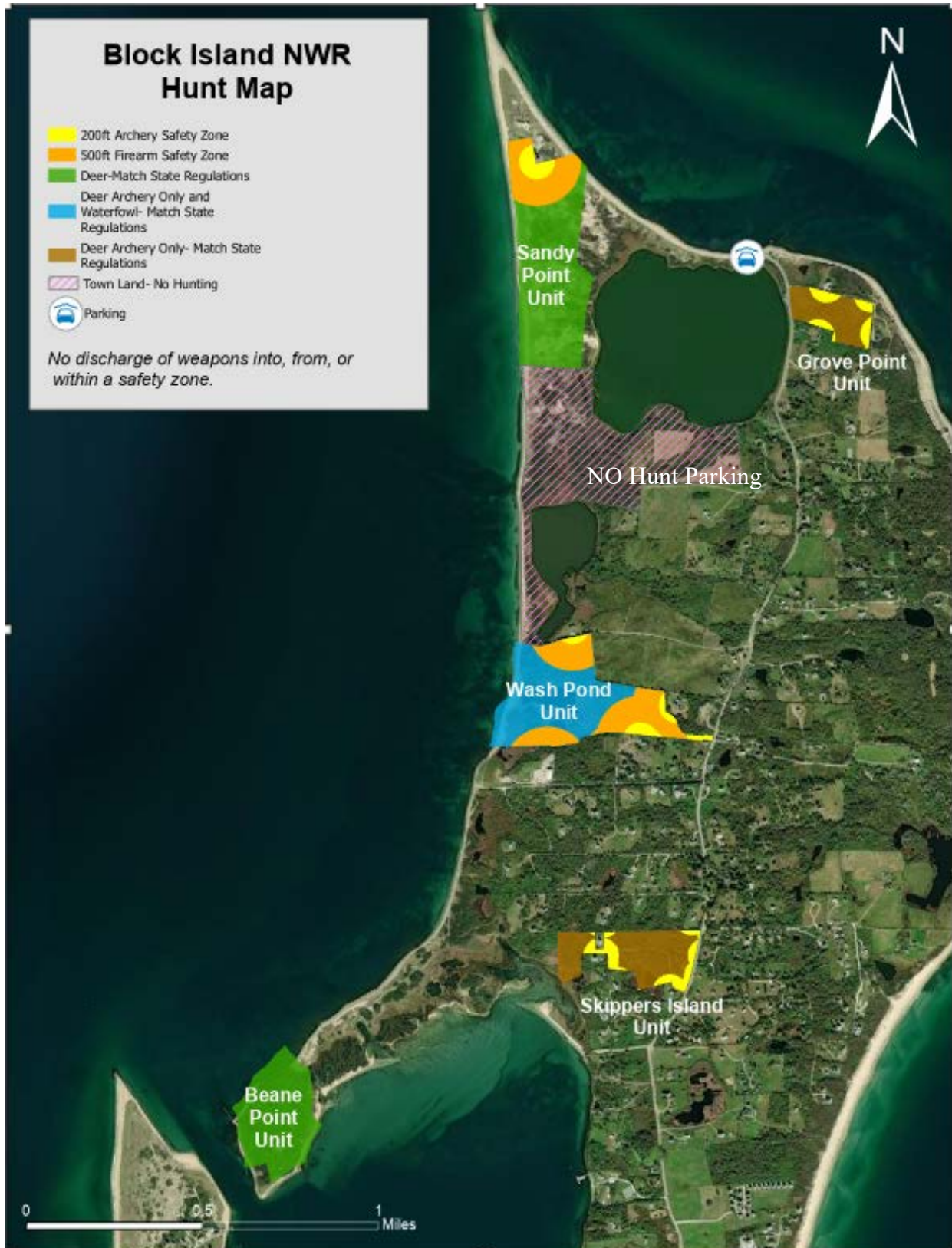
### 2024-2025 Program Details:

- Beane Point and Sandy Point Units match State regulations for hunting deer (October – February), which reflects seasons established by the Town of New Shoreham, and prohibits hunting on weekends.
- Grove Point, Wash Pond, and Skippers Island Units are open for archery only deer hunting, matching the State archery season (October – February), which reflects seasons established by the Town of New Shoreham, and prohibits hunting on weekends. **Archery proficiency certification is required.**
- Wash Pond Unit is open during the State migratory bird hunting season for ducks, coot, and mergansers (October – January).
- Hunters must download, sign, and carry a refuge hunting brochure for each season to serve as written permission to access refuge units.
- Hunters are encouraged to check in with the Town of New Shoreham police department prior to hunting.

### Safety measures employed:

- All hunters must have a valid State hunting license, which requires a [hunter education course](#);
- All hunters in the deer archery season, must have an archery proficiency certification;
- No discharge of archery equipment within 200 feet of a dwelling;
- No discharge of firearms within 500 feet of a dwelling;
- No discharge of a weapon from or across a road;
- State seasons reflect Town of New Shoreham limits on weekend hunting;
- Hunters are encouraged to check-in with the Town of New Shoreham Police Department before hunting;
- Hunters will be provided maps of safety setbacks and hunt unit boundaries to aid in navigation;
- The public will be alerted to annual hunting seasons through news releases and website/ Facebook postings;
- Refuge visitors are recommended to wear blaze orange clothing during hunting season;
- The hunting and fishing program will be monitored and have adjustments made as deemed necessary.

**Figure 1.** Block Island National Wildlife Refuge Hunt Map. Map was created using GIS mapping for informational use, not for legal purposes.



Please call the refuge at 401-364-9124 if you have any questions.

