

Conboy Lake National Wildlife Refuge

Hunting Regulations



Hunting is permitted in accordance with state regulations (see wdfw.wa.gov/hunting/regulations/) and special refuge regulations.

Open to Hunting – Goose, duck, coot, and snipe.

Closed to Hunting – All other species of wildlife not listed are protected. Examples include doves, elk, deer, bear, cougar, snakes, raven, crow, coyote, porcupine, turkey, squirrels, and rabbits.

Days – The refuge is open to the hunting of the above listed species 7 days a week in accordance with state regulations.

Hours – The refuge is open from 1-1/2 hours before legal hunting time to 1-1/2 hours after legal hunting time.

General Public Entry – For non-hunters, the open areas of the refuge are available to the public 7 days a week from sunrise to sunset.

Firearms & Ammunition – Only archery, shotguns, and muzzleloaders are permitted. Only federally approved non-toxic shot may be used or possessed for shotguns. Firearms may only be discharged in accordance with FWS regulations (50 CFR 27.42) and refuge-specific regulations (50 CFR Part 32).

Blinds – Only portable or temporary blinds constructed of non-living natural materials are permitted. Digging or using pit blinds is not permitted.

Boats – Non-motorized boats or floating devices may be used during the hunting season only to set decoys and retrieve downed birds. Motorized boats are prohibited.

Vehicle Travel – Motorized vehicles and bicycles are restricted to designated motorized routes of travel and parking areas.

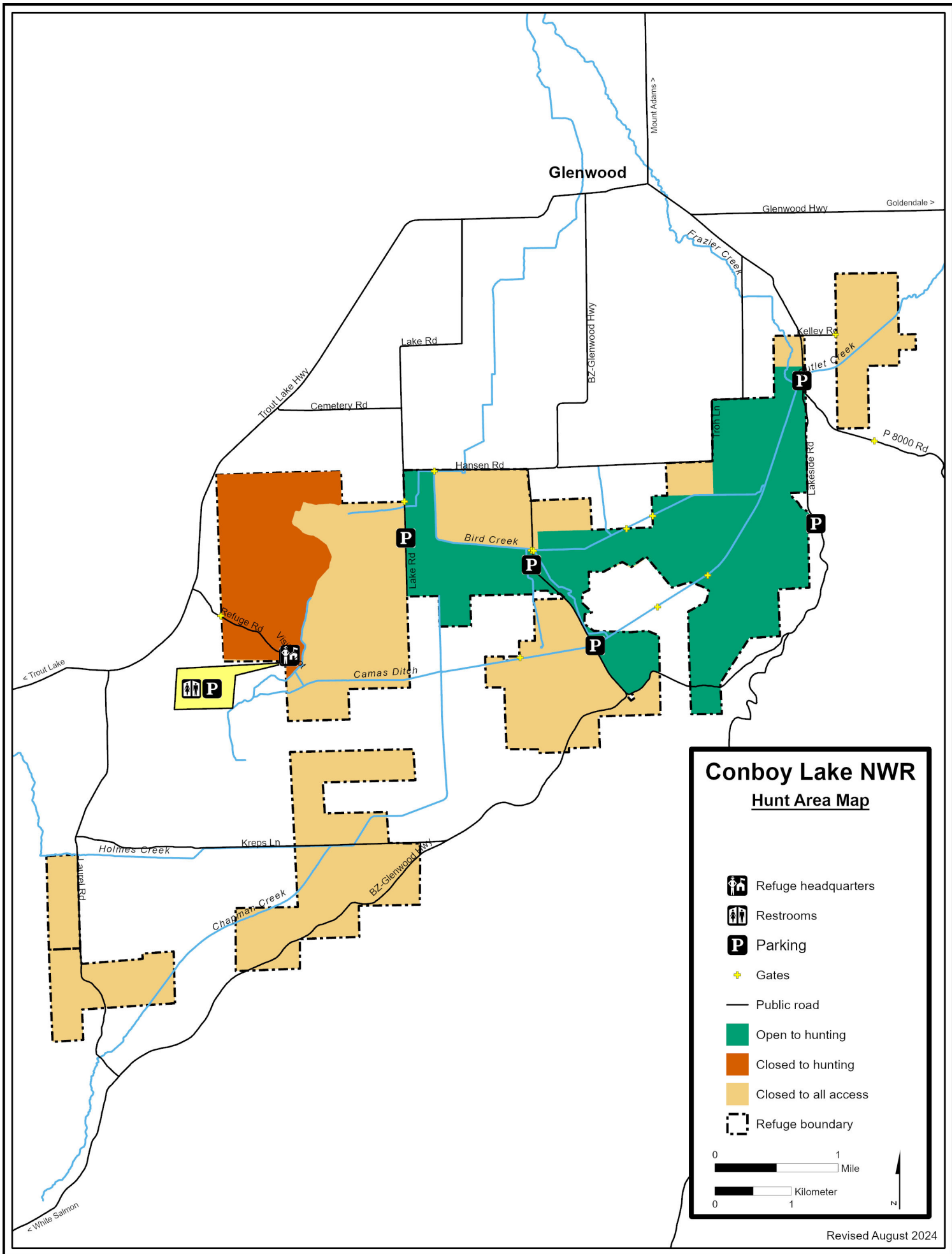
Dogs – Dogs must be kept on leashes, except during the lawful pursuit of game during legal seasons.

Selected Prohibited Activities










- The use or possession of alcoholic beverages while hunting
- Baiting of any wildlife
- Fires
- Horseback riding, except on roads open to motor vehicles
- Overnight camping
- Overnight parking
- Littering (including empty shotgun hulls)
- Use of ATVs and other off-road vehicles
- Commercial guiding for hunting
- Abandoning, discarding, or leaving personal property unattended
- Target shooting
- Discharging any firearm within 1/4 mile of any maintained building
- Collecting of plants, animals, minerals, antlers, or other materials
- Trapping or netting
- Falconry

Contact Information

Conboy Lake National Wildlife Refuge
100 Wildlife Refuge Road
Post Office Box 5
Glenwood, WA 98619
509/364-3667
www.fws.gov/refuge/conboy_lake/



Conboy Lake NWR Hunt Area Map

-  Refuge headquarters
-  Restrooms
-  Parking
-  Gates
-  Public road
-  Open to hunting
-  Closed to hunting
-  Closed to all access
-  Refuge boundary

