

Complete at least **4 activity pages!** When you're finished, bring your booklet to the Visitor Center Information Desk for your official Junior Ranger badge!

Junior Ranger Pledge

As a Junior Ranger, I promise to learn as much as I can about nature and the National Wildlife Refuge System. I promise to protect and preserve wildlife and plants, and to help keep the water, land, and air clean. I will share what I have learned with my friends and family.

Junior Ranger Signature

Refuge Staff/Volunteer Signature



Rocky Mountain Arsenal National Wildlife Refuge
6550 Gateway Road - HQ
Commerce City, CO 80022-1748
(303) 289-0930
<http://www.fws.gov/refuge/rocky-mountain-arsenal>

Illustrations by Bri Spitz
Photographs by RMANWR Staff

Exhibit Hall Scavenger Hunt

- Find the prairie dog display in the Visitor Center lobby.

How many prairie dogs do you see? _____

- Can you find the black-footed ferret?

In the blue exhibits, find the coyote and deer jawbone.
Notice the differences in teeth. What do mule deer eat?

- Meat
- Leafy plants

In the orange exhibits, how did kids get to school?

- Horse
- Car

Search and find...

- the old radio
- the old telephone
- the bald eagle and red-tailed hawk (look up!)

- Bonus!** Use the old telephone to dial your phone number!



Beyond the Refuge

Caring for wildlife is a team effort! Use the space below to draw or write what YOU can do to help wildlife here at the refuge or at home!



Word Scramble

Many different animals call the Refuge home!
Unscramble their names below, then use the numbered
letters to find one more animal here at the Refuge!



DEGABR

1 _____



BIABRT

2 _____



NSKAE

3 _____



TOYCEO

4 _____



UKSNK

5 _____



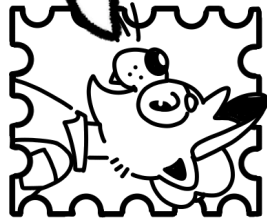
1 2 3 4 5

Fun fact! Did you know that the bison's scientific name is *Bison bison*?

Answers: badger, rabbit, snake, coyote, skunk, bison

Draw your favorite part here!

Postcards are a great way to tell someone about your trip! Use the space below to write about what you did at the refuge.



No need to wait for snail mail! Take a picture and send it with a text or email!

Ferret It Out

Visit the black-footed ferret exhibit just beyond the back patio of the Visitor Center. Signs will guide you to the building. Be sure to go inside!

The tan-colored fur of black-footed ferrets acts as **camouflage**, which helps them... (circle one)

Hide from predators See in the dark

Ferrets are **nocturnal**, meaning they are active at night. Which senses would be the most important?

Sight Hearing Touch Smell Taste

Black-footed ferrets eat _____

How many can they eat in a year? _____

Ferrets are... (circle one)

Herbivores (eat plants)

Carnivores (eat meat)

Omnivores (eat plants and meat)

Did you know?

Black-footed ferrets were thought to be extinct until 1981. Since then, they've been making a comeback!



Visitor Center Back Patio

Find the animal shapes on the Visitor Center's Back Patio.

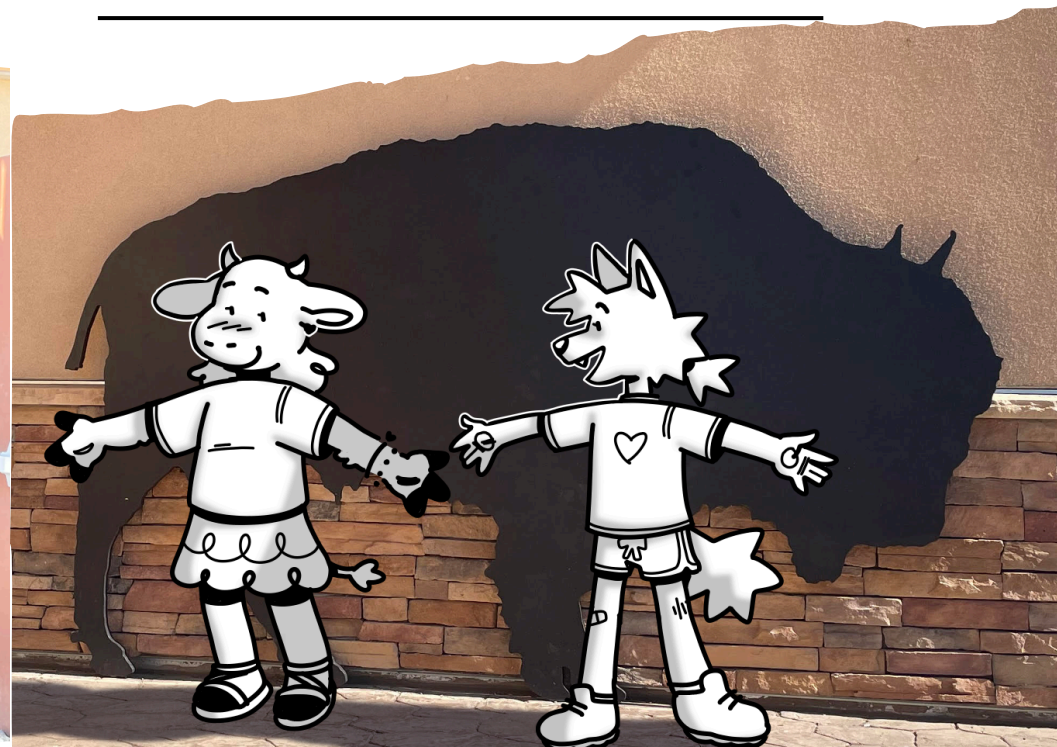
Measure up! What animal is your size?

How many of you would it take to be a bison? _____

How many of your hands would it take to make a bald eagle wingspan? _____

Try and jump the length of the mallard duck wingspan!

If you could be one of these animals, which one would it be?

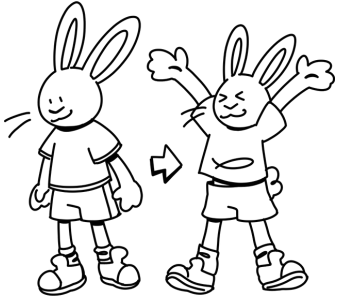


Wildland Firefighter Fitness

Wildland firefighters help prevent and put out wildfires.

They must carry a lot of tools and heavy gear. They have to take a fitness test each year to make sure they are in shape to safely fight fires.

Test **YOUR** fitness by...



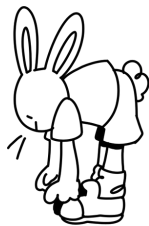
Doing 10 Jumping Jacks



Balancing on one foot for 5 seconds



Running in place for 10 seconds



Touching your toes

Check this box
 after you've
completed
your test!

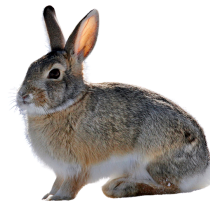


Fun fact!

Wildland firefighters carry up to **150 pound** backpacks when fighting wild fires. That's like carrying **15 bowling balls!**

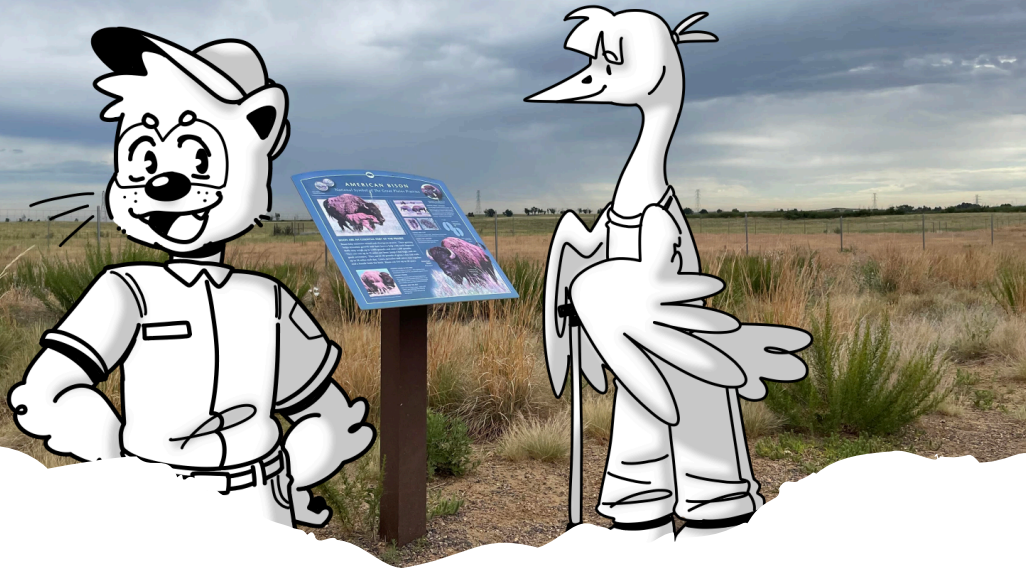
Food Webs

Food webs are used to show how energy flows through an ecosystem. In other words, it shows **what animals eat**. Draw lines from animals to what they eat to make your own food web!



Hint: Just like how you eat a lot of different foods, some animals eat more than one thing, too!

Imaginary Animal Adaptations Drawing



Bison Hike

Hike the Discovery Trail off the Visitor Center back patio.

Ahead on the other side of the fence is one of the refuge's bison pastures. Spot the bison sign or use the banner in the exhibit hall to answer these questions!

Safety first! How much space should you keep between yourself and bison? _____

Male bison (bulls) weigh _____ pounds.

Female bison (cows) weigh _____ pounds.

Bison can run up to _____ miles per hour.

True or false: Bison can jump. (circle one)

True

False

Bison like to wallow in the _____

How wide are bison tracks? _____

Animal Name:

Where does it live?

What does it eat?

How does it move?

Animal Adaptations

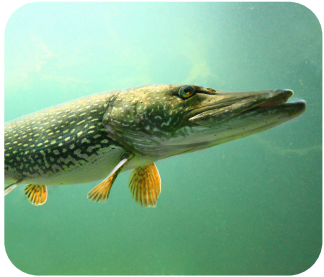
Adaptations are any **behavioral** or **physical characteristics** of an animal that help it survive in its environment.



Whiskers help an animal feel its way through tight spots like burrows.



Sharp teeth help an animal eat meat.



Fins help an animal move through water.



Wings help an animal fly and travel from place to place.



And that's just to name a few! Now that you know more about adaptations, use the next page to draw your own imaginary refuge animal!

Bison Observation

Take the wildlife drive or hike the Discovery Trail to view bison. When you find the herd, complete these field notes.



Date _____ Time _____

Location _____

How many bison do you see? _____

Male bison (bulls) are very large while females (cows) are smaller. See if you can spot the difference and count the number of...

Bulls _____ Cows _____ Calves _____

What are the bison doing? (circle one)

Resting Eating Drinking Walking

Write down the names of other animals you see in the bison pasture. Make tally marks next to each animal to record how many you see.



I Spy...

Find something that is...



- Made by an animal
- Flying
- Made by humans
- Eating grass
- As tall as you
- As long as your shadow
- Small
- Soft
- Round
- Smooth
- Food for an animal
- Shade/shelter for an animal
- Bigger than you

How many did you find?



If you found **4**, you're a **prairie dog!** Great job!



If you found **7**, you're a **bison!** Way to go!



If you found **all 13**, you're a **black-footed ferret!** Awesome!

Animal Tracks

Draw a line matching the animal to its tracks!

