

Catahoula

National Wildlife Refuge Hunting and Fishing Regulations 2024–2025



Welcome

Catahoula National Wildlife Refuge was established on October 28, 1958 and now encompasses a total of 25,242 acres. The 6,671 acre Headquarters Unit borders 9 miles of Catahoula Lake (Basin). The 18,571 acre Bushley Bayou Unit located 8 miles west of Jonesville, was established May 16, 2001. The Refuge is part of the Central Louisiana Refuges Complex administered out of the Grand Cote NWR headquarters office located at 401 Island Road, Marksville, LA 71351.

Catahoula National Wildlife Refuge
P.O. Box 120 Rhinehart, LA 71363
210 Catahoula NWR Road, Jonesville, La 71343
<http://www.fws.gov/refuge/catahoula>

Safety

Hunter Orange or Blaze Pink is required during the refuge primitive and modern firearms deer hunts. Four hundred (400) square inches of Hunter Orange or Blaze Pink must be displayed on the outermost layer of clothing on the chest, back, and a cap of unbroken orange or pink must be displayed at all times during these hunts, whether on the ground or on a stand. Hunters hunting from ground blinds must display 400 square inches of orange or pink above or around the blind that is visible for 360 degrees. Hunters participating in dog season for rabbits are required to wear Hunters Orange hat. All persons afield during hunting season are encouraged to display Hunters Orange.

Firearms

Persons possessing, transporting, or carrying firearms on National Wildlife Refuge System lands must comply with all provisions of State and local law. Persons may only use (discharge) firearms in accordance with refuge regulations (50 CFR 27.42 and specific refuge regulations in 50 CFR Part 32).

Only shotgun shells with approved non-toxic shot, .177 and .22 caliber rimfire ammunition may be used or possessed while hunting small game. The possession

of slugs and or rifle ammunition larger than .22 caliber rimfire is permitted only during refuge deer firearms hunts. The possession of buckshot is prohibited.

Vehicles

Licensed motor vehicles are permitted only on public use roads as shown on the map. Vehicle speed limits shall not exceed 25 mph unless otherwise legally posted. ATVs are restricted to designated trails only.

ATVs will not exceed the following:

- Weight - 750 lbs.
- Length - 85"
- Width - 48"

Tires on ATVs are restricted to those no larger than 28x12 with maximum lug height of 1" and maximum allowable pressure of 7 p.s.i. as indicated by the manufacturer. ATVs shall not exceed 25 mph when operated on the refuge.

Boats

Non-motorized and boats with motors of 10hp or less are allowed on Headquarters Unit waters March 1-October 31. Cowpen Bayou is open year round. Lakes located on the Bushley Unit are restricted to non-motorized and 10hp or less. Small boats may be hand carried and launched from non-boat ramp sites.

Hunting and Fishing Regulations

Hunting and fishing regulations are designed to provide safe recreational opportunities through wise use of renewable wildlife resources. Hunting and fishing are permitted in accordance with Federal regulations governing public use on National Wildlife Refuges as set forth in Title 50 of the Code of Federal Regulations."

Youth hunters under age 16 must remain within sight and normal voice contact of an adult 18 or older. Each adult may supervise no more than two youths

on waterfowl and small game hunts and no more than one on deer hunts.

Only pole/line or rod and reel fishing for finfish is permitted on the Headquarters Unit. Cowpen Bayou and the Highway 28 barrow pits are open year round. Duck Lake and its' tail waters, Muddy Bayou, Willow Lake and all other water are open March 1- October 31.

On the Bushley Unit recreation fishing and crawfishing is allowed year round. Pyramid nets only for crawfishing 100 lb limit nets must be attended and not left overnight. Trot lines must be attended at least once every 24 hours. 100 hook limit per line and 4 lines per boat. A maximum of 25 jugs and 25 yo-yo's per boat are allowed during daylight hours only and must be attended. Cotton line only.

We prohibit bank fishing on Bushley Creek and all fishing on other refuge waters during deer gun and primitive firearms hunts. We prohibit fishing in Black Lake, Dempsey Lake, Long Lake, Rhinehart Lake, and Round Lake during waterfowl hunts.

Access

Hunters, fishermen, and other Refuge users may only access the Refuge from 4 am until two hours after legal sunset. Waterfowl hunting must cease by 12 noon and all decoys and blinds removed from the hunting area by 1 pm. Waterfowl and small game hunting prohibited during deer primitive firearms and gun hunts.

The use of E-bikes is allowed and restricted to ATV trails only.

Tree Stands

Only portable deer stands may be used. Stands may be placed on the refuge one day before archery season and must be removed within one day after season closes. Hunters may place only ONE stand on the Refuge. Stands must have hunters name address and phone number clearly printed on them. Stands must be removed from the tree when not in use.

Harvest Reporting

Hunters must check in and check out after each hunt using the self-clearing permit available from the check station.

State hunting and fishing regulations, seasons, shooting hours, methods of take, bag limits(with exception for deer), and license requirements apply to all hunting on the Refuge. Deer hunting is closed on the Headquarters Unit when the "Center of the Lake Gauge for Catahoula Lake" reads 42 feet or more The Bushley Bayou unit closes when the Gauge read 44 feet or more.

Refer to:

www.rivergages.com –Vicksburg District-Ouachita River basin.

Permits

An annual Special Recreation Activity Permit is required for all hunters, fishermen, and ATV users.

Catahoula National Wildlife Refuge

P.O. Box 120

Rhinehart, La. 71363

210 Catahoula NWR Road

Jonesville, LA 71343

<http://www.fws.gov/refuge/catahoula>

The refuge is part of the National Wildlife Refuge System, a national network of lands and waters managed for the benefit of wildlife and people. <http://www.fws.gov/>

1-800-344-WILD

July 2024



Hunt Type	Season Dates	Harvest	Hunt Areas	Other Regulations
Squirrel and rabbit	October 5-31, 2024 (without dogs) February 1-28, 2025 (with/without dogs)	State regulations	Headquarters Unit	Refuge permit required. Beaver, Nutria, Coyote, Raccoon and Feral hogs may be taken as incidental.
Squirrel and rabbit	October 5-December 22, 2024 (without dogs) December 23, 2024-February 28, 2025 (with/without dogs)	State regulations	Bushley Unit	Refuge permit required. Beaver, Nutria, Coyote, Raccoon and Feral hogs may be taken as incidental.
Deer - Archery	State Season	State regulations	Headquarters Unit, Bushley Unit	Refuge Permit Required. Closed during primitive and modern firearms hunts. Squirrels, rabbits, beaver, nutria, coyote, raccoons, and feral hogs may be taken as incidental.
Deer- Gun	December 14-15, 2024	One deer per day	Headquarters Unit area South of French Fork Bushley Bayou Unit	Refuge Permit required. Beaver, Nutria, Coyote, Raccoon and Feral hogs may be taken as incidental.
Deer- Gun	November 29 - December 1, 2024	One deer per day	Bushley Bayou Unit	Refuge Permit required Beaver, Nutria, Coyote, Raccoon and Feral hogs may be taken as incidental.
Deer - Primitive Firearms	November 11-15, 2024 December 21-22, 2024	One deer per day	Bushley Bayou Unit	Refuge Permit required Beaver, Nutria, Coyote, Raccoon and Feral hogs may be taken as incidental.
Waterfowl – YOUTH (with / without dogs)	Special State Youth water fowl hunting season East Zone until 12 noon	State Regulations	Bushley Bayou Unit	Refuge Permit required. Beaver, Nutria, Coyote, Raccoon and Feral hogs may be taken as incidental.
Waterfowl (with/without dogs)	Tuesday, Thursday, Saturday, Sunday until 12 noon of State Season	State Regulations	Bushley Bayou Unit	Refuge Permit required. Closed during deer gun and primitive firearms hunts. Beaver, Nutria, Coyote, Raccoon and Feral hogs may be taken as incidental.
Woodcock	State season on or after December 23, 2024	State Regulations	Bushley Bayou Unit	Refuge Permit Required. Beaver, Nutria, Coyote, Raccoon and Feral hogs may be taken as incidental.

Warning:

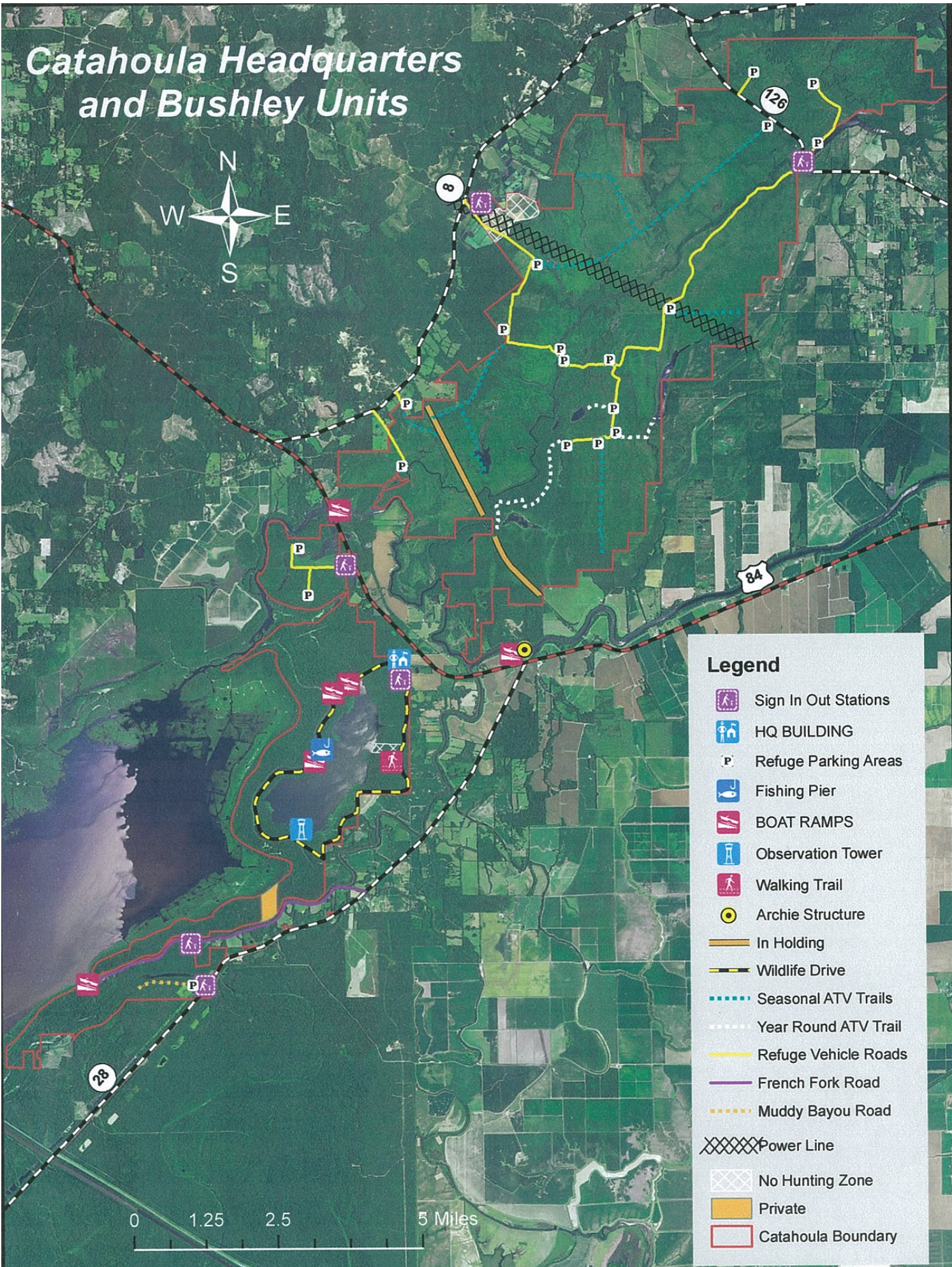
The Louisiana Department of Health and Hospitals (LDHH), in conjunction with the Louisiana Department of Environmental Quality (DEQ) has issued a fish consumption advisory for bodies of water within the parishes of Catahoula and LaSalle that include all waters on the Catahoula National Wildlife Refuge.

Women of childbearing age and children less than seven years of age should not consume largemouth bass, white bass, freshwater drum, flathead catfish, or bowfin and should consume no more than two meals per month of white crappie from the advisory area. Other adults and children seven years of age and older should consume no more than two meals per month of largemouth bass, white bass, freshwater drum, flathead catfish, or bowfin and should consume no more than four meals per month of white crappie from the advisory area.

Bushley Unit is located north of U.S Highway 84.

Headquarters Unit is located south of U.S Highway 84.

Catahoula Headquarters and Bushley Units



Legend

- Sign In Out Stations
- HQ BUILDING
- Refuge Parking Areas
- Fishing Pier
- BOAT RAMPS
- Observation Tower
- Walking Trail
- Archie Structure
- In Holding
- Wildlife Drive
- Seasonal ATV Trails
- Year Round ATV Trail
- Refuge Vehicle Roads
- French Fork Road
- Muddy Bayou Road
- Power Line
- No Hunting Zone
- Private
- Catahoula Boundary