

# Erie National Wildlife Refuge

## Welcome to Your National Wildlife Refuge

Erie National Wildlife Refuge was established in 1959. Land was purchased with funds provided from the sale of the Migratory Bird Hunting and Conservation Stamps, more commonly known as Duck Stamps. Management objectives include providing waterfowl and migratory birds with nesting, feeding, brooding, and resting habitat as well as habitat to support a diversity of other wildlife species and enhancing opportunities for wildlife-oriented public recreation and environmental education.

The refuge consists of two separate divisions.

The Sugar Lake Division lies 10 miles east of Meadville on the outskirts of Guys Mills village. It contains 5,206 acres lying in a narrow valley which includes Woodcock Creek draining to the north and Lake Creek draining to the south. Beaver ponds, pools, and marshland along the creeks are bounded by forested slopes interspersed with croplands, grasslands, marshes and wet meadows.

The Seneca Division is about 10 miles north of Sugar Lake Division or four miles southeast of Cambridge Springs. It consists of 3,753 acres situated in a forested valley where Muddy Creek and Dead Creek provide pristine wetland habitats for waterfowl, fish, freshwater mussels, and other aquatic organisms.

## Visitor Contact Station

Headquarters office hours vary with available staffing levels, but are generally Monday through Friday, 8:00 a.m. to 4:00 p.m. It is recommended that visitors call in advance to be certain that refuge staff will be present in the office.

## Trails

### *Beaver Run Trail*

This one-mile loop trail winds through woods and past beaver ponds where visitors can observe a variety of plant and animal life. The trail is located on Hanks Road.

### *Tsuga Trail*

This two-loop trail follows a 1.2 or 1.6-mile route through a variety of habitats, including mixed hardwood forests, hemlock thickets, wetlands, and meadows. Interpretive signs are posted along the trail, highlighting nature themes. Cross-country skiing and snowshoeing are permitted in season. The trail is located near the headquarters/visitor contact station.

### *Deer Run Trail*

This almost three-mile hiking loop trail is also open during winter for cross-country skiing and snowshoeing. An accessible fishing pier (Pool K) is located just across from the trail head located on Boland Rd. A ¼ mile trail spur has been added and will take visitors to an observation deck overlooking the wetlands of Pool 9. The deck is complete with benches, roof and spotting scopes. It's a wonderful spot to enjoy scenery and to watch for wildlife. The parking area for this trail can be found along Boland Road, just north of the Pool K parking lot.

### *Muddy Creek Holly Trail*

Winterberry holly, also called black alder, with bright red berries can be seen along the one-mile boardwalk trail. This out-and-back trail takes visitors over the glacial and riverine sediments of Muddy Creek's valley. The trail head is located on Johnstown Road.

### *Trolley Line Trail*

Follow an old railroad grade in the Seneca Division on this 1 ¾ mile long trail. Wildflowers and historic bridge foundations are highlights of this primitive trail. Parking areas can be found at both ends on Route 408 and Swamp Road (not a loop).

## Your Cooperation is Needed

To protect the refuge's wildlife, habitats, and other visitors, please comply with the following:

- Refuge outdoor facilities are open daily, ½ hour before sunrise to ½ hour after sunset, unless otherwise posted.
- Dogs are welcome on the refuge only when on a leash (except for approved hunting activities)
- During hunting seasons, it is recommended that trail users wear fluorescent orange.
- Leave only footprints while on the refuge; take out everything you bring in.
- Take only pictures on the refuge, don't collect natural objects, damage, or remove them from their place in the environment.
- Fires, swimming, sun-bathing, camping, kite-flying, and off-trail use (except for authorized hunting, fishing, and trapping activities) are prohibited.
- Please notify staff if you notice something that is unsafe or poses another problem on the refuge.

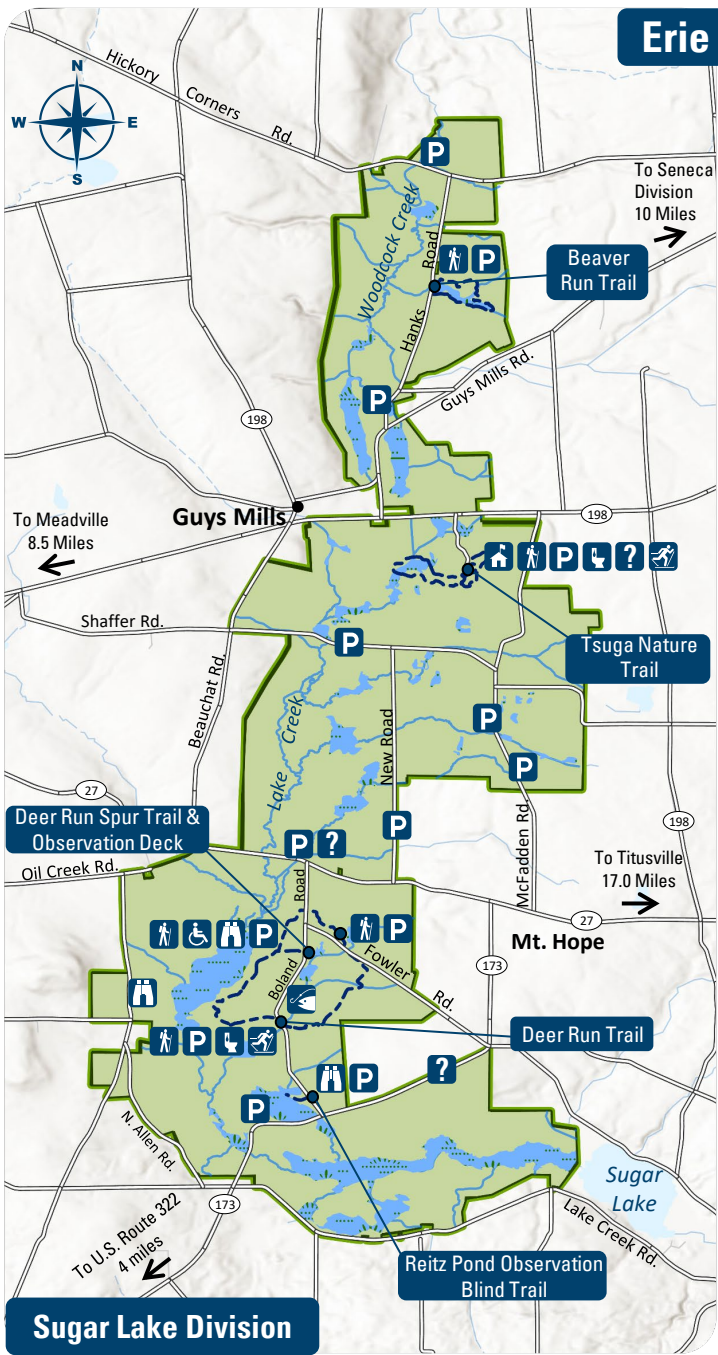
**Erie National Wildlife Refuge**  
**11296 Wood Duck Lane**  
**Guys Mills, PA 16327-9499**  
**814-580-9983**  
[www.fws.gov/refuge/erie](http://www.fws.gov/refuge/erie)

**Federal Relay Service for the deaf and hard-of-hearing**  
**1-800-877-8339**

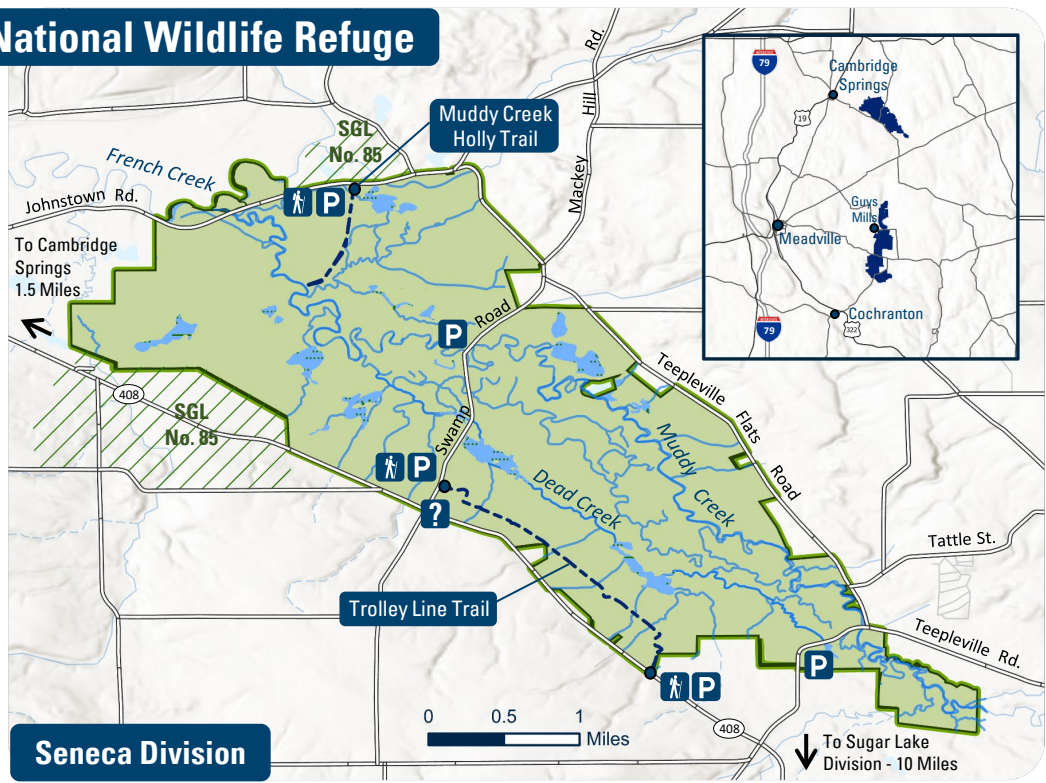
**U.S. Fish & Wildlife Service**  
**1-800-344-WILD**  
<http://www.fws.gov>



**NATIONAL WILDLIFE REFUGE SYSTEM**



# Erie National Wildlife Refuge



## Seneca Division

- Headquarters/Visitor Center  
11296 Wood Duck Lane
- Parking
- Trailhead
- Restrooms
- Wildlife Observation Area
- Fishing Pier & Observation Deck
- Accessible Trail
- Cross-Country Skiing (Seasonal)
- Information Kiosk
- Refuge Boundary
- Hiking Trail
- Point of Access
- Road
- PA Game Commission State Game Lands

### Trail Lengths

- Sugar Lake Division (North to South)**
- Beaver Run Trail:** 1.0-mile loop
  - Tsuga Trail:** 1.2-miles (short loop), 1.6 miles (long loop)
  - Deer Run Accessible Spur Trail:** 0.25-mile out and back
  - Deer Run Trail:** 2.73-mile loop
  - Reitz Pond Observation Blind Trail:** 0.11-mile out-and-back
- Seneca Division (North to South)**
- Muddy Creek Holly Trail:** 0.76-miles out and back
  - Trolley Line Trail:** 1.88-miles out and back
- Parking can be found at both ends, on Route 408 and on Swamp Rd

For more information, please visit our website: <https://www.fws.gov/refuge/erie>