

Laguna Unit

Laguna Atascosa
National Wildlife Refuge
Hunting Regulations 2024–2025



Accessibility

Equal opportunity to participate in and benefit from programs and activities of the U.S. Fish and Wildlife Service is available to all individuals regardless of physical or mental ability. For more information, please contact the U.S. Department of the Interior, Office of Equal Opportunity at

<https://www.doi.gov/pmb/eo/public-civil-rights>.

Call 956-244-2019 for more information about accommodations for hunters with disabilities.

Safety

Hunts are self-guided and in remote areas with limited vehicle access. Africanized honey bees, ticks, alligators, and rattlesnakes are commonly encountered on the refuge. Wearing snake gaiters or boots is recommended. Hunters must wear hunter orange.

Firearms

Persons possessing, transporting, or carrying firearms on National Wildlife Refuge System lands must comply with all provisions of state and local law. Persons may use (discharge) firearms only in accordance with refuge regulations (50 CFR 27.42 and specific refuge regulations in 50 CFR Part 32).

Vehicles

Licensed motor vehicles are permitted on designated Vehicle Access Roads. ATVs and UTVs are prohibited.

Camping

The only camping allowed on the refuge is at Adolph Thomae, Jr., County Park (956-748-2044).

Hunting and Fishing Regulations

Hunting regulations are designed to provide safe recreational opportunities through wise use of renewable wildlife resources. Hunting is permitted in accordance with federal regulations governing public use on national wildlife refuges as set forth in Title 50 of the Code of Federal Regulations.

Hunting is allowed in accordance with applicable Texas Parks and Wildlife Department (TPWD) regulations subject to the conditions stated below.

Access

WHEN: During permitted hunting periods, hunter access is allowed from 1.5 hours before legal sunrise to 1 hour after legal shooting hours. Hunters tracking game after sunset must call the **Hunt Check Station** at **956-443-9227**.

WHERE: Parking is allowed only at clearly designated parking areas or vehicle access roads. Hunters may only enter units via specified access points, and only drive on Vehicle Access Roads, as designated on the map. Vehicles parked along public roads must be pulled entirely onto the shoulder and must not block roadways, gates, or bike lanes. Open trails in hunt units may be accessed by foot, bicycle, or e-bike. The only authorized method of travel off trail is by foot. One Vehicle Validation Tag per hunter must be displayed face up on the vehicle dashboard at all times.

Permit Application Process

Refuge permits are processed through the TPWD Public Drawn Hunt System. Up to 4 hunters may apply on one application. Each hunter age 9 to 16 must be under the direct supervision of an adult age 18 or older. Applications must be completed online at https://tpwd.texas.gov/huntwild/hunt/public/public_hunt_drawing/.

Fees

Permits cost \$80.00 per hunter for hunts up to 3 days, and \$130.00 per hunter for hunts 4 days or more, plus a processing fee of \$3.00 per application. Hunt permits are non-transferable and all hunt fees are

Laguna Atascosa National Wildlife Refuge
Laguna Unit
Hunting Authorization 2024 – 2025

DO NOT PRINT
USFWS staff will send out hunting authorization
for your particular hunt one week (7 days) prior to
your scout date.

Signature (authorizations are not transferable)

non-refundable. Hunts may be canceled without notice due to unforeseen, extenuating circumstances.

Hunter Orientation

Drawn hunters must read this attachment in its entirety and be in full understanding prior to hunting on the refuge.

An official form of identification, state hunting license, and state hunting permit number are required upon request.

Scouting

Hunt units are open to scouting from sunrise to sunset the day prior to each hunt period. Up to two non-permitted people may accompany each hunter into hunt units during scouting periods. A Vehicle Validation Tag must be displayed face up on the vehicle dashboard with all names legible.

Blinds and Stands

Hunting is allowed from portable stands or blinds, or by stalking and still hunting. Blinds/stands must be labeled with permit/license number, and must not be attached to trees or include natural vegetation. Blinds/stands may be installed during scouting the day before the permitted hunting period, and must be removed by the last day of the hunting period. Limit one blind or stand per hunter.

Hunter Assistance

This can be a physically challenging hunt, and hunters are expected to harvest and retrieve their own game.

22688 Buena Vista Rd.
Los Fresnos, TX 78566
956-244-2019

https://www.fws.gov/refuge/laguna_atascosa/

U.S. Fish & Wildlife Service
1-800-344-WILD

May 2024



Activity	Season	Hunting Hours	Special Regulations
Laguna Unit Archery Hunts	Nov. 1 – 5, 2024 Nov. 8 – 12, 2024 Dec. 13 – 17, 2024 Jan. 10 – 14, 2025	State Shooting Hours	All state approved archery equipment is allowed. Bag limit: Two deer, including up to one male. No spotted fawns. Unlimited exotic ungulates, including nilgai antelope, feral hogs, and others.
Laguna Unit Exotic Firearm Hunt	Jan. 17 – 19, 2025	State Shooting Hours	Centerfire rifles, muzzleloaders .40 caliber or larger No bag limit: Unlimited exotic ungulates, including nilgai antelope, feral hogs, and others.
Laguna Unit Firearm Hunts	Nov. 15 – 17, 2024 Nov. 22 – 24, 2024 Dec. 6 – 8, 2024 Dec. 20 – 22, 2024	State Shooting Hours	All state approved firearm equipment is allowed. Bag limit: Two deer, including up to one male. No spotted fawns. Unlimited exotic ungulates, including nilgai antelope, feral hogs, and others.
Laguna Unit American Alligator	Apr. 4 – 6, 2025	State shooting hours	Hook, line, and firearm methods allowed. All state approved centerfire firearm equipment is allowed. Bag limit: One American Alligator
<p>A quota of 200 hunt authorizations is available for each Laguna Unit Archery Hunt. A quota of 35 hunt authorizations is available for each Laguna Unit Firearm Hunt. A quota of 20 hunt authorizations is available for each Laguna Unit American Alligator Hunt.</p>			

A walk-in cooler is available at the Laguna Atascosa Unit Hunt Check Station, only for temporary storage. During hunts, the **Hunt Check Station** can be reached at **956-443-9227**.

Field Dressing and Game Check

Harvested game must be field dressed before removal from the unit. All game, including hogs, must be reported by telephone via text to the **Hunt Check Station** at **956-443-9227**. Please report name, species and sex of harvested game, unit where it was harvested, and estimated weight. Hunters must take with them all skins and carcasses removed from hunt units for inspection by TAHC (optional). Hunters must have proof of sex as required by TPWD.

Signs and Boundaries

- Parking Area: Designated area to park while hunting
- Refuge Boundary: Entry permitted in accordance with refuge regulations
- Closed Area: All entry prohibited
- No Hunting Zone: Hunting, weapons, and game retrieval prohibited

Prohibited Activities

By law, recreational activities on national wildlife refuges are prohibited unless expressly permitted. The following activities are prohibited while scouting or hunting:

- Exceeding the posted refuge speed limit of 25 mph or less
- The take or harassment of any plant or animal species not listed on this permit
- Possession or use of dogs, and the possession or use of alcoholic beverages or drugs
- Marking or flagging any tree or refuge feature in any way
- Permanent tree stands, nails, screw-in steps, or other items that penetrate the outer bark of a tree
- Use of artificial lights and cameras to locate, observe, or take animals; and the use of drones or aircraft
- The use of natural vegetation to make or augment hunting blinds or stands
- Use of, or hunting from, any type of watercraft or floating device
- Possession or distribution of bait, or hunting over bait
- Use of motorized or electric carts or wagons
- Fires, littering, or target practice

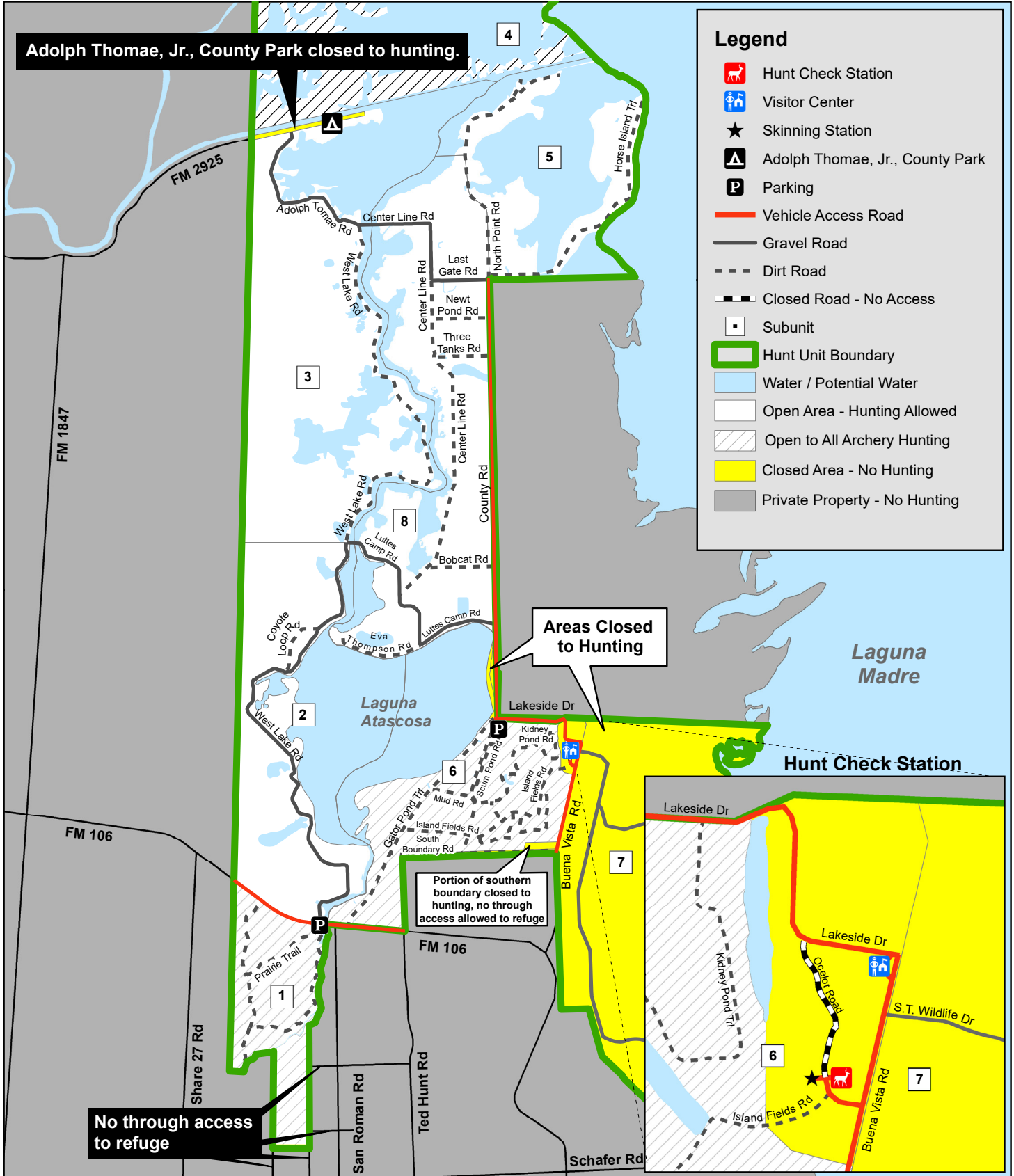




U.S. Fish & Wildlife Service

2024 - 2025 Laguna Unit Hunt Map

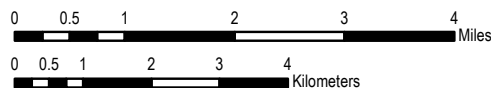
Laguna Atascosa National Wildlife Refuge



Legend

- Hunt Check Station
- Visitor Center
- Skinning Station
- Adolph Thomae, Jr., County Park
- Parking
- Vehicle Access Road
- Gravel Road
- Dirt Road
- Closed Road - No Access
- Subunit
- Hunt Unit Boundary
- Water / Potential Water
- Open Area - Hunting Allowed
- Open to All Archery Hunting
- Closed Area - No Hunting
- Private Property - No Hunting

Produced by: USFWS, Laguna Atascosa NWR
 Meridian: Greenwich
 Datum and Projection: NAD 1983 UTM Zone 14N
 Published Date: April 29, 2021



1:105,100

