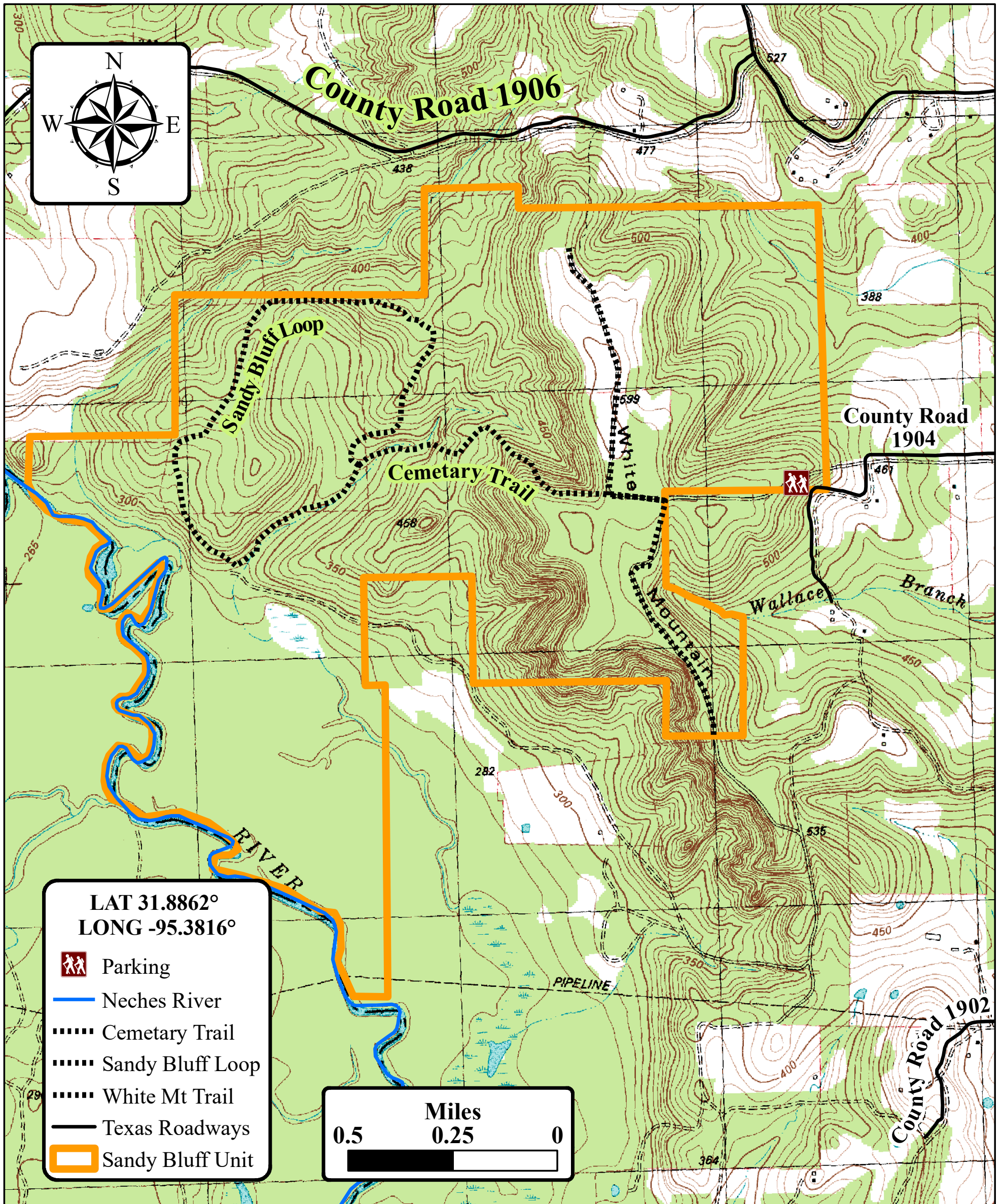


# U.S. Fish & Wildlife Service

## Neches River NWR Sandy Bluff Unit



### Prohibited Activities

- Possession of alcoholic beverages while hunting.
- Camping and Fires
- Searching for or removal of any natural items such as antlers, plants, historic, and archaeological features, are protected by Federal law.
- Use of electronic or photographic trail monitoring devices
- Marking or flagging any tree or other refuge feature with reflectors, paint, or other substance.
- Permanent tree stands, nails, screw-in steps, or other items that penetrate the outer bark of a tree.
- Leaving tree stands and ground blinds in the same location for more than permitted days of hunt.
- Access to the refuge from private property
- Hunting is prohibited within 200 yards of any public use facility, highway, county road, or refuge boundary.

This is a unit of the National Wildlife Refuge System, a network of lands and waters managed for the benefit of wildlife and people.

