

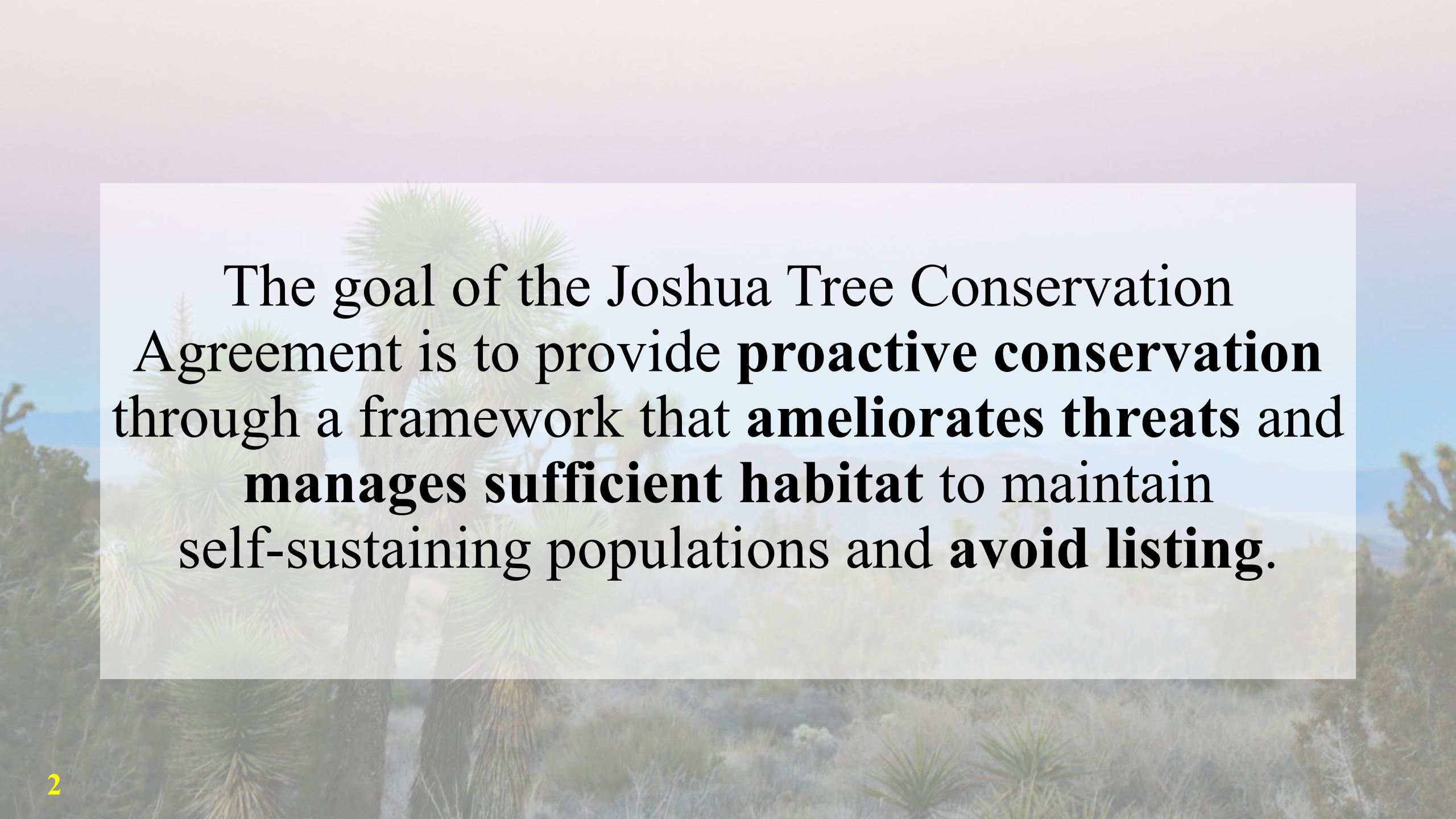
A photograph of a desert landscape featuring several Joshua trees in the foreground and middle ground. The trees have their characteristic spiky, star-shaped leaves and thick, woody trunks. In the background, there are rolling hills and mountains under a clear, light blue sky. The overall scene is bright and natural.

# Joshua Tree Conservation Agreement

Julie Simonsen  
U.S. Fish and Wildlife Service  
[Julie\\_Simonsen@fws.gov](mailto:Julie_Simonsen@fws.gov)

Tribal Coordination Meeting  
November 7, 2024



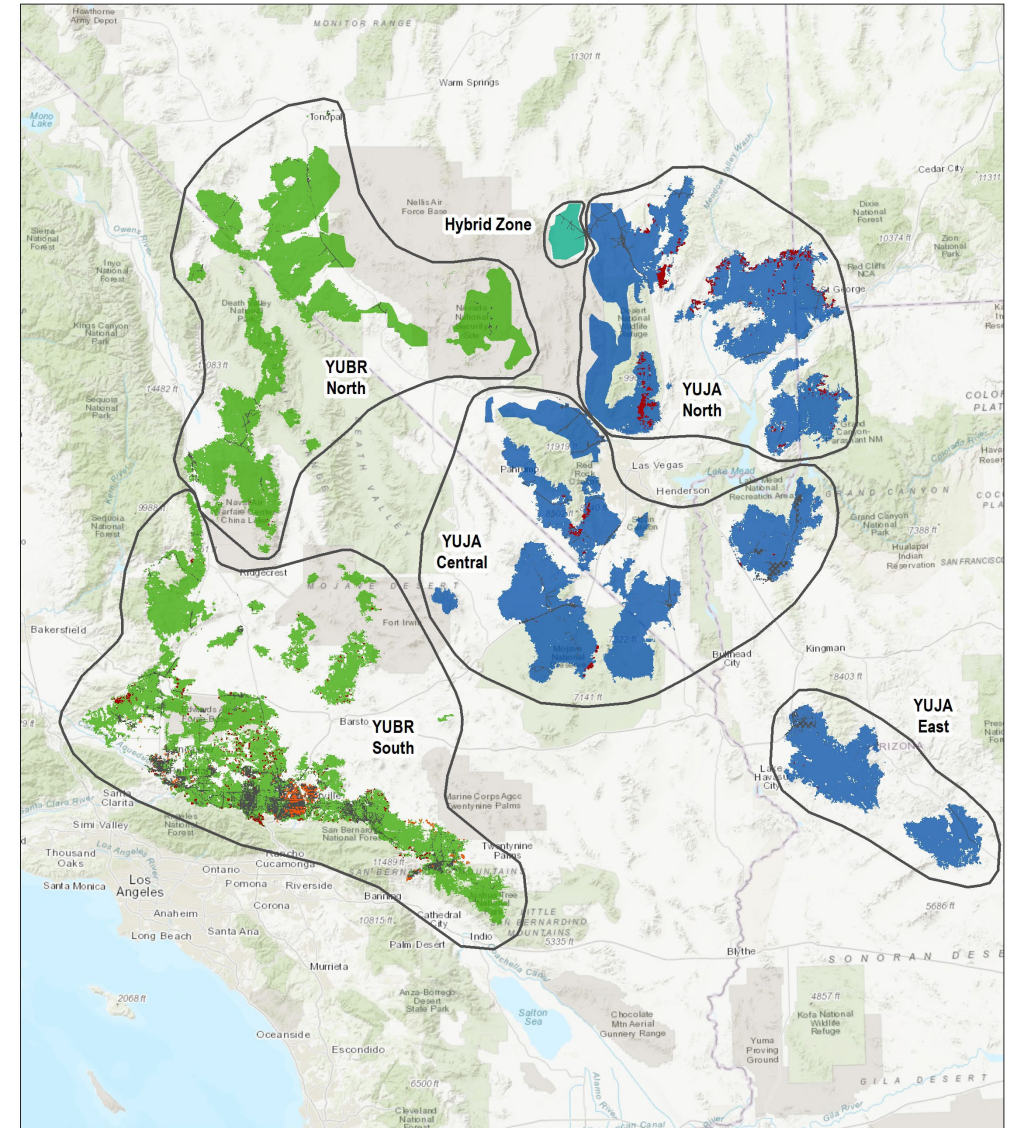


The goal of the Joshua Tree Conservation Agreement is to provide **proactive conservation** through a framework that **ameliorates threats** and **manages sufficient habitat** to maintain self-sustaining populations and **avoid listing**.



# Preliminary List for Tribal Coordination

Tribes
Yuhaaviatam of San Manuel Nation
Tejon Indian Tribe
Colorado River Indian Tribes
Lone Pine Paiute-Shoshone Tribe
Twenty-Nine Palms Band of Mission Indians
Timbisha Shoshone Tribe
Cocopah Indian Tribe
Chemehuevi Indian Tribe



Carlsbad Fish and Wildlife Office  
2177 Salk Avenue, Suite 250  
Carlsbad, CA 92008  
(760) 431-9440

Data: USFWS, USGS  
Basemap: ESRI World Terrain  
Date: May 06, 2022  
S:\Intern\emilie.Lahey\Recovery\JOTR\SSAMXD\Distribution\Hst.mxd

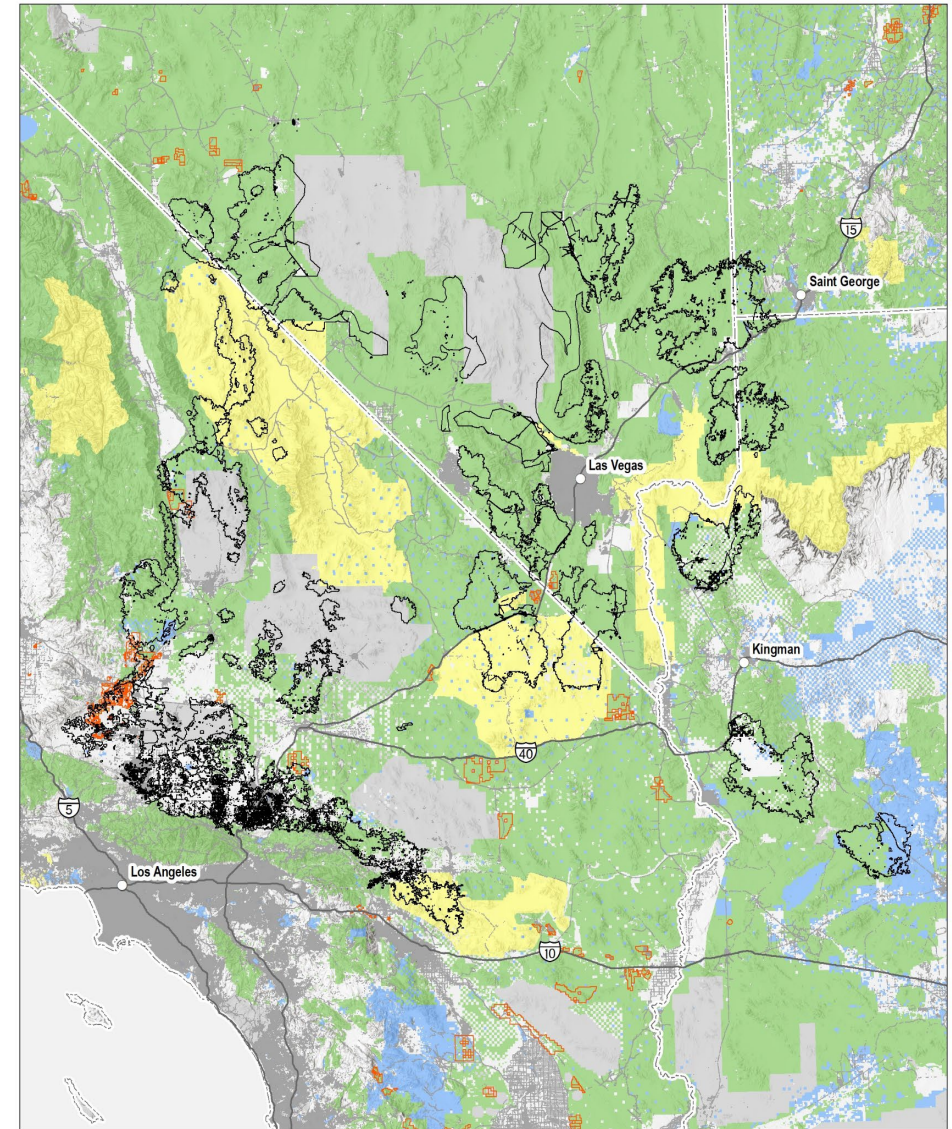
- Yucca brevifolia
- Yucca jaegeriana
- Hybrid Zone
- Dead Joshua Trees
- Ornamental Joshua Trees
- Developed
- Analysis Units





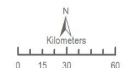
# Petition History and Status

Year	Action
2015	Petition to list the Western Joshua Tree
2019	Not Warranted Decision
2019-2021	Litigation
2023	Revised SSA for Western and Eastern Joshua Trees
2023	Not Warranted Decision
2023-2025	Litigation



Carlsbad Fish and Wildlife Office  
2177 Salk Avenue, Suite 250  
Carlsbad, CA 92008  
(760) 431-9440  
  
Data: USFWS, USGS, BLM, Kern County  
Basemap: ESRI World Terrain  
Date: Mar 23, 2022  
S:\albert\miller\Listing\Recovery\JOTRI\SSA\MXD\CurConditions.mxd

- Analysis Units
- Renewable Energy Locations
- Developed
- Military
- Federal
- National Park Service
- State







**Drought exacerbated herbivory and predation**



**Drought and Increasing temperatures**

# Threats



**Invasive Grasses & Wildfire**



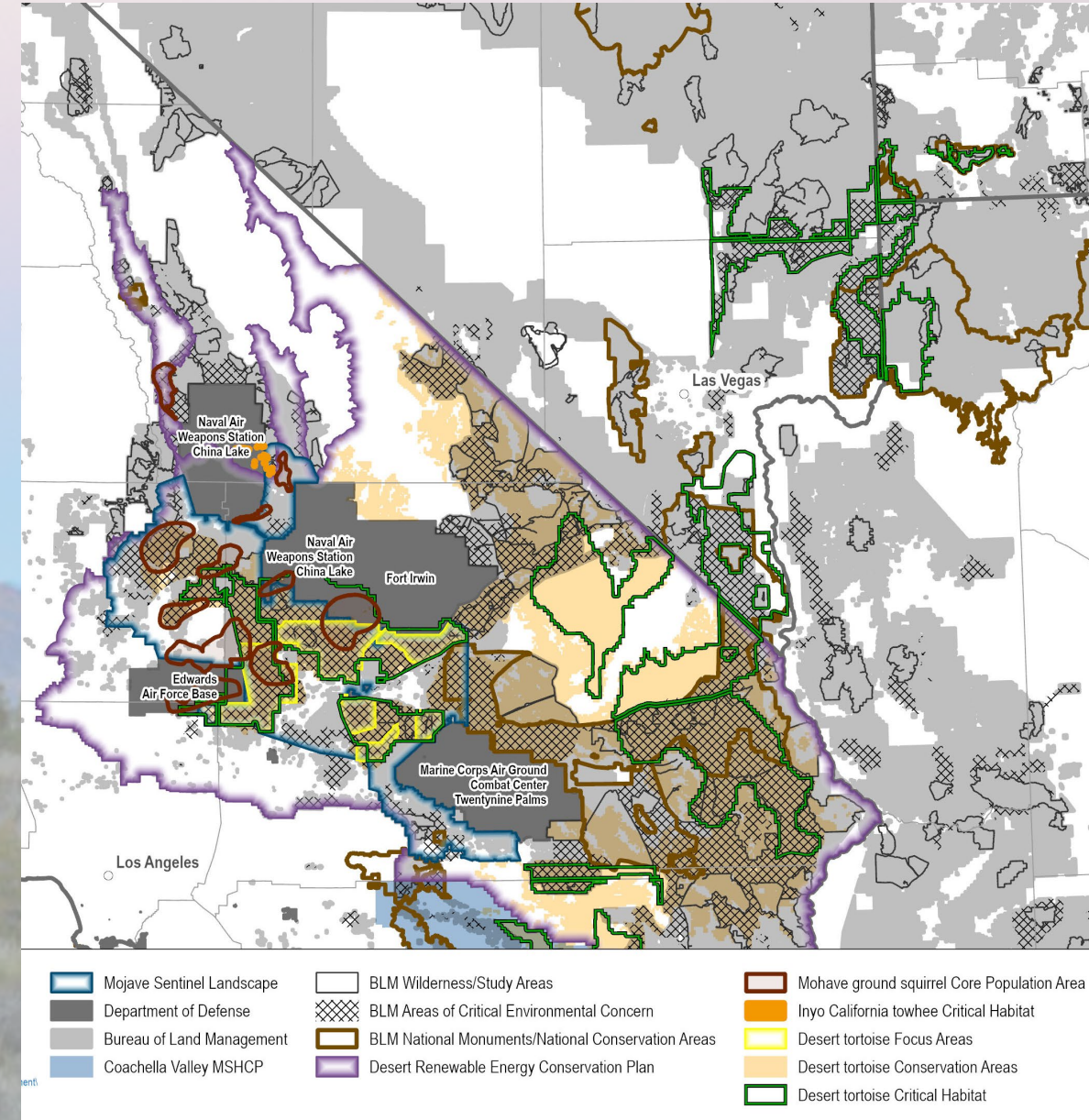
**Habitat Loss**





# Existing Policies and Guidance

- BLM Integrated Vegetation Management Handbook
- DoD Integrated Natural Resource Management Plans (INRMPS)
- Desert Renewable Energy Conservation Plan (DRECP)
- NFS Land Management Plans
- RASP Focal Areas for Desert Tortoise
- Sentinel Landscape
- State and Local Ordinances
- USFWS Desert Tortoise Critical Habitat
- Wilderness (Federal and State)

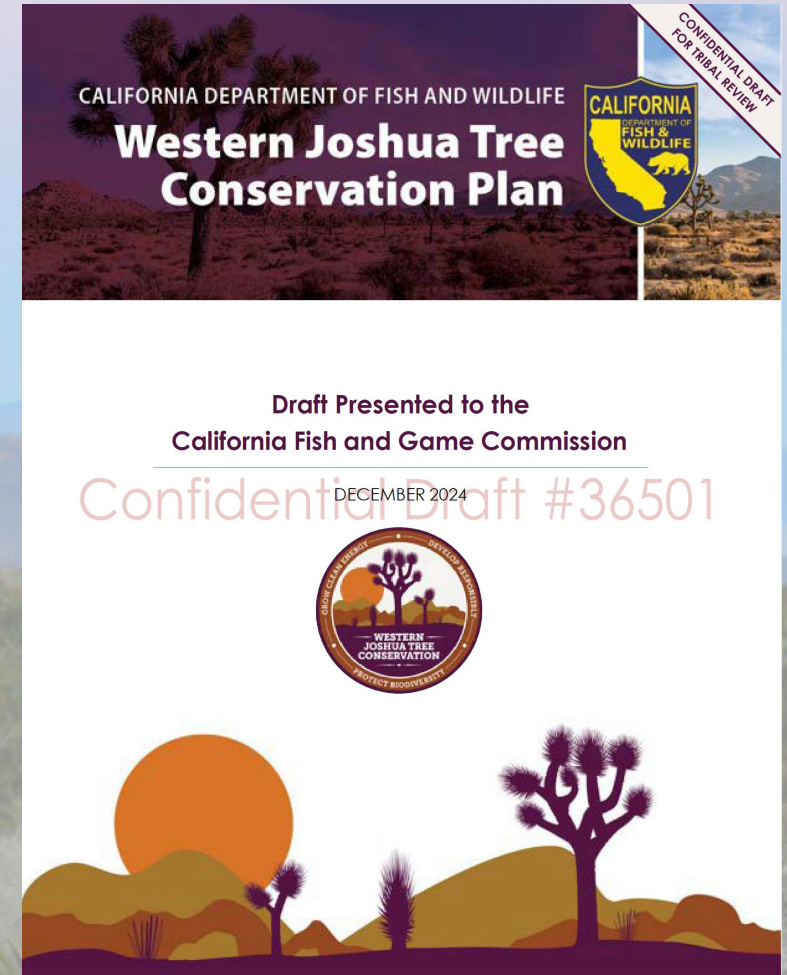




# State of California

## Western Joshua Tree Conservation Act

- Enacted in July 2023
- Tribal Co-Management
- In lieu fee program
- Western Joshua Tree Conservation Plan
- Guidance for Tree Relocation
- Rangewide Monitoring
- Formation of the Joshua Tree Coalition



# Joshua Tree Coalition

## Draft Vision Statement

CLIMATE CHANGE RESILIENT JOSHUA TREE  
ECOSYSTEMS THRIVE THROUGH COLLECTIVE  
STEWARDSHIP, TRADITIONAL KNOWLEDGE,  
SCIENCE, AND PUBLIC SUPPORT.



# Conservation Agreement Framework

- Establish management units
- Identify high priority areas for conservation.
- Strategies for ameliorating threats.
- Standardize avoidance and minimization measures
- Establish a mitigation strategy
- Implement Monitoring
- Implement Restoration (seed collection and outplanting)

## Flat-tailed Horned Lizard Rangewide Management Strategy, 2003 Revision

An Arizona-California Conservation Strategy



*Prepared and edited by the*

Flat-tailed Horned Lizard Interagency Coordinating Committee  
May 2003



# Conclusion & Next Steps

- Engage with tribes to develop an agreement together
- Synthesize existing plans and their benefit to Joshua trees
- Develop a strategy that complements existing policies
- Develop a path toward shared stewardship



A photograph of a desert landscape featuring several Joshua trees in the foreground and middle ground. The trees have their characteristic spiky, fan-shaped leaves and thick, woody trunks. In the background, there are rolling mountains under a clear, light blue sky. The overall scene is bright and clear.

# QUESTIONS