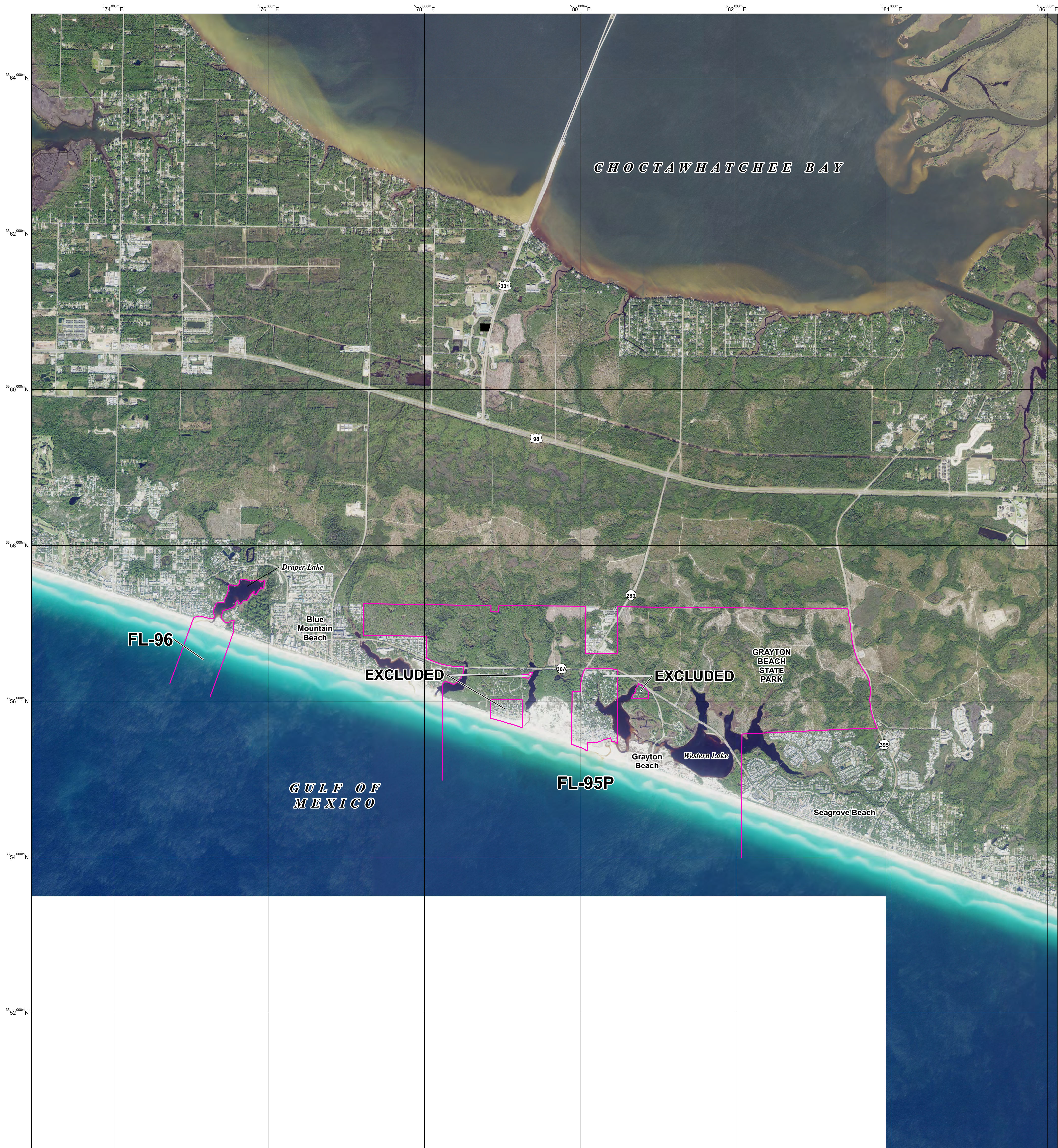


Minor and Technical Correction



JOHN H. CHAFEE COASTAL BARRIER RESOURCES SYSTEM

Grayton Beach Unit FL-95P Draper Lake Unit FL-96

This draft map was produced by the U.S. Fish and Wildlife Service to show minor and technical corrections to Unit FL-95P of the John H. Chafee Coastal Barrier Resources System (CBRS) and will not become effective unless adopted by Congress through legislation.

The seaward side of the CBRS unit includes the entire sand-sharing system, including the beach and nearshore area. The sand-sharing system of CBRS units is normally defined by the 30-ft bathymetric contour. In large coastal embayments and the Great Lakes, the sand-sharing system is defined by the 20-ft bathymetric contour or a line approximately one mile seaward of the shoreline, whichever is nearer the coastal barrier.

For additional information about the Coastal Barrier Resources Act or CBRS, please visit www.fws.gov/cbra.

- Revised System Unit Boundary
- - - Revised Otherwise Protected Area (OPA) Boundary; OPAs are identified on the map by the letter "P" following the unit number
- - - - - Approximate State Boundary
- $36540000''N$ 2000-meter Universal Transverse Mercator grid values
- Imagery Date(s): 2019
- Imagery Source(s): United States Department of Agriculture
National Agricultural Imagery Program
- Coordinate System: North American Datum 1983
Universal Transverse Mercator Zone 16 North

