

Final Recommended Boundaries



JOHN H. CHAFEE COASTAL BARRIER RESOURCES SYSTEM

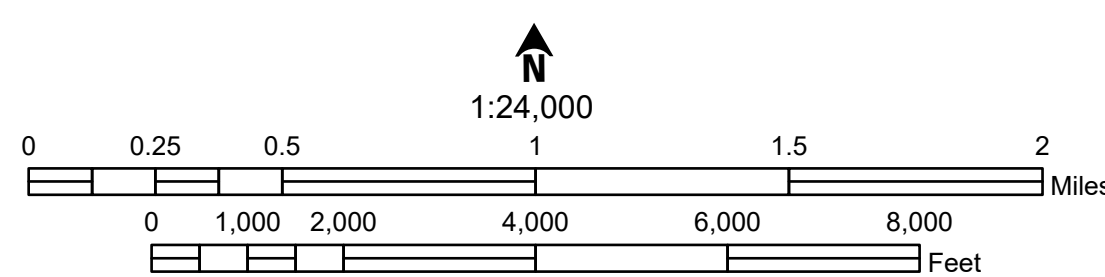
Morris Island Complex M06/M06P

This draft map was produced by the U.S. Fish and Wildlife Service to show final recommended boundary changes to the John H. Chafee Coastal Barrier Resources System (CBRS) as directed by section 4 of the Coastal Barrier Resources Reauthorization Act of 2005 (Public Law 109-226).

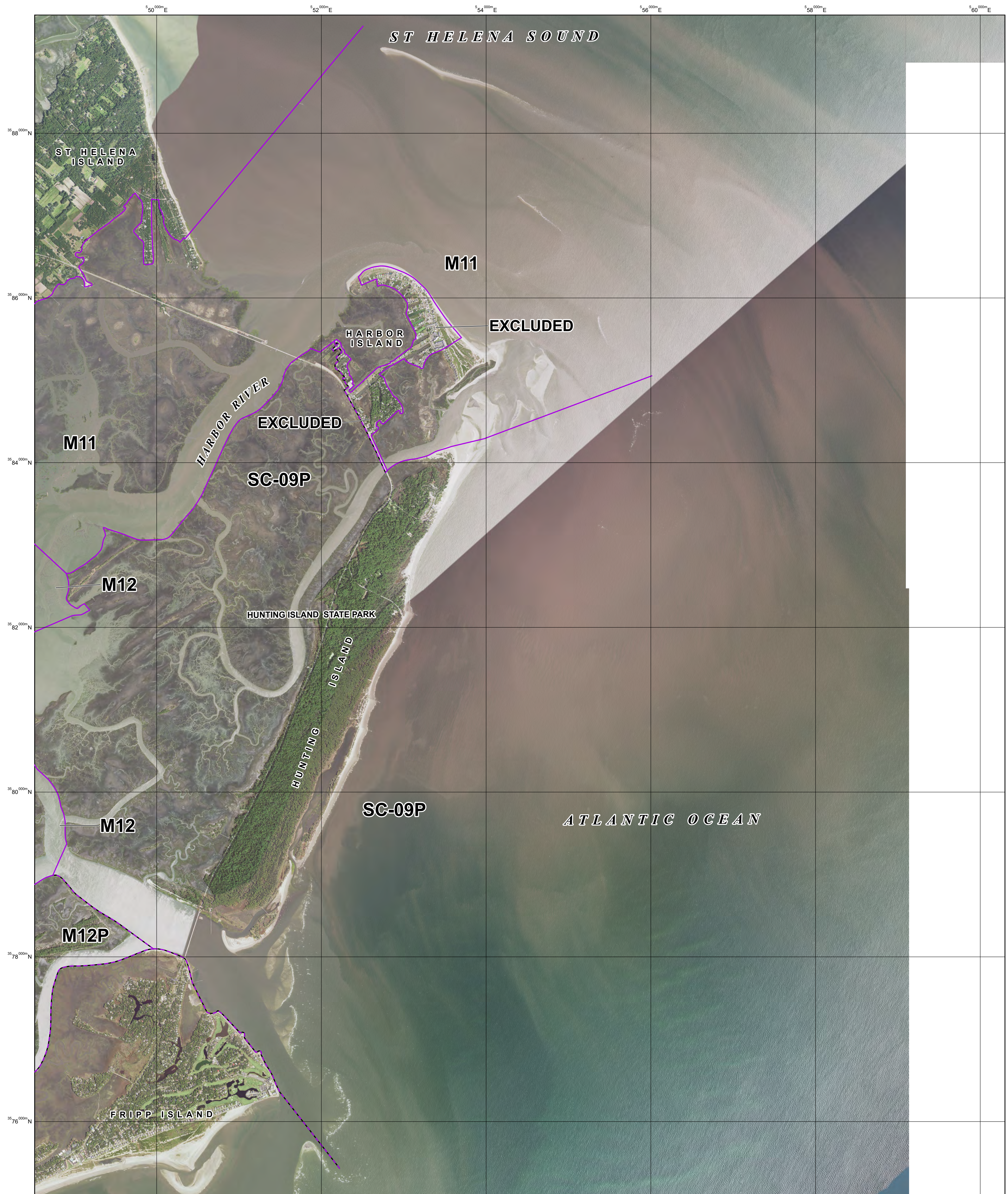
The seaward side of the CBRS unit includes the entire sand-sharing system, including the beach and nearshore area. The sand-sharing system of CBRS units is normally defined by the 30-ft bathymetric contour. In large coastal embayments and the Great Lakes, the sand-sharing system is defined by the 20-ft bathymetric contour or a line approximately one mile seaward of the shoreline, whichever is nearer the coastal barrier.

For additional information about the Coastal Barrier Resources Act or CBRS, please visit www.fws.gov/cbra.

- Final Recommended System Unit Boundary
- - - Final Recommended Otherwise Protected Area (OPA) Boundary; OPAs are identified on the map by the letter "P" following the unit number
- - - - - Approximate State Boundary
- $36540000''N$ 2000-meter Universal Transverse Mercator grid values
- Imagery Date(s): 2019
- Imagery Source(s): United States Department of Agriculture National Agricultural Imagery Program
- Coordinate System: North American Datum 1983 Universal Transverse Mercator Zone 17 North



Final Recommended Boundaries



JOHN H. CHAFEE COASTAL BARRIER RESOURCES SYSTEM

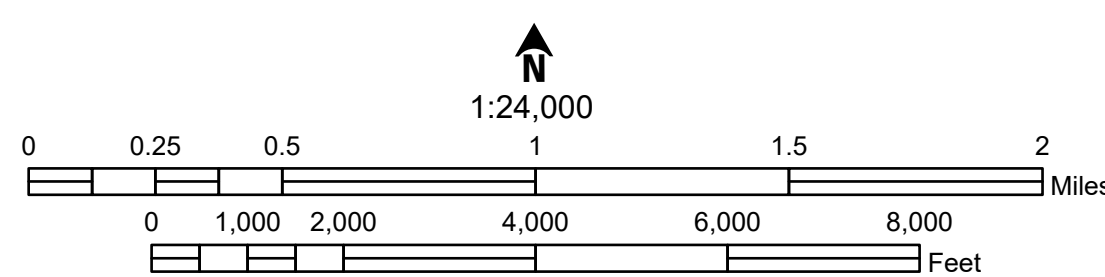
Hunting Island Unit SC-09P (1 of 2) Harbor Island Unit M11 (1 of 2) St. Phillips Island Unit M12/M12P (1 of 3)

This draft map was produced by the U.S. Fish and Wildlife Service to show final recommended boundary changes to the John H. Chafee Coastal Barrier Resources System (CBRS) as directed by section 4 of the Coastal Barrier Resources Reauthorization Act of 2005 (Public Law 109-226).

The seaward side of the CBRS unit includes the entire sand-sharing system, including the beach and nearshore area. The sand-sharing system of CBRS units is normally defined by the 30-ft bathymetric contour. In large coastal embayments and the Great Lakes, the sand-sharing system is defined by the 20-ft bathymetric contour or a line approximately one mile seaward of the shoreline, whichever is nearer the coastal barrier.

For additional information about the Coastal Barrier Resources Act or CBRS, please visit www.fws.gov/cbra.

- Final Recommended System Unit Boundary
- Final Recommended Otherwise Protected Area (OPA) Boundary; OPAs are identified on the map by the letter "P" following the unit number
- Approximate State Boundary
- 2000-meter Universal Transverse Mercator grid values
- Imagery Date(s): 2019
- Imagery Source(s): United States Department of Agriculture National Agricultural Imagery Program
- Coordinate System: North American Datum 1983 Universal Transverse Mercator Zone 17 North



Final Recommended Boundaries



JOHN H. CHAFEE COASTAL BARRIER RESOURCES SYSTEM

Hunting Island Unit SC-09P (2 of 2) Harbor Island Unit M11 (2 of 2) St. Phillips Island Unit M12/M12P (2 of 3)

This draft map was produced by the U.S. Fish and Wildlife Service to show final recommended boundary changes to the John H. Chafee Coastal Barrier Resources System (CBRS) as directed by section 4 of the Coastal Barrier Resources Reauthorization Act of 2005 (Public Law 109-226).

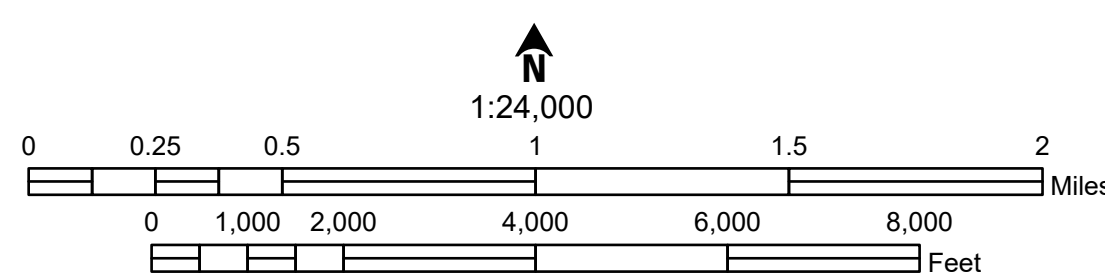
The seaward side of the CBRS unit includes the entire sand-sharing system, including the beach and nearshore area. The sand-sharing system of CBRS units is normally defined by the 30-ft bathymetric contour. In large coastal embayments and the Great Lakes, the sand-sharing system is defined by the 20-ft bathymetric contour or a line approximately one mile seaward of the shoreline, whichever is nearer the coastal barrier.

For additional information about the Coastal Barrier Resources Act or CBRS, please visit www.fws.gov/cbra.

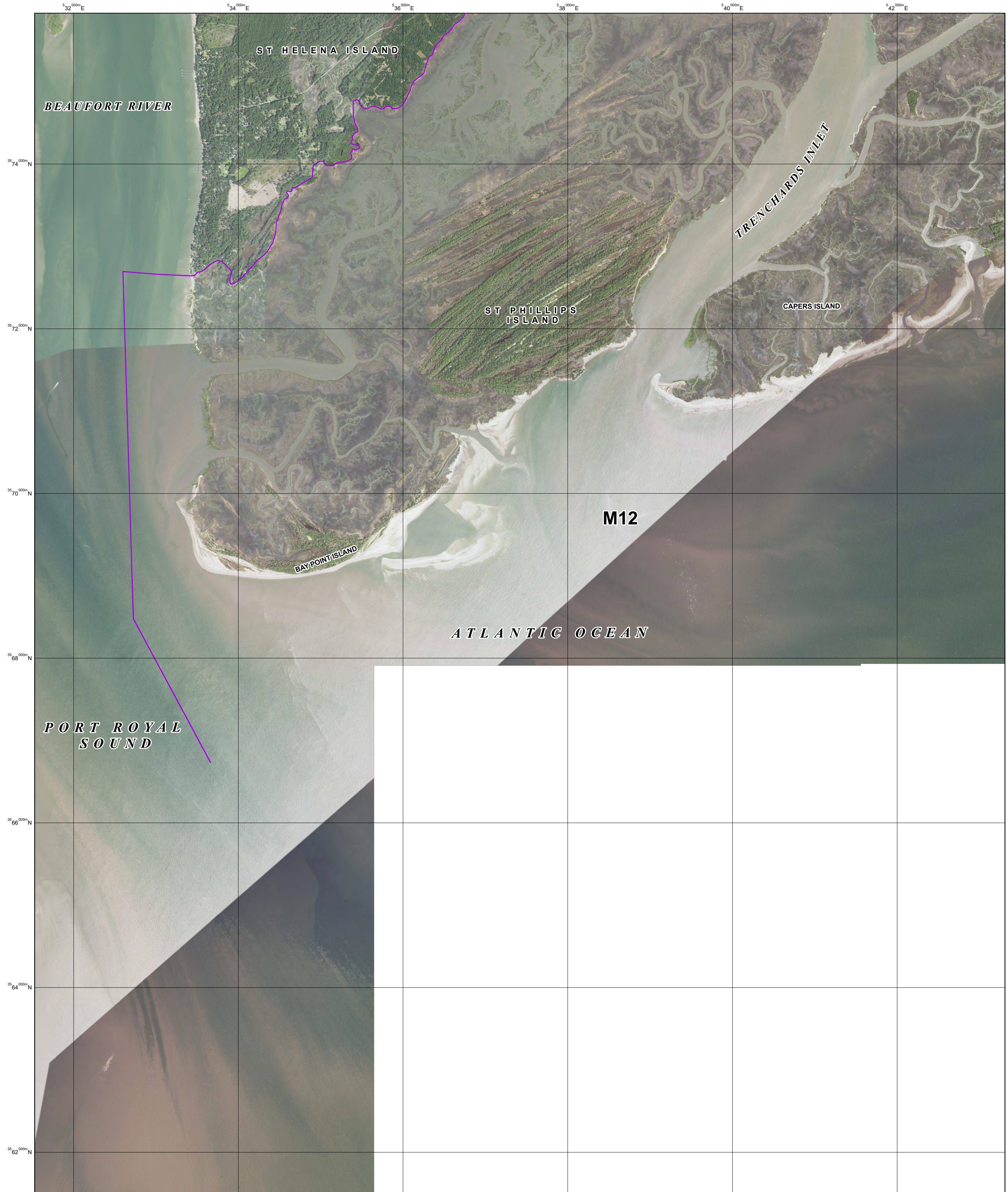
- Final Recommended System Unit Boundary
- - - - Final Recommended Otherwise Protected Area (OPA) Boundary; OPAs are identified on the map by the letter "P" following the unit number
- - - - Approximate State Boundary
- 3654000°N 2000-meter Universal Transverse Mercator grid values

Imagery Date(s): 2019
 Imagery Source(s): United States Department of Agriculture National Agricultural Imagery Program
 Coordinate System: North American Datum 1983 Universal Transverse Mercator Zone 17 North

Draft Map: 45-022B Map Date: April 29, 2021



Final Recommended Boundaries





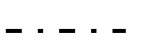
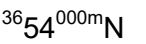
JOHN H. CHAFEE COASTAL BARRIER RESOURCES SYSTEM

St. Phillips Island Unit M12 (3 of 3)

This draft map was produced by the U.S. Fish and Wildlife Service to show final recommended boundary changes to the John H. Chafee Coastal Barrier Resources System (CBRS) as directed by section 4 of the Coastal Barrier Resources Reauthorization Act of 2005 (Public Law 109-226).

The seaward side of the CBRS unit includes the entire sand-sharing system, including the beach and nearshore area. The sand-sharing system of CBRS units is normally defined by the 30-ft bathymetric contour. In large coastal embayments and the Great Lakes, the sand-sharing system is defined by the 20-ft bathymetric contour or a line approximately one mile seaward of the shoreline, whichever is nearer the coastal barrier.

For additional information about the Coastal Barrier Resources Act or CBRS, please visit www.fws.gov/cbra.

-  Final Recommended System Unit Boundary
-  Final Recommended Otherwise Protected Area (OPA) Boundary; OPAs are identified on the map by the letter "P" following the unit number
-  Approximate State Boundary
-  2000-meter Universal Transverse Mercator grid values
- Imagery Date(s): 2019
- Imagery Source(s): United States Department of Agriculture National Agricultural Imagery Program
- Coordinate System: North American Datum 1983 Universal Transverse Mercator Zone 17 North

