

# Umatilla National Wildlife Refuge

## *Hunting Regulations — Boardman, Paterson, Ridge and Whitcomb Units*



Hunting is permitted in accordance with state regulations (Oregon – [www.dfw.state.or.us/resources/](http://www.dfw.state.or.us/resources/); Washington – [wdfw.wa.gov/hunting/regulations/](http://wdfw.wa.gov/hunting/regulations/)) and special refuge regulations.

**Open to Hunting** – Goose, duck, coot, snipe, dove, and upland game birds (excluding turkey), and deer as permitted.

**Upland Game Birds** – On the Whitcomb Unit, upland game birds may only be hunted from 12:00 noon until the close of state hunt hours Wednesdays, Saturdays, Sundays, and all federally observed holidays within the respective state seasons. All other areas are per state legal hunting hours.

**Dove Hunting** – Dove hunting for all species is only allowed during the state mourning dove season.

**Deer Hunting** – Deer hunting is allowed on the Paterson and Whitcomb (including Crow Butte Island) Units with a special permit issued by Washington Department of Fish and Wildlife (WDFW). These permits specify weapon type and date range.

**Closed to Hunting** – All other species of wildlife not listed are protected. Protected species include, but are not limited to, elk, bear, snakes, raven, crow, coyote, porcupine, turkey, squirrels, and rabbits.

**Sanctuary Closure Area** – ALL islands and waters within the sanctuary area are closed to hunting. Islands within the sanctuary area are closed to all access. Hunting is allowed along the Ridge Unit shoreline.

**Days** – The Boardman and Ridge Units are open daily. The Paterson and Whitcomb Units are open Wednesdays, Saturdays, Sundays, and all federally observed holidays within the respective state seasons (does not apply to deer hunting permits).

**Hours** – The refuge is open for hunting access from 1-1/2 hours before legal hunting time to 1-1/2 hours after legal hunting time.

**General Public Entry** – For non-hunters, the refuge is open from sunrise to sunset in areas open for public use.

**Blinds** – Only portable or temporary blinds constructed of non-living natural materials are permitted. Digging or using pit blinds is not allowed.

**Firearms & Ammunition** – Firearms may only be discharged in accordance with FWS regulations (50 CFR 27.42) and refuge-specific regulations (50 CFR Part 32). Only shotguns are permitted for waterfowl, snipe, dove, and upland game birds. Only federally approved non-toxic shot may be used or possessed for shotguns.

**Vehicle Travel** – All vehicles, including bicycles, are restricted to designated motorized routes of travel and parking areas.

**Boats (Also See State Regulations)** – On the Boardman, Paterson and Whitcomb Units, boats may only be used for hunting in designated areas of the Columbia River and its backwaters (see map). On the Ridge Unit, hunting from boats is prohibited; however, boats may be used to set decoys and retrieve downed birds.

**Dogs** – Dogs must be kept on leash, except during the lawful pursuit of game during legal seasons.

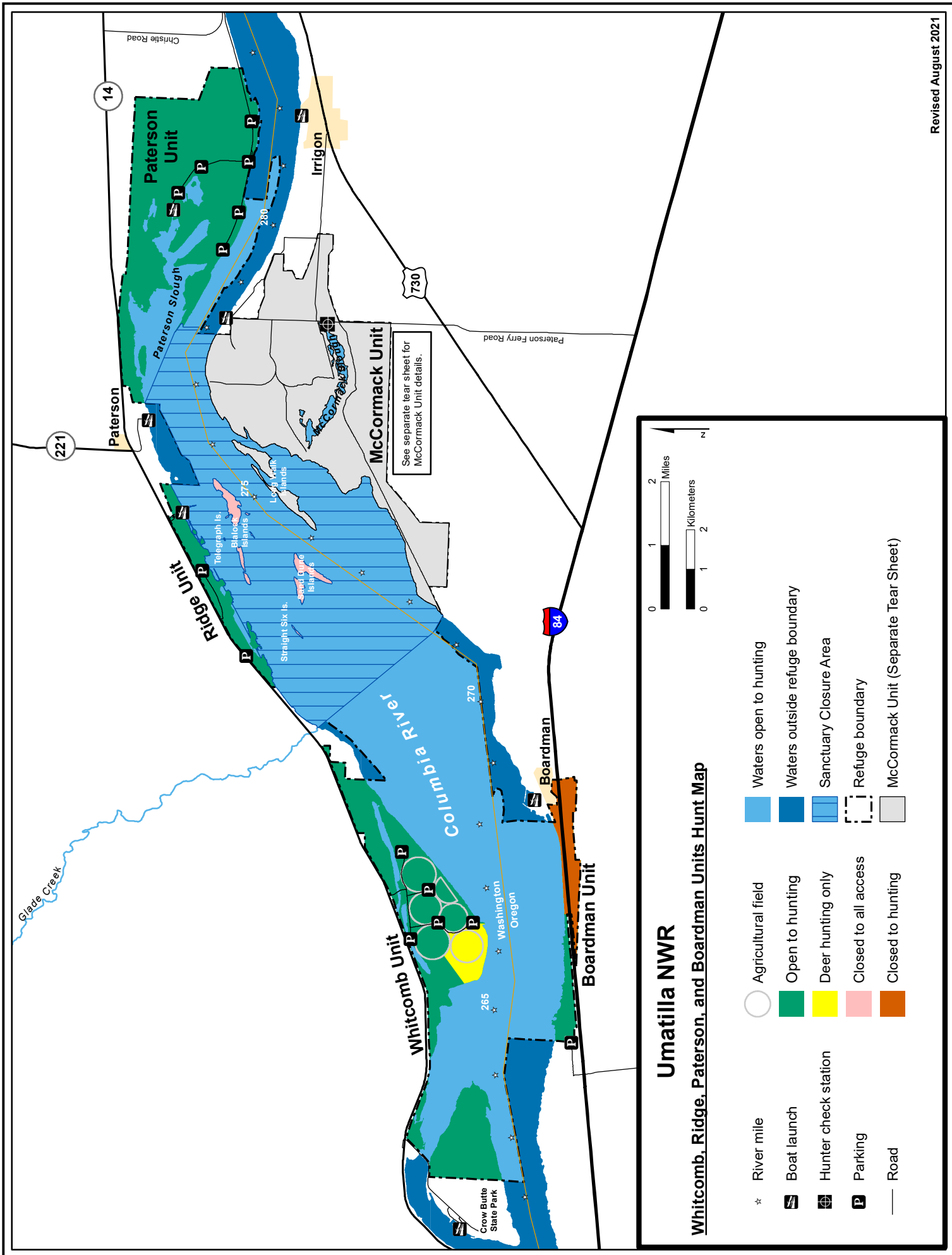
### Selected Prohibited Activities

- The use or possession of alcoholic beverages while hunting
- Baiting of any wildlife, trapping, or netting
- Fires
- Overnight camping or parking on the refuge
- Entering the refuge during closed hours (including by boat)
- Littering (including empty shotgun hulls)
- Commercial guiding for hunting
- Abandoning, discarding, or otherwise leaving personal property unattended
- Target shooting
- Discharging any firearm within one-quarter mile of any maintained building
- Falconry

### Contact Information

Umatilla National Wildlife Refuge  
c/o McNary National Wildlife Refuge  
64 Maple Street  
Burbank, WA 99323  
509/546-8300  
[www.fws.gov/refuge/umatilla/](http://www.fws.gov/refuge/umatilla/)

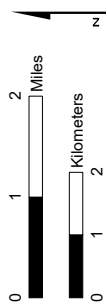
*Revised: August 2024*



### Umatilla NWR

Whitcomb, Ridge, Paterson, and Boardman Units Hunt Map

- ★ River mile
- 🚤 Boat launch
- 🔍 Hunter check station
- P Parking
- Road
- Agricultural field
- 🟢 Open to hunting
- 🟡 Deer hunting only
- 🟠 Closed to all access
- 🟤 Closed to hunting
- 🟦 Waters open to hunting
- 🟩 Waters outside refuge boundary
- 🟨 Sanctuary Closure Area
- ⬜ Refuge boundary
- 🟤 McCormack Unit (Separate Tear Sheet)



See separate tear sheet for McCormack Unit details.