

**U.S. Fish and Wildlife Service**

# **Assessment of Bull Trout Passage during Operation of the Imnaha River Weir**

*2018 Annual Progress Report*

---



**Paul M. Sankovich and Timothy A. Whitesel  
U.S. Fish and Wildlife Service  
Columbia River Fish & Wildlife Conservation Office  
Vancouver, WA 98683**

***On the cover:** Fluvial bull trout from the North Fork Imnaha River. Photograph by Justin R. Cook*

*The correct citation for this report is:*

Sankovich, P.M. and T.A. Whitesel. 2019. Assessment of Bull Trout Passage during Operation of the Imnaha River Weir. 2018 Annual Progress Report. U.S. Fish and Wildlife Service, Columbia River Fish & Wildlife Conservation Office, Vancouver, WA. 23 pp.

# Assessment of Bull Trout Passage during Operation of the Imnaha River Weir

## 2018 Annual Progress Report

*Work funded by*

U.S. Fish and Wildlife Service  
Lower Snake River Compensation Plan

*Conducted pursuant to*

Formal Section 7 Consultation  
FWS – 01EOFW00-2013-F-0174  
FWS – 01EOFW00-2015-F-0154

*and authored by*

Paul M. Sankovich<sup>1</sup>  
Timothy A. Whitesel<sup>2</sup>

U.S. Fish and Wildlife Service  
Columbia River Fish & Wildlife Conservation Office

<sup>1</sup> 3502 Highway 30  
La Grande, OR 97850

<sup>2</sup> 1211 SE Cardinal Court, Suite 100  
Vancouver, WA 98683

June 2019

## **Disclaimers**

The findings and conclusions in this report are those of the authors and do not necessarily represent the views of the U.S. Fish and Wildlife Service.

The mention of trade names or commercial products in this report does not constitute endorsement or recommendation for use by the federal government.

# Assessment of Bull Trout Passage during Operation of the Imnaha River Weir

## 2018 Annual Progress Report

Paul M. Sankovich and Timothy A. Whitesel

*U.S. Fish and Wildlife Service  
Columbia River Fish & Wildlife Conservation Office  
1211 SE Cardinal Court, Suite 100  
Vancouver, WA 98683*

*Abstract* – Bull Trout are listed across their entire range in the U.S. (coterminously) under the Endangered Species Act as a threatened species. A potential threat to Bull Trout that has recently received considerable attention is the operation of weirs and the resulting influence on Bull Trout migrations. Some Bull Trout in the Imnaha River Core Area migrate from the Snake or lower Imnaha rivers, past a weir operating to collect Chinook Salmon, to spawning areas in the upper Imnaha River. A team of biologists investigated whether the operation of the Imnaha River weir impacted (based on previously derived benchmarks) Bull Trout during their spawning migration. Marking of bull trout with individual unique Passive Integrated Transponder (PIT) tags and monitoring their detections at PIT tag arrays were used to monitor the migratory behavior of Bull Trout when the weir was in operation. The percentage of Bull Trout that passed the weir (conversion) was estimated to be 93.8%, higher than the yearly benchmark (76.5%) and the 4-year running average benchmark (92.9%) for conversion. Overall, the median time it took Bull Trout to move from just below to just above the weir was one day. The benchmarks for median delay in June and July (6 and 4 days, respectively) were met, whereas the benchmark for median delay in August (2 days) was not. However, only a small portion (3%) of the individuals included in the analysis passed through the study area in August. Maximum delay in June (16 days), July (12 days), and August (25 days) exceeded the benchmark for maximum delay (8 days). Thus, in 2018, the operation of the weir may have slowed the rate at which some Bull Trout moved past the weir during their spawning migration. Overall, Bull Trout passage at the weir improved relative to that in 2017, perhaps due at least partly to improved passage conditions in openings at the base of the weir designed to provide passage for resident fish, and to the modification of the design of the trap entrance.

*Page intentionally left blank*

## **Preface**

This report is intended to document annual work and activities associated with Bull Trout passing the weir, in the Imnaha River (Oregon), which is operated for the Chinook Salmon program of the Lower Snake River Compensation Program. This report is for the calendar year 2018. This report is generally technical in nature and, for context, references and discusses operations and benchmarks that were previously established by co-managers. This report is not a policy document and, while its contents may inform the process, is not for the direct purpose of establishing final policy.

## Introduction

Bull Trout (*Salvelinus confluentus*) are listed under the Endangered Species Act as a threatened species. Bull Trout were listed across their entire range in the U.S. (coterminously) on November 1, 1999 (see USFWS 2015a). Factors contributing to the listing of Bull Trout included range-wide declines in distribution, abundance and habitat quality. Land and water uses that alter or disrupt the habitat requirements of Bull Trout can be a threat to the persistence of bull trout. Commonly considered examples of such threats include dams, timber harvest, and nonnative fish (USFWS 2015a). A potential threat that has recently received considerable attention (for example, see Kelly Ringel 2014) is the operation of weirs and the resulting influence on Bull Trout migrations. The operation of weirs is prevalent throughout the part of the Columbia River basin that is accessible to anadromous fish.

The Mid-Columbia Recovery Unit (MCRU) is one component of the coterminous Distinct Population Segment (DPS). The MCRU has numerous core areas, one of which is the Imnaha Core Area (Figure 1). The Imnaha Core Area consists of at least five putative local populations of bull trout (Barrows et al. 2016). Spawning and early rearing for the Upper Imnaha Population is focused in the North Fork Imnaha River, South Fork Imnaha River, and the portion of the mainstem just below the confluence of these two forks (Buchanan et al. 1997). While the absolute number of Bull Trout that spawn likely varies between years, the majority of Bull Trout spawning in the Imnaha River occurs upstream of river kilometer (rkm) 80 (Sausen 2017), generally in headwater areas (ODFW 2005). Some bull trout from the Upper Imnaha Population express a fluvial life history, migrating between the spawning areas and lower Imnaha River or mainstem of the Snake River.

This investigation focused specifically on Bull Trout that had been tagged previously with passive integrated transponders (PIT) and were migrating from the Snake or lower Imnaha rivers to the spawning areas. The majority of this migration occurs between May and August. Bull Trout that move from the lower Imnaha River to their spawning area pass through the entire area where Chinook Salmon (*Oncorhynchus tshawytscha*) spawn. Chinook Salmon spawning in the Imnaha River includes hatchery- and natural- origin spawners. A weir to implement the Chinook Salmon hatchery program exists (see Hoffnagle 2005), below the headwater areas where Bull Trout are generally believed to spawn (Buchanan et al. 1997, ODFW 2005). The weir is permitted to operate from May 1 to October 1 per the Section 10 permit 18030, with the understanding that flow conditions actually control when installation and operation occurs. However, the weir generally operates from June or July into mid-September each year.



## **Project Goal**

To provide information that can be used to minimize the incidental take of ESA-listed Bull Trout in the Imnaha River during operation and management of the Imnaha River weir and acclimation site for brood collection of spring/summer Chinook Salmon.

## **Project Objectives**

1. During 2017-2020, assess the passage rate (conversion) of Bull Trout that is associated with the operation of the Imnaha River weir for collection and enumeration of adult spring/summer Chinook Salmon. Target benchmarks for conversion are an average across the four study years of at least 92.9% of PIT-tagged adults passing with no less than 76.5% in any given year (point estimates).
2. During 2017-2020, assess the migration delay (delay) of Bull Trout that is associated with the operation of the Imnaha River weir for collection and enumeration of adult spring/summer Chinook Salmon. Target benchmarks for delay (of Bull Trout that pass the weir) are median passage (between lower [IR4] and upper [IR5] antenna arrays) of no longer than 8 days for May, 6 days for June, 4 days for July and 2 days for August and September, with no individual taking longer than 8 days in any month.
3. Minimize and standardize impacts to Bull Trout during operation of the Imnaha River Weir through adaptive management during planned monitoring activities of passage and delay. This will be done through ongoing and continued discussions and coordination between the U.S. Fish & Wildlife Service (USFWS), National Oceanic & Atmospheric Administration (NOAA)-Fisheries, co-managers, and cooperators and may involve revising benchmarks, implementing operational changes or modification of structures.

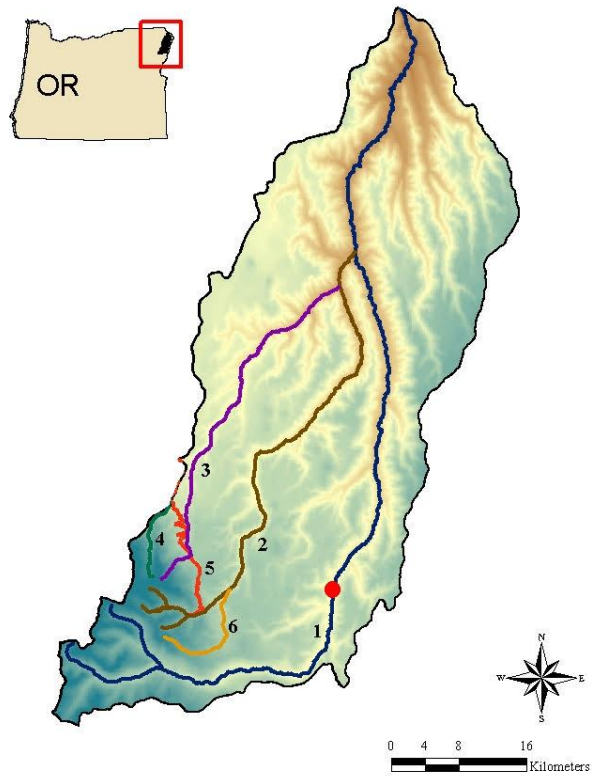


Figure 1. Local populations of Bull Trout in the Innaha River subbasin can be found in the Innaha River (1), Big Sheep Creek (2), McCully Creek (4) (currently a tributary to the Grande Ronde River subbasin), and Lick Creek (6); Bull Trout can also be found rearing in Little Sheep Creek (3), and the Wallowa Valley Improvement Canal (5). The Innaha River weir and acclimation site is identified (red dot).

## Endangered Species Act

Operation of the Imnaha River weir must result in acceptable and, ideally, minimal impacts to listed Bull Trout (USFWS 2016). Results from this investigation will be used to gauge weir impacts and inform weir operations in the Imnaha River and may also be used to help gauge impacts and inform operations in similar situations where weirs are operated. Specifically, this investigation addresses Terms and Conditions 2.1 and 3.1 within the USFWS Biological Opinion (USFWS 2016, also see USFWS 2015b) on the Imnaha River Satellite Facility Weir modification:

*(2.1) Within 6 months of the issuance of this opinion, a small group of subject matter experts will be convened, including representatives from the Service, ODFW, IPC, and the NPT, to develop and recommend a feasible sampling strategy for identifying the potential impacts from operation of the new weir and quantitatively evaluating bull trout movement past the Imnaha Satellite Facility when the weir is blocking the channel. It is expected that this strategy will capitalize on the large number of PIT- tagged bull trout in the river. The agreed-upon approach must be intensive enough to assess the duration of potential migration delays in the immediate vicinity of the weir.*

*Within one year of the date of the sampling strategy being finalized, the agreed-to sampling strategy will be implemented for a four year period. Data collected from this sampling effort will be shared with the La Grande Field Office and adaptive management procedures will be used to adjust weir operations, as needed, if serious migration problems are observed.*

*(3.1) Establish a monitoring program, in coordination with the La Grande Field Office and based on the sampling strategy described in Term and Condition 2.1, to evaluate bull trout passage and help assess incidental take from operation of the new weir. The monitoring program shall be intensive enough to identify any subadult or adult passage problems, should they be occurring. Adaptive management procedures will be used to adjust weir operations, as needed, if serious fish passage problems are identified through this monitoring program.*

## Study Area and Weir Operation

The Imnaha River Satellite Facility is located on the Imnaha River approximately 48 km south of the town of Imnaha, Oregon, near rkm 73. The facility is located on U.S. Forest Service (USFS) property. The Imnaha River Satellite Facility serves as the adult collection and juvenile acclimation and release facility for the Imnaha River spring/summer Chinook Salmon hatchery program within the USFWS-Lower Snake River Compensation Plan (LSRCP) Program. The existing facility was constructed in 1988 and is operated by the Oregon Department of Fish and Wildlife (ODFW) with assistance from the Nez Perce Tribe (NPT) through co-operative agreements with the LSRCP Office. Spawning, incubation and early rearing for this program occurs at Lookingglass Fish Hatchery, operated by ODFW. Lead management entities identified in the current 2008 – 2017 U.S. v. Oregon Management Agreement include the Nez Perce Tribe, Confederated Tribes of the Umatilla Indian Reservation (CTUIR) and ODFW.

From 1982 to 2015, a picket weir was installed for brood stock collection at the site with a target installation period in early to mid-May. The picket barriers required manual installation accomplished by workers wading into water that was often high and fast flowing, which led to precarious situations. Installation of the picket weir occurred anytime from late-May to late-July

when river flows subsided following the spring runoff. This often resulted in a significant portion of the spring/summer Chinook Salmon run passing the weir site before installation occurred and compromised management objectives and introduced concerns identified by NOAA-Fisheries for this ESA-listed population and corresponding hatchery program.

A new bridge-style weir and structure was completed in fall 2015 (Figure 2). Picket panels can be installed manually onto the structure from the bridge. The new weir can be operated under a wider range of river flows, and the need for workers to enter the river during potentially unsafe flows should be eliminated. This modification assists in meeting management objectives and addresses NOAA-Fisheries permitting and incidental take concerns regarding the Imnaha River spring/summer Chinook Salmon program.



Figure 2. Pictures of the new bridge-style weir installed at the Innaha River acclimation facility and brood collection ponds during October 2015. Weir panels are in the “down” position and pivot from the lower portion of the bridge to operate. Photos by USFWS – Lower Snake River Compensation Plan Office.



## Methods

Per the USFWS Biological Opinion, Bull Trout PIT-tagged as part of ongoing investigations by co-managers and cooperating agencies were used to address the objectives. During or prior to 2018, Idaho Power Company (IPC) biologists PIT-tagged Bull Trout captured in the Snake River, ODFW personnel PIT-tagged Bull Trout captured moving upstream at the weir during Chinook Salmon operations, and the Nez Perce Tribe (NPT) biologists PIT-tagged Bull Trout captured in a screw trap operated downstream of the town of Imnaha. Overall, each effort put tagged Bull Trout that may be observed for multiple years into the Imnaha River subbasin. We used detections of PIT-tagged Bull Trout that moved through the Imnaha River in 2018, specifically between PIT tag arrays located downstream (IR4) and upstream (IR5) of the Imnaha river weir (Figure 3) to achieve the objectives of the study. Detection histories for the PIT-tagged bull trout were evaluated to determine whether they exhibited a pattern reflective of the behavior of interest, Bull Trout migrating upstream past the weir site when the weir was operating (for example, detected during weir operation, not pre- or post-operation, detected moving upstream rather than only downstream, and tagged prior to capture at the weir in 2018).

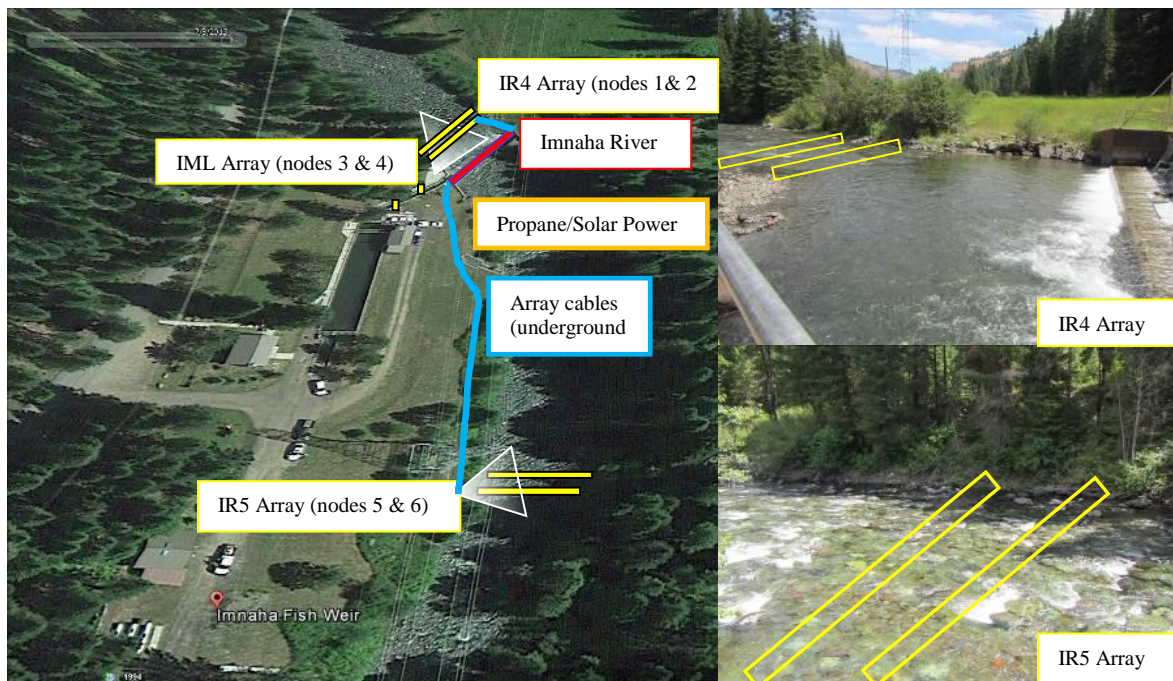


Figure 3. Location of the six Passive Integrated Transponder (PIT) tag detection arrays near the Imnaha River weir site. The IR4 array (nodes 1 [IR4B0, downstream] & 2 [IR4A0, upstream]), IR5 array (nodes 5 [IR5B0, downstream] & 6 [IR5A0, upstream]) are within the bankfull area of the Imnaha River. The IML array (nodes 3 & 4) is located in the adult ladder leading to the adult collection trap. Photos on the right show where the IR4 array (top right) and IR5 array (bottom right) are positioned and correspond to shaded triangles showing a perspective from the bank. The orange block is the location of the transceiver and power. All locations are approximations.

Objective 1. During 2018, assess the passage rate (conversion) of Bull Trout that is associated with the operation of the Imnaha River weir for collection and enumeration of adult spring/summer Chinook Salmon.

To address Objective 1, both during and after the Chinook Salmon spawning season, data on Bull Trout conversion were summarized, analyzed and disseminated to the subject matter experts from coordinating agencies for discussion during coordination calls. Relative to Objective 1, the *observed percent* of Bull Trout that passed the weir was calculated as:

$$a) ((IRS + IRT_D + IRT_U) / IR4) \times 100$$

Where  $IRS$  = the number of PIT-tagged Bull Trout that were not trapped, presumably got above the weir by swimming through or under weir panels, and were determined through detection histories to have passed upstream of IR5 (the PIT tag antenna array upstream of the weir);  $IRT_D$  = the number of PIT-tagged Bull Trout that were captured in the trap and released downstream from IR5;  $IRT_U$  = the number of PIT-tagged Bull Trout that were captured in the trap, transported and released upstream of IR5; and  $IR4$  = the number of uniquely PIT-tagged Bull Trout determined through detection histories to have reached IR4 (the PIT tag antenna array downstream of the weir). This approach was designed to calculate the *observed percent* (no expansions or adjustments) of tags passing the weir (conversion). Although detection efficiency was intended to be relatively high and similar at both IR4 and IR5, we also calculated the *expanded percent* of Bull Trout passing the weir (helping to avoid bias in calculations of conversion). This was done using a Lincoln-Petersen, mark-recapture approach (see Krebs 1999) to estimate the total number of PIT-tagged Bull Trout passing both IR4B0 (downstream node at IR4) and IR5B0 (downstream node at IR5) (Figure 3; nodes 1 and 5). The estimated total number ( $N$ ) of PIT-tagged Bull Trout passing a site of interest (e.g. IR5B0) was calculated as:

$$b) (C \times M) / R$$

Where  $C$  = the total number of unique Bull Trout PIT tag codes detected upstream of the site of interest;  $M$  = the total number of unique Bull Trout PIT tag codes detected moving upstream at the site of interest; and  $R$  = the total number of unique Bull Trout PIT tag codes that were detected moving upstream at, and upstream of, the site of interest. The *expanded percent* (based on the estimated total numbers) of tags passing the weir (conversion) was calculated as:

$$c) (N_{IR4B0} / N_{IR5B0}) \times 100$$

Where  $N_{IR4B0}$  = the estimated total number of PIT-tagged Bull Trout passing IR4B0 and  $N_{IR5B0}$  = the estimated total number of PIT-tagged Bull Trout passing IR5B0. Finally, some Bull Trout were also detected moving between IR4 and the ladder or trap, but not detected at IR5 (for example, a fish may have entered the trap only to exit it later and get detected again at IR4). It is possible that managers may be able to adjust operations so that these fish are trapped when they initially enter the ladder or trap (cannot or do not swim back out). If these fish then were released above the weir and migrated upstream past IR5, this would impact the estimated percent of Bull Trout passing the weir. Thus, we also calculated *expanded percent - possible* of Bull

Trout passing the weir by including the additional detections that would have been anticipated at IR5 after releasing these fish. To do this, we added the number of fish that entered the ladder or trap, but appeared based on their detection history to have remained below the weir, to the expanded number of Bull Trout detected at IR5. We then divided this sum by the expanded number of PIT-tagged Bull Trout that passed IR4 moving upstream during the study period.

Objective 2. During 2018, assess the migration delay (delay) of Bull Trout that is associated with the operation of the Imnaha River weir for collection and enumeration of adult spring/summer Chinook Salmon.

To address Objective 2, we also used PIT-tagged Bull Trout that moved through the Imnaha River. As in Objective 1, we specifically used tagged fish detected at or between the lower and upper PIT arrays (IR4 and IR5) during the trapping season. Development of the target delay benchmarks was also outlined in the monitoring proposal. Relative to Objective 2, the time (in days) for an individual Bull Trout to pass the weir site was calculated as:

- d)  $date_{IR5} - date_{IR4}$  (or)
- e)  $date_{trans} - date_{IR4}$

Where  $date_{IR5}$  = the Julian day a PIT-tagged Bull Trout was first detected at IR5;  $date_{IR4}$  = the Julian day a PIT-tagged Bull Trout was first detected at IR4;  $date_{trans}$  = the Julian day a PIT-tagged Bull Trout that had been captured at the weir facility was transported and released into the Imnaha River above IR5. Only Bull Trout that were detected at i) IR4 and IR5 or ii) IR4 and released above IR5 were used in this analysis. Median passage times (in days) for each month were calculated from individual passage times from equations b and c.

## Results

### Bull Trout

In 2018, the weir was installed on June 11, but the ladder and trap were not operational until June 12. The weir was removed on September 7. The PIT tag arrays below the weir and in the ladder were operational throughout the entire period the weir was in place. The PIT tag array above the weir was operational for all but June 12 and the morning and early afternoon of June 13. PIT tagged Bull Trout arriving below the weir between June 12 and September 6 were included in this evaluation. During that period, 111 uniquely PIT-tagged Bull Trout were detected moving upstream at IR4 based on their detection history (see Appendix A).

### Objective 1. Conversion

When calculating conversion, we considered all of the Bull Trout detected at IR4, in the ladder and trap, and at IR5 from June 12 to September 6. Of those fish, 111 had detection histories at IR4 that made them appropriate (e.g., they appeared to be moving upstream, not downstream) for calculating conversion. Three of the 111 fish remained below the weir throughout the study



period, 100 passed through openings in the weir and were detected at IR5, and eight were trapped and released into the trapping facility's release tube (i.e., below IR5). Of these eight fish, five were detected at IR5, one moved back downstream below the weir without being detected at IR5, and two were never detected after being handled at the trap. Six individuals that passed through the openings in the weir and were detected at IR5 subsequently moved back downstream below the weir before the spawning period began. For the purposes of calculating conversion, we considered these fish to have successfully passed through the project area. Thus, based on the *observed percent* ( $105 / 111$ ), the conversion rate from below the weir to above the weir was 94.1%. Ninety-one PIT-tagged bull trout were detected at IR4B0 (*M*), 91 of those were also detected upstream from IR4B0 (*R*), and a total of 112 were detected upstream from IR4B0 (*C*). Thus, 112 ( $((112 \times 91)/91)$ ) PIT-tagged bull trout were estimated to have moved upstream past IR4B0 ( $N_{IR4B0}$ ). Ninety-nine PIT-tagged bull trout were detected at IR5B0 (*M*), 93 of those were also detected upstream from IR5B0 (*R*), and a total of 99 were detected upstream from IR5B0 (*C*). Thus, 105 ( $((99 \times 99)/93)$ ) PIT-tagged bull trout were estimated to have moved upstream past IR5B0 ( $N_{IR5B0}$ ). Based on the *expanded percent* ( $105/112$ ), the conversion rate from below the weir to above the weir was 93.8%. Of the Bull Trout that entered the ladder ( $n = 11$ ), eight were trapped, two subsequently exited it, passed through the weir, and were detected at IR5, and one was not detected again. Had this latter fish been trapped and released above the weir the *expanded percent - possible* ( $((105 + 1)/112)$  would have been 94.6%. From these PIT tag detections, the detection efficiencies of IR4B0 and IR5B0 were estimated to be 81.3% and 93.9%, respectively.

## Objective 2. Delay

One hundred and two unique Bull Trout were detected at both IR4 and IR5 and had detection histories indicating they were suitable for calculating delay. Overall delay ranged from 0-25 days with a median of 1 day (Figure 4). Delay in June (based on 60 Bull Trout) ranged from 0-16 days with a median of 1 day. Delay in July (based on 32 Bull Trout) ranged from 0-12 days with a median of 1 day. Delay in August (based on three Bull Trout) ranged from 0-25 days with a median of 6 days.

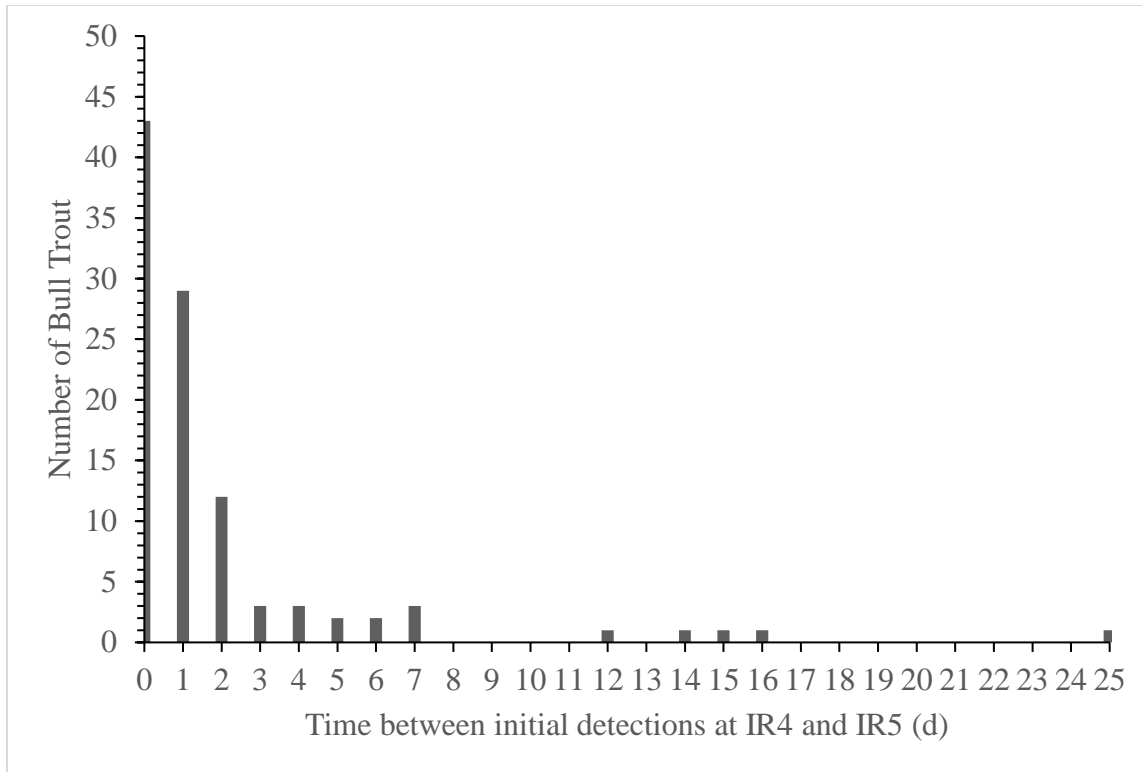


Figure 4. The number of days it took Bull Trout to move from IR4 to IR5. The number of days represents the time between the initial detection at IR4 and initial detection at IR5.

## Findings

In 2018, the operation of the weir allowed Bull Trout to meet the yearly benchmark for converting from below the weir to above the weir. This was evidenced by the 93.8% (expanded percent) conversion rate. The benchmark that has been established for an acceptable conversion is no less than 76.5% in a given year. The conversion rate in 2018 was above that benchmark and the benchmark for the 4-year running average (92.9%). Given the 2018 conversion rate, an average conversion rate of 92.7% for the 2019-2021 migration years would allow the 4-year running average to achieve the benchmark. Most (90.1%) Bull Trout that passed the weir appeared to do so through the existing chutes (purposeful holes in the weir). Only a small number of Bull Trout were detected in the ladder or trap. This pattern was quite different than that observed in 2017. This could have been at least partly a result of the openings in the weir being less obstructed in 2018 than in 2017. Modifications to the trap entrance also could have played a role, although to a lesser extent, since only 11 PIT-tagged Bull Trout entered the ladder in 2018. No Bull Trout shorter than 420 mm in total length (TL) were trapped (Figure 5). Otherwise, the measured or estimated TLs of Bull Trout passing through the study area via the trap versus the openings in the weir were similar. In addition, Bull Trout estimated to be longer than 600 mm TL apparently were able to pass through openings in the weir. Finally, in 2018 we estimated that 6.2% of the Bull Trout did not pass the weir. Given that Bull Trout are not believed to spawn in this area, it may be useful to explore why some do not pass the weir.

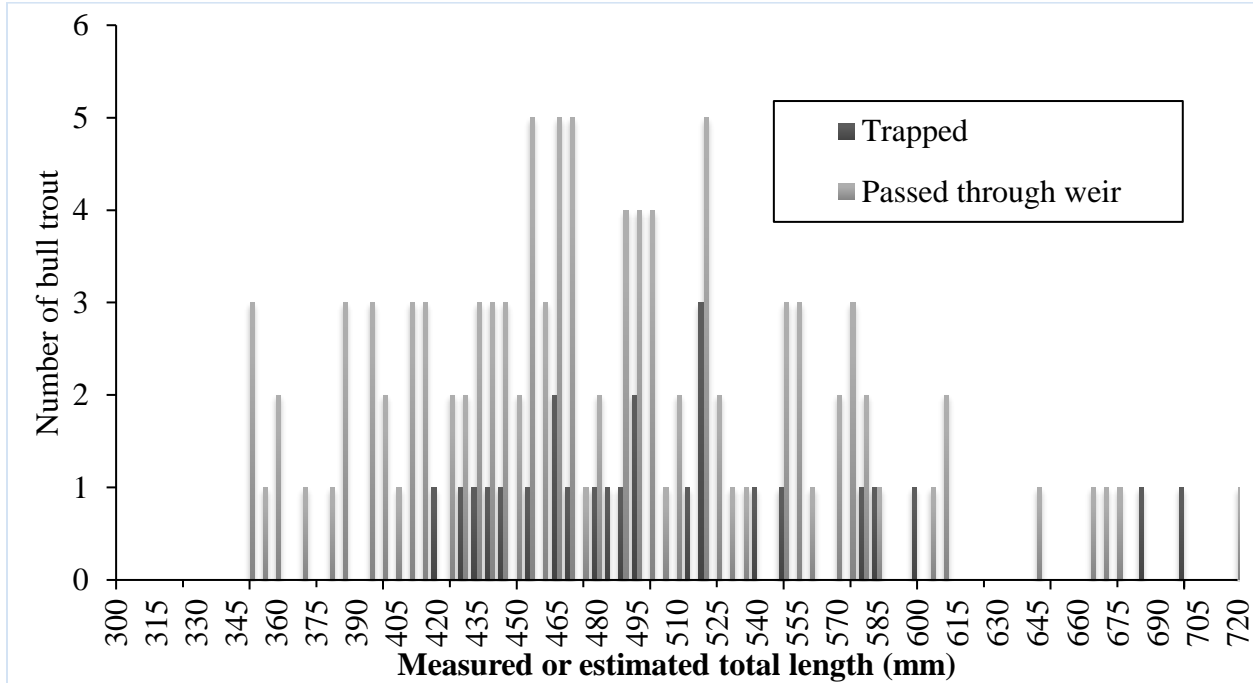


Figure 5. Length frequency distribution of Bull Trout that were trapped and released above or passed through the Imnaha River weir in 2018.

The vast majority of the PIT-tagged Bull Trout passed from IR4 to IR5 in a day or less in 2018 (Figure 4). Overall, the median travel time was 1 day, with a range of 0 to 25 days. In June, July, and August median travel times were 1 (maximum of 16), 1 (maximum of 12), and 6 (maximum of 25) days, respectively. The benchmarks for delay are median travel times of 6, 4, and 2 days (all with a maximum of 8 days) during June, July, and August, respectively. Thus, the benchmarks were achieved in June and July (when 97% of the fish in the analysis passed through the study area), but not in August. The improvement in delay in 2018 relative to that in 2017 may have been at least partly due to improved passage conditions from the openings in the weir and modification of the trap entrance. In 2018, travel between IR4 and IR5 exceeded 8, 6, 4, and 2 days for approximately 4.9%, 7.8%, 11.8% and 17.6% of the fish, respectively. Furthermore, in 2017 there were a number of Bull Trout that exceeded the maximum delay benchmark (8 days) for each month. It is possible that extended delay (> 8 days) is a normal behavior for a relatively small proportion of the fish that pass the section of river between IR4 and IR5. In the future, it may be useful to explore whether benchmarks for delay should be specific to periods other than monthly time intervals (e.g. two week intervals or intervals determined by flows). After all data are available for the 2017-2020 spawning years, it would also be prudent to revisit the benchmark for maximum delay.

The three openings in the weir that were designed to provide passage for smaller resident fish are at the base of the weir where the roughened portion of the apron is located. The openings are rectangular and each is approximately 30 cm long by 10 cm wide. Given these dimensions and the size of migratory adult bull trout, it is likely that some adults are too large to move through

the openings, and those that do must turn on their sides to do so. Whether adults that move through the openings are injured in the process is not known. Two signs in 2018 that suggested passage through these openings was not problematic to Bull Trout are that no adult mortalities washed up on the weir, and no live adults were observed holding for an extended period just upstream of the weir. Bull Trout passage through the weir versus through the trap may be a net benefit given it does not require the Bull Trout to be anesthetized, handled, potentially trucked to a release site, or be mixed with adult Chinook Salmon and other adult Bull Trout in the trap and braille that is de-watered as it is lifted up to the area where the fish are sorted for processing. In order to shed more light on whether this is actually the case, discussions were held with co-managers after the 2018 trapping season to identify a mean(s) of qualitatively assessing injury to Bull Trout passing through the weir openings. In 2019, video monitoring will occur during a portion of the trapping season to attempt to capture images of Bull Trout moving through the openings and the nature and extent of any struggles or injuries those Bull Trout experience.

This report represents one year of a multi-year investigation. The ability of Bull Trout to negotiate the Imnaha River weir in 2018 may reflect a number of variables that are not entirely clear at this point. For example, the behavior we observed by Bull Trout may be specific to the flow, temperature and Chinook Salmon conditions in the river in 2018. Furthermore, 2018 is only the second year data have been collected, and it is not yet possible to more fully consider annual variation in these metrics.

## **Acknowledgements**

We thank the Columbia River Fish & Wildlife Conservation Office for technical support of this work; the Lower Snake River Compensation Plan Office for funding this work and providing valuable coordination. We thank all those who improved this report through their review of earlier drafts. In particular, R. Engle, R. Kinzer and J. Feldhaus helped to develop the final report. We are also grateful to the numerous co-managers (Oregon Department of Fish and Wildlife, the U.S. Forest Service, the Nez Perce Tribe, Confederated Tribes of the Umatilla Indian Reservation, the National Marine Fisheries Service, and the Idaho Power Company) for their support of and participation in this work.

## Literature Cited

- Barrows, M.G., D.R. Anglin, P.M. Sankovich, J.M. Hudson, R.C. Koch, J.J. Skalicky, D.A. Wills, and B.P. Silver. 2016. Use of the mainstem Columbia and lower Snake rivers by migratory bull trout: data synthesis and analyses. U.S. Fish and Wildlife Service, Columbia River Program Office, Vancouver, Washington.
- Buchanan, D.V., M.L. Hanson and R.M. Hooton. 1997. Status of Oregon's Bull Trout. Oregon Department of Fish & Wildlife, Portland, Oregon.
- Hoffnagle, T., K.A. Frenyea, R.W. Carmichael and P. J. Keniry. 2005. A Comparison of Run Timing, Spawn Timing and Spawning Distribution of Natural and Hatchery spring Chinook Salmon *Oncorhynchus tshawytscha* in the Imnaha River, Oregon. ODFW Information Report 2005-03. Oregon Department of Fish & Wildlife, Salem, Oregon.
- Kelly Ringel, B. M., J. Neibauer, K. Fulmer, and M. C. Nelson. 2014. Migration patterns of adult bull trout in the Wenatchee River, Washington 2000-2004. U.S. Fish and Wildlife Service, Leavenworth, Washington. 81pp with separate appendices.
- Krebs, C. J. 1999. *Ecological Methodology*, 2nd Ed. Benjamin/Cummings. Menlo Park, California.
- ODFW. 2005. 2005 Oregon Native Fish Status Report Volume II Assessment Methods & Population Results. Oregon Department of Fish & Wildlife, Salem, Oregon.
- Sausen, G. 2017. 2016 Bull Trout redd monitoring in the Wallowa Mountains. Annual Report. U.S. Fish & Wildlife Service, La Grande, Oregon. 56 p.
- USFWS (U.S. Fish and Wildlife Service). 2015a. Recovery Plan for the Coterminous United States Population of Bull Trout (*Salvelinus confluentus*). U.S. Fish and Wildlife Service, Pacific Region, Portland, Oregon.
- USFWS (U.S. Fish and Wildlife Service). 2015b. Imnaha River Satellite Facility Weir Modification - Formal Section 7 Consultation (FWS reference 01EOW00-2013-F-0174). March 11, 2015. La Grande Field Office, La Grande, Oregon.
- USFWS (U.S. Fish and Wildlife Service). 2016. NOAA's Issuance of Section 10(a)(1)(A) Permits for the Continued Operation and Maintenance of the Northeast Oregon and Southeast Washington spring/summer Chinook, Steelhead, and Rainbow Trout Hatchery Programs funded under the Lower Snake River Compensation Plan and the Northwest Power Act. Formal Section 7 Consultation (FWS reference 01EOW00-2015-F-0154). August 22, 2016. Washington Fish and Wildlife Office, Eastern Washington Field Office, Spokane, Washington and La Grande Field Office, La Grande, Oregon

## Appendix A

Codes associated with PIT-tagged Bull Trout used in this analysis.

3DD.0077720D1C	3DD.00777246E2	3DD.0077753CD6	3DD.0077951E58
3DD.007772C6B1	3DD.0077724C44	3DD.007775434F	
3DD.007772CEE6	3DD.00777252A8	3DD.0077754417	
3DD.007772CFE4	3DD.0077725D55	3DD.0077754A45	
3D9.1C2D91220E	3DD.0077726807	3DD.00777550C3	
3D9.1C2D9140CF	3DD.00777268AE	3DD.00777565EE	
3D9.1C2D915A1B	3DD.007772721B	3DD.0077756E93	
3D9.1C2DE10CEE	3DD.007772860B	3DD.0077757286	
3D9.1C2DE16C44	3DD.0077729012	3DD.00777581DF	
3D9.1C2DE18911	3DD.0077729053	3DD.007775823C	
3D9.1C2DE1E28C	3DD.00777297ED	3DD.0077758F51	
3D9.1C2DE228FC	3DD.0077729C1E	3DD.007775A00D	
3D9.1C2DE23650	3DD.0077729F6A	3DD.007775A33E	
3D9.1C2DE24ABB	3DD.007772B56B	3DD.007775A3F3	
3D9.1C2DE255D5	3DD.007772B742	3DD.007775ACF7	
3D9.1C2DE27C79	3DD.007772BBC9	3DD.007775B54A	
3D9.1C2DE28B38	3DD.007772C75C	3DD.007775B7AB	
3D9.1C2DE29F31	3DD.007772C91B	3DD.007775B8B5	
3D9.1C2DE30BBB	3DD.007772DC60	3DD.007775B8C8	
3DD.00776F5863	3DD.007773201D	3DD.007775B9FA	
3DD.007771A6D8	3DD.0077736100	3DD.007775BAAA	
3DD.007771B968	3DD.0077736798	3DD.007775C27B	
3DD.007771BBB5	3DD.0077743335	3DD.007775C608	
3DD.007771C738	3DD.007774614E	3DD.007775CFB5	
3DD.007771D2CA	3DD.007774A8EA	3DD.007775D4CE	
3DD.007771E0C0	3DD.007774B1E8	3DD.007775EDC3	
3DD.007771E499	3DD.007774CB0A	3DD.007775F5BC	
3DD.007771F187	3DD.007774D017	3DD.0077911DF6	
3DD.0077720A5E	3DD.007774DB7E	3DD.00779224F5	
3DD.0077720E04	3DD.007774FEBE	3DD.0077938C7D	
3DD.00777213D5	3DD.007774FFE5	3DD.007793B1D7	
3DD.00777219D6	3DD.0077750322	3DD.0077943C19	
3DD.0077721EBF	3DD.00777504B8	3DD.0077944C50	
3DD.0077722AC8	3DD.0077750F11	3DD.0077946A48	
3DD.0077722F0A	3DD.0077750FB0	3DD.0077947F8C	
3DD.0077723173	3DD.0077751EC7	3DD.007794B655	
3DD.0077724666	3DD.0077752D63	3DD.007794D9E0	

**U.S. Fish and Wildlife Service  
Columbia River Fish & Wildlife Conservation Office  
1211 SE Cardinal Court, Suite 100  
Vancouver, WA 98683**



**June 2019**