

**2017 Post-Construction Bat  
Mortality Monitoring Report  
Wildcat Wind Farm**

**Madison and Tipton Counties,  
Indiana**

**Project #193704633**



Prepared for:  
Wildcat Wind Farm, LLC  
c/o E. ON Climate and Renewables  
353 N. Clark, 30th Floor  
Chicago, Illinois 60654

Prepared by:  
Stantec Consulting Services, Inc.  
2300 Swan Lake Boulevard Suite 202  
Independence, Iowa 50644

January 26, 2018

**2017 POST-CONSTRUCTION BAT MORTALITY MONITORING REPORT  
WILDCAT WIND FARM  
MADISON AND TIPTON COUNTIES, INDIANA**

**CERTIFICATION**

Under penalty of law, I certify that, to the best of my knowledge, after appropriate inquiries of all relevant persons involved in the preparation of this report, the information submitted is true, accurate and complete in all material respects.

Signature: 

Name: BRADFORD H. KING

Title: VP, MIDWEST/NORTHEAST DEVELOPMENT

**2017 POST-CONSTRUCTION BAT MORTALITY MONITORING REPORT  
WILDCAT WIND FARM  
MADISON AND TIPTON COUNTIES, INDIANA**

**Table of Contents**

**1.0 INTRODUCTION ..... 4**

1.1 PROJECT DESCRIPTION AND HISTORY ..... 4

1.2 PURPOSE AND OBJECTIVES OF THE STUDY ..... 6

**2.0 METHODS..... 6**

2.1 MORTALITY STUDY..... 6

    2.1.1 Sample Size..... 6

    2.1.2 Survey Plot Size ..... 6

    2.1.3 Survey Schedule ..... 7

    2.1.4 Carcass Surveys ..... 7

    2.1.5 Species Identification..... 8

2.2 SEARCHER EFFICIENCY TRIALS ..... 8

2.3 CARCASS REMOVAL TRIALS..... 9

2.4 STATISTICAL METHODS FOR MORTALITY ESTIMATES ..... 9

    2.4.1 Mean Observed Number of Casualties (c) ..... 10

    2.4.2 Estimation of Searcher Efficiency (p) ..... 10

    2.4.3 Estimation of Carcass Removal (t) ..... 10

    2.4.4 Estimation of the Probability of Carcass Availability and  
Detection ( $\pi$ )..... 11

    2.4.5 Area Adjustment (A) ..... 11

    2.4.6 Estimation of Facility-Related Mortality (m) ..... 12

2.5 TAKE ESTIMATION FOR COVERED SPECIES ..... 12

**3.0 RESULTS ..... 13**

3.1 SUMMARY OF SURVEYS ..... 13

    3.1.1 Species Composition ..... 14

    3.1.2 Age and Sex..... 15

    3.1.3 Temporal Patterns..... 15

    3.1.4 Spatial Patterns ..... 17

3.2 SEARCHER EFFICIENCY TRIALS ..... 18

3.3 CARCASS REMOVAL TRIALS..... 19

3.4 PROBABILITY OF CARCASS AVAILABILITY AND DETECTION..... 20

3.5 ADJUSTED MORTALITY ESTIMATES ..... 21

    3.5.1 Spring..... 21

    3.5.2 Fall..... 22

3.6 INCIDENTAL FINDS ..... 22

    3.6.1 Bats ..... 22

    3.6.2 Birds..... 23

3.7 ESTIMATED TAKE OF INDIANA BATS AND NORTHERN LONG-EARED BATS ..... 24

**4.0 SUMMARY AND CONCLUSIONS ..... 25**

4.1 SUMMARY ..... 25

4.2 COMPARISON TO PREVIOUS STUDIES ..... 25

**2017 POST-CONSTRUCTION BAT MORTALITY MONITORING REPORT  
WILDCAT WIND FARM  
MADISON AND TIPTON COUNTIES, INDIANA**

4.2.1 Spring Migration Season ..... 26  
4.2.2 Fall Migration Season ..... 26  
4.3 CONCLUSIONS ..... 27  
**5.0 LITERATURE CITED ..... 27**

**LIST OF TABLES**

Table 1. Summary of standardized surveys during the 2017 post-construction monitoring study at the Wildcat Wind Farm, Tipton and Madison counties, Indiana. .... 13  
Table 2. Summary of all bat carcasses found incidentally and during standardized carcass survey during the 2017 post-construction monitoring study at the Wildcat Wind Farm, Tipton and Madison counties, Indiana. .... 14  
Table 3. Sex and age of bat carcasses found during standardized surveys (fall numbers presented in the table, with spring numbers in parenthesis) for the 2017 post-construction monitoring study at the Wildcat Wind Farm, Tipton and Madison counties, Indiana. Ages include adults (A), juveniles (J) and unknown (U). .... 15  
Table 4. Searcher efficiency by season (Spring: 3 April to 18 May and Fall: 31 July to 12 October), search type (full 80-m x 80-m plots or roads and pads), and searcher for the 2017 post-construction monitoring study at the Wildcat Wind Farm, Tipton and Madison counties, Indiana. .... 19  
Table 5. Carcass removal by season (Spring: 3 April to 18 May and Fall: 31 July to 12 October) during the 2017 post-construction monitoring study at the Wildcat Wind Farm, Tipton and Madison counties, Indiana. .... 20  
Table 6. Carcass availability and detection by season (Spring: 3 April to 18 May and Fall: 31 July to 12 October), search type (full 80x80m plots or roads and pads), and searcher for the 2017 post-construction monitoring study at the Wildcat Wind Farm, Tipton and Madison counties, Indiana. .... 20  
Table 7. Bat mortality estimates for the spring 2017 post-construction monitoring study at the Wildcat Wind Farm, Tipton and Madison counties, Indiana. The Project was operating at a cut-in speed of 3.5 m/s during this time period. .... 21  
Table 8. Bat mortality estimates for the fall 2017 post-construction monitoring study at the Wildcat Wind Farm, Tipton and Madison counties, Indiana. The project was operating at a cut-in speed of 5.0 m/s during this period. .... 22  
Table 9. Sex and age of incidental bat carcasses found during the 2017 post-construction monitoring study at the Wildcat Wind Farm, Tipton and Madison counties, Indiana. .... 23  
Table 10. Summary of bird carcasses found during the 2017 post-construction monitoring study (3 April to 18 May and July 31 to 12 October) at the Wildcat Wind Farm, Tipton and Madison counties, Indiana. .... 23  
Table 11. Bat mortality estimates by year for the spring migratory period (1 April–15 May) at the Wildcat Wind Farm, Tipton and Madison counties, Indiana. .... 26  
Table 12. Bat mortality estimates by year for the fall migratory period (1 August–15 October) at the Wildcat Wind Farm, Tipton and Madison counties, Indiana. .... 27

**2017 POST-CONSTRUCTION BAT MORTALITY MONITORING REPORT  
WILDCAT WIND FARM  
MADISON AND TIPTON COUNTIES, INDIANA**

**LIST OF FIGURES**

Figure 1. Project Location and Survey Locations ..... 5  
Figure 2. Bat carcasses found by week during the spring season of standardized surveys during the 2017 post-construction monitoring study (3 April- 18 May) at the Wildcat Wind Farm, Tipton and Madison counties, Indiana. .... 16  
Figure 3. Bat carcasses found by week during the fall season of standardized surveys during the 2017 post-construction monitoring study (31 July through 12 October) at the Wildcat Wind Farm, Tipton and Madison counties, Indiana..... 17

**LIST OF APPENDICES**

APPENDIX A SAMPLE DATA SHEETS  
APPENDIX B REPRESENTATIVE CARCASS PHOTOS

**2017 POST-CONSTRUCTION BAT MORTALITY MONITORING REPORT  
WILDCAT WIND FARM  
MADISON AND TIPTON COUNTIES, INDIANA**

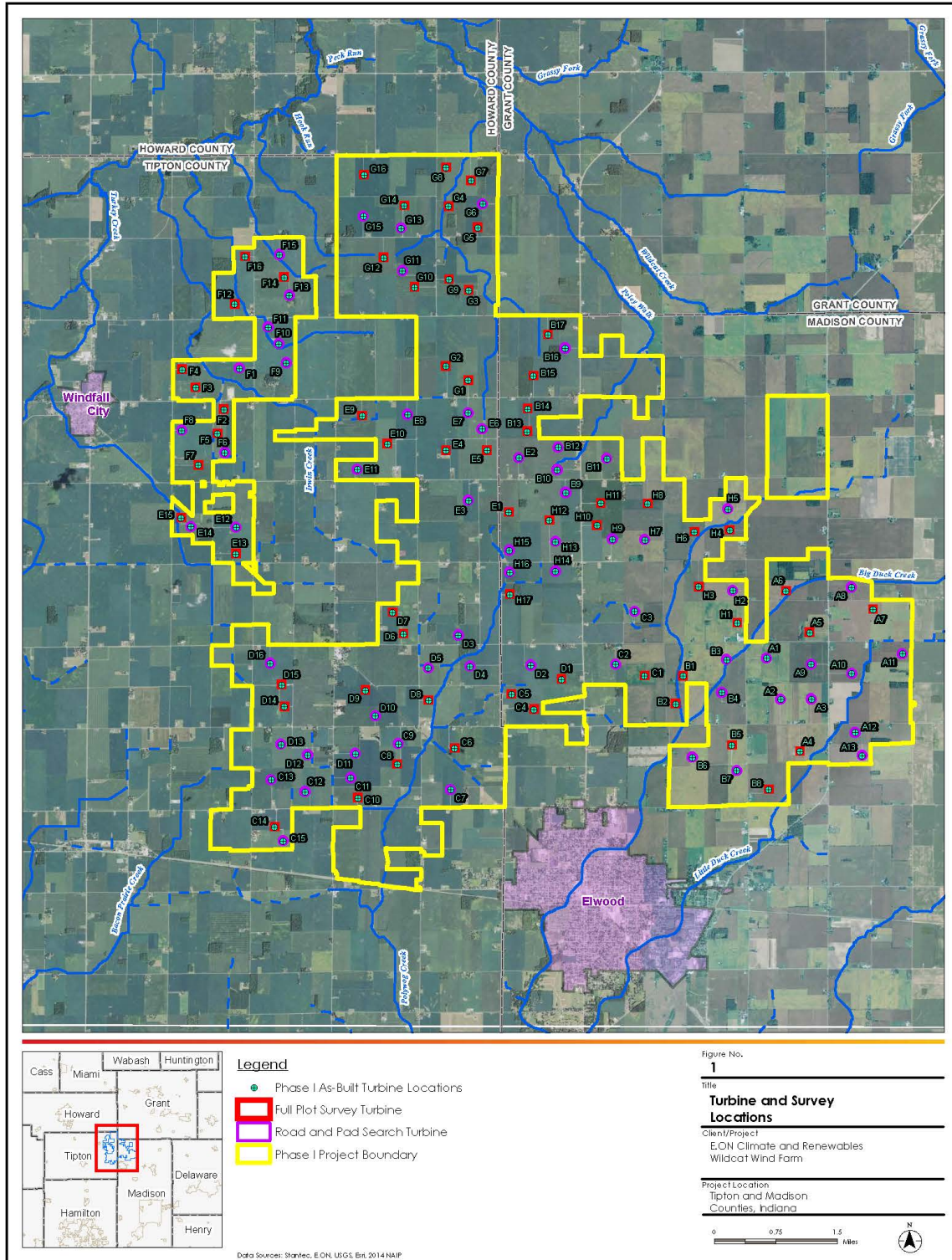
## **1.0 Introduction**

### **1.1 PROJECT DESCRIPTION AND HISTORY**

The Wildcat Wind Farm (Project or Wildcat) developed by Wildcat Wind Farm I, LLC (WWF) is located in Madison and Tipton counties, north of the town of Elwood, Indiana. The Project consists of 125 GE 1.6 megawatt (MW) wind turbine generators and associated access roads and collector line system for a total capacity of 200 MW (Figure 1). The Project is located on lands leased from private landowners who continue their pre-wind farm use of the land. Land use in the area is predominantly agricultural.

Wildcat is located within the range of both the federally endangered Indiana bat (*Myotis sodalis*) and federally threatened northern long-eared bat (*Myotis septentrionalis*). On 19 August 2016, the Project obtained an Incidental Take Permit (ITP) from the United States Fish and Wildlife Service (USFWS), allowing operations under the terms of the Project's Habitat Conservation Plan (HCP), which covers the Indiana bat and northern long-eared bat (covered species), requires curtailing of turbines to 5.0 meters/second (m/s) during the fall migration period (1 August–15 October), and outlines the requirements for post-construction monitoring to ensure permit compliance. The ITP authorizes the take of 162 Indiana bats and 81 northern long-eared bats over the 27 years of project operations, or an average of 6 Indiana bats and 3 northern long-eared bats per year. This is the fifth year of monitoring at the Project, and the results of previous monitoring are outlined in Section 4.2.

**2017 POST-CONSTRUCTION BAT MORTALITY MONITORING REPORT  
 WILDCAT WIND FARM  
 MADISON AND TIPTON COUNTIES, INDIANA**



**2017 POST-CONSTRUCTION BAT MORTALITY MONITORING REPORT  
WILDCAT WIND FARM  
MADISON AND TIPTON COUNTIES, INDIANA**

**1.2 PURPOSE AND OBJECTIVES OF THE STUDY**

Spring and fall monitoring were conducted as part of the baseline monitoring process under the HCP post-construction monitoring plan to:

1. Provide a means of monitoring and ensuring the Project's compliance with the take limits authorized in the ITP
2. Assess the effectiveness of the HCP in meeting the biological objective of minimizing direct mortality of Indiana and northern long-eared bats

**2.0 Methods**

Both the spring and fall studies included the following components:

1. Standardized carcass surveys to systematically search plots at all turbines for bat casualties attributable to the turbines
2. Searcher efficiency trials to estimate the percentage of bat casualties that were found by the searcher(s)
3. Carcass removal trials to estimate the persistence time of carcasses on-site before scavengers removed them

**2.1 MORTALITY STUDY**

Carcass surveys were conducted in spring (3 April-18 May) and fall (31 July -12 October) during the 2017 year of Project operation. The Project was operating under the following conditions:

1. Spring (1 April-15 May): 3.5 m/s cut-in speed (manufacturer's cut-in speed)
2. Fall (1 August-15 October): 5.0 m/s cut-in speed

**2.1.1 Sample Size**

Post-construction monitoring was conducted at 100% of the turbines. This study design provides full coverage of the facility and will serve as a control to which subsequent monitoring results can be compared.

**2.1.2 Survey Plot Size**

During the spring and fall seasons, surveys consisted of searching roads and pads (out to 262 feet (ft) (80 meters [m]) at 50% of the turbines (n=63), and cleared plots (262-ft x 262-ft (80-m x 80-m) centered around each turbine) using a full-coverage transect method at the remaining 50% (n=62). This hybrid approach targets the areas shown to support the highest searcher efficiency while greatly reducing the financial and logistical constraints associated with clearing and searching large study plots, enabling much broader coverage of the facility.



# **2017 POST-CONSTRUCTION BAT MORTALITY MONITORING REPORT**

## **WILDCAT WIND FARM**

### **MADISON AND TIPTON COUNTIES, INDIANA**

Previous post-construction studies have indicated that the majority of bat carcasses typically fall within 100 ft (30 m) of the turbine or within 50% of the maximum height of the turbine (Kerns and Kerlinger 2004, Arnett et al. 2005, Young et al. 2009, Jain et al. 2007, Piorkowski and O'Connell 2010, USFWS 2012). The plot size used for this study exceeds one-half the maximum turbine rotor height of the Project turbines (246 ft [75 m]). The subset of full-coverage plots in the fall provided a reference for estimating the number of fatalities which may have fallen outside of the search area at the road and pad search turbines. This mixed sampling method is consistent with other post-construction monitoring studies being conducted (e.g., Good et al. 2011) and will enable comparison of study results.

#### **2.1.3 Survey Schedule**

The search interval for spring surveys at all turbines was once weekly. An individual turbine was searched on the same day each week when conditions allowed. Within a day, the turbine search schedule and order were randomized, so that each turbine's search plot was sampled at different periods throughout the day. A weekly search interval for fatality monitoring was deemed adequate by Kunz et al. (2007), and other studies have demonstrated that a weekly search interval provides effective mortality monitoring and adequately estimates impacts from wind energy facilities (Gruver et al. 2009, Young et al. 2009), such that the added effort associated with more frequent intervals is not warranted. In addition, previous spring surveys over the past four years at the site have demonstrated a minimum carcass persistence of at least seven days on roads and pads.

For the fall surveys, all turbines were searched twice weekly, with approximately three to four days between surveys when conditions allowed. This change was implemented based on the 2014 and 2015 fall monitoring results, which indicated a carcass persistence of less than seven days on roads and pads during fall surveys. In 2016, the mean carcass persistence for fall monitoring resulted in 9.3 days for full plots and 7.3 days for roads and pads, but given the two previous years' results, a twice weekly search interval was maintained for 2017.

Prior to the fall monitoring period, all search plots (roads and pads, full plots) were cleared of carcasses the last week of July ("fall sweep"), and all bats found that week were coded as incidental finds, as they were not found during either the spring or fall monitoring periods.

#### **2.1.4 Carcass Surveys**

Carcass surveys were conducted by searchers experienced and/or trained in fatality search methods, including proper handling and reporting of carcasses. Searchers were familiar with and able to accurately identify bat species likely to be found in the project area, and photos of any unknown bat discovered were sent to a permitted bat biologist for positive identification, and carcasses were kept on-site. During surveys, searchers walked at a rate of approximately 2 miles per hour (mph) (45 to 60 m per minute) while searching 10 ft (3 m) on either side of each transect.

# **2017 POST-CONSTRUCTION BAT MORTALITY MONITORING REPORT**

## **WILDCAT WIND FARM**

### **MADISON AND TIPTON COUNTIES, INDIANA**

For each carcass found, the following data were recorded (a sample data form is included in Appendix A):

- Date and time
- Initial species identification
- Sex, age, and reproductive condition (when possible)
- Global positioning system (GPS) location
- Distance and bearing to turbine
- Substrate/ground cover conditions
- Condition (intact, scavenged, decomposed)
- Any notes on presumed cause of death

A digital photograph of each carcass found was taken before the carcass was handled and removed. Representative digital photographs are included in Appendix B. All carcasses were labeled with a unique number, bagged, and stored in a freezer (with a copy of the original data sheet) at the Project Operations and Maintenance Building. Bat carcasses were collected and retained under Indiana Department of Natural Resources Special Purpose Salvage Permit No. 17-019.

Bat carcasses found in non-search areas and any bird carcasses found were coded as incidental finds, and documented in a similar fashion to those found in standardized surveys when possible. This included carcasses found during non-search times and carcasses found during the fall sweep the week prior to the fall monitoring period when all survey plots were searched for any carcasses that had occurred between the spring and fall monitoring periods. Maintenance personnel were informed of the standardized surveys, and were trained in collision event reporting protocol in the case of an incidental find. Bird carcasses were photographed and documented, but not collected and left as found. Incidental bat carcasses were collected and stored in the freezer with the carcasses found during standardized surveys. Incidental finds were not included in the mortality estimates.

#### **2.1.5 Species Identification**

Preliminary bird and bat species identifications were made in the field by qualified staff. When carcass condition allowed, sex, age, and reproductive condition of the carcass were recorded. For bat carcasses, forearm length was recorded to facilitate species identification. Any unknown bat, or potential Indiana or northern long-eared bat, was identified by a permitted bat biologist. In addition to the carcass, photographs and data collected for each carcass were used to verify the species identification.

## **2.2 SEARCHER EFFICIENCY TRIALS**

Searcher efficiency trials were used to estimate the probability of bat carcass detection by the searchers. A total of four searcher efficiency trials were conducted: one during the spring and three during the fall monitoring period (one for each searcher who conducted surveys). Searchers did not know when during the monitoring periods the trials were being conducted, at which

# **2017 POST-CONSTRUCTION BAT MORTALITY MONITORING REPORT**

## **WILDCAT WIND FARM**

### **MADISON AND TIPTON COUNTIES, INDIANA**

turbines trial carcasses were placed, or the location or number of trial carcasses placed in any given search plot. Commercially-available brown mouse carcasses were used as trial carcasses to represent bats.

All searcher efficiency trial carcasses were randomly placed by the field lead within the search plots. These were placed the morning prior to the planned carcass surveys for that day. The number of trial carcasses found by searchers during the mortality surveys in each plot was recorded and compared to the total number of trial carcasses placed in the plot and not scavenged prior to the mortality search. A sample data form is included in Appendix A.

### **2.3 CARCASS REMOVAL TRIALS**

Carcass removal trials were conducted to estimate the average length of time carcasses remained in the search plots (i.e., were available to find) before being removed by scavengers. Carcass removal trials were conducted following the searcher efficiency trials; one during the spring and one during the fall monitoring periods. Mouse carcasses used during the searcher efficiency trials were left in place and their locations were discretely marked. Searchers monitored the trial carcasses over a period of up to 30 days. During each carcass removal trial, carcasses were checked every day for the first week, and then on days 10, 14, 20 and 30.

The condition of each carcass was recorded during each trial check. The conditions recorded were defined as follows:

- Intact – complete carcass with no body parts missing
- Scavenged – carcass with some evidence or signs of scavenging
- Fur spot – no carcass, but fur spot remaining
- Missing – no carcass or fur remaining

A sample data form is included in Appendix A. Any carcasses remaining at the end of the 30-day trial period were removed from the field.

### **2.4 STATISTICAL METHODS FOR MORTALITY ESTIMATES**

In an effort to make results comparable with other post-construction mortality studies, the method used to calculate the mortality estimates largely follows the estimator proposed by Erickson et al. (2003), as modified by Young et al. (2009). The estimate of the total number of turbine-related casualties was based on three components: (1) observed number of casualties, (2) searcher efficiency, and (3) carcass removal rates. The 90% confidence intervals were calculated using bootstrapping methods (Erickson et al. 2003 and Manly 1997 as presented in Young et al. 2009).

**2017 POST-CONSTRUCTION BAT MORTALITY MONITORING REPORT  
WILDCAT WIND FARM  
MADISON AND TIPTON COUNTIES, INDIANA**

**2.4.1 Mean Observed Number of Casualties (c)**

The estimated mean observed number of casualties (c) per turbine per monitoring period was calculated as:

$$c = \frac{\sum_{j=1}^n c_j}{n}$$

where n is the number of turbines searched, and c<sub>j</sub> is the number of casualties found during mortality searches. Incidental carcass finds (those found outside of the surveyed areas or at times other than during mortality surveys) were not included in this calculation, or in the estimated fatality rate. Mean number of observed casualties was calculated separately for each survey type (roads and pads, full plots) and each survey period.

**2.4.2 Estimation of Searcher Efficiency (p)**

Searcher efficiency (p) represents the average probability that a carcass was detected by surveyors. The searcher efficiency rate was calculated by dividing the number of trial carcasses observers found by the total number which remained available during the trial (non-scavenged). Searcher efficiency was calculated separately for each search type (roads and pads, full plots), searcher, and season.

**2.4.3 Estimation of Carcass Removal (t)**

Carcass removal rates were estimated to adjust the observed number of casualties to account for scavenger activity at the site. Mean carcass removal time (t) represents the average length of time a trial carcass remained at the site before it was removed by scavengers. Mean carcass removal time was calculated as:

$$t = \frac{\sum_{i=1}^S t_i}{S - S_c}$$

where s is the number of carcasses placed in the carcass removal trials and s<sub>c</sub> is the number of carcasses remaining at day 30. This estimator is the maximum likelihood (conservative) estimator assuming the removal times follow an exponential distribution, and there is right-censoring of the data. Any trial carcasses remaining after 30 days were collected, yielding censored observations at 30 days. Carcass removal rates were calculated separately for each survey type (roads and pads, full plots) and season.

**2017 POST-CONSTRUCTION BAT MORTALITY MONITORING REPORT  
WILDCAT WIND FARM  
MADISON AND TIPTON COUNTIES, INDIANA**

**2.4.4 Estimation of the Probability of Carcass Availability and Detection ( $\pi$ )**

Searcher efficiency and carcass removal rates were combined to represent the overall probability ( $\pi$ ) that a casualty incurred at a turbine was reflected in the mortality survey results. This probability was calculated as:

$$\pi = \frac{t \cdot p}{I} \cdot \left[ \frac{\exp(I/t) - 1}{\exp(I/t) - 1 + p} \right]$$

where I is the interval between searches. The estimation of the probability of carcass availability and detection was calculated separately for each survey type (roads and pads, full plots), searcher, and season. For the fall searches, there were three estimations of the probability of carcass availability and detection due to the use of three searchers. For this season, the numbers were averaged for each plot type using a weighted average based on the search effort of each searcher as:

$$\pi_{RP} = (0.5 * \pi_{RP1}) + (0.25 * \pi_{RP2}) + (0.25 * \pi_{RP3})$$

$$\pi_{FP} = (0.5 * \pi_{FP1}) + (0.25 * \pi_{FP2}) + (0.25 * \pi_{FP3})$$

The number was then averaged for each season using a weighted average as:

$$\pi = (0.5 * \pi_{RP}) + (0.5 * \pi_{FP})$$

**2.4.5 Area Adjustment (A)**

Approximation of A, the adjustment for areas which were not surveyed, was calculated following methods and data collected during post-construction monitoring studies at Fowler Ridge Wind Farm in Indiana (Good et al. 2011). For this study, A was calculated to represent the adjustment for the proportion of carcasses which likely fell outside of the area surveyed at all studied turbines.

The value for A was approximated using the following equation:

$$A = \frac{\frac{C_{RP}}{\pi_{RP} * S_{RP}} + \frac{C_{FP}}{\pi_{FP} * S_{FP}}}{\frac{C_{RP}}{\pi_{RP}} + \frac{C_{FP}}{\pi_{FP}}} * A_{FP}$$

where  $C_{RP}$  is the number of observed casualties on roads and pads,  $C_{FP}$  is the number of observed casualties on full plots,  $\pi_{RP}$  is the probability of carcass availability and detection on roads and pads,  $\pi_{FP}$  is the probability of carcass availability and detection on full plots,  $S_{RP}$  is the proportion of roads and pads surveyed across all study turbines,  $S_{FP}$  is the proportion of full plots searched across all study turbines, and  $A_{FP}$  was set at 1.305. This is equal to the correction factor calculated for the Fowler study, where it was estimated that 23.4% of fatalities fall outside of an 80-m x 80-m square plot (Good et al. 2011). For this study,  $S_{RP} = 0.5$  and  $S_{FP} = 0.5$ , as only roads and pads will be surveyed at approximately 50% of the study turbines and full plot surveys will be conducted at the

**2017 POST-CONSTRUCTION BAT MORTALITY MONITORING REPORT  
WILDCAT WIND FARM  
MADISON AND TIPTON COUNTIES, INDIANA**

remaining 50% of the study turbines. This number was calculated separately for the spring and fall periods.

**2.4.6 Estimation of Facility-Related Mortality (m)**

Mortality estimates were calculated using the estimator proposed by Erickson et al. (2003), as modified by Young et al. (2009). The estimated mean number of bat casualties/turbine/monitoring period ( $m$ ) was calculated by dividing the mean observed number of bat casualties/turbine/monitoring period ( $c$ ) by  $\pi$ , an estimate of the probability a carcass was not removed by scavengers and was detected by surveyors, and then multiplying by  $A$ , the adjustment for the area within which bats may have fallen but which was not surveyed.

$$m = A * \frac{c}{\pi}$$

Where  $A$  is the area adjustment,  $C$  is the number of carcasses found per turbine, and  $\pi$  is the probability of carcass detection and availability. This equation used the weighted average for the probability of carcass availability and detection based on approximately 50% of surveys being roads and pads and 50% of surveys being full plots, while the area adjustment and mean observed number of casualties was facility-wide.

**2.5 TAKE ESTIMATION FOR COVERED SPECIES**

The Evidence of Absence (EOA) software developed by Dalthorp et al. (2014) was used to estimate the probability of detection ( $g$ ). This value represents the probability of detecting a carcass of either covered species that occurs at the site based on the post-construction monitoring effort performed that season. For 2017, this was applied only to the period between 1 August and 12 October, when take of the covered species was expected to occur (if at all).

The estimate of the overall probability of detection ( $g$ ) is a function of several factors, including carcass persistence, searcher efficiency, area adjustment, search interval, and other factors (Dalthorp et al. 2014). These bias correction factors were calculated utilizing the methods described in Section 2.4, and input into the EOA model to calculate a probability of detection ( $g$ ). The HCP set a goal of having a detection probability ( $g$ ) between 0.25 and 0.30 during baseline monitoring.

Then, utilizing the EOA "Multi-Year Total" tool, the probability of detection ( $g$ ) and the number of covered carcasses found ( $X$ ) are input to determine, with a certain degree of confidence, that the number of fatalities of a covered species did not exceed the cumulative total authorized take, and to calculate the annual take rate. These estimates (cumulative total take and average annual take rate) are then used to determine whether any of the following three adaptive management triggers outlined in the Project's HCP have been triggered:

**2017 POST-CONSTRUCTION BAT MORTALITY MONITORING REPORT  
WILDCAT WIND FARM  
MADISON AND TIPTON COUNTIES, INDIANA**

1. Short-term trigger – is actual average annual take rate larger than expected? This trigger would be an annual take rate of 6 Indiana bats or 3 northern long-eared bats or more, and is calculated using significance level of  $\alpha=0.01$ .
2. Long-term trigger – does total cumulative take exceed the long-term authorized amount? This trigger would be an estimated cumulative mortality of 162 Indiana bats or 81 northern long-eared bats or more, and is calculated using significance level of  $\alpha=0.50$ .

The short-term and trigger cannot be applied to the 2017 monitoring results, as it utilizes a 3-year running average, which cannot yet to be calculated as 2017 was the second year of monitoring under the HCP.

### 3.0 Results

#### 3.1 SUMMARY OF SURVEYS

A total of 772 carcass searches were conducted over 7 weeks in the spring, and 2,333 carcass surveys were conducted over 11 weeks in the fall (Table 1). Due to weather conditions and maintenance at turbines, the average time between surveys was 7.28 days during the spring monitoring period and 3.66 days during the fall monitoring period (Table 1).

**Table 1.** Summary of standardized surveys during the 2017 post-construction monitoring study at the Wildcat Wind Farm, Tipton and Madison counties, Indiana.

Season	Date Range	Length (Weeks)	Road and Pad Turbines	Full Plot Turbines	Total number of searches conducted	Search Interval	Bat Carcasses Found <sup>1</sup>
Spring	3 April–18 May	7	63	62	772	7.28	35
Fall Sweep	24–27 July	1	63	62	125	NA	17
Fall	31 July–12 October	11	63	62	2,333	3.66	61

<sup>1</sup>This includes all carcasses found during standardized searches (within plots on a scheduled search day), including live bats found within the plots.

A total of 96 individual bat carcasses were found during standardized carcass searches, 35 during the spring surveys (36.5%) and 61 during the fall surveys (63.5%). These totals include one live bat found in the spring which was transferred to a licensed wildlife rehabilitator, but included in the standardized search summary since it may have been injured by the turbines.

**2017 POST-CONSTRUCTION BAT MORTALITY MONITORING REPORT  
WILDCAT WIND FARM  
MADISON AND TIPTON COUNTIES, INDIANA**

In addition, 17 bat carcasses were found during the fall sweep the week prior to the start of fall monitoring (presumably killed between 19 May and the end of July), 2 incidental bat carcasses were found during spring monitoring, and 2 incidental bat carcasses were found during fall monitoring. Thus, a total of 117 bat carcasses were found during 2017 monitoring, of which 96 (82.1%) were found during standardized searches and used for calculating the adjusted mortality estimates (see Section 3.5).

**3.1.1 Species Composition**

A summary of all bat carcasses found incidentally and during the standardized carcass surveys during post-construction monitoring is shown in Table 2. Of the 117 bat carcasses found at the site, silver-haired bat (*Lasionycteris noctivagans*) was the most common species detected (n=41; 34.4% of all bat carcasses found). Eastern red bat (*Lasiurus borealis*) was the next most common species (n=35; 29.9%), followed by hoary bat (*Lasiurus cinereus*; n=29; 24.8%), big brown bat (*Eptesicus fuscus*; n=9; 7.7%), and evening bat (*Nycticeius humeralis*; n=3; 2.6%). All bat carcasses were identified to the species level. Species composition did vary by season, with silver-haired bats comprising 75.7% of all spring fatalities (n=28), and only 20.6% of all fall fatalities (n=13). No bat species federally listed as threatened or endangered under the Endangered Species Act of 1973 (ESA), as amended, were found. The evening bat is listed as state endangered by the State of Indiana; three evening bats were found, one during the spring and two during the fall carcass searches. The silver-haired bat, eastern red bat, and hoary bat are all listed as special concern species in the state of Indiana, but none of these species receive any legal protection under the Nongame and Endangered Species Conservation Act.

**Table 2.** Summary of all bat carcasses found incidentally and during standardized carcass survey during the 2017 post-construction monitoring study at the Wildcat Wind Farm, Tipton and Madison counties, Indiana.

Species	Spring (3 April–18 May)	Fall (31 July–12 October)	Incidentals Found Prior to 31 July	Total
Silver-haired Bat	28 (76.0%)	13 (20.6%)	0 (0.0%)	41 (34.4%)
Eastern Red Bat	4 (10.8%)	24 (38.1%)	7 (41.2%)	35 (29.9%)
Hoary Bat	3 (8.1%)	18 (28.6%)	8 (47.1%)	29 (24.8%)
Big Brown Bat	1 (2.7%)	6 (9.5%)	2 (11.8%)	9 (7.7%)
Evening Bat	1 (2.7%)	2 (3.2%)	0 (0.0%)	3 (2.6%)



**2017 POST-CONSTRUCTION BAT MORTALITY MONITORING REPORT  
WILDCAT WIND FARM  
MADISON AND TIPTON COUNTIES, INDIANA**

Species	Spring (3 April–18 May)	Fall (31 July–12 October)	Incidentals Found Prior to 31 July	Total
<b>Total</b>	<b>37</b>	<b>63</b>	<b>17</b>	<b>117</b>

**3.1.2 Age and Sex**

A summary of the age and sex of all bat carcasses found during the standardized post-construction monitoring is shown in Table 3. Of the 96 bat carcasses found during the standardized searches, 29 were adult females (30%), 4 were juvenile females (4%), 2 were females of unknown age (2%), 20 were adult males (21%), 4 were juvenile males (4%), 1 was a male of unknown age (1%), 21 were adults of unknown sex (22%), 1 was a juvenile of unknown sex (1%), and 14 were bats of unknown age and unknown sex (15%; Table 3).

**Table 3.** Sex and age of bat carcasses found during standardized surveys (fall numbers presented in the table, with spring numbers in parenthesis) for the 2017 post-construction monitoring study at the Wildcat Wind Farm, Tipton and Madison counties, Indiana. Ages include adults (A), juveniles (J) and unknown (U).

Species	Female			Male			Unknown		
	A	J	U	A	J	U	A	J	U
Silver-haired Bat	3 (13)	0 (0)	1 (0)	4 (0)	2 (0)	0 (0)	1 (11)	0 (0)	2 (2)
Eastern Red Bat	6 (1)	1 (0)	0 (0)	8 (0)	1 (0)	0 (0)	2 (3)	1 (0)	4 (0)
Hoary Bat	3 (2)	2 (0)	1 (0)	7 (0)	1 (0)	0 (0)	0 (1)	0 (0)	4 (0)
Big Brown Bat	1 (0)	1 (0)	0 (0)	1 (0)	0 (0)	1 (0)	0 (1)	0 (0)	1 (0)
Evening Bat	0 (0)	0 (0)	0 (0)	0 (0)	0 (0)	0 (0)	1 (1)	0 (0)	1 (0)
<b>Total</b>	<b>13 (16)</b>	<b>4 (0)</b>	<b>2 (0)</b>	<b>20 (0)</b>	<b>4 (0)</b>	<b>1 (0)</b>	<b>4 (17)</b>	<b>1 (0)</b>	<b>12 (2)</b>

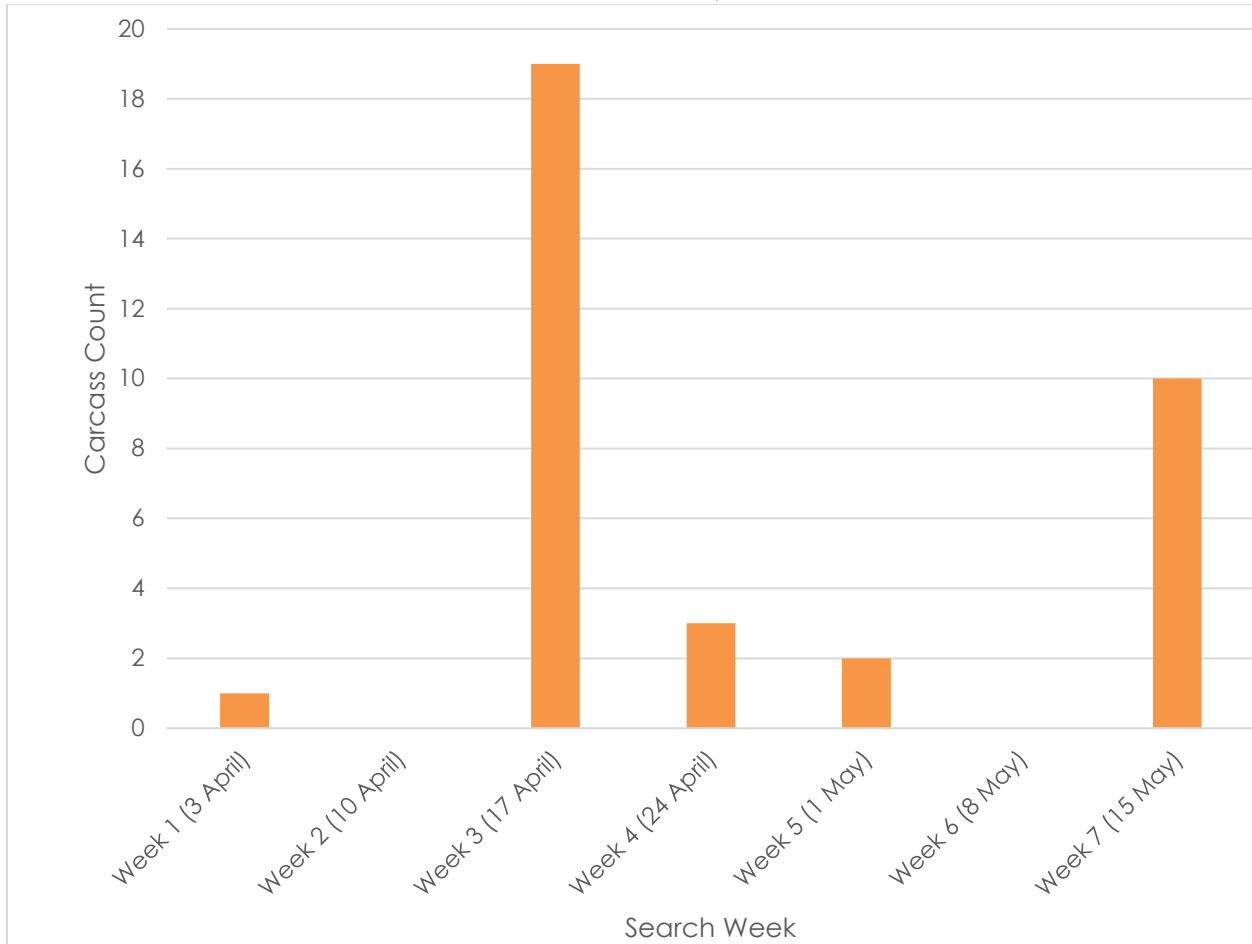
**3.1.3 Temporal Patterns**

Of the 96 bat carcasses found during standardized searches, 35 were found during the spring (36.5%) and 61 were found during the fall (63.5%).

During the spring, the greatest number of bat carcasses were found during the third week of searches (n=19; 54.3%), followed by the last week of searches (n=10; 28.6%; Figure 2). One bat was found during the first week of searches, three bats were found during the fourth week, and two bats were found during the fifth week. No bats were found during weeks 2 or 6. One bat found during the fifth week was alive, and transferred to a wildlife rehabilitator.

**2017 POST-CONSTRUCTION BAT MORTALITY MONITORING REPORT**  
**WILDCAT WIND FARM**  
**MADISON AND TIPTON COUNTIES, INDIANA**

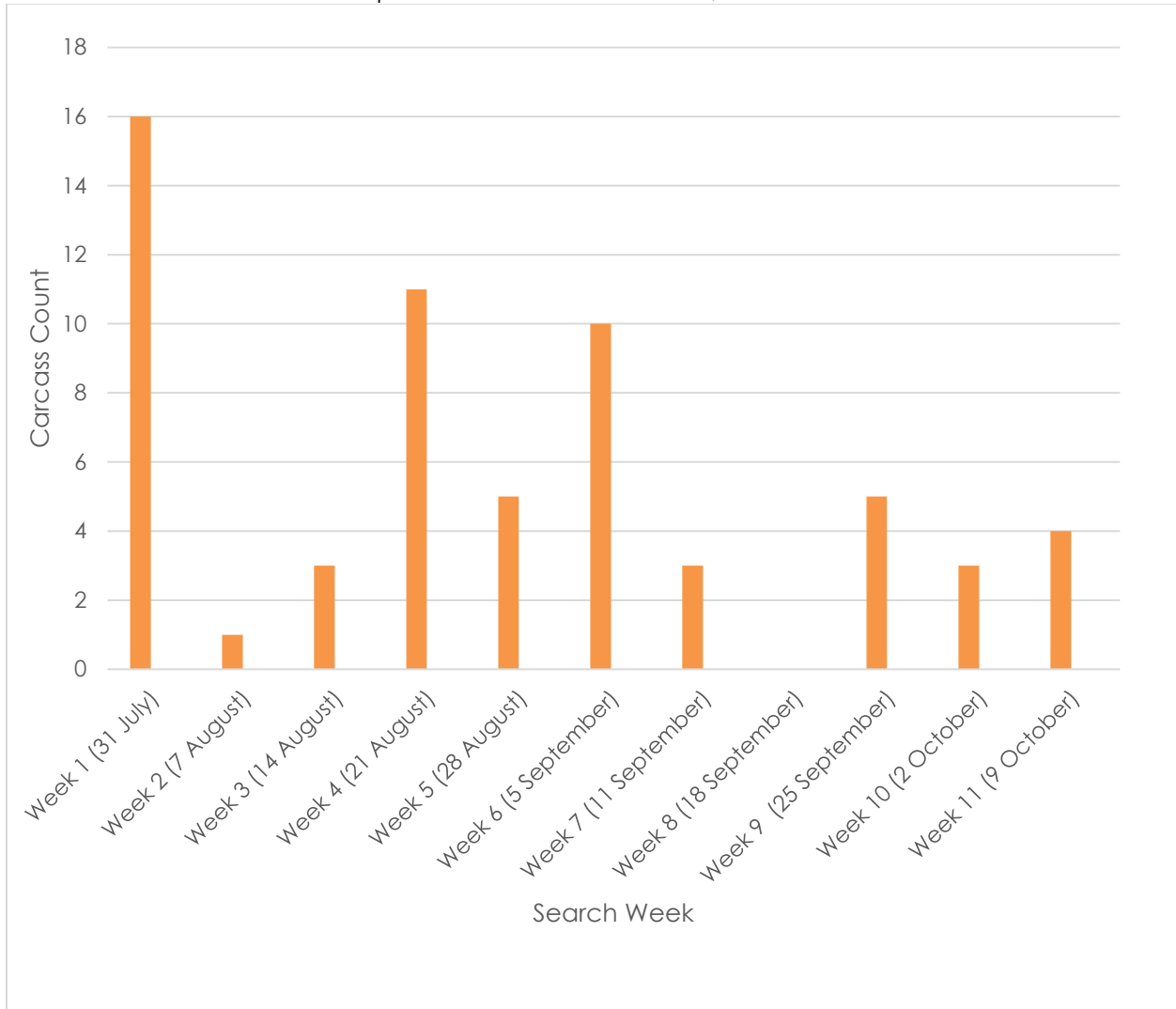
**Figure 2.** Bat carcasses found by week during the spring season of standardized surveys during the 2017 post-construction monitoring study (3 April- 18 May) at the Wildcat Wind Farm, Tipton and Madison counties, Indiana.



During the fall monitoring period, bats were found during every week of searches, except week 8 (Figure 3). The greatest number of bats found during a single week of surveys occurred the week of 31 July (week 1; 16 bats found; 16.7%), followed by week 4 (n=11; 11.5%) and week 6 (n=10; 10.4%). The fewest number of bats found during a single week occurred the week of 7 August (week 2) when only one bat was found.

**2017 POST-CONSTRUCTION BAT MORTALITY MONITORING REPORT  
 WILDCAT WIND FARM  
 MADISON AND TIPTON COUNTIES, INDIANA**

**Figure 3.** Bat carcasses found by week during the fall season of standardized surveys during the 2017 post-construction monitoring study (31 July through 12 October) at the Wildcat Wind Farm, Tipton and Madison counties, Indiana.



**3.1.4 Spatial Patterns**

During the spring standardized searches, bats were found at 26 of the 125 turbines (20.8%). During the fall standardized searches, bats were found at 47 of the 125 turbines (37.6%). Of the 96 carcasses found, 62 were found at full plot turbines and 34 were found at road and pad search turbines.

Of the 63 turbines at which roads and pads were searched in the spring, 13 carcasses were found at 11 different turbines (17.5%), with 2 carcasses found at each of 2 turbines (F1 and H16), 1 bat carcass at each of 9 turbines, and no carcasses found at each of the remaining 52 turbines. Of

## **2017 POST-CONSTRUCTION BAT MORTALITY MONITORING REPORT WILDCAT WIND FARM MADISON AND TIPTON COUNTIES, INDIANA**

the 63 turbines at which roads and pads only were searched in the fall, 21 carcasses were found at 18 different turbines (28.6%), with 2 carcasses found at each of 3 of the turbines, 1 carcass found at each of 15 turbines, and no carcasses found at each of the remaining 45 turbines.

Of the 62 turbines at which full plot searches were conducted in the spring, 22 carcasses were found at 15 different turbines (24.2%), with 3 carcasses found at each of 2 turbines (C10 and H8), 2 carcasses found at each of 3 turbines (C1, G5, H3), one carcass found at each of 10 turbines, and no carcasses found at each of the remaining 47 turbines. Of the 62 turbines at which full plot searches were conducted in the fall, 40 carcasses were found at 29 different turbines (58.0%), with 4 carcasses found at 1 turbine (D8), 3 carcasses found at 1 turbine (C4), and 2 carcasses found at each of 6 turbines (A7, B14, C1, C5, C14, and E9). Only one carcass was found at each of 21 turbines, and no carcasses were found at each of the remaining 33 turbines.

The number of carcasses found per turbine for the entire season varied from one to four, with the following breakdown:

- 4 carcasses – 2 turbines
- 3 carcasses – 5 turbines
- 2 carcasses – 14 turbines
- 1 carcass – 45 turbines
- 0 carcasses – 59 turbines

Carcasses were found at turbines located throughout the project area.

### **3.2 SEARCHER EFFICIENCY TRIALS**

A total of four searcher efficiency trials were conducted: one in the spring and three in the fall. Only one trial was conducted during the spring because there was only one searcher. For the fall, one trial was conducted for each of the three searchers during the monitoring period.

A total of 30 mouse carcasses were placed for the searcher efficiency trial during the spring monitoring period. In the fall period, 90 carcasses were placed (30 each for three searchers). Scavengers removed one of the trial carcasses prior to the searcher efficiency trial in the spring and 18 carcasses prior to the fall trials.

Searcher efficiency in the spring ranged from approximately 90% on the full plots to 100% on the roads and pads (Table 4). In the fall, searcher efficiency ranged from approximately 80% to 90% on full plots and from approximately 80% to 100% on roads and pads depending on the searcher (Table 4).

**2017 POST-CONSTRUCTION BAT MORTALITY MONITORING REPORT  
WILDCAT WIND FARM  
MADISON AND TIPTON COUNTIES, INDIANA**

**Table 4.** Searcher efficiency by season (Spring: 3 April to 18 May and Fall: 31 July to 12 October), search type (full 80-m x 80-m plots or roads and pads), and searcher for the 2017 post-construction monitoring study at the Wildcat Wind Farm, Tipton and Madison counties, Indiana.

	Spring Monitoring Period		Fall Monitoring Period					
	Roads and Pads	Full Plots	Roads and Pads			Full Plots		
			Searcher #1	Searcher #2	Searcher #3	Searcher #1	Searcher #2	Searcher #3
Number of Carcasses Placed	15	15	15	15	15	15	15	15
Number of Carcasses Scavenged Prior	0	1	3	3	1	6	5	0
Number of Carcasses Available	15	14	12	12	14	9	10	15
Number of Carcasses Found	15	12	10	12	13	8	8	12
<b>(p) Searcher Efficiency Mean (90% CI)</b>	<b>1</b> (1.0, 1.0)	<b>0.9</b> (0.7, 1.0)	<b>0.8</b> (0.7, 1.0)	<b>1.0</b> (1.0, 1.0)	<b>0.9</b> (0.8, 1.0)	<b>0.9</b> (0.7, 1.0)	<b>0.8</b> (0.6, 1.0)	<b>0.8</b> (0.6, 0.9)

### 3.3 CARCASS REMOVAL TRIALS

Mouse carcasses used in the searcher efficiency trials<sup>1</sup> were left for up to 30 days, and checked each day for the first week and then on days 10, 14, 20, and 30 of the trial. Thirty mouse carcasses were used during both the spring and fall monitoring period. Carcasses persisted for an average of 5.2 days for roads and pads and 6.4 days for full plots in the spring, and 4.6 days for roads and pads and 1.9 days for full plots in the fall (Table 5).

<sup>1</sup> For the fall, carcasses from Searcher #1's searcher efficiency trial were used for the carcass removal trials. Carcasses from Searcher #2 and Searcher #3's trials were removed after the searcher efficiency trials.

**2017 POST-CONSTRUCTION BAT MORTALITY MONITORING REPORT  
WILDCAT WIND FARM  
MADISON AND TIPTON COUNTIES, INDIANA**

**Table 5.** Carcass removal by season (Spring: 3 April to 18 May and Fall: 31 July to 12 October) during the 2017 post-construction monitoring study at the Wildcat Wind Farm, Tipton and Madison counties, Indiana.

	Spring Monitoring Period		Fall Monitoring Period	
	Roads and Pads	Full Plots	Roads and Pads	Full Plots
Number of Carcasses Placed	15	15	15	15
Number of Carcasses Scavenged within 30 days	15	14	14	15
<b>Mean Carcass Persistence time in days (90% CI)</b>	<b>5.2</b> (3.9, 6.5)	<b>6.4</b> (3.5, 11.8)	<b>4.6</b> (1.8, 10.0)	<b>1.9</b> (1.0, 3.2)

**3.4 PROBABILITY OF CARCASS AVAILABILITY AND DETECTION**

In the spring the probability of carcass availability and detection was estimated to be 54% on roads and pads and 53% on full plots (Table 6). In the fall the probability of carcass availability and detection was estimated to range from 62% to 69% on the roads and pads and from 37% to 60% on the full plots depending on the searcher efficiency of the searcher (Table 6).

**Table 6.** Carcass availability and detection by season (Spring: 3 April to 18 May and Fall: 31 July to 12 October), search type (full 80x80m plots or roads and pads), and searcher for the 2017 post-construction monitoring study at the Wildcat Wind Farm, Tipton and Madison counties, Indiana.

	Spring Monitoring Period		Fall Monitoring Period					
	Roads and Pads	Full Plots	Roads and Pads			Full Plots		
			Searcher #1	Searcher #2	Searcher #3	Searcher #1	Searcher #2	Searcher #3
<b>(p) Searcher Efficiency Mean (90% CI)</b>	<b>1</b> (1.0, 1.0)	<b>0.9</b> (0.7, 1.0)	<b>0.8</b> (0.7, 1.0)	<b>1.0</b> (1.0, 1.0)	<b>0.9</b> (0.8, 1.0)	<b>0.9</b> (0.7, 1.0)	<b>0.8</b> (0.6, 1.0)	<b>0.8</b> (0.6, 0.9)
<b>Mean Carcass Persistence time in days (90% CI)</b>	<b>5.2</b> (3.9, 6.5)	<b>6.4</b> (3.5, 11.8)	<b>4.6</b> (1.8, 10.0)			<b>1.9</b> (1.0, 3.2)		
<b>(π) Probability of carcass availability and detection</b>	<b>0.54</b> (0.46, 0.60)	<b>0.53</b> (0.35, 0.70)	<b>0.62</b> (0.35, 0.80)	<b>0.69</b> (0.43, 0.84)	<b>0.66</b> (0.40, 0.82)	<b>0.40</b> (0.22, 0.56)	<b>0.37</b> (0.19, 0.53)	<b>0.60</b> (0.43, 0.75)

**2017 POST-CONSTRUCTION BAT MORTALITY MONITORING REPORT  
WILDCAT WIND FARM  
MADISON AND TIPTON COUNTIES, INDIANA**

The average carcass availability and detection in the spring was estimated to be 53% (90% CI: 44% to 63%) after averaging across the two search types, and the average carcass availability and detection in the fall was estimated to be 60% (90% CI: 43% to 75%) after averaging across searchers and search types.

**3.5 ADJUSTED MORTALITY ESTIMATES**

Mortality rate estimates were calculated based upon the carcasses found during the mortality surveys, and did not include any incidental finds. Observed bat mortality estimates were adjusted to account for searcher efficiency, carcass removal, and an area adjustment<sup>2</sup> using the methods described in Section 2.4. Results are summarized in the following sections by season.

**3.5.1 Spring**

Over the spring migratory period (3 April–18 May), the estimated bat mortality was 1.4 bats/turbine, or 175 bats over the entire facility (Table 7).

**Table 7.** Bat mortality estimates for the spring 2017 post-construction monitoring study at the Wildcat Wind Farm, Tipton and Madison counties, Indiana. The Project was operating at a cut-in speed of 3.5 m/s during this time period.

	<b>Estimate</b>
(c) Observed bats/turbine	<b>0.28</b>
(A) Area Adjustment	<b>2.6</b>
(m) Estimated bats/turbine (90% CI)	<b>1.40</b> (0.95, 1.97)
Estimated bats/MW (90% CI)	<b>0.88</b> (0.59, 1.23)
Estimated bats/facility (90% CI)	<b>175</b> (119, 246)

$$^2 A = \frac{\frac{C_{RP}}{\pi_{RP} + S_{RP}} + \frac{C_{FP}}{\pi_{FP} + S_{FP}}}{\frac{C_{RP}}{\pi_{RP}} + \frac{C_{FP}}{\pi_{FP}}} * A_{FP}; A = \frac{\frac{13}{0.54 + 0.5} + \frac{22}{0.53 + 0.5}}{\frac{13}{0.54} + \frac{22}{0.53}} * 1.305 = 2.6 \text{ for the spring monitoring period}$$

$$A = \frac{\frac{21}{0.64 + 0.5} + \frac{40}{0.44 + 0.5}}{\frac{21}{0.64} + \frac{40}{0.44}} * 1.305 = 2.6 \text{ for the fall monitoring period}$$

**2017 POST-CONSTRUCTION BAT MORTALITY MONITORING REPORT  
WILDCAT WIND FARM  
MADISON AND TIPTON COUNTIES, INDIANA**

**3.5.2 Fall**

Over the entire fall migratory period (31 July–12 October), the estimated bat mortality was 2.17 bats/turbine, or 341 bats over the entire facility (Table 8).

**Table 8.** Bat mortality estimates for the fall 2017 post-construction monitoring study at the Wildcat Wind Farm, Tipton and Madison counties, Indiana. The project was operating at a cut-in speed of 5.0 m/s during this period.

	<b>Estimate</b>
(c) Observed bats/turbine	<b>0.49</b>
(A) Area Adjustment	<b>2.6</b>
(m) Estimated bats/turbine (90% CI)	<b>2.17</b> (1.57, 3.18)
Estimated bats/MW (90% CI)	<b>1.36</b> (0.98, 1.71)
Estimated bats/facility (90% CI)	<b>271</b> (196, 341)

**3.6 INCIDENTAL FINDS**

**3.6.1 Bats**

Four incidental bats were found during the 2017 spring and fall monitoring periods. Two were found during the spring, both silver-haired bats, and both outside the survey boundary, one at turbine E4 on 19 April, and one at C6 on 20 April. Two incidental bats were found during the fall, both found on 31 July, one at turbine A3 and the other at E4, both decomposed to the point they appeared to have died at least a week prior, indicating they had been missed during the fall sweep. In addition, 17 incidental bats were discovered prior to the fall surveys during the fall sweep (searches the week prior to fall monitoring). All incidental bats are summarized in Table 2, and the sex and age of incidental bat carcasses is summarized in Table 9.



**2017 POST-CONSTRUCTION BAT MORTALITY MONITORING REPORT  
WILDCAT WIND FARM  
MADISON AND TIPTON COUNTIES, INDIANA**

**Table 9.** Sex and age of incidental bat carcasses found during the 2017 post-construction monitoring study at the Wildcat Wind Farm, Tipton and Madison counties, Indiana. Ages include adults (A), juveniles (J) and unknown (U).

Species	Female			Male			Unknown		
	A	J	U	A	J	U	A	J	U
Eastern Red Bat	2	0	0	1	0	0	1	0	4
Hoary Bat	3	0	0	0	1	0	0	0	4
Silver-haired Bat	1	0	1	0	0	0	0	0	0
Big Brown Bat	0	0	0	0	1	0	0	0	2
<b>Total</b>	<b>6</b>	<b>0</b>	<b>1</b>	<b>1</b>	<b>2</b>	<b>0</b>	<b>1</b>	<b>0</b>	<b>10</b>

**3.6.2 Birds**

A total of 15 bird carcasses representing 11 species were found at 15 different turbines during the 2017 post-construction studies (Table 10). Of those, nine (60%) were found during the spring monitoring period. The remaining six bird carcasses (40%) were found during the fall monitoring period. The bird carcasses found during the survey are summarized in Table 10.

**Table 10.** Summary of bird carcasses found during the 2017 post-construction monitoring study (3 April to 18 May and July 31 to 12 October) at the Wildcat Wind Farm, Tipton and Madison counties, Indiana.

Date	Species	Turbine
3 April	European Starling ( <i>Sturnis vulgaris</i> )	G1
6 April	Unknown bird species	C11
13 April	Red-tailed Hawk ( <i>Buteo jamaicensis</i> )	C10
10 May	Sharp-shinned Hawk ( <i>Accipiter striatus</i> ) [Special Concern]	E2
10 May	Red-tailed Hawk	A6
16 May	House Wren ( <i>Troglodytes aedon</i> )	E12
16 May	Mourning Dove ( <i>Zenaida macroura</i> )	F15
17 May	Yellow-billed Cuckoo ( <i>Coccyzus americanus</i> )	E4
18 May	American Redstart ( <i>Setophaga ruticilla</i> )	C2
15 August	Common Nighthawk ( <i>Chordeiles minor</i> ) [Special Concern]	F2
21 August	Killdeer ( <i>Charadrius vociferous</i> )	A3
11 September	Horned Lark ( <i>Eromophila alpestris</i> )	G1
25 September	Turkey Vulture ( <i>Cathartes aura</i> )	E8
26 September	Horned Lark	D7
04 October	Sharp-shinned Hawk [Special Concern]	H9

**2017 POST-CONSTRUCTION BAT MORTALITY MONITORING REPORT  
WILDCAT WIND FARM  
MADISON AND TIPTON COUNTIES, INDIANA**

The most commonly found bird species were the horned lark (*Eromophila alpestris*), red-tailed hawk (*Buteo jamaicensis*) and the sharp-shinned hawk (*Accipiter striatus*), which made up 40.0% of all bird fatalities (n=2 for each species). A single individual carcass was found for the remaining eight species, along with one unknown carcass (Table 10). Three individuals representing two special concern species listed by the Indiana Division of Fish and Wildlife (sharp-shinned hawk and common nighthawk [*Chordeiles minor*]) were found during surveys, 2 during the fall and 1 during the spring (Table 10).

### **3.7 ESTIMATED TAKE OF INDIANA BATS AND NORTHERN LONG-EARED BATS**

There were no Indiana bats or northern long-eared bats found during the 2017 post-construction monitoring surveys. The following inputs were used to calculate the probability of detection (g) for the 2017 fall season within the EOA software:

- Searcher efficiency: 0.86
- Coverage (a): 0.38
- Search interval<sup>3</sup>: 3.5
- Factor by which searcher efficiency changes with each search (k): 0.8 (EOA default)
- Persistence Distribution: exponential with a mean persistence of 3.25 days
- Prior distribution: uniform with a maximum fatality of 200 (EOA default)
- Arrival function: uniform (EOA default)

This resulted in a probability of detection (g) of 0.206 (95% CI: 0.135 to 0.287).

The "Multi-Year Module" tool was then used with a confidence level of 0.5, with the following inputs for the first year (from 2016 monitoring):

- Carcasses found = 0
- Probability of detection = 0.267 ( $B_a = 139.4113$ ,  $B_b = 383.4858$ )

And the following inputs for this years' monitoring effort:

- Carcasses found = 0
- Probability of detection = 0.206 ( $B_a = 21.865$ ,  $B_b = 84.2986$ )

Which resulted in an estimated cumulative total take of 0 Indiana bats (95% CI: 0 to 7) and 0 northern long-eared bats (95% CI: 0 to 7). Since neither the Indiana bat nor northern long-eared bat have been found at the Project, the estimates are the same for both species.

As discussed in Section 2.5 above, the short-term trigger cannot be applied to the 2017 monitoring results, as it utilizes a 3-year running average, which cannot yet to be calculated as 2017 was the second year of monitoring under the HCP.

---

<sup>3</sup> Closest value to the actual search interval (3.66 days) that EofA would accept

**2017 POST-CONSTRUCTION BAT MORTALITY MONITORING REPORT  
WILDCAT WIND FARM  
MADISON AND TIPTON COUNTIES, INDIANA**

## **4.0 Summary and Conclusions**

### **4.1 SUMMARY**

- A total of 3,105 standardized carcass surveys were conducted over 18 weeks encompassing two survey periods (spring and fall) in 2017.
- A total of 96 bat carcasses were found during standardized carcass searches, with an additional 21 incidental bat carcasses and 15 bird carcasses.
- No bird or bat species listed as federally threatened or endangered under the ESA were found during this study.
- One state-endangered bat species (evening bat), and three special concern bat species (silver-haired bat, eastern red bat, and hoary bat) were found during this study.
- Two special concern bird species (sharp-shinned hawk and common nighthawk) were found during this study.
- Bat species found during standardized surveys included silver-haired bat (39), eastern red bat (27), hoary bat (21), big brown bat (6) and evening bat (3).
- Estimated facility-wide bat mortality in the spring (3 April to 18 May) was 175 bats (90% CI: 119 to 246), compared to an estimated bat mortality in the fall (31 July to 12 October) of 271 bats (90% CI: 196 to 341).
- No Indiana bat or northern long-eared bats were found during the 2017 study.

### **4.2 COMPARISON TO PREVIOUS STUDIES**

A Post-Construction Mortality Minimization and Monitoring Proposal (MMMP) was developed in June 2012 and revised in June 2015 (Stantec 2015), and is consistent with methods and the recommendations of the USFWS Land-Based Wind Energy Guidelines (USFWS 2012). From 2013 through June 2015, the Project operated under the terms of a Technical Assistance Letter (TAL) dated 18 June 2012, that established an operational scenario under which no take of Indiana bats was expected to occur (i.e. 6.9 m/s cut-in speed during the fall migration period [1 August–15 October]).

From July 2015 to 18 August 2016 the Project operated under the terms of a second TAL secured on 2 July 2015 that established a revised operational scenario under which no take of Indiana bats or northern long-eared bats is expected to occur. This second TAL required curtailment to 6.9 m/s during the fall migration period (1 August–15 October) and 5.0 m/s during the spring migration period (15 March–15 May). On 19 August 2016, the Project obtained an ITP from the USFWS, allowing operations under the terms of the Project's HCP, including curtailment to 3.5 m/s during the spring migration period (1 April–15 May) and curtailment to 5.0 m/s during the fall migration

**2017 POST-CONSTRUCTION BAT MORTALITY MONITORING REPORT  
WILDCAT WIND FARM  
MADISON AND TIPTON COUNTIES, INDIANA**

period (1 August–15 October). Due to this, the 2016 data were analyzed separately for the time periods before and after 19 August due to the differing operational protocols that the turbines were operating under.

Post-construction monitoring has been conducted for 5 years at the Project. While the surveys differed in level of effort (search interval, search area) and bias correction factors (searcher efficiency, carcass persistence, area adjustments), all surveys had overall fatality estimates corrected for these differences, allowing for comparison of results. In addition, the Project operated under different cut-in speed adjustments between years based on the TAL or ITP requirements.

**4.2.1 Spring Migration Season**

For the first three years of Project operations and for the 2017 spring season the turbines operated at the manufacturer’s cut-in speed of 3.5 m/s. The mean bat fatality estimate ranged from 88 to 175 bats during the spring period, compared to 34 bats during the 2016 spring season, when the project was operating at a cut-in speed of 5.0 m/s (Table 11).

**Table 11.** Bat mortality estimates by year for the spring migratory period (1 April–15 May) at the Wildcat Wind Farm, Tipton and Madison counties, Indiana.

	Year and Cut-in Speed				
	2013 (3.5 m/s)	2014 (3.5 m/s)	2015 (3.5 m/s)	2016 (5.0 m/s) <sup>1</sup>	2017 (3.5 m/s)
(m) Estimated bats/turbine	0.7	1.1	1.0	0.3	1.4
Estimated bats/MW	0.4	0.7	0.6	0.2	0.88
Estimated bats/facility	88	138	119	34	175

<sup>1</sup>2016 season began on 15 March per USFWS request, so the search season was two weeks longer than prior years, though no bats were found during that time period, so it did not change the overall fatality estimate.

**4.2.2 Fall Migration Season**

For the first three years of Project operations the turbines operated under the terms of TALs, with a cut-in speed of 6.9 m/s. The mean bat fatality estimate ranged from 88 to 188 bats during the fall period, compared to 328.8 bats during the 2016 fall season, when the project was operating at a cut-in speed of 5.0 m/s after 19 August (Table 12). The 2017 fall migration season was the first year that the project operated at 5.0 m/s for the entire period, and the mean bat fatality estimate for the facility was 271 bats (Table 12).

**2017 POST-CONSTRUCTION BAT MORTALITY MONITORING REPORT  
WILDCAT WIND FARM  
MADISON AND TIPTON COUNTIES, INDIANA**

**Table 12.** Bat mortality estimates by year for the fall migratory period (1 August–15 October) at the Wildcat Wind Farm, Tipton and Madison counties, Indiana.

	Year and Cut-in Speed					
	2013 (6.9 m/s)	2014 (6.9 m/s)	2015 (6.9 m/s)	2016		2017 (5.0 m/s)
				(6.9 m/s until 19 August)	(5.0 m/s after 19 August)	
(m) Estimated bats/turbine	0.7	1.0	1.5	0.43	2.2	2.17
Estimated bats/MW	0.4	0.6	0.9	0.27	1.38	1.36
Estimated bats/facility	88	125	188	53.8	275	271

**4.3 CONCLUSIONS**

No Indiana bat or northern long-eared bat fatalities were detected during 2017, and the long-term trigger was not reached for either species when analyzed using EOA. As described in the HCP, the short-term trigger does not apply until after the third year of Baseline Monitoring under uniform operating parameters. Thus, no adaptive management actions will be implemented in 2018. The bias-correction parameters from 2017 (e.g., searcher efficiency, carcass persistence, area adjustment, etc.) will be used in the design of protocols for 2018 monitoring.

**5.0 Literature Cited**

Arnett, E.B., W.P. Erickson, J. Kerns, and J. Horn. 2005. Relationships Between Bats and Wind Turbines in Pennsylvania and West Virginia: An Assessment of Fatality Search Protocols, Patterns of Fatality, and Behavioral Interactions with Wind Turbines. Final Report prepared for the Bats and Wind Energy Cooperative. Bat Conservation International, Austin, Texas. June 2005.

Arnett, E.B., W.K. Brown, W.P. Erickson, J.K. Fiedler, B.L. Hamilton, T.H. Henry, A. Jain, G.D. Johnson, J. Kerns, R.R. Koford, C.P. Nicholson, T.J. O’Connell, M.D. Piorkowski, and R.D. Tankersley. 2008. Patterns of bat fatalities at wind energy facilities in North America. *Journal of Wildlife Management* 72: 61-78.

Dalthorp, D., Huso, M., Dail, D, and Kenyon, J. 2014. Evidence of Absence Software User Guide. U.S. Department of the Interior, U.S. Geological Survey. Data Series 881.

Erickson, W.P., Gritski, B., and K. Kronner. 2003. Nine Canyon Wind Power Project Avian and Bat Monitoring Report, August 2003. Technical report submitted to energy Northwest and the Nine Canyon Technical Advisory Committee.

**2017 POST-CONSTRUCTION BAT MORTALITY MONITORING REPORT  
WILDCAT WIND FARM  
MADISON AND TIPTON COUNTIES, INDIANA**

- Jain, A., P. Kerlinger, R. Curry, and L. Slobodnik. 2007. Annual Report for the Maple Ridge Wind Power Project: Post-Construction Bird and Bat Fatality Study – 2006. Final report. Prepared for PPM Energy and Horizon Energy and Technical Advisory Committee (TAC) for the Maple Ridge Project Study.
- Good, R. E., Erickson, W., Merrill, A., Simon, S., Murray, K., Bay, K., & Fritchman, C. 2011. Bat monitoring studies at the Fowler Ridge Wind Energy Facility, Benton County, Indiana, April 13–October 15, 2010. Prepared for Fowler Ridge Wind Farm, by Western EcoSystems Technology, Inc. Cheyenne, WY, USA.
- Gruver, J., K. Bay, and W. Erickson. 2009. Post-construction bat and bird fatality study, Blue Sky Green Field Wind Resource Area, Fond du Lac County, Wisconsin. Interim Report prepared for We Energies, Milwaukee, Wisconsin.
- Kerns, J., and P. Kerlinger. 2004. A Study of Bird and Bat Collisions at the Mountaineer Wind Energy Center, Tucker County, West Virginia: Annual Report for 2003. Prepared for FPL Energy and the Mountaineer Wind Energy Center Technical Review Committee. Technical report prepared by Curry and Kerlinger, LLC. February 14, 2004. 39 pp. <http://www.wvhighlands.org/Birds/MountaineerFinalAvianRpt-%203-15-04PKJK.pdf>.
- Kunz, T.H., E.B. Arnett, B.M. Cooper, W.P. Erickson, R.P. Larkin, T. Mabee, M.L. Morrison, M.D. Strickland, and J.M. Szewczak. 2007. Assessing Impacts of Wind-Energy Development on Nocturnally Active Birds and Bats: A Guidance Document. *Journal of Wildlife Management* 71:2449-2486.
- Manly, B.F.J. 1997. *Randomization, Bootstrap, and Monte Carlo Methods in Biology*. Second edition. Chapman and Hall, New York. 399 pp.
- Piorkowski, M.D., and T. J. O'Connell. 2010. Spatial Pattern of Summer Bat Mortality from Collisions with Wind Turbines in Mixed-grass Prairie. *Am. Midl. Nat.* 164:260-269.
- US Fish and Wildlife Service (USFWS). 2012. *Land-based Wind Energy Guidelines*. March 2012. 71 pp.
- Young, D. P., Erickson, W.P., Bay, K., Nomani, S., and W. Tidhar. 2009. Mount Storm Wind Energy Facility, Phase I Post-Construction Avian and Bat Monitoring, July–October 2008. Prepared for NedPower Mount Storm, LLC, by Western EcoSystems Technology, Inc. 40pp.

# APPENDIX A

Sample Data Sheets





TURBINE NO. <sup>1</sup>	PLOT TYPE <sup>2</sup>	CARCASS NO. <sup>3</sup>	FROM TURBINE		ON ROAD/PAD?	GPS COORDINATES	SPECIES <sup>4</sup>	FOREARM LENGTH OF BAT (mm)	AGE <sup>5</sup>	SEX <sup>6</sup>	CAUSE OF DEATH <sup>7</sup>	CONDITION <sup>8</sup>	CHECK IF COMMENTS (write on back) <sup>9</sup>
			DISTANCE (m)	AZIMUTH (DEGREES)									
												/	
												/	
												/	
												/	
												/	
												/	
												/	
												/	
												/	

<sup>1</sup> TURBINE – ENTER NUMBER OF TURBINE. ALSO SEARCH THE TURBINE PAD AND ACCESS ROAD IN ADDITION TO THE STUDY PLOT.

<sup>2</sup> PLOT TYPE – R=ROADS AND PADS, F=FULL PLOT

<sup>3</sup> CARCASS NO. – NUMBER CARCASSES IN THE ORDER THEY ARE FOUND.

<sup>4</sup> SPECIES – IF UNKNOWN, SPECIFY UNKNOWN BAT OR UNKNOWN BIRD.

<sup>5</sup> AGE – IF IDENTIFIABLE: ADULT = A; JUVENILE = J; UNKNOWN = U

<sup>6</sup> SEX – IF IDENTIFIABLE: FEMALE = F; MALE = M, UNKNOWN = U

<sup>7</sup> CAUSE OF DEATH – COLLISION WITH TURBINE = T; PREDATION = P; UNKNOWN = U (ADD EXPLANATION IN COMMENTS IF NECESSARY).

<sup>8</sup> CONDITION – ENTER F=FRESH OR D=DECOMPOSED AND WHOLE =W; MOST OF BODY WITH SOME MISSING = M; PIECES = P (E.G., WING ONLY); FEATHER SPOT = F (EXAMPLE: F/W)

<sup>9</sup> COMMENTS – INCLUDING: REPRODUCTIVE CONDITION, IF IDENTIFIABLE: PREGNANT = P; LACTATING = L; POST-LACTATING = PL; NON-REPRODUCTIVE = NR; TESTES DESCENDED = T; UNKNOWN = U; B= BREEDING (BIRDS).

BAND COLOR/No. – IF BANDED, RECORD COLOR OF BAND (OR METAL), AND NUMBER.

OTHER COMMENTS. INCLUDE CARCASS NUMBER NEXT TO ALL COMMENTS.

**PHOTOS:** WHERE POSSIBLE, PHOTOGRAPH FOR BATS: BACK, BREAST, MUZZLE, TRAGUS, RULER BEHIND EAR, RULER NEXT TO FOREARM, FOOT, TOEHAIRS, CALCAR (IF EXPOSED).

FOR BIRDS: BACK, BREAST, HEAD, FEET, UNDERSIDE OF WINGS (FOR RAPTORS).

**ADDITIONAL COMMENTS (record carcass number next to associated comment; include any identifiers and bands, if present):**

---



---



---





Carcass ID <sup>1</sup>	Placement				Species	Condition <sup>4</sup> When Checked, Checked By <sup>5</sup>										
	GPS Coordinates	Time (Military)	Turbine <sup>2</sup>	Placed By <sup>3</sup>		Day 1	Day 2	Day 3	Day 4	Day 5	Day 6	Day 7	Day 10	Day 14	Day 20	Day 30

<sup>1</sup> Carcass ID – Identification number marked inside carcass.

<sup>2</sup> Turbine – Turbine number where carcass placed.

<sup>3</sup> Placed By – Initials of the person who placed the carcass.

<sup>4</sup> Condition – Record the condition the carcass was in when checked. Intact = I, Signs of scavenging = S, Feather/Fur Spot = F, Missing or < 10 feathers = 0

<sup>5</sup> Checked by – Record the initials of the person who checked on the carcass.

**Comments:** \_\_\_\_\_  
 \_\_\_\_\_  
 \_\_\_\_\_  
 \_\_\_\_\_  
 \_\_\_\_\_  
 \_\_\_\_\_

More data on back? Yes No



Carcass ID <sup>1</sup>	Placement				GPS Coordinates	From Turbine		Species	Trial Result		
	Time (Military)	Turbine <sup>2</sup>	Placed By <sup>3</sup>	On Road/Pad?		Distance (m)	Azimuth (degrees)		Found By <sup>4</sup>	Not Found	Scavenged Prior to Search

**Comments (record carcass number next to associated comment, include any identifiers and bands, if present):**

---



---



---



---



---



---



---

<sup>1</sup> Carcass ID – Use carcass ID from when it was originally found. If no ID, just number.  
<sup>2</sup> Turbine – Turbine should be labeled with the turbine number where it was placed.  
<sup>3</sup> Placed By – Initials of the person who placed the carcass.  
<sup>4</sup> Found By – Record the initials of the person who found the carcass.

**More data on back? Yes No**

# APPENDIX B

Representative Carcass Photos



**Photo 1. Representative example of an Eastern Red bat (*Lasiurus borealis*) found during full plot surveys at turbine D8 at the Wildcat Wind Farm. (September 8, 2017)**



**Photo 2. Hoary bat (*Lasiurus cinereus*) with calipers found during full plot surveys at turbine C1 at the Wildcat Wind Farm. (July 31, 2017)**





**Photo 3. Representative example of a big brown bat (*Eptesicus fuscus*) found during full plot surveys at turbine D8 at the Wildcat Wind Farm. (August 1, 2017)**



**Photo 4. Representative example of a silver-haired bat (*Lasionycteris noctivagans*) found during surveys at turbine C at the Wildcat Wind Farm. (September 8, 2017)**



**Photo 5. Photo of a evening bat (*Nycticeius humeralis*) with calipers found during full plot surveys at turbine C4 at the Wildcat Wind Farm. (October 3, 2017).**



**Photo 6. Sharp-shinned Hawk (*Accipiter striatus*) found during fall surveys at the Wildcat Wind Farm post-construction monitoring surveys. This bird was found at turbine H9. October 4, 2017)**



**Photo 7. Common nighthawk (*Chordeiles minor*) found during fall surveys at the Wildcat Wind Farm post-construction monitoring surveys. This bird was found at turbine F2. (August 15, 2017)**



**Photo 7. Yellow-billed cuckoo (*Coccyzus americanus*) found during spring surveys at the Wildcat Wind Farm post-construction monitoring surveys. This bird was found at turbine E4. (May 17, 2017)**