

Columbia National Wildlife Refuge

Fishing Regulations



Welcome

Columbia National Wildlife Refuge offers fishing for a variety of common game fish species, including rainbow trout, bass, bluegill, crappie, perch and walleye.

All persons fishing on the refuge are required to have a valid state fishing license and are responsible for following all applicable state regulations. State fishing regulations are available at wdfw.wa.gov/fishing/regulations/. Fishing licenses are available at select vendors or online at fishhunt.dfw.wa.gov.

Popular Fish Species by Season

- Early season – trout, bass, crappie, perch and walleye.
- Late spring through fall – bass, bluegill, crappie, perch and walleye.

Popular Fishing Destinations on the Refuge

- Hampton Lakes – trout.
- Hutchinson Lake – bass, bluegill, crappie, perch and walleye.
- Soda Lake – all species.
- Teal Lakes – trout.

Refuge Hours

Sunrise to sunset.

Other Regulations

Refer to the current Washington State Sport Fishing Rules for daily limits for all fish species, size restrictions, gear restrictions and additional season information.

Refuge Waters Open Year-round to Fishing

See map and consult state regulations for additional open areas.

- Blythe Lake
- Chukar Lake
- Corral Lake
- Crescent Lake
- Goldeneye Lake
- Mallard Lake
- Quail Lake (*Catch-and-release only, flyfishing only, motors prohibited.*)
- Scaup Lake
- Soda Lake

Waterfowl Sanctuary Areas

Some land areas are closed to fishing for all or part of the year to provide undisturbed sanctuary for waterfowl.

Refuge Waters Only Open from 4th Saturday in April Through September 30

- All lakes within the yellow area of the map on the reverse side of this page.
- For lakes bordering the yellow area, please consult state fishing regulations for opening dates; access from refuge lands begins March 1.

Refuge Waters Closed Year-round

- Royal Lake and Royal Slough
- Crab Creek — Marsh Units 1 & 2

Prohibited Activities

- Motors on Quail Lake.
- Internal combustion motors on Lower Hampton, Upper Hampton, Hutchinson and Shiner Lakes. All internal combustion engines must be removed from boats.
- Fires.
- Overnight camping and parking.
- Littering. Carry out everything you bring in.
- Use of ATVs and other off-road vehicles.
- Commercial guiding for fishing.
- Abandoning, discarding, or otherwise leaving personal property.
- Swimming in all waters on the refuge.
- Searching for and/or removing archaeological or cultural artifacts.
- Dogs or other pets off leash.
- Additional rules and regulations apply. See 50 CFR.

Contact Information

Columbia National Wildlife Refuge
64 Maple Street
Burbank, WA 99323
509-546-8300
www.fws.gov/refuge/columbia/
mcriver@fws.gov

Revised: April 2019

Bass



Crappie



Bluegill



Rainbow Trout

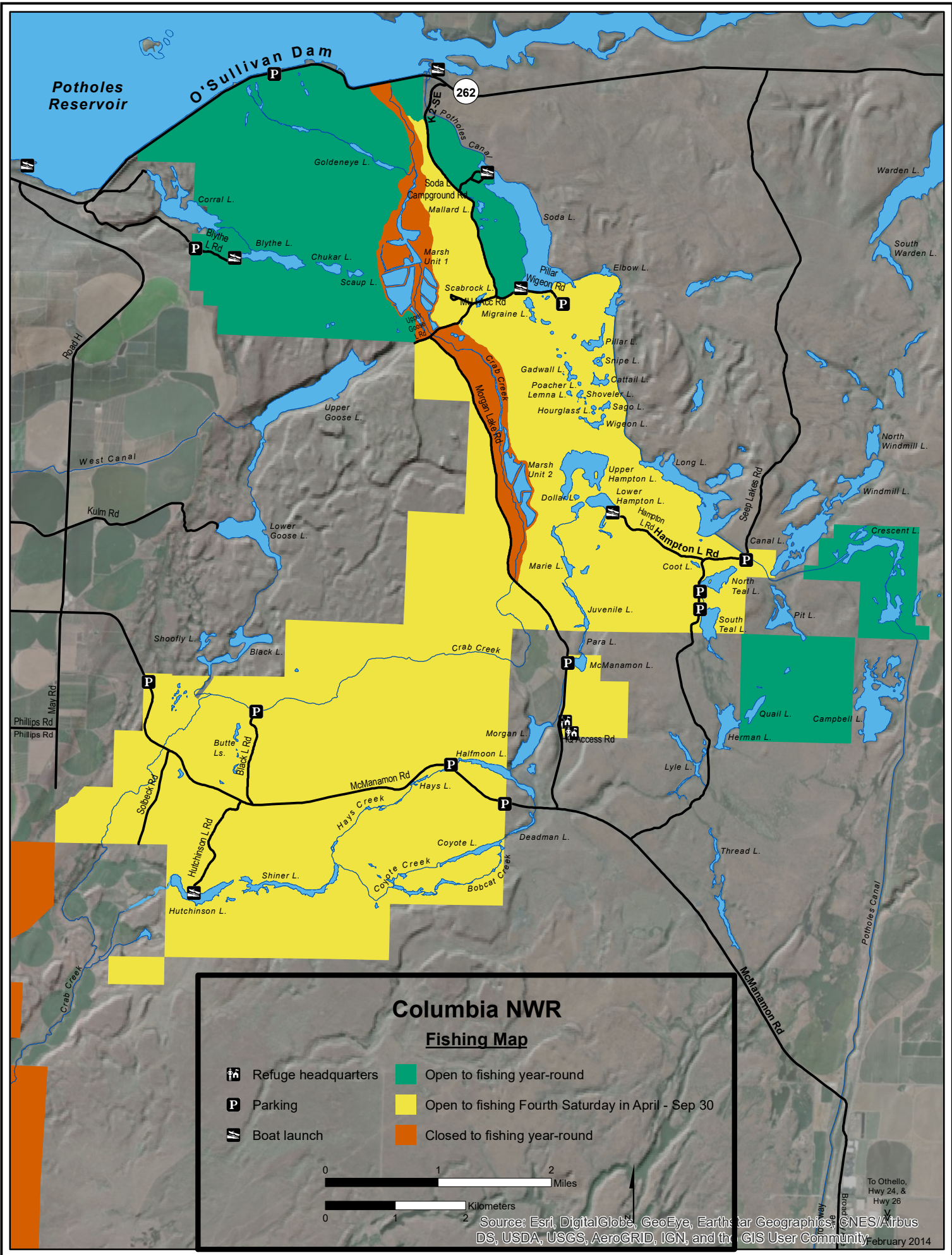


Yellow Perch



Walleye





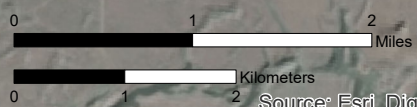
Potholes Reservoir

O'Sullivan Dam

262

**Columbia NWR
Fishing Map**

- Refuge headquarters
- Parking
- Boat launch
- Open to fishing year-round
- Open to fishing Fourth Saturday in April - Sep 30
- Closed to fishing year-round



Source: Esri, DigitalGlobe, GeoEye, Earthstar Geographics, ©NES/Airbus DS, USDA, USGS, AeroGRID, IGN, and the GIS User Community
February 2014

To Othello,
Hwy 24, &
Hwy 26