

U.S. Fish & Wildlife Service

2013 Annual Report

*Migratory Bird
Conservation Commission*





GADWALL

On the Cover: *Common Goldeneye Drake.*
Painting by Robert Steiner for the
2013–2014 Federal Duck Stamp.

Illustrations: Bob Hines

Table of Contents

The Service’s Legacy of Conserving Migratory Waterfowl Habitat	2
The Migratory Bird Conservation Commission	3
The Migratory Bird Conservation Fund	4
MBCF Approvals for Fiscal Year 2013.....	5
MBCF Land Acquisitions for Fiscal Year 2013	6
National Wildlife Refuge System: New Area and Boundary Approvals for Fiscal Year 2013	9
Boundary Addition Approvals and Maps.....	10
National Migratory Bird Refuge Areas and Waterfowl Production Areas	18
Notes on Tables 1 and 2.....	18
National Migratory Bird Refuge Areas Map.....	19
Table 1. National Migratory Bird Refuges	20
Wetland Management Districts Map	29
Table 2. Waterfowl Production Areas by State	30
North American Wetlands Conservation Fund: Summary of MBCC Approvals for Fiscal Year 2013	36
Table 3. U.S. Wetlands Conservation Standard Grants Proposals	37
Table 4. U.S. Wetlands Conservation Small Grant Proposals.....	38
Table 5. Canadian Wetlands Conservation Proposals	39
Table 6. Mexican Wetlands Conservation Proposals	39
Membership of the Migratory Bird Conservation Commission	40

The Service's Legacy of Conserving Migratory Waterfowl Habitat

For more than 80 years, the Federal Duck Stamp Program and the Migratory Bird Conservation Program have helped secure key habitats to sustain migratory bird populations. They protect wetlands, help dissipate storm water runoff, purify water supplies, and store flood water. As we look forward to the continuing conservation of these critical resources, we can find inspiration in these programs' extraordinary history of success.

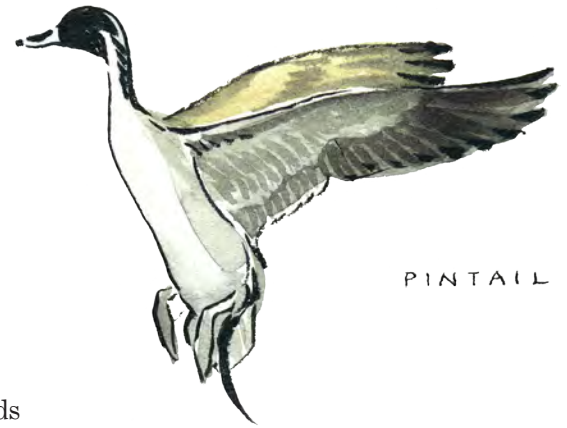
At the turn of the 20th century, overeager hunters and the commercial demand for meat and feathers had decimated waterfowl populations. At the same time, periodic droughts caused wetlands and other valuable waterfowl habitat to disappear. In the late 1920s, conservationists, hunters, and government officials worked together to create the Migratory Bird Conservation Act, which Congress passed in 1929. This landmark legislation authorized the Federal government to acquire and permanently protect wetlands for waterfowl. It also created the Migratory Bird Conservation Commission – composed of Federal and State officials – to consider and approve proposals for land acquisition.

Although the Act gave the Federal Government authority to create migratory bird refuges, it did not provide a permanent source of acquisition funding. This problem was addressed in the 1930s when President Franklin D. Roosevelt appointed Jay N. “Ding” Darling, a nationally known wildlife conservationist and political cartoonist, to serve as the Chief of the Bureau of Biological Survey. Darling was instrumental in the creation of a stamp, to be purchased by all waterfowl hunters, that would generate funds to pay for the acquisition of waterfowl habitat. In 1934, Congress passed the Migratory Bird Hunting and Conservation Stamp Act, which requires all hunters older than 16 to purchase and possess a Federal Duck Stamp while hunting waterfowl. Revenues from Duck Stamp sales are now deposited in the Migratory Bird Conservation Fund. The fund also includes import duties collected on arms and ammunition, receipts from permits for rights-of-way across refuge

lands, and any appropriations from the Wetlands Loan Act, which Congress authorized in 1961 as an advance of funds against future revenues from the sale of Duck Stamps.

Since 1934, the Service has spent more than one billion Migratory Bird Conservation Fund dollars to permanently protect more than five million acres of important waterfowl habitat – including more than three million acres of waterfowl production areas in the U.S. Prairie Pothole Region. In 2013 alone, the Service used close to \$53 million in funds from the Migratory Bird Conservation Fund to purchase, lease, or protect via easement more than seven thousand acres of waterfowl habitat at migratory bird refuges and nearly 53,000 acres in the Prairie Pothole Region.

Today, as in the past, the Federal Duck Stamp Program and Migratory Bird Conservation Program depend on the support of people who understand and connect with our natural world – people who understand the importance of our wildlife resources and take action. What can you do? Buy a Federal Duck Stamp. Tell people how important Federal Duck Stamps are to ensuring healthy populations of all migratory birds and other wildlife. For more information, visit our Federal Duck Stamp Web site <www.fws.gov/duckstamps/> or our Division of Realty Web site <www.fws.gov/refuges/realty/>.



PINTAIL

The Migratory Bird Conservation Commission

Section 2 of the Migratory Bird Conservation Act of 1929 established the Migratory Bird Conservation Commission. It reads as follows:

Section 2, as amended. A commission to be known as the Migratory Bird Conservation Commission, consisting of the Secretary of the Interior, as chairman, the Administrator of the Environmental Protection Agency, the Secretary of Agriculture, and two Members of the Senate, to be selected by the President of the Senate, and two Members of the House of Representatives to be selected by the Speaker; is created and authorized to consider and pass upon any area of land, water, or land and water that may be recommended by the Secretary of the Interior for purchase or rental under this subchapter; and to fix the price or prices at which such area may be purchased or rented; and no purchase or rental shall be made of any such area until it has been duly approved for purchase or rental by said commission. Any Member of the House of Representatives, who is

a member of the commission, if reelected to the succeeding Congress, may serve on the commission notwithstanding the expiration of a Congress. Any vacancy on the commission shall be filled in the same manner as the original appointment. The ranking officer of the branch or department of a State to which is committed the administration of its game laws, or his authorized representative, and in a State having no such branch or department, the governor thereof, or his authorized representative, shall be a member ex officio of said commission for the purpose of considering and voting on all questions relating to the acquisition, under this subchapter, of areas in his State. For purposes of this subchapter, the purchase or rental of any area of land, water, or land and water includes the purchase or rental of any interest in any such area of land, water, or land and water.

Additional Act: In 1989, the Commission acquired the additional responsibility of approving project funding under the North American Wetlands Conservation Act. This Act provides Federal funding to encourage partnerships to protect, enhance, restore, and

manage wetlands and other habitats for migratory birds and other fish and wildlife. The North American Wetlands Conservation Council, which was created by the legislation, submits project recommendations to the Commission for funding approval.

2013 Membership

Hon. Sally Jewell
Secretary of the Interior; Chairman

Hon. Mark Pryor
Senator from Arkansas

Hon. Tom Vilsack
Secretary of Agriculture

Hon. John D. Dingell
Representative from Michigan

Hon. Gina McCarthy
Administrator; Environmental Protection Agency

Hon. Robert J. Wittman
Representative from Virginia

Hon. Thad Cochran
Senator from Mississippi

A Eric Alvarez
Secretary to the Commission
Telephone: 703/358-1716



The Migratory Bird Conservation Fund

The Migratory Bird Hunting and Conservation Stamp Act of March 18, 1934 (Duck Stamp Act), created the Migratory Bird Conservation Fund (MBCF) to provide the Department of the Interior with monies to acquire migratory bird habitat.

There are three major sources of funds deposited into the MBCF account. The most well-known source is the revenue received from the sale of Migratory Bird Hunting and Conservation Stamps, commonly known as Duck Stamps, as provided for under the Duck Stamp Act. The other two major sources include appropriations authorized by the Wetlands Loan Act of October 4, 1961, as amended, and import duties collected on arms and ammunition, as provided for under the Emergency Wetlands Resources Act of 1986.

The MBCF finances two Service land acquisition programs that are administered by the Division of Realty. The first program acquires waterfowl habitat in major migratory bird conservation areas under the authority of the Migratory Bird Conservation Act of 1929. The second program acquires small natural wetlands, grasslands, and interests, known as Waterfowl Production Areas, under the authority of the Duck Stamp Act. Waterfowl Production Areas are located primarily in the Prairie Pothole Region of the upper Midwest of the United States.

A total of \$65,379,314 was available for obligation from the MBCF during fiscal year 2013. Collections included \$3,405,108 in reverted Federal Aid Wildlife Restoration grant money. Sequestration claimed \$3,490,991 from MBCF collections.

Disbursements for all MBCF land acquisition functions during the fiscal year totaled \$66,390,697, which included \$1,011,383 in disbursements from prior year obligations. The disbursement total includes \$18,465,238 for the acquisition of land and interests in land totaling 7,409 acres at major migratory bird conservation areas, and \$46,356,554 for land and interests in land totaling 52,895 acres at Waterfowl Production Areas. Printing expenses for the Federal Duck Stamp and other support costs make up the remaining \$1,568,905.



MBCF Approvals for Fiscal Year 2013
(fee unless otherwise indicated)

Area Approvals - Boundary Additions			
<i>Area</i>	<i>State</i>	<i>Approval Date</i>	<i>Acres</i>
Red Rock Lakes NWR (lease)	Montana	06/05/13	489
San Bernard NWR	Texas	03/22/13	264
San Bernard NWR	Texas	09/12/13	2,072
Trinity River NWR	Texas	03/22/13	230
Trinity River NWR	Texas	06/05/13	81
Turnbull NWR	Washington	09/12/13	39,601
Total			42,737

Price Approvals			
<i>Area</i>	<i>State</i>	<i>Approval Date</i>	<i>Acres</i>
Blackwater NWR	Maryland	09/12/13	201
Red Rock Lakes NWR (lease)	Montana	06/05/13	489
San Bernard NWR	Texas	03/22/13	264
San Bernard NWR	Texas	09/12/13	2,072
San Joaquin NWR (easement)	California	03/22/13	367
Trinity River NWR	Texas	03/22/13	230
Trinity River NWR	Texas	06/05/13	81
Turnbull NWR	Washington	09/12/13	405
Upper Ouachita NWR	Louisiana	06/05/13	3,219
Total			7,328

Price Re-Approvals			
<i>Area</i>	<i>State</i>	<i>Approval Date</i>	<i>Acres</i>
Red Rock Lakes NWR (lease)	Montana	06/05/13	5,834
Waccamaw NWR	South Carolina	03/22/13	1,362
Total			7,196

Grand Total			57,261
--------------------	--	--	---------------

**MBCF Land Acquisitions for
Fiscal Year 2013**

*Land Contracted for Purchase,
Permanent Easement, or Lease*

Refuge Acquisition Program

Fee Title Acquisitions

	<i>State</i>	<i>Acres</i>	<i>Cost</i>
Chickasaw NWR	Tennessee	3	\$55,000
Glacial Ridge NWR	Minnesota	2,692	\$1,175,000
Montezuma NWR	New York	625	\$2,377,000
Red Rock Lakes NWR	Montana	75	\$377,000
San Bernard NWR	Texas	1,653	\$2,961,700
Trinity River NWR	Texas	227	\$195,854
Tualatin River NWR	Oregon	24	\$82,500
Upper Ouachita NWR	Louisiana	1,781	\$2,082,712
Total		7,081	\$9,306,766

Permanent Easement Acquisitions

<i>Area</i>	<i>State</i>	<i>Acres</i>	<i>Cost</i>
Grasslands WMA	California	262	\$465,962
San Joaquin River NWR	California	182	\$1,634,040
Tulare Basin WMA	California	123	\$235,000
Total		566	\$2,335,002

Leases

<i>Area</i>	<i>State</i>	<i>Acres</i>	<i>Cost</i>
Dahomey NWR	Mississippi	260	\$10,790
Halfbreed Lake NWR	Montana	640	\$1,879
Lacassine NWR	Louisiana	640	\$25,600
Ouray NWR	Utah	1,486	\$8,870
Panther Swamp NWR	Mississippi	640	\$19,200
St. Catherine Creek NWR	Mississippi	502	\$15,566
Total		4,168	\$81,905

Refuge Acquisition Program Net Total		11,815	\$11,723,673
---	--	---------------	---------------------

**MBCF Land Acquisitions for
Fiscal Year 2013, continued**
*Land Contracted for Purchase,
Permanent Easement, or Lease*

Small Wetlands Acquisition Program

Waterfowl Production Areas

Permanent Easement Acquisitions

<i>State</i>	<i>Acres</i>	<i>Cost</i>
Minnesota	2,454	\$3,165,225
Montana	5,899	\$1,338,721
North Dakota	13,990	\$15,240,020
South Dakota	29,990	\$18,418,558
Total	52,333	\$38,162,524

Fee Title Acquisitions

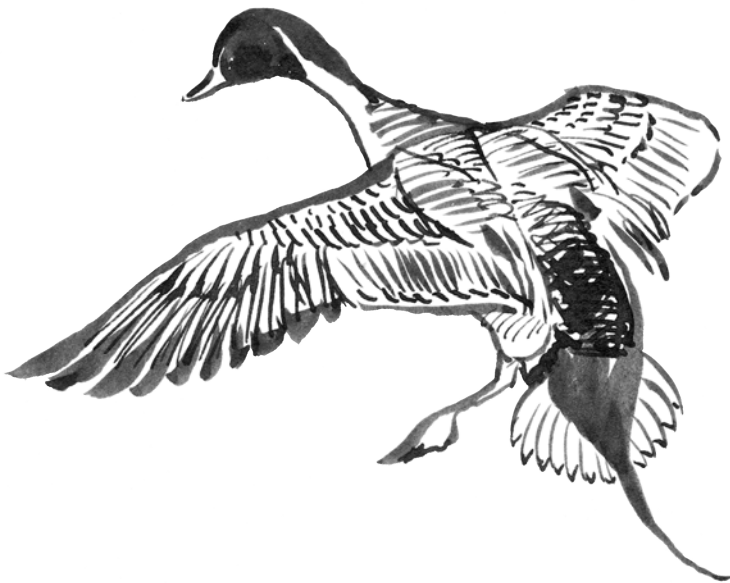
<i>State</i>	<i>Acres</i>	<i>Cost</i>
Iowa	230	\$1,642,200
Minnesota	228	\$879,800
South Dakota	40	\$41,975
Wisconsin	65	\$299,000
Total	563	\$2,862,975

Leases

<i>State</i>	<i>Acres</i>	<i>Cost</i>
Montana	1,560	\$3,846
Total	1,560	\$3,846

Small Wetlands Acquisition Program Net Total **54,455** **\$41,029,345**

Grand Total **66,270** **\$52,753,018**



PINTAIL



National Wildlife Refuge System: New Boundary Addition Approvals for Fiscal Year 2013

Boundary Addition Approvals

Red Rock Lakes National Wildlife Refuge
Beaverhead County, Montana

San Bernard National Wildlife Refuge
Brazoria County, Texas

Trinity River National Wildlife Refuge
Liberty County, Texas

Turnbull National Wildlife Refuge
Spokane County, Washington

CANADA
GOOSE



Red Rock Lakes National Wildlife Refuge

Beaverhead County, Montana

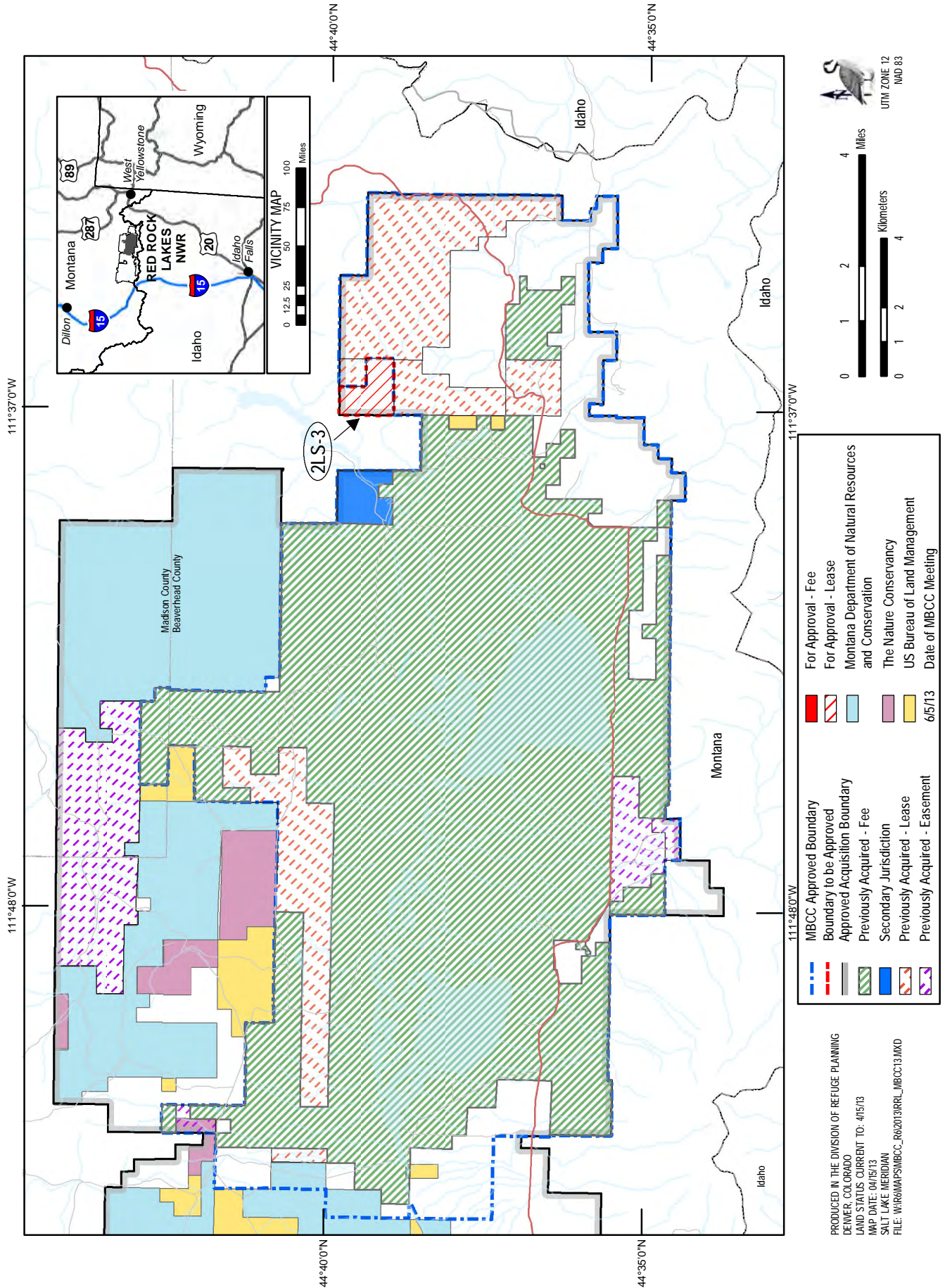
On June 5, 2013, the Migratory Bird Conservation Commission granted boundary approval for 489 additional lease acres at Red Rock Lakes National Wildlife Refuge, and price re-approval for the lease payment on 5,834 acres.

Red Rock Lakes NWR is located approximately 60 miles southeast of Dillon, Montana. The Lower Red Rock Lake area of the Refuge supports one of the highest densities of breeding lesser

scaup on the continent. The Refuge and Centennial Valley support the highest density of breeding trumpeter swans in the tri-state flock (Idaho, Montana, Wyoming). Swans in the Refuge and Centennial Valley produce more cygnets than any other single area in the western United States.

The boundary addition squares off the Refuge boundary which allows more consistent management of the area.





San Bernard National Wildlife Refuge

Brazoria and Matagorda Counties, Texas

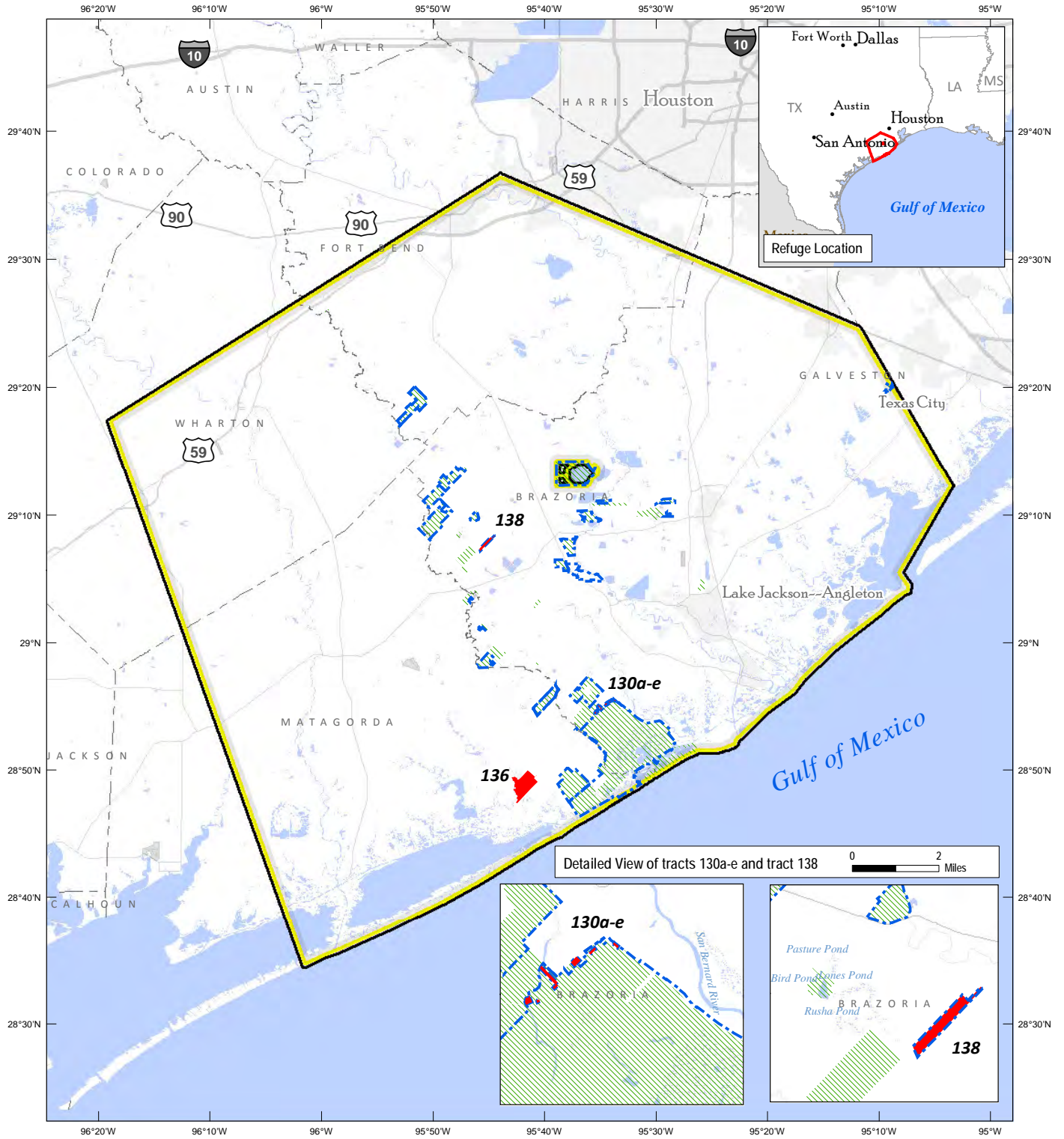
During Fiscal Year 2013, the Migratory Bird Conservation Commission granted boundary and price approval for the fee title acquisition of 2,336.37 acres at the Austin's Woods Unit of the San Bernard National Wildlife Refuge. This included Commission boundary and price approvals of 264.06 acres in March, and 2,072.31 acres in September.

The Austin's Woods Unit is located 50 miles south of Houston, Texas. It is a productive and valuable wetland complex that provides habitat for migrating, wintering, and resident waterfowl, wading birds, neo-tropical migratory birds, and other wetland-dependent

wildlife species. Thousands of waterfowl winter in the area, including mottled ducks, mallards, northern pintails, gadwalls, widgeons, northern shovelers, blue – and green-winged teal, black-bellied whistling ducks, and ruddy ducks.

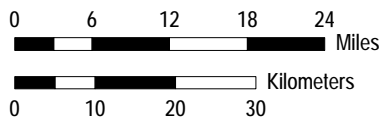
The acquired tracts are in the Central and South-central part of the Austin's Woods Unit. The Service will manage the land as habitat for waterfowl, wading birds, neo-tropical migrants, and other wildlife. These acquisitions further the objectives of the North American Waterfowl Management Plan in assuring the future of the nation's waterfowl resource.



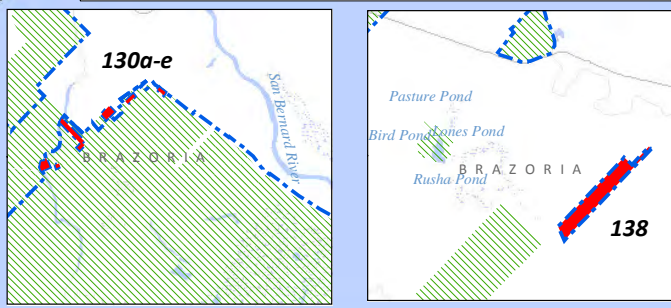


- MBCC Approved Boundary
 - Boundary to be Approved
 - Approved Acquisition Boundary
 - Focus Area Boundary
 - Previously Acquired - Fee
 - Previously Acquired - Easement
 - For Approval - Fee
 - For Approval - Easement
- 9/12/2013 Date of MBCC Meeting

PRODUCED IN THE DIVISION OF REALTY
 ARLINGTON, VIRGINIA
 LAND STATUS CURRENT TO: 9/12/13
 MAP DATE: 6/5/2014
 BASEMAP: ESRI / DOE RENEWABLE ENERGY ATLAS
 WEB MERCATOR PROJECTION
 NAD 83



Detailed View of tracts 130a-e and tract 138



Trinity River National Wildlife Refuge

Liberty County, Texas

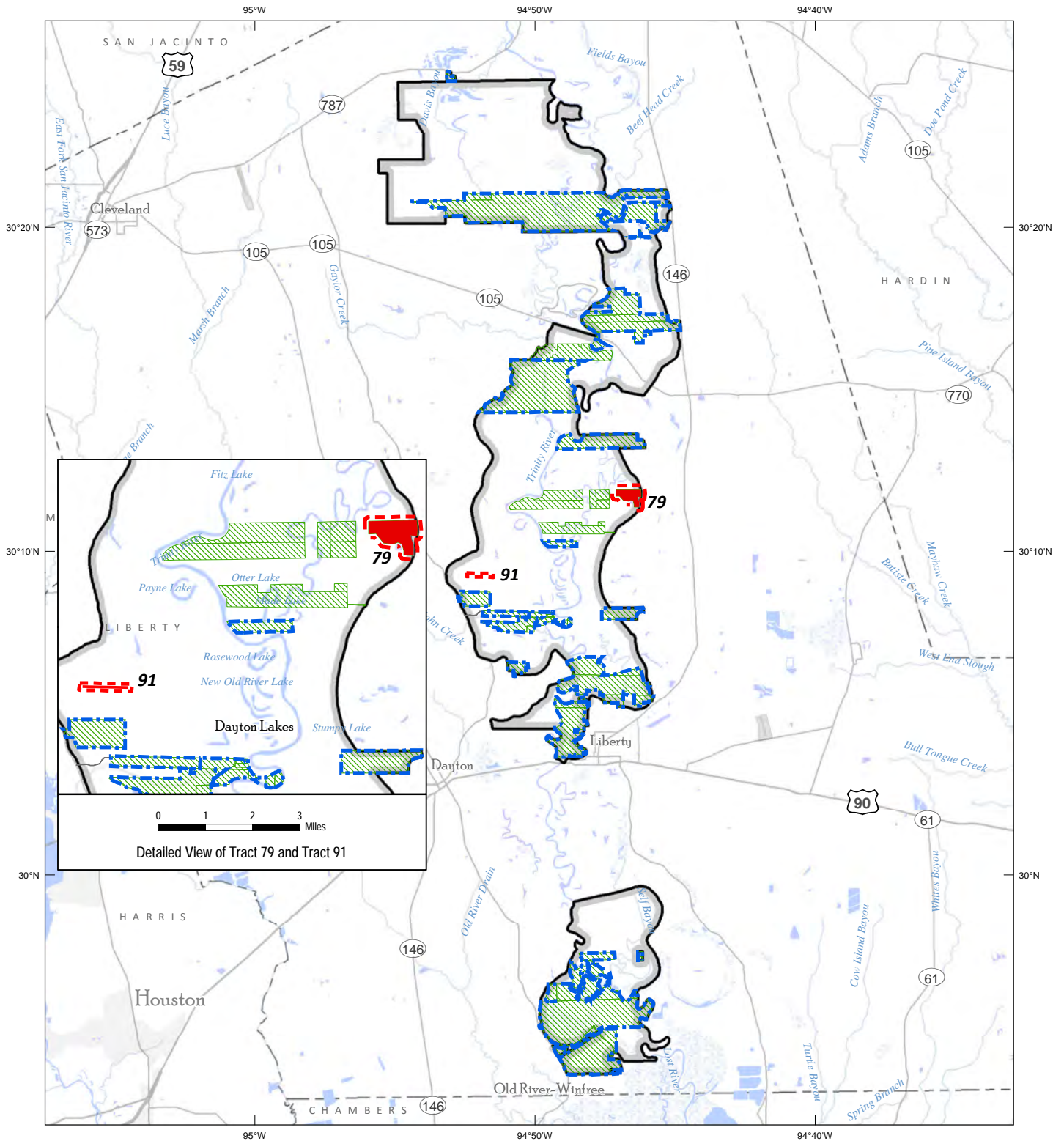
During Fiscal Year 2013, the Migratory Bird Conservation Commission granted boundary and price approval for the fee title acquisition of 311.32 acres at Trinity River National Wildlife Refuge. This included Commission boundary and price approvals of 230 acres in March, and 81.32 acres in June.

Trinity River NWR is located 45 miles northeast of Houston in Liberty County, Texas. The Refuge protects important remnant bottomland hardwood and associated habitats for migrating, wintering, and breeding waterfowl, including wood duck, mallard, gadwall,

American widgeon, green – and blue-winged teal, and mottled duck. Mature cavity trees provide important nesting habitat for wood ducks and black-bellied whistling ducks.

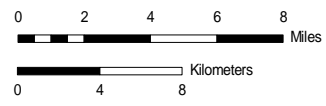
The 311.32 acres approved for acquisition contain flood-prone bottomland hardwood habitat. The Service will manage the tract to protect important waterfowl habitat in the Trinity River floodplain. The Service also plans to offer compatible public use such as hunting, wildlife observation, environmental education, and interpretation.





-  MBCC Approved Boundary
-  Boundary to be Approved
-  Approved Acquisition Boundary
-  Previously Acquired - Fee
-  Previously Acquired - Easement
-  For Approval - Fee
-  For Approval - Easement

PRODUCED IN THE DIVISION OF REALTY
 ARLINGTON, VIRGINIA
 LAND STATUS CURRENT TO: 9/12/13
 MAP DATE: 6/26/2014
 BASEMAP: ESRI / DOE RENEWABLE ENERGY ATLAS
 WEB MERCATOR PROJECTION
 NAD 83



Turnbull National Wildlife Refuge

Spokane County, Washington

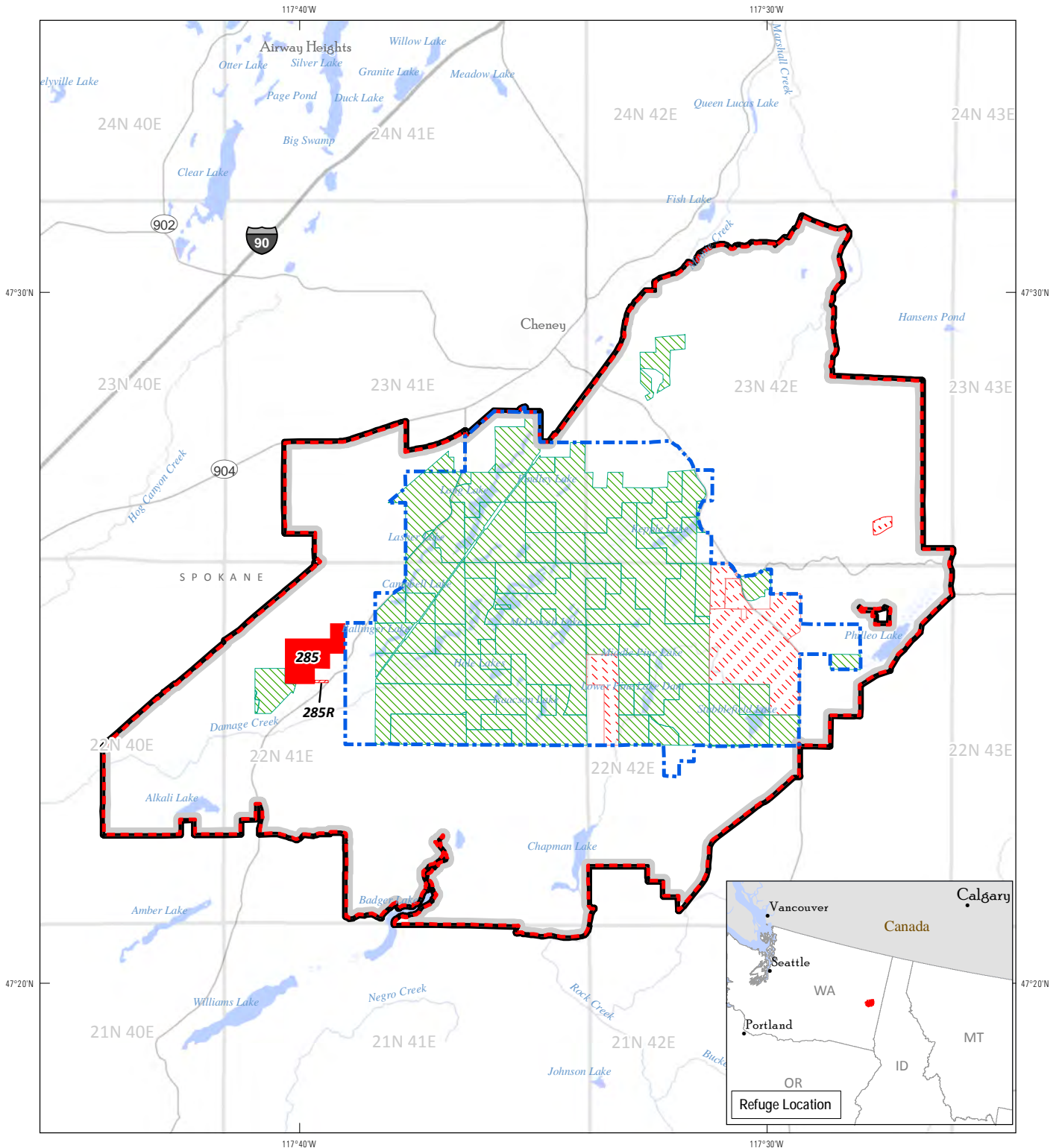
On September 12, 2013, the Migratory Bird Conservation Commission granted boundary approval for an additional 405.38 acres at Turnbull National Wildlife Refuge, including a 60' access easement.

Turnbull NWR is located approximately 17 miles southwest of Spokane, Washington. The Refuge serves as a breeding ground for migratory birds, primarily diving ducks such as canvasback and redhead. It contains

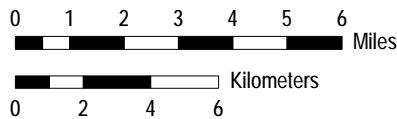
a diverse landscape of the channeled scablands – a mosaic of ponderosa pine, wetlands, and shrub-steppe habitats. This acquisition contains more than 57 acres of drained wetlands which the Service plans to restore and manage for waterfowl and other wildlife.

The boundary addition expands the Refuge's footprint to 39,601 acres, of which up to 12,000 acres may be acquired.





PRODUCED IN THE DIVISION OF REALTY
 ARLINGTON, VIRGINIA
 LAND STATUS CURRENT TO: 5/5/13
 MAP DATE: 8/22/2013
 BASEMAP: ESRI / DOE RENEWABLE ENERGY ATLAS
 WEB MERCATOR PROJECTION
 NAD 83



- MBCC Approved Boundary
 - Boundary to be Approved
 - Approved Acquisition Boundary
 - Previously Acquired - Fee
 - Previously Acquired - Easement
 - For Approval - Fee
 - For Approval - Easement
- 9/12/2013 Date of MBCC Meeting



National Migratory Bird Refuges and Waterfowl Production Areas

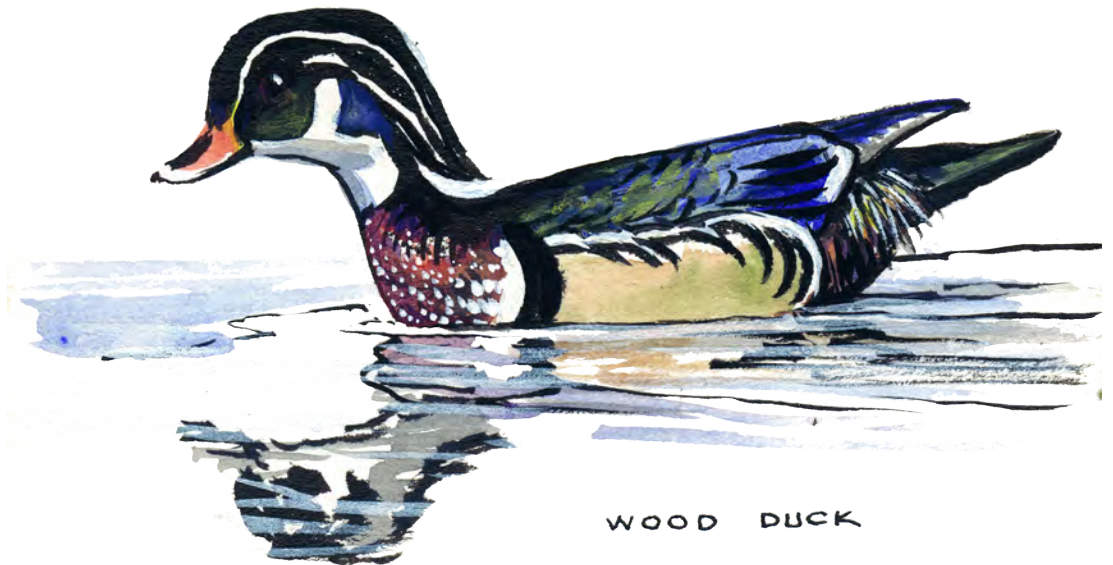
The information contained in this report includes those acquisitions and dispositions of land and interests therein that are purchased with Migratory Bird Conservation Fund monies or acquired under the authority of the Migratory Bird Conservation Act. It also includes other migratory bird areas such as those that are transferred to the Fish and Wildlife Service under the authority of Public Law 80-537 to carry out a migratory bird management program.

Notes on Tables 1 and 2

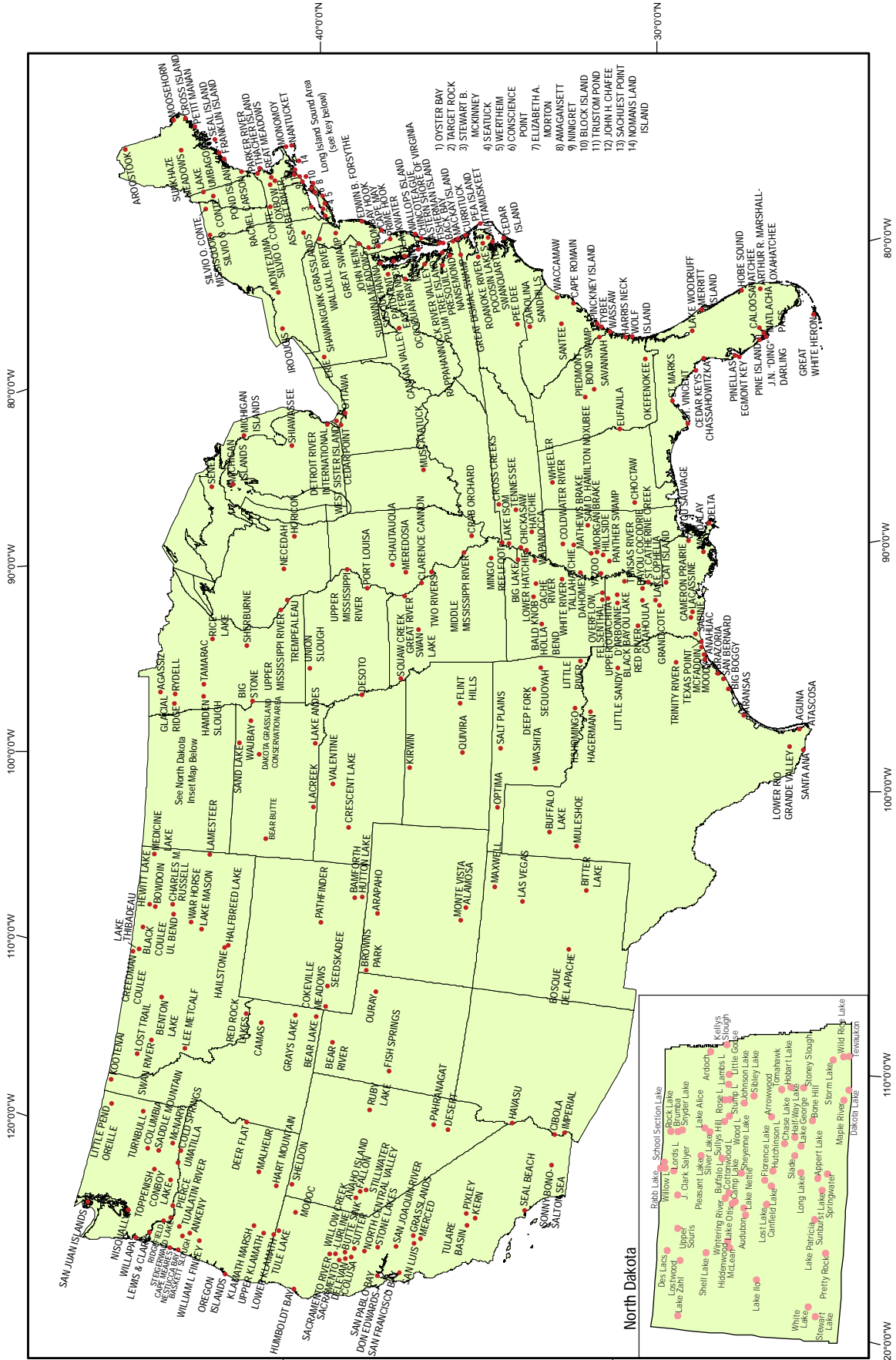
In an ongoing effort to improve data quality, the figures in Tables 1 and 2 may show minor changes from previous annual reports. Lands in which the Service previously acquired a less-than-fee interest (leases and easements) may be purchased in fee during the year; so the number of easement or lease acres will show a decrease and the number of purchased acres will show an increase. The acreage appearing in the Approvals section of this report will not appear in Tables 1 or 2 until after the Service

acquires the tracts and expends the funds. Also, a newly approved refuge will not appear on Table 1 until the Service acquires the tract(s).

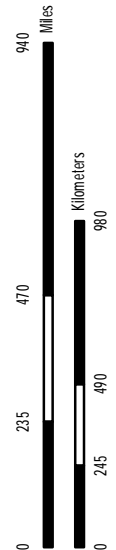
For information on all lands and interests under U.S. Fish and Wildlife Service control, refer to the Annual Report of Lands Under Control of the U.S. Fish and Wildlife Service. This report is available from the U.S. Fish and Wildlife Service, Division of Realty at <www.fws.gov/refuges/realty>, or by calling 703/358-1713.



National Migratory Bird Refuge Areas Map



WGS84



PRODUCED IN THE DIVISION OF REALTY
WASHINGTON, D.C.
LAND STATUS CURRENT TO: 9/30/2008
MAP DATE: 4/2/2013
BASEMAP: ESRI
FILE: mbc\c2012_lwr8\mbra1

Table 1. National Migratory Bird Refuges

State and Unit	FISCAL YEAR MBCF ACQUISITION				CUMULATIVE TOTALS AT END OF FISCAL YEAR						
	Purchased		Easement or Lease		MBCF				All Other Acres	Total Acres	
	Acres	Cost	Acres	Cost	Acres	Cost	Easement or Lease	Cost			
Alabama											
Choctaw	0.00	\$0.00	0.00	\$0.00	0.00	\$0.00	0.00	\$0.00	4,218.00	4,218.00	
Eufaula (1)	0.00	\$0.00	0.00	\$0.00	0.00	\$0.00	0.00	\$0.00	7,953.19	7,953.19	
FSA Interest AL ***	0.00	\$0.00	0.00	\$0.00	0.00	\$0.00	0.00	\$0.00	842.64	842.64	
Wheeler	0.00	\$0.00	0.00	\$0.00	0.00	\$0.00	0.00	\$0.00	34,430.66	34,430.66	
State Total 3	0.00	\$0.00	0.00	\$0.00	0.00	\$0.00	0.00	\$0.00	47,444.49	47,444.49	
Arizona											
Cibola (2)	0.00	\$0.00	0.00	\$0.00	0.00	\$0.00	0.00	\$0.00	13,199.34	13,199.34	
Havasu (2)	0.00	\$0.00	0.00	\$0.00	0.00	\$0.00	0.00	\$0.00	30,279.82	30,279.82	
Imperial (2)	0.00	\$0.00	0.00	\$0.00	0.00	\$0.00	0.00	\$0.00	17,809.76	17,809.76	
State Total 3	0.00	\$0.00	0.00	\$0.00	0.00	\$0.00	0.00	\$0.00	61,288.92	61,288.92	
Arkansas											
Bald Knob	0.00	\$0.00	0.00	\$0.00	4,748.40	\$3,427,000.00	0.00	\$0.00	10,273.95	15,022.35	
Big Lake	0.00	\$0.00	0.00	\$0.00	562.91	\$31,854.69	0.25	\$3.00	10,483.79	11,046.95	
Cache River	0.00	\$0.00	0.00	\$0.00	49,180.98	\$48,351,291.92	0.00	\$0.00	19,478.40	68,659.38	
Felsenthal	0.00	\$0.00	0.00	\$0.00	0.00	\$0.00	0.00	\$0.00	64,902.14	64,902.14	
FSA Interest AR ***	0.00	\$0.00	0.00	\$0.00	0.00	\$0.00	0.00	\$0.00	3,461.90	3,461.90	
Holla Bend	0.00	\$0.00	0.00	\$0.00	690.45	\$336,903.00	0.00	\$5,175.00	5,608.58	6,299.03	
Overflow	0.00	\$0.00	0.00	\$0.00	13,416.75	\$10,943,020.50	9.60	\$0.00	0.00	13,426.35	
Wapanocca	0.00	\$0.00	0.00	\$0.00	5,629.25	\$1,528,416.00	0.00	\$0.00	0.00	5,629.25	
White River	0.00	\$0.00	0.00	\$0.00	10,684.67	\$5,923,070.37	252.87	\$22.00	149,220.71	160,158.25	
State Total 8	0.00	\$0.00	0.00	\$0.00	84,913.41	\$70,541,556.48	262.72	\$5,200.00	263,429.47	348,605.60	
California											
Butte Sink	0.00	\$0.00	0.00	\$0.00	514.98	\$1,650,700.00	10,310.64	\$12,816,903.00	217.88	11,043.50	
Cibola (3)*	0.00	\$0.00	0.00	\$0.00	0.00	\$0.00	0.00	\$0.00	5,245.33	5,245.33	
Colusa	0.00	\$0.00	0.00	\$0.00	2,384.74	\$107,313.30	0.00	\$0.00	1,655.24	4,039.98	
Delevan	0.00	\$0.00	0.00	\$0.00	5,796.54	\$2,345,739.00	0.00	\$175,000.00	0.00	5,796.54	
Don Edwards San Fran. Bay	0.00	\$0.00	0.00	\$0.00	0.00	\$0.00	0.00	\$0.00	29,416.57	29,416.57	
FSA Interest CA ***	0.00	\$0.00	0.00	\$0.00	0.00	\$0.00	0.00	\$0.00	6,673.24	6,673.24	
Grasslands	0.00	\$0.00	262.00	\$465,962.00	6,442.28	\$9,158,896.00	73,374.80	\$41,260,421.00	13,866.17	93,683.25	
Havasu (3)*	0.00	\$0.00	0.00	\$0.00	0.00	\$0.00	0.00	\$0.00	7,235.34	7,235.34	
Humboldt Bay	0.00	\$0.00	0.00	\$0.00	2,884.34	\$6,492,650.00	0.00	\$0.00	667.55	3,551.89	
Imperial (3)*	0.00	\$0.00	0.00	\$0.00	0.00	\$0.00	0.00	\$0.00	8,198.19	8,198.19	
Kern	0.00	\$0.00	0.00	\$0.00	10,543.86	\$579,912.00	0.00	\$0.00	705.31	11,249.17	
Lower Klamath (4)	0.00	\$0.00	0.00	\$0.00	4,530.53	\$3,390,123.00	0.00	\$0.00	39,764.02	44,294.55	
Merced	0.00	\$0.00	0.00	\$0.00	3,803.82	\$2,180,000.00	0.00	\$0.00	1.76	3,805.58	
Modoc	0.00	\$0.00	0.00	\$0.00	5,359.58	\$1,077,634.19	0.00	\$0.00	1,711.65	7,071.23	
North Central Valley	0.00	\$0.00	0.00	\$0.00	1,033.28	\$4,445,531.00	9,446.32	\$14,729,148.00	7,365.52	17,845.12	
Pixley	0.00	\$0.00	0.00	\$0.00	0.00	\$0.00	0.00	\$0.00	7,282.91	7,282.91	
Sacramento	0.00	\$0.00	0.00	\$0.00	10,775.61	\$150,498.00	0.00	\$0.00	43.39	10,819.00	
Sacramento River	0.00	\$0.00	0.00	\$0.00	126.40	\$145,000.00	0.00	\$0.00	11,495.69	11,622.09	
San Joaquin River	0.00	\$0.00	181.56	\$1,634,040.00	1,239.18	\$7,030,819.00	181.56	\$1,634,040.00	9,781.43	11,202.17	
San Luis	0.00	\$0.00	0.00	\$0.00	7,422.41	\$2,171,055.00	703.00	\$2,284,000.00	10,337.00	18,462.41	
San Pablo Bay	0.00	\$0.00	0.00	\$0.00	248.00	\$243,400.00	0.00	\$0.00	16,251.72	16,499.72	
Seal Beach	0.00	\$0.00	0.00	\$0.00	0.00	\$0.00	0.00	\$0.00	910.71	910.71	
Sonny Bono Salton Sea	0.00	\$0.00	0.00	\$0.00	9,342.14	\$294,461.80	637.00	\$1,089.27	27,679.73	37,658.87	
Stone Lakes	0.00	\$0.00	0.00	\$0.00	214.61	\$1,240,000.00	138.56	\$365,800.00	6,188.40	6,541.57	
Sutter	0.00	\$0.00	0.00	\$0.00	2,590.16	\$291,281.80	0.00	\$3,850.00	0.00	2,590.16	
Tulare Basin	0.00	\$0.00	122.90	\$235,000.00	0.00	\$0.00	3,560.50	\$6,646,518.00	89.44	3,649.94	
Tule Lake	0.00	\$0.00	0.00	\$0.00	0.00	\$0.00	0.00	\$0.00	39,116.58	39,116.58	
Willow Creek-Lurline	0.00	\$0.00	0.00	\$0.00	0.00	\$0.00	5,786.70	\$7,173,433.00	77.41	5,864.11	
State Total 24	0.00	\$0.00	566.46	\$2,335,002.00	75,252.46	\$42,995,014.09	104,139.08	\$87,090,202.27	251,978.18	431,369.72	
Colorado											
Alamosa	0.00	\$0.00	0.00	\$0.00	10,904.78	\$2,377,463.16	0.00	\$24,035.90	1,121.59	12,026.37	
Arapaho	0.00	\$0.00	0.00	\$0.00	17,811.33	\$4,798,286.00	23.23	\$35,358.66	7,686.84	25,521.40	
Browns Park	0.00	\$0.00	0.00	\$0.00	5,275.63	\$614,976.00	0.00	\$68,118.76	6,874.25	12,149.88	
FSA Interest CO ***	0.00	\$0.00	0.00	\$0.00	0.00	\$0.00	0.00	\$0.00	1,206.64	1,206.64	
Monte Vista	0.00	\$0.00	0.00	\$0.00	13,950.66	\$2,241,750.00	0.00	\$0.00	883.33	14,833.99	
State Total 4	0.00	\$0.00	0.00	\$0.00	47,942.40	\$10,032,475.16	23.23	\$127,513.32	17,772.65	65,738.28	
Connecticut											
Stewart B. McKinney	0.00	\$0.00	0.00	\$0.00	361.24	\$2,263,560.00	0.00	\$0.00	585.94	947.18	
State Total 1	0.00	\$0.00	0.00	\$0.00	361.24	\$2,263,560.00	0.00	\$0.00	585.94	947.18	

Table 1. National Migratory Bird Refuges

State and Unit	FISCAL YEAR MBCF ACQUISITION				CUMULATIVE TOTALS AT END OF FISCAL YEAR						
	Purchased		Easement or Lease		MBCF				All Other Acres	Total Acres	
	Acres	Cost	Acres	Cost	Acres	Cost	Easement or Lease	Cost			
Delaware											
Bombay Hook	0.00	\$0.00	0.00	\$0.00	15,551.48	\$2,074,738.56	0.00	\$1.00	779.28	16,330.76	
FSA Interest DE ***	0.00	\$0.00	0.00	\$0.00	0.00	\$0.00	0.00	\$0.00	2.60	2.60	
Prime Hook	0.00	\$0.00	0.00	\$0.00	8,285.70	\$3,735,464.16	79.19	\$5,346.20	1,797.93	10,162.82	
State Total	2	0.00	0.00	0.00	23,837.18	\$5,810,202.72	79.19	\$5,347.20	2,579.81	26,496.18	
Florida											
Arthur R. Marshall	0.00	\$0.00	0.00	\$0.00	2,549.77	\$118,511.97	0.00	\$0.00	141,404.00	143,953.77	
Caloosahatchee	0.00	\$0.00	0.00	\$0.00	0.00	\$0.00	0.00	\$0.00	40.00	40.00	
Cedar Keys	0.00	\$0.00	0.00	\$0.00	0.00	\$0.00	0.00	\$0.00	891.15	891.15	
Chassahowitzka	0.00	\$0.00	0.00	\$0.00	22,556.82	\$267,529.26	0.00	\$0.00	8,286.09	30,842.91	
Egmont Key	0.00	\$0.00	0.00	\$0.00	0.00	\$0.00	0.00	\$0.00	328.30	328.30	
FSA Interest FL ***	0.00	\$0.00	0.00	\$0.00	0.00	\$0.00	0.00	\$0.00	3,057.15	3,057.15	
Great White Heron	0.00	\$0.00	0.00	\$0.00	1,326.54	\$906,195.00	0.00	\$0.00	116,395.99	117,722.53	
Hobe Sound	0.00	\$0.00	0.00	\$0.00	0.00	\$0.00	0.00	\$0.00	1,035.63	1,035.63	
J. N. Ding Darling	0.00	\$0.00	0.00	\$0.00	541.98	\$372,370.00	0.00	\$0.00	5,864.81	6,406.79	
Lake Woodruff	0.00	\$0.00	0.00	\$0.00	18,413.39	\$1,340,310.75	0.00	\$0.00	3,145.63	21,559.02	
Matlacha Pass	0.00	\$0.00	0.00	\$0.00	0.00	\$0.00	0.00	\$0.00	564.73	564.73	
Merritt Island	0.00	\$0.00	0.00	\$0.00	0.00	\$0.00	0.00	\$0.00	139,196.47	139,196.47	
Okefenokee (1)	0.00	\$0.00	0.00	\$0.00	0.00	\$0.00	0.00	\$0.00	3,694.92	3,694.92	
Pine Island	0.00	\$0.00	0.00	\$0.00	0.00	\$0.00	0.00	\$0.00	608.48	608.48	
Pinellas	0.00	\$0.00	0.00	\$0.00	0.00	\$0.00	0.00	\$0.00	394.35	394.35	
St. Marks	0.00	\$0.00	0.00	\$0.00	30,742.44	\$101,704.79	0.00	\$0.00	40,828.07	71,570.51	
St. Vincent	0.00	\$0.00	0.00	\$0.00	12,358.20	\$2,035,000.00	0.00	\$0.00	131.73	12,489.93	
State Total	16	0.00	0.00	0.00	88,489.14	\$5,141,621.77	0.00	\$0.00	465,867.50	554,356.64	
Georgia											
Bond Swamp	0.00	\$0.00	0.00	\$0.00	256.41	\$1,000,000.00	0.00	\$0.00	6,625.90	6,882.31	
Eufaula (5)*	0.00	\$0.00	0.00	\$0.00	0.00	\$0.00	0.00	\$0.00	3,231.00	3,231.00	
FSA Interest GA ***	0.00	\$0.00	0.00	\$0.00	0.00	\$0.00	0.00	\$0.00	4,952.93	4,952.93	
Harris Neck	0.00	\$0.00	0.00	\$0.00	0.00	\$0.00	0.00	\$0.00	2,822.68	2,822.68	
Okefenokee (6)*	0.00	\$0.00	0.00	\$0.00	345,208.87	\$867,318.12	0.00	\$0.00	54,425.58	399,634.45	
Piedmont	0.00	\$0.00	0.00	\$0.00	473.97	\$44,000.00	0.00	\$0.00	34,491.93	34,965.90	
Savannah (7)	0.00	\$0.00	0.00	\$0.00	8,013.39	\$1,705,352.40	0.00	\$0.00	6,150.09	14,163.48	
Wassaw	0.00	\$0.00	0.00	\$0.00	0.00	\$0.00	0.00	\$0.00	10,053.30	10,053.30	
Wolf Island	0.00	\$0.00	0.00	\$0.00	4,587.82	\$120,813.52	0.00	\$0.00	538.00	5,125.82	
State Total	6	0.00	0.00	0.00	358,540.46	\$3,737,484.04	0.00	\$0.00	123,291.41	481,831.87	
Idaho											
Bear Lake	0.00	\$0.00	0.00	\$0.00	626.57	\$212,279.30	0.00	\$1.00	17,582.09	18,208.66	
Camas	0.00	\$0.00	0.00	\$0.00	10,437.05	\$202,700.84	0.00	\$0.00	139.88	10,576.93	
Deer Flat (4)	0.00	\$0.00	0.00	\$0.00	242.89	\$26,415.50	0.00	\$0.00	11,172.06	11,414.95	
FSA Interest ID ***	0.00	\$0.00	0.00	\$0.00	0.00	\$0.00	0.00	\$0.00	1,300.57	1,300.57	
Grays Lake	0.00	\$0.00	0.00	\$0.00	4,038.18	\$1,843,000.00	32.49	\$4,518.30	16,054.41	20,125.08	
Kootenai	0.00	\$0.00	0.00	\$0.00	2,774.15	\$708,100.00	0.00	\$0.00	0.14	2,774.29	
State Total	5	0.00	0.00	0.00	18,118.84	\$2,992,495.64	32.49	\$4,519.30	46,249.15	64,400.48	
Illinois											
Chautauqua	0.00	\$0.00	0.00	\$0.00	44.54	\$2,525.38	0.00	\$0.00	6,543.45	6,587.99	
Crab Orchard	0.00	\$0.00	0.00	\$0.00	651.07	\$0.00	0.00	\$0.00	43,324.46	43,975.53	
FSA Interest IL ***	0.00	\$0.00	0.00	\$0.00	0.00	\$0.00	0.00	\$0.00	806.40	806.40	
Great River (8)	0.00	\$0.00	0.00	\$0.00	1,559.87	\$353,202.72	0.00	\$0.00	6,410.76	7,970.63	
Hackmatack	0.00	\$0.00	0.00	\$0.00	0.00	\$0.00	0.00	\$0.00	13.55	13.55	
Meredosia	0.00	\$0.00	0.00	\$0.00	0.00	\$0.00	0.00	\$0.00	3,400.80	3,400.80	
Middle Mississippi River (8)	0.00	\$0.00	0.00	\$0.00	0.00	\$0.00	0.00	\$0.00	6,398.94	6,398.94	
Port Louisa (19)	0.00	\$0.00	0.00	\$0.00	0.00	\$0.00	0.00	\$0.00	1,470.89	1,470.89	
Two Rivers (8)	0.00	\$0.00	0.00	\$0.00	796.17	\$346,943.75	0.00	\$0.00	7,237.03	8,033.20	
State Total	8	0.00	0.00	0.00	3,051.65	\$702,671.85	0.00	\$0.00	75,606.28	78,657.93	
Indiana											
FSA Interest IN ***	0.00	\$0.00	0.00	\$0.00	0.00	\$0.00	0.00	\$0.00	689.20	689.20	
Muscatatuck	0.00	\$0.00	0.00	\$0.00	7,713.53	\$3,582,837.72	0.00	\$0.00	88.69	7,802.22	
State Total	1	0.00	0.00	0.00	7,713.53	\$3,582,837.72	0.00	\$0.00	777.89	8,491.42	
Iowa											
Desoto (10)	0.00	\$0.00	0.00	\$0.00	3,444.79	\$639,117.53	0.00	\$0.00	57.98	3,502.77	
FSA Interest IA ***	0.00	\$0.00	0.00	\$0.00	0.00	\$0.00	0.00	\$0.00	566.17	566.17	
Port Louisa (11)*	0.00	\$0.00	0.00	\$0.00	47.50	\$16,000.00	0.00	\$0.00	22,596.86	22,644.36	

Table 1. National Migratory Bird Refuges

State and Unit	FISCAL YEAR MBCF ACQUISITION				CUMULATIVE TOTALS AT END OF FISCAL YEAR						
	Purchased		Easement or Lease		MBCF				All Other Acres	Total Acres	
	Acres	Cost	Acres	Cost	Acres	Cost	Easement or Lease	Cost			
Iowa (Continued)											
Union Slough	0.00	\$0.00	0.00	\$0.00	2,845.24	\$210,406.69	70.70	\$608.00	0.00	2,915.94	
State Total	2	\$0.00	\$0.00	\$0.00	6,337.53	\$865,524.22	70.70	\$608.00	23,221.01	29,629.24	
Kansas											
Flint Hills	0.00	\$0.00	0.00	\$0.00	0.00	\$0.00	0.00	\$0.00	18,463.36	18,463.36	
FSA Interest KS ***	0.00	\$0.00	0.00	\$0.00	0.00	\$0.00	0.00	\$0.00	116.50	116.50	
Kirwin	0.00	\$0.00	0.00	\$0.00	0.00	\$0.00	0.00	\$0.00	10,778.00	10,778.00	
Quivira	0.00	\$0.00	0.00	\$0.00	21,820.10	\$2,059,238.00	0.00	\$0.00	199.20	22,019.30	
State Total	3	\$0.00	\$0.00	\$0.00	21,820.10	\$2,059,238.00	0.00	\$0.00	29,557.06	51,377.16	
Kentucky											
Reelfoot (14)	0.00	\$0.00	0.00	\$0.00	2,039.64	\$418,450.15	0.00	\$0.00	0.00	2,039.64	
State Total	1	\$0.00	\$0.00	\$0.00	2,039.64	\$418,450.15	0.00	\$0.00	0.00	2,039.64	
Louisiana											
Bayou Cocodrie	0.00	\$0.00	0.00	\$0.00	4,913.60	\$3,697,578.00	0.00	\$0.00	9,804.91	14,718.51	
Bayou Sauvage	0.00	\$0.00	0.00	\$0.00	2,027.40	\$1,112,500.00	0.00	\$0.00	22,623.33	24,650.73	
Black Bayou Lake	0.00	\$0.00	0.00	\$0.00	88.60	\$150,000.00	0.00	\$0.00	4,433.71	4,522.31	
Cameron Prairie	0.00	\$0.00	0.00	\$0.00	9,621.30	\$5,090,650.00	0.00	\$0.00	14,926.73	24,548.03	
Cat Island	0.00	\$0.00	0.00	\$0.00	1,641.44	\$2,576,000.00	0.00	\$0.00	8,832.91	10,474.35	
Catahoula	0.00	\$0.00	0.00	\$0.00	14,869.86	\$2,190,082.25	0.00	\$0.00	10,154.05	25,023.91	
D'Arbonne	0.00	\$0.00	0.00	\$0.00	0.00	\$0.00	0.00	\$0.00	17,419.63	17,419.63	
Delta	0.00	\$0.00	0.00	\$0.00	34,462.73	\$233,324.17	0.00	\$0.00	14,338.68	48,801.41	
FSA Interest LA ***	0.00	\$0.00	0.00	\$0.00	0.00	\$0.00	0.00	\$0.00	10,882.39	10,882.39	
Grand Cote	-199.81	\$0.00	0.00	\$0.00	1,682.75	\$876,173.00	0.00	\$0.00	4,331.58	6,014.33	
Lacassine	-5.87	\$0.00	0.00	\$0.00	9,880.42	\$999,156.43	640.00	\$337,600.00	23,839.97	34,360.39	
Lake Ophelia	0.00	\$0.00	0.00	\$0.00	3,064.90	\$1,451,930.00	0.00	\$0.00	14,496.56	17,561.46	
Mandalay	0.00	\$0.00	0.00	\$0.00	0.00	\$0.00	0.00	\$0.00	4,619.73	4,619.73	
Red River	0.00	\$0.00	0.00	\$0.00	3,850.96	\$3,992,901.00	0.00	\$0.00	9,538.80	13,389.76	
Sabine	0.00	\$0.00	0.00	\$0.00	566.66	\$14,000.51	0.00	\$0.00	125,223.42	125,790.08	
Tensas River	0.00	\$0.00	0.00	\$0.00	1,511.89	\$1,220,227.00	0.00	\$0.00	74,760.78	76,272.67	
Upper Ouachita	1,781.33	\$2,082,712.00	0.00	\$0.00	46,591.81	\$29,613,514.00	0.00	\$1,823,540.00	2,030.14	48,621.95	
State Total	16	\$1,575.65	\$2,082,712.00	\$0.00	134,774.32	\$53,218,036.36	640.00	\$2,161,140.00	372,257.32	507,671.64	
Maine											
Aroostook	0.00	\$0.00	0.00	\$0.00	0.00	\$0.00	0.00	\$0.00	5,252.25	5,252.25	
Cross Island	0.00	\$0.00	0.00	\$0.00	0.00	\$0.00	0.00	\$0.00	1,723.10	1,723.10	
Franklin Island	0.00	\$0.00	0.00	\$0.00	0.00	\$0.00	0.00	\$0.00	11.94	11.94	
FSA Interest ME ***	0.00	\$0.00	0.00	\$0.00	0.00	\$0.00	0.00	\$0.00	622.08	622.08	
Moosehorn	0.00	\$0.00	0.00	\$0.00	19,782.52	\$2,023,308.59	0.00	\$0.00	9,557.82	29,340.34	
Petit Manan	0.00	\$0.00	0.00	\$0.00	1,472.30	\$350,000.00	0.00	\$0.00	4,940.76	6,413.06	
Pond Island	0.00	\$0.00	0.00	\$0.00	0.00	\$0.00	0.00	\$0.00	10.00	10.00	
Rachel Carson	0.00	\$0.00	0.00	\$0.00	2,870.31	\$1,539,347.75	2.97	\$3,100.00	2,676.03	5,549.31	
Seal Island	0.00	\$0.00	0.00	\$0.00	0.00	\$0.00	0.00	\$0.00	65.00	65.00	
Sunkhaze Meadows	0.00	\$0.00	0.00	\$0.00	1,170.00	\$250,500.00	0.00	\$0.00	10,265.71	11,435.71	
Umbagog (36)*	0.00	\$0.00	0.00	\$0.00	3,993.24	\$1,926,119.70	0.00	\$0.00	3,937.58	7,930.82	
State Total	9	\$0.00	\$0.00	\$0.00	29,288.37	\$6,089,276.04	2.97	\$3,100.00	39,062.27	68,353.61	
Maryland											
Blackwater	0.00	\$0.00	0.00	\$0.00	20,491.19	\$12,435,183.86	0.00	\$0.00	7,692.27	28,183.46	
Chincoteague (16)*	0.00	\$0.00	0.00	\$0.00	417.81	\$13,780.42	0.00	\$0.00	0.00	417.81	
Eastern Neck	0.00	\$0.00	0.00	\$0.00	2,286.27	\$1,606,145.09	0.00	\$0.00	0.00	2,286.27	
FSA Interest MD ***	0.00	\$0.00	0.00	\$0.00	0.00	\$0.00	0.00	\$0.00	67.94	67.94	
Martin (16)	0.00	\$0.00	0.00	\$0.00	1,853.57	\$61,027.00	0.00	\$0.00	2,569.86	4,423.43	
Patuxent	0.00	\$0.00	0.00	\$0.00	431.93	\$7,667.57	0.00	\$0.00	12,409.00	12,840.93	
Susquehanna	0.00	\$0.00	0.00	\$0.00	0.00	\$0.00	0.00	\$0.00	3.79	3.79	
State Total	5	\$0.00	\$0.00	\$0.00	25,480.77	\$14,123,803.94	0.00	\$0.00	22,742.86	48,223.63	
Massachusetts											
Assabet River	0.00	\$0.00	0.00	\$0.00	103.38	\$125,273.00	0.00	\$0.00	2,229.20	2,332.58	
Great Meadows	0.00	\$0.00	0.00	\$0.00	2,902.81	\$2,209,918.90	0.00	\$0.00	948.00	3,850.81	
Monomoy	0.00	\$0.00	0.00	\$0.00	7,435.46	\$18,339.00	0.00	\$0.00	168.54	7,604.00	
Nantucket	0.00	\$0.00	0.00	\$0.00	0.00	\$0.00	0.00	\$0.00	24.00	24.00	
Nomans Land Island	0.00	\$0.00	0.00	\$0.00	0.00	\$0.00	0.00	\$0.00	628.00	628.00	
Oxbow	0.00	\$0.00	0.00	\$0.00	0.00	\$0.00	0.00	\$0.00	1,677.02	1,677.02	
Parker River	0.00	\$0.00	0.00	\$0.00	4,617.79	\$107,740.84	0.00	\$0.00	109.42	4,727.21	
Silvio O. Conte (41)*	0.00	\$0.00	0.00	\$0.00	230.38	\$371,361.00	0.00	\$0.00	700.18	930.56	

Table 1. National Migratory Bird Refuges

State and Unit	FISCAL YEAR MBCF ACQUISITION				CUMULATIVE TOTALS AT END OF FISCAL YEAR					
	Purchased		Easement or Lease		MBCF				All Other Acres	Total Acres
	Acres	Cost	Acres	Cost	Acres	Cost	Easement or Lease	Cost		
Massachusetts (Continued)										
Thacher Island	0.00	\$0.00	0.00	\$0.00	0.00	\$0.00	0.00	\$0.00	22.00	22.00
State Total	8	\$0.00	\$0.00	\$0.00	15,289.82	\$2,832,632.74	0.00	\$0.00	6,506.36	21,796.18
Michigan										
Detroit River	-4.34	\$0.00	0.00	\$0.00	279.61	\$1,749,068.00	0.00	\$0.00	5,506.50	5,786.11
FSA Interest MI ***	0.00	\$0.00	0.00	\$0.00	0.00	\$0.00	0.00	\$0.00	5,220.70	5,220.70
Michigan Islands	0.00	\$0.00	0.00	\$0.00	0.00	\$0.00	0.00	\$0.00	744.39	744.39
Seney	0.00	\$0.00	0.00	\$0.00	44,201.80	\$127,726.66	0.00	\$0.00	51,062.86	95,264.66
Shiawassee	0.00	\$0.00	0.00	\$0.00	8,376.46	\$1,401,015.67	0.00	\$0.00	1,357.96	9,734.42
State Total	4	-\$4.34	\$0.00	\$0.00	52,857.87	\$3,277,810.33	0.00	\$0.00	63,892.41	116,750.28
Minnesota										
Agassiz	0.00	\$0.00	0.00	\$0.00	700.11	\$40,226.04	0.00	\$0.00	60,800.82	61,500.93
Big Stone	0.00	\$0.00	0.00	\$0.00	0.00	\$0.00	0.00	\$0.00	11,585.42	11,585.42
FSA Interest MN ***	0.00	\$0.00	0.00	\$0.00	0.00	\$0.00	0.00	\$0.00	8,906.20	8,906.20
Glacial Ridge	2,692.14	\$1,175,000.00	0.00	\$0.00	16,722.61	\$4,175,000.00	0.00	\$0.00	5,754.58	22,477.19
Hamden Slough	0.00	\$0.00	0.00	\$0.00	3,136.45	\$1,832,872.00	73.40	\$0.00	0.00	3,209.85
Rice Lake	0.00	\$0.00	0.00	\$0.00	6,435.60	\$197,329.77	0.00	\$0.00	7,991.32	14,426.92
Rydell	0.00	\$0.00	0.00	\$0.00	0.00	\$0.00	0.00	\$0.00	2,070.00	2,070.00
Sherburne	0.00	\$0.00	0.00	\$0.00	29,516.90	\$3,273,341.05	0.00	\$0.00	120.94	29,637.84
Tamarac	0.00	\$0.00	0.00	\$0.00	35,151.38	\$612,159.93	0.00	\$0.00	46.58	35,197.96
State Total	8	2,692.14	\$1,175,000.00	\$0.00	91,663.05	\$10,130,928.79	73.40	\$0.00	97,275.86	189,012.31
Mississippi										
Coldwater River	0.00	\$0.00	0.00	\$0.00	2,694.10	\$2,198,450.00	0.00	\$0.00	94.26	2,788.36
Dahomey	0.00	\$0.00	0.00	\$0.00	0.00	\$0.00	260.00	\$63,180.00	8,906.80	9,166.80
FSA Interest MS ***	0.00	\$0.00	0.00	\$0.00	0.00	\$0.00	0.00	\$0.00	17,388.64	17,388.64
Hillside	0.00	\$0.00	0.00	\$0.00	291.43	\$164,500.00	0.00	\$0.00	15,407.37	15,698.80
Mathews Brake	0.00	\$0.00	0.00	\$0.00	2,406.07	\$1,691,446.00	0.00	\$0.00	8.64	2,414.71
Morgan Brake	0.00	\$0.00	0.00	\$0.00	7,241.28	\$4,517,482.20	0.00	\$0.00	222.49	7,463.77
Panther Swamp	0.00	\$0.00	0.00	\$0.00	32,243.96	\$20,453,483.00	640.00	\$244,710.00	7,765.06	40,649.02
Sam D. Hamilton Noxubee	0.00	\$0.00	0.00	\$0.00	1,427.14	\$145,413.05	0.00	\$0.00	45,827.46	47,254.60
St. Catherine Creek	0.00	\$0.00	0.00	\$0.00	24,429.29	\$12,925,167.00	502.10	\$164,799.92	160.00	25,091.39
Tallahatchie	0.00	\$0.00	0.00	\$0.00	2,324.14	\$1,361,000.00	0.00	\$0.00	2,074.67	4,398.81
Yazoo	0.00	\$0.00	0.00	\$0.00	12,940.43	\$2,659,743.78	0.00	\$32,760.00	2.21	12,942.64
State Total	10	\$0.00	\$0.00	\$0.00	85,997.84	\$46,116,685.03	1,402.10	\$505,449.92	97,857.60	185,257.54
Missouri										
Clarence Cannon	0.00	\$0.00	0.00	\$0.00	3,736.04	\$1,163,649.25	0.00	\$0.00	14.44	3,750.48
FSA Interest MO ***	0.00	\$0.00	0.00	\$0.00	0.00	\$0.00	0.00	\$0.00	6,343.75	6,343.75
Great River (11)*	0.00	\$0.00	0.00	\$0.00	1,119.78	\$460,000.00	0.00	\$0.00	988.15	2,107.93
Middle Mississippi River (11)*	0.00	\$0.00	0.00	\$0.00	0.00	\$0.00	0.00	\$0.00	1,704.17	1,704.17
Mingo	0.00	\$0.00	0.00	\$0.00	21,535.95	\$298,615.82	11.86	\$27.00	113.24	21,661.05
Squaw Creek	0.00	\$0.00	0.00	\$0.00	801.32	\$38,275.46	1.00	\$0.00	6,612.57	7,414.89
Swan Lake	0.00	\$0.00	0.00	\$0.00	5,379.32	\$355,193.19	0.00	\$0.00	6,113.65	11,492.97
Two Rivers (11)*	0.00	\$0.00	0.00	\$0.00	0.00	\$0.00	0.00	\$0.00	232.00	232.00
State Total	4	\$0.00	\$0.00	\$0.00	32,572.41	\$2,315,733.72	12.86	\$27.00	22,121.97	54,707.24
Montana										
Benton Lake	0.00	\$0.00	0.00	\$0.00	147.64	\$5,315.00	60.94	\$8,763.00	12,250.86	12,459.44
Black Coulee	0.00	\$0.00	0.00	\$0.00	0.00	\$0.00	0.00	\$0.00	1,308.88	1,308.88
Bowdoin	0.00	\$0.00	0.00	\$0.00	0.00	\$0.00	0.00	\$0.00	15,551.97	15,551.97
Charles M. Russell	0.00	\$0.00	0.00	\$0.00	0.00	\$0.00	0.00	\$0.00	918,326.19	918,326.19
Creedman Coulee	0.00	\$0.00	0.00	\$0.00	0.00	\$0.00	0.00	\$0.00	2,728.00	2,728.00
FSA Interest MT ***	0.00	\$0.00	0.00	\$0.00	0.00	\$0.00	0.00	\$0.00	2,065.12	2,065.12
Hailstone	0.00	\$0.00	0.00	\$0.00	0.00	\$0.00	0.00	\$0.00	920.00	920.00
Halfbreed Lake	0.00	\$0.00	0.00	\$1,878.66	3,279.02	\$291,000.00	640.00	\$35,328.86	399.22	4,318.24
Hewitt Lake	0.00	\$0.00	0.00	\$0.00	0.00	\$0.00	0.00	\$0.00	1,360.92	1,360.92
Lake Mason	0.00	\$0.00	0.00	\$0.00	4,100.45	\$0.00	0.00	\$0.00	12,714.07	16,814.52
Lake Thibadeau	0.00	\$0.00	0.00	\$0.00	0.00	\$0.00	0.00	\$0.00	3,868.48	3,868.48
Lamesteer	0.00	\$0.00	0.00	\$0.00	0.00	\$0.00	0.00	\$0.00	800.00	800.00
Lee Metcalf	0.00	\$0.00	0.00	\$0.00	2,696.29	\$799,680.00	0.00	\$0.00	103.23	2,799.52
Lost Trail	0.00	\$0.00	-30.00	\$0.00	4,693.20	\$1,728,205.00	1,029.04	\$4,128.49	3,182.87	8,905.11
Medicine Lake	0.00	\$0.00	0.00	\$0.00	2,513.26	\$25,460.00	0.00	\$0.00	29,020.45	31,533.71
Red Rock Lakes	75.00	\$377,000.00	0.00	\$11,085.00	3,615.28	\$4,544,191.00	3,106.32	\$57,397.90	78,050.87	84,772.47
Swan River	0.00	\$0.00	0.00	\$0.00	1,568.81	\$901,645.00	0.00	\$0.00	0.00	1,568.81

Table 1. National Migratory Bird Refuges

State and Unit	FISCAL YEAR MBCF ACQUISITION				CUMULATIVE TOTALS AT END OF FISCAL YEAR						
	Purchased		Easement or Lease		MBCF				All Other Acres	Total Acres	
	Acres	Cost	Acres	Cost	Acres	Cost	Easement or Lease	Cost			
Montana (Continued)											
UL Bend	0.00	\$0.00	0.00	\$0.00	9,688.19	\$577,280.00	0.00	\$0.00	46,401.37	56,089.56	
War Horse	0.00	\$0.00	0.00	\$0.00	0.00	\$0.00	0.00	\$0.00	3,392.87	3,392.87	
State Total	18	75.00	\$377,000.00	-30.00	\$12,963.66	32,302.14	\$8,872,776.00	4,836.30	\$105,618.25	1,132,445.37	1,169,583.81
Nebraska											
Crescent Lake	0.00	\$0.00	0.00	\$0.00	3,710.00	\$31,048.00	31.49	\$3,189.00	42,253.86	45,995.35	
Desoto (19)*	0.00	\$0.00	0.00	\$0.00	3,660.32	\$591,507.20	0.00	\$0.00	663.88	4,324.20	
FSA Interest NE ***	0.00	\$0.00	0.00	\$0.00	0.00	\$0.00	0.00	\$0.00	3,070.18	3,070.18	
Valentine	0.00	\$0.00	0.00	\$0.00	6,158.34	\$62,747.00	0.00	\$0.00	66,939.75	73,098.09	
State Total	2	0.00	\$0.00	0.00	\$0.00	13,528.66	\$685,302.20	31.49	\$3,189.00	112,927.67	126,487.82
Nevada											
Anaho Island	0.00	\$0.00	0.00	\$0.00	0.00	\$0.00	0.00	\$0.00	247.73	247.73	
Desert	0.00	\$0.00	0.00	\$0.00	320.00	\$5,600.00	0.00	\$0.00	1,614,993.49	1,615,313.49	
Fallon	0.00	\$0.00	0.00	\$0.00	0.00	\$0.00	0.00	\$0.00	17,901.94	17,901.94	
Pahranagat	0.00	\$0.00	0.00	\$0.00	3,915.60	\$500,000.00	0.75	\$0.00	1,466.39	5,382.74	
Ruby Lake	0.00	\$0.00	0.00	\$0.00	29,945.73	\$208,437.25	0.00	\$0.00	9,980.37	39,926.10	
Sheldon (4)	0.00	\$0.00	0.00	\$0.00	23,143.67	\$2,002.00	0.00	\$0.00	549,752.48	572,896.15	
Stillwater	0.00	\$0.00	0.00	\$0.00	0.00	\$0.00	0.00	\$0.00	88,446.32	88,446.32	
State Total	7	0.00	\$0.00	0.00	\$0.00	57,325.00	\$716,039.25	0.75	\$0.00	2,282,788.72	2,340,114.47
New Hampshire											
Silvio O. Conte (42)*	0.00	\$0.00	0.00	\$0.00	2,690.09	\$2,733,645.50	3.40	\$2,054.50	4,910.07	7,603.56	
Umbagog (37)	0.00	\$0.00	0.00	\$0.00	10,656.39	\$6,135,246.58	0.00	\$1.00	13,918.12	24,574.51	
State Total	1	0.00	\$0.00	0.00	\$0.00	13,346.48	\$8,868,892.08	3.40	\$2,055.50	18,828.19	32,178.07
New Jersey											
Cape May	0.00	\$0.00	0.00	\$0.00	4,564.56	\$5,038,193.00	0.00	\$0.00	7,549.46	12,114.02	
Edwin B. Forsythe	0.00	\$0.00	0.00	\$0.00	40,002.73	\$17,903,592.97	0.00	\$1,300.00	7,380.10	47,382.83	
Great Swamp	0.00	\$0.00	0.00	\$0.00	2,808.67	\$3,577,691.05	0.00	\$0.00	4,964.45	7,773.12	
Supawna Meadows	0.00	\$0.00	0.00	\$0.00	2,526.83	\$968,744.00	0.00	\$0.00	746.52	3,273.35	
Wallkill River (39)*	0.00	\$0.00	0.00	\$0.00	1,382.51	\$3,001,912.50	2.08	\$1.00	4,062.65	5,447.24	
State Total	4	0.00	\$0.00	0.00	\$0.00	51,285.30	\$30,490,133.52	2.08	\$1,301.00	24,703.18	75,990.56
New Mexico											
Bitter Lake	0.00	\$0.00	0.00	\$0.00	10,753.66	\$52,304.00	0.00	\$0.00	13,854.98	24,608.64	
Bosque del Apache	0.00	\$0.00	0.00	\$0.00	56,850.31	\$125,311.00	0.00	\$0.00	480.87	57,331.18	
Las Vegas	0.00	\$0.00	0.00	\$0.00	8,672.08	\$2,121,150.00	0.00	\$0.00	0.00	8,672.08	
Maxwell	0.00	\$0.00	0.00	\$0.00	2,791.69	\$423,370.79	0.00	\$0.00	906.90	3,698.59	
State Total	4	0.00	\$0.00	0.00	\$0.00	79,067.74	\$2,722,135.79	0.00	\$0.00	15,242.75	94,310.49
New York											
Amagansett	0.00	\$0.00	0.00	\$0.00	0.00	\$0.00	0.00	\$0.00	35.84	35.84	
Conscience Point	0.00	\$0.00	0.00	\$0.00	0.00	\$0.00	0.00	\$0.00	60.40	60.40	
Elizabeth A. Morton	0.00	\$0.00	0.00	\$0.00	0.00	\$0.00	0.00	\$0.00	187.19	187.19	
FSA Interest NY ***	0.00	\$0.00	0.00	\$0.00	0.00	\$0.00	0.00	\$0.00	2,710.64	2,710.64	
Iroquois	0.00	\$0.00	0.00	\$0.00	10,757.81	\$1,279,615.46	0.00	\$0.00	70.25	10,828.06	
Montezuma	625.39	\$2,377,000.00	0.00	\$0.00	8,594.00	\$5,027,718.56	0.00	\$0.00	1,216.89	9,810.89	
Oyster Bay	0.00	\$0.00	0.00	\$0.00	0.00	\$0.00	0.00	\$0.00	3,204.08	3,204.08	
Seatuck	0.00	\$0.00	0.00	\$0.00	0.00	\$0.00	0.00	\$0.00	209.23	209.23	
Shawangunk Grasslands	0.00	\$0.00	0.00	\$0.00	0.00	\$0.00	0.00	\$0.00	566.53	566.53	
Target Rock	0.00	\$0.00	0.00	\$0.00	0.00	\$0.00	0.00	\$0.00	80.09	80.09	
Wallkill River (40)	0.00	\$0.00	0.00	\$0.00	0.00	\$0.00	0.00	\$0.00	307.69	307.69	
Wertheim	0.00	\$0.00	0.00	\$0.00	188.70	\$193,217.80	0.00	\$0.00	2,499.09	2,687.79	
State Total	11	625.39	\$2,377,000.00	0.00	\$0.00	19,540.51	\$6,500,551.82	0.00	\$0.00	11,147.92	30,688.43
North Carolina											
Cedar Island	0.00	\$0.00	0.00	\$0.00	12,498.77	\$389,171.21	0.00	\$0.00	1,997.55	14,496.32	
Currituck	0.00	\$0.00	0.00	\$0.00	3,762.61	\$8,689,434.00	225.76	\$120,000.00	4,335.52	8,323.89	
FSA Interest NC ***	0.00	\$0.00	0.00	\$0.00	0.00	\$0.00	0.00	\$0.00	7,336.58	7,336.58	
Great Dismal Swamp (16)	0.00	\$0.00	0.00	\$0.00	2,790.60	\$3,155,540.00	0.00	\$1.00	24,811.80	27,602.40	
Mackay Island (16)	0.00	\$0.00	0.00	\$0.00	6,370.24	\$1,172,606.95	0.00	\$0.00	1,015.56	7,385.80	
Mattamuskeet	0.00	\$0.00	0.00	\$0.00	252.04	\$1,285.35	0.00	\$0.00	49,921.89	50,173.93	
Pea Island	0.00	\$0.00	0.00	\$0.00	5,787.97	\$40,401.86	0.00	\$0.00	46.40	5,834.37	
Pee Dee	0.00	\$0.00	0.00	\$0.00	8,438.19	\$2,561,694.76	0.75	\$157.00	27.66	8,466.60	
Pocosin Lakes	0.00	\$0.00	0.00	\$0.00	12,350.35	\$1,682,157.99	0.00	\$0.00	97,756.29	110,106.64	
Roanoke River	0.00	\$0.00	0.00	\$0.00	15,692.43	\$8,338,258.00	0.00	\$0.00	4,870.00	20,562.43	

Table 1. National Migratory Bird Refuges

State and Unit	FISCAL YEAR MBCF ACQUISITION				CUMULATIVE TOTALS AT END OF FISCAL YEAR					
	Purchased		Easement or Lease		MBCF				All Other Acres	Total Acres
	Acres	Cost	Acres	Cost	Acres	Cost	Easement or Lease	Cost		
North Carolina (Continued)										
Swanquarter	0.00	\$0.00	0.00	\$0.00	15,492.76	\$60,920.93	0.00	\$0.00	918.33	16,411.09
State Total 10	0.00	\$0.00	0.00	\$0.00	83,435.96	\$26,091,471.05	226.51	\$120,158.00	193,037.58	276,700.05
North Dakota										
Appert Lake	0.00	\$0.00	0.00	\$0.00	0.00	\$0.00	0.00	\$0.00	907.75	907.75
Ardoch	0.00	\$0.00	0.00	\$0.00	288.13	\$2,739.00	0.00	\$0.00	2,408.00	2,696.13
Arrowwood	0.00	\$0.00	0.00	\$0.00	2,097.51	\$46,906.58	0.00	\$0.00	13,845.35	15,942.86
Audubon	0.00	\$0.00	0.00	\$0.00	0.00	\$0.00	0.00	\$0.00	14,739.19	14,739.19
Bone Hill	0.00	\$0.00	0.00	\$0.00	0.00	\$0.00	0.00	\$0.00	640.00	640.00
Brumba	0.00	\$0.00	0.00	\$0.00	0.00	\$0.00	0.00	\$0.00	1,977.48	1,977.48
Buffalo Lake	0.00	\$0.00	0.00	\$0.00	0.00	\$0.00	0.00	\$0.00	1,563.72	1,563.72
Camp Lake	0.00	\$0.00	0.00	\$0.00	0.00	\$0.00	0.00	\$0.00	584.70	584.70
Canfield Lake	0.00	\$0.00	0.00	\$0.00	3.10	\$100.00	0.00	\$0.00	310.13	313.23
Chase Lake	0.00	\$0.00	0.00	\$0.00	4,449.47	\$25,611.00	0.00	\$0.00	0.00	4,449.47
Cottonwood Lake	0.00	\$0.00	0.00	\$0.00	0.00	\$0.00	0.00	\$0.00	1,013.47	1,013.47
Dakota Grassland	0.00	\$0.00	0.00	\$0.00	0.00	\$0.00	0.00	\$0.00	10,906.25	10,906.25
Dakota Lake	0.00	\$0.00	0.00	\$0.00	0.00	\$0.00	0.00	\$0.00	2,799.78	2,799.78
Des Lacs	0.00	\$0.00	0.00	\$0.00	631.63	\$6,893.60	2.70	\$0.00	18,912.81	19,547.14
Florence Lake	0.00	\$0.00	0.00	\$0.00	1,468.40	\$31,485.00	0.00	\$0.00	419.80	1,888.20
FSA Interest ND ***	0.00	\$0.00	0.00	\$0.00	0.00	\$0.00	0.00	\$0.00	4,770.20	4,770.20
Half-Way Lake	0.00	\$0.00	0.00	\$0.00	0.00	\$0.00	160.00	\$0.00	0.00	160.00
Hiddenwood	0.00	\$0.00	0.00	\$0.00	0.00	\$0.00	568.35	\$0.00	0.00	568.35
Hobart Lake	0.00	\$0.00	0.00	\$0.00	236.49	\$5,165.00	0.00	\$0.00	1,840.61	2,077.10
Hutchinson Lake	0.00	\$0.00	0.00	\$0.00	0.00	\$0.00	0.00	\$0.00	478.90	478.90
J. Clark Salyer	0.00	\$0.00	0.00	\$0.00	21,649.95	\$306,352.60	50.52	\$0.00	37,675.93	59,376.40
Johnson Lake	0.00	\$0.00	0.00	\$0.00	0.00	\$0.00	0.00	\$0.00	2,007.91	2,007.91
Kellys Slough	0.00	\$0.00	0.00	\$0.00	0.00	\$0.00	0.00	\$0.00	1,269.50	1,269.50
Lake Alice	0.00	\$0.00	0.00	\$0.00	8,027.86	\$2,067,184.00	8.00	\$0.00	4,059.68	12,095.54
Lake George	0.00	\$0.00	0.00	\$0.00	0.00	\$0.00	0.00	\$0.00	3,118.81	3,118.81
Lake Ilo	0.00	\$0.00	0.00	\$0.00	3,178.30	\$78,582.98	0.00	\$0.00	854.82	4,033.12
Lake Nettie	0.00	\$0.00	0.00	\$0.00	2,420.60	\$148,245.00	0.00	\$0.00	634.30	3,054.90
Lake Otis	0.00	\$0.00	0.00	\$0.00	0.00	\$0.00	0.00	\$0.00	320.00	320.00
Lake Patricia	0.00	\$0.00	0.00	\$0.00	0.00	\$0.00	0.00	\$0.00	800.23	800.23
Lake Zahl	0.00	\$0.00	0.00	\$0.00	3,178.98	\$53,275.00	0.00	\$0.00	644.21	3,823.19
Lambs Lake	0.00	\$0.00	0.00	\$0.00	0.00	\$0.00	0.00	\$0.00	1,206.67	1,206.67
Little Goose	0.00	\$0.00	0.00	\$0.00	0.00	\$0.00	0.00	\$0.00	288.41	288.41
Long Lake	0.00	\$0.00	0.00	\$0.00	12,578.82	\$77,180.00	217.35	\$10.00	9,702.33	22,498.50
Lords Lake	0.00	\$0.00	0.00	\$0.00	0.00	\$0.00	0.00	\$0.00	1,915.29	1,915.29
Lost Lake	0.00	\$0.00	0.00	\$0.00	0.00	\$0.00	0.00	\$0.00	960.21	960.21
Lostwood	0.00	\$0.00	0.00	\$0.00	3,148.01	\$24,553.00	0.00	\$0.00	24,440.57	27,588.58
Maple River	0.00	\$0.00	0.00	\$0.00	0.00	\$0.00	0.00	\$0.00	712.00	712.00
McLean	0.00	\$0.00	0.00	\$0.00	344.00	\$12,516.00	0.00	\$0.00	416.00	760.00
Pleasant Lake	0.00	\$0.00	0.00	\$0.00	0.00	\$0.00	0.00	\$0.00	897.80	897.80
Pretty Rock	0.00	\$0.00	0.00	\$0.00	0.00	\$0.00	0.00	\$0.00	800.00	800.00
Rabb Lake	0.00	\$0.00	0.00	\$0.00	0.00	\$0.00	0.00	\$0.00	260.80	260.80
Rock Lake	0.00	\$0.00	0.00	\$0.00	0.00	\$0.00	0.00	\$0.00	5,665.96	5,665.96
Rose Lake	0.00	\$0.00	0.00	\$0.00	0.00	\$0.00	0.00	\$0.00	836.30	836.30
School Section Lake	0.00	\$0.00	0.00	\$0.00	0.00	\$0.00	0.00	\$0.00	297.30	297.30
Shell Lake	0.00	\$0.00	0.00	\$0.00	710.20	\$17,902.00	0.00	\$0.00	1,124.90	1,835.10
Sheyenne Lake	0.00	\$0.00	0.00	\$0.00	0.00	\$0.00	0.00	\$0.00	797.30	797.30
Sibley Lake	0.00	\$0.00	0.00	\$0.00	0.00	\$0.00	0.00	\$0.00	1,077.40	1,077.40
Silver Lake	0.00	\$0.00	0.00	\$0.00	0.00	\$0.00	0.00	\$0.00	3,347.64	3,347.64
Slade	0.00	\$0.00	0.00	\$0.00	0.00	\$0.00	0.00	\$0.00	3,000.20	3,000.20
Snyder Lake	0.00	\$0.00	0.00	\$0.00	0.00	\$0.00	0.00	\$0.00	1,550.18	1,550.18
Springwater	0.00	\$0.00	0.00	\$0.00	0.00	\$0.00	0.00	\$0.00	640.00	640.00
Stewart Lake	0.00	\$0.00	0.00	\$0.00	0.00	\$0.00	0.00	\$0.00	2,230.40	2,230.40
Stoney Slough	0.00	\$0.00	0.00	\$0.00	0.00	\$0.00	0.00	\$0.00	880.00	880.00
Storm Lake	0.00	\$0.00	0.00	\$0.00	0.00	\$0.00	0.00	\$0.00	685.90	685.90
Stump Lake	0.00	\$0.00	0.00	\$0.00	0.00	\$0.00	0.00	\$0.00	27.39	27.39
Sunburst Lake	0.00	\$0.00	0.00	\$0.00	0.00	\$0.00	0.00	\$0.00	327.51	327.51
Tewaukon	0.00	\$0.00	0.00	\$0.00	6,790.23	\$460,122.00	0.00	\$0.00	1,573.39	8,363.62
Tomahawk	0.00	\$0.00	0.00	\$0.00	0.00	\$0.00	0.00	\$0.00	440.00	440.00

Table 1. National Migratory Bird Refuges

State and Unit	FISCAL YEAR MBCF ACQUISITION				CUMULATIVE TOTALS AT END OF FISCAL YEAR					
	Purchased		Easement or Lease		MBCF				All Other Acres	Total Acres
	Acres	Cost	Acres	Cost	Acres	Cost	Easement or Lease	Cost		
North Dakota (Continued)										
Upper Souris	0.00	\$0.00	0.00	\$0.00	2,939.17	\$41,220.00	3.76	\$0.00	29,359.32	32,302.25
White Lake	0.00	\$0.00	0.00	\$0.00	1,040.00	\$28,800.00	0.00	\$0.00	0.00	1,040.00
Wild Rice Lake	0.00	\$0.00	0.00	\$0.00	0.00	\$0.00	0.00	\$0.00	778.80	778.80
Willow Lake	0.00	\$0.00	0.00	\$0.00	0.00	\$0.00	0.00	\$0.00	2,620.38	2,620.38
Wintering River	0.00	\$0.00	0.00	\$0.00	0.00	\$0.00	0.00	\$0.00	239.26	239.26
Wood Lake	0.00	\$0.00	0.00	\$0.00	0.00	\$0.00	0.00	\$0.00	280.00	280.00
State Total	63	0.00	0.00	0.00	75,180.85	\$3,434,832.76	1,010.68	\$10.00	228,883.14	305,074.67
Ohio										
Cedar Point	0.00	\$0.00	0.00	\$0.00	0.00	\$0.00	0.00	\$0.00	2,449.77	2,449.77
FSA Interest OH	***	0.00	\$0.00	0.00	\$0.00	0.00	\$0.00	0.00	5.00	5.00
Ottawa	0.00	\$0.00	0.00	\$0.00	5,172.11	\$2,572,893.55	590.80	\$2.00	1,013.22	6,776.13
West Sister Island	0.00	\$0.00	0.00	\$0.00	0.00	\$0.00	0.00	\$0.00	80.13	80.13
State Total	3	0.00	0.00	0.00	5,172.11	\$2,572,893.55	590.80	\$2.00	3,548.12	9,311.03
Oklahoma										
Deep Fork	0.00	\$0.00	0.00	\$0.00	1,571.50	\$421,000.00	0.00	\$0.00	8,176.78	9,748.28
Little River	0.00	\$0.00	0.00	\$0.00	12,262.16	\$9,881,540.94	0.00	\$0.00	1,397.88	13,660.04
Optima	0.00	\$0.00	0.00	\$0.00	0.00	\$0.00	0.00	\$0.00	4,332.81	4,332.81
Salt Plains	0.00	\$0.00	0.00	\$0.00	1,117.39	\$50,837.00	0.00	\$0.00	31,079.92	32,197.31
Sequoyah	0.00	\$0.00	0.00	\$0.00	0.00	\$0.00	0.00	\$0.00	20,800.00	20,800.00
Tishomingo	0.00	\$0.00	0.00	\$0.00	0.00	\$0.00	0.00	\$0.00	16,464.18	16,464.18
Washita	0.00	\$0.00	0.00	\$0.00	0.00	\$0.00	0.00	\$1.00	8,075.37	8,075.37
State Total	7	0.00	0.00	0.00	14,951.05	\$10,353,377.94	0.00	\$1.00	90,326.94	105,277.99
Oregon										
Ankeny	0.00	\$0.00	0.00	\$0.00	2,796.33	\$893,600.00	0.00	\$0.00	0.00	2,796.33
Baskett Slough	0.00	\$0.00	0.00	\$0.00	2,492.33	\$941,985.00	0.00	\$0.00	0.00	2,492.33
Cape Meares	0.00	\$0.00	0.00	\$0.00	0.00	\$0.00	0.00	\$0.00	138.51	138.51
Cold Springs	0.00	\$0.00	0.00	\$0.00	386.88	\$2,760.00	0.00	\$0.00	2,729.95	3,116.83
Deer Flat	(21)*	0.00	\$0.00	0.00	0.00	\$0.00	0.00	\$0.00	220.57	220.57
FSA Interest OR	***	0.00	\$0.00	0.00	0.00	\$0.00	0.00	\$0.00	1,562.56	1,562.56
Hart Mountain	0.00	\$0.00	0.00	\$0.00	54,837.26	\$216,114.58	0.00	\$0.00	216,129.67	270,966.93
Klamath Marsh	0.00	\$0.00	0.00	\$0.00	18,288.86	\$2,070,694.00	0.00	\$0.00	22,756.32	41,045.18
Lewis And Clark	0.00	\$0.00	0.00	\$0.00	2,850.63	\$469,250.00	0.00	\$0.00	9,316.22	12,166.85
Lower Klamath	(2)*	0.00	\$0.00	0.00	0.00	\$0.00	0.00	\$0.00	6,618.13	6,618.13
Malheur	0.00	\$0.00	0.00	\$0.00	47,953.58	\$2,461,939.35	0.00	\$0.00	139,173.36	187,126.94
McNary	*	0.00	\$0.00	0.00	0.00	\$0.00	0.00	\$0.00	1,185.10	1,185.10
Nestucca Bay	0.00	\$0.00	0.00	\$0.00	20.81	\$105,000.00	0.00	\$0.00	1,171.69	1,192.50
Oregon Islands	0.00	\$0.00	0.00	\$0.00	0.00	\$0.00	0.00	\$0.00	748.55	748.55
Sheldon	(15)*	0.00	\$0.00	0.00	627.48	\$4,079.00	0.00	\$0.00	0.00	627.48
Tualatin River	23.59	\$82,500.00	0.00	\$0.00	504.40	\$2,754,296.00	0.80	\$4,375.00	1,822.78	2,327.98
Umatilla	(26)	0.00	\$0.00	0.00	0.00	\$0.00	0.00	\$0.00	8,907.37	8,907.37
Upper Klamath	0.00	\$0.00	0.00	\$0.00	4,146.10	\$123,476.00	0.00	\$0.00	18,951.58	23,097.68
William L. Finley	0.00	\$0.00	0.00	\$0.00	5,697.06	\$2,600,006.00	8.94	\$6,797.00	0.00	5,706.00
State Total	14	23.59	\$82,500.00	0.00	140,601.72	\$12,643,199.93	9.74	\$11,172.00	431,432.36	572,043.82
Pennsylvania										
Erie	0.00	\$0.00	0.00	\$0.00	7,962.81	\$911,480.12	0.00	\$0.00	837.42	8,800.23
John Heinz	0.00	\$0.00	0.00	\$0.00	80.33	\$20,966.00	0.00	\$0.00	912.84	993.17
State Total	2	0.00	0.00	0.00	8,043.14	\$932,446.12	0.00	\$0.00	1,750.26	9,793.40
Rhode Island										
Block Island	0.00	\$0.00	0.00	\$0.00	0.00	\$0.00	0.00	\$0.00	132.72	132.72
John H. Chafee	0.00	\$0.00	0.00	\$0.00	0.00	\$0.00	0.00	\$0.00	550.42	550.42
Ninigret	0.00	\$0.00	0.00	\$0.00	0.00	\$0.00	0.00	\$0.00	868.40	868.40
Sachuest Point	0.00	\$0.00	0.00	\$0.00	0.00	\$0.00	0.00	\$0.00	241.90	241.90
Trustom Pond	0.00	\$0.00	0.00	\$0.00	0.00	\$0.00	0.00	\$0.00	777.30	777.30
State Total	5	0.00	0.00	0.00	0.00	\$0.00	0.00	\$0.00	2,570.74	2,570.74
South Carolina										
Cape Romain	0.00	\$0.00	0.00	\$0.00	22,204.29	\$17,218.18	0.00	\$0.00	44,039.17	66,243.46
Carolina Sandhills	0.00	\$0.00	0.00	\$0.00	580.20	\$38,352.75	0.00	\$0.00	45,346.09	45,926.29
FSA Interest SC	***	0.00	\$0.00	0.00	0.00	\$0.00	0.00	\$0.00	1,783.13	1,783.13
Pinckney Island	0.00	\$0.00	0.00	\$0.00	0.00	\$0.00	0.00	\$0.00	4,052.70	4,052.70
Santee	0.00	\$0.00	0.00	\$0.00	4,322.43	\$549,953.57	0.00	\$0.00	8,193.98	12,516.41
Savannah	(1)*	0.00	\$0.00	0.00	7,991.40	\$1,554,443.30	0.00	\$0.00	7,026.32	15,017.72

Table 1. National Migratory Bird Refuges

State and Unit	FISCAL YEAR MBCF ACQUISITION				CUMULATIVE TOTALS AT END OF FISCAL YEAR					
	Purchased		Easement or Lease		MBCF				All Other Acres	Total Acres
	Acres	Cost	Acres	Cost	Acres	Cost	Easement or Lease	Cost		
South Carolina (Continued)										
Tybee	0.00	\$0.00	0.00	\$0.00	0.00	\$0.00	0.00	\$0.00	100.00	100.00
Waccamaw	0.00	\$0.00	0.00	\$0.00	1,292.41	\$1,400,000.00	0.00	\$0.00	25,795.96	27,088.37
State Total	6	\$0.00	\$0.00	\$0.00	36,390.73	\$3,559,967.80	0.00	\$0.00	136,337.35	172,728.08
South Dakota										
Bear Butte	0.00	\$0.00	0.00	\$0.00	0.00	\$0.00	0.00	\$0.00	374.20	374.20
FSA Interest SD ***	0.00	\$0.00	0.00	\$0.00	0.00	\$0.00	0.00	\$0.00	151.00	151.00
Lacreek	0.00	\$0.00	0.00	\$0.00	9,379.75	\$768,491.00	80.00	\$35,933.00	7,395.58	16,855.33
Lake Andes	0.00	\$0.00	0.00	\$0.00	617.64	\$92,322.00	0.00	\$0.00	5,021.79	5,639.43
Sand Lake	0.00	\$0.00	0.00	\$0.00	3,917.39	\$90,622.00	0.00	\$0.00	17,902.80	21,820.19
Waubay	0.00	\$0.00	0.00	\$0.00	683.77	\$23,838.00	90.53	\$0.00	3,965.92	4,740.22
State Total	5	\$0.00	\$0.00	\$0.00	14,598.55	\$975,273.00	170.53	\$35,933.00	34,811.29	49,580.37
Tennessee										
Chickasaw	2.98	\$55,000.00	0.00	\$0.00	15,637.96	\$18,331,568.72	0.00	\$0.00	10,880.95	26,518.91
Cross Creeks	0.00	\$0.00	0.00	\$0.00	87.64	\$26,200.00	0.00	\$0.00	8,773.85	8,861.49
FSA Interest TN ***	0.00	\$0.00	0.00	\$0.00	0.00	\$0.00	0.00	\$0.00	685.40	685.40
Hatchie	0.00	\$0.00	0.00	\$0.00	11,220.73	\$1,862,329.25	0.00	\$0.00	335.37	11,556.10
Lake Isom	0.00	\$0.00	0.00	\$0.00	344.65	\$27,290.72	0.00	\$0.00	1,513.73	1,858.38
Lower Hatchie	0.00	\$0.00	0.00	\$0.00	8,889.46	\$12,854,392.00	0.00	\$0.00	4,875.44	13,764.90
Reelfoot (22)*	0.00	\$0.00	0.00	\$0.00	496.53	\$109,531.78	0.00	\$0.00	7,914.17	8,410.70
Tennessee	0.00	\$0.00	0.00	\$0.00	430.45	\$72,151.10	0.00	\$0.00	50,929.01	51,359.46
State Total	6	\$55,000.00	\$0.00	\$0.00	37,107.42	\$33,283,463.57	0.00	\$0.00	85,907.92	123,015.34
Texas										
Anahuac	0.00	\$0.00	0.00	\$0.00	29,967.70	\$12,452,064.20	63.09	\$0.00	4,369.18	34,399.97
Aransas	0.00	\$0.00	0.00	\$0.00	49,235.68	\$1,833,531.80	0.00	\$0.00	65,421.37	114,657.05
Big Boggy	0.00	\$0.00	0.00	\$0.00	4,113.41	\$2,374,594.19	258.23	\$58,112.00	154.53	4,526.17
Brazoria	0.00	\$0.00	0.00	\$0.00	42,641.23	\$13,822,482.26	0.00	\$0.00	1,772.65	44,413.88
Buffalo Lake	0.00	\$0.00	0.00	\$0.00	0.00	\$0.00	0.00	\$0.00	7,664.16	7,664.16
FSA Interest TX ***	0.00	\$0.00	0.00	\$0.00	0.00	\$0.00	0.00	\$0.00	2,776.21	2,776.21
Hagerman	0.00	\$0.00	0.00	\$0.00	0.00	\$0.00	0.00	\$0.00	11,319.84	11,319.84
Laguna Atascosa	0.00	\$0.00	0.00	\$0.00	77,309.93	\$12,475,079.19	0.00	\$0.00	12,477.49	89,787.42
Little Sandy	0.00	\$0.00	0.00	\$0.00	0.00	\$0.00	3,802.00	\$0.00	0.00	3,802.00
Lower Rio Grande Valley	0.00	\$0.00	0.00	\$0.00	0.00	\$0.00	0.00	\$0.00	92,062.81	92,062.81
McFaddin	0.00	\$0.00	0.00	\$0.00	51,112.55	\$10,956,489.20	7,748.88	\$1,394,170.00	0.00	58,861.43
Moody	0.00	\$0.00	0.00	\$0.00	0.00	\$0.00	3,516.87	\$0.00	0.00	3,516.87
Muleshoe	0.00	\$0.00	0.00	\$0.00	2,154.80	\$25,740.00	0.00	\$0.00	4,294.30	6,449.10
San Bernard	1,653.42	\$2,961,700.00	0.00	\$0.00	44,383.53	\$31,579,215.07	2.32	\$1.00	15,028.00	59,413.85
Santa Ana	0.00	\$0.00	0.00	\$0.00	1,980.50	\$23,766.00	0.00	\$0.00	107.00	2,087.50
Texas Point	0.00	\$0.00	0.00	\$0.00	8,952.02	\$1,719,000.00	0.00	\$0.00	0.00	8,952.02
Trinity River	226.65	\$195,854.00	2.58	\$2,246.00	15,349.58	\$12,523,256.99	2.58	\$2,246.00	9,868.10	25,220.26
State Total	16	1,880.07	\$3,157,554.00	\$2,246.00	327,200.93	\$99,785,218.90	15,393.97	\$1,454,529.00	227,315.64	569,910.54
Utah										
Bear River	0.00	\$0.00	0.00	\$0.00	27,676.83	\$8,095,049.47	45.76	\$740.00	48,617.12	76,339.71
Fish Springs	0.00	\$0.00	0.00	\$0.00	3,774.82	\$93,325.00	0.00	\$73.00	14,217.42	17,992.24
FSA Interest UT ***	0.00	\$0.00	0.00	\$0.00	0.00	\$0.00	0.00	\$0.00	442.52	442.52
Ouray	0.00	\$0.00	0.00	\$8,870.00	5,014.98	\$461,084.25	1,484.46	\$492,923.15	3,116.90	9,616.34
State Total	3	\$0.00	\$0.00	\$8,870.00	36,466.63	\$8,649,458.72	1,530.22	\$493,736.15	66,393.96	104,390.81
Vermont										
FSA Interest VT ***	0.00	\$0.00	0.00	\$0.00	0.00	\$0.00	0.00	\$0.00	71.00	71.00
Missisquoi	0.00	\$0.00	0.00	\$0.00	6,324.65	\$582,134.27	0.00	\$0.00	905.04	7,229.69
Silvio O. Conte (43)	0.00	\$0.00	0.00	\$0.00	17,189.21	\$4,337,574.00	0.00	\$0.00	9,618.25	26,807.46
State Total	2	\$0.00	\$0.00	\$0.00	23,513.86	\$4,919,708.27	0.00	\$0.00	10,594.29	34,108.15
Virginia										
Back Bay	0.00	\$0.00	0.00	\$0.00	7,482.09	\$5,160,662.00	0.00	\$0.00	1,693.62	9,175.71
Chincoteague (23)	0.00	\$0.00	0.00	\$0.00	9,513.02	\$635,403.91	0.00	\$0.00	4,101.66	13,614.68
Eastern Shore Of Virginia	0.00	\$0.00	0.00	\$0.00	522.50	\$1,844,370.00	0.00	\$0.00	920.03	1,442.53
Fisherman Island	0.00	\$0.00	0.00	\$0.00	825.00	\$1,600,000.00	0.00	\$0.00	1,071.30	1,896.30
FSA Interest VA ***	0.00	\$0.00	0.00	\$0.00	0.00	\$0.00	0.00	\$0.00	133.70	133.70
Great Dismal Swamp (24)*	0.00	\$0.00	0.00	\$0.00	3,128.95	\$4,233,762.98	0.00	\$0.00	82,196.69	85,325.64
Mackay Island (24)*	0.00	\$0.00	0.00	\$0.00	874.40	\$26,855.75	0.00	\$0.00	3.60	878.00
Martin (23)*	0.00	\$0.00	0.00	\$0.00	0.00	\$0.00	0.00	\$0.00	145.62	145.62
Nansemond	0.00	\$0.00	0.00	\$0.00	0.00	\$0.00	0.00	\$0.00	422.99	422.99

Table 1. National Migratory Bird Refuges

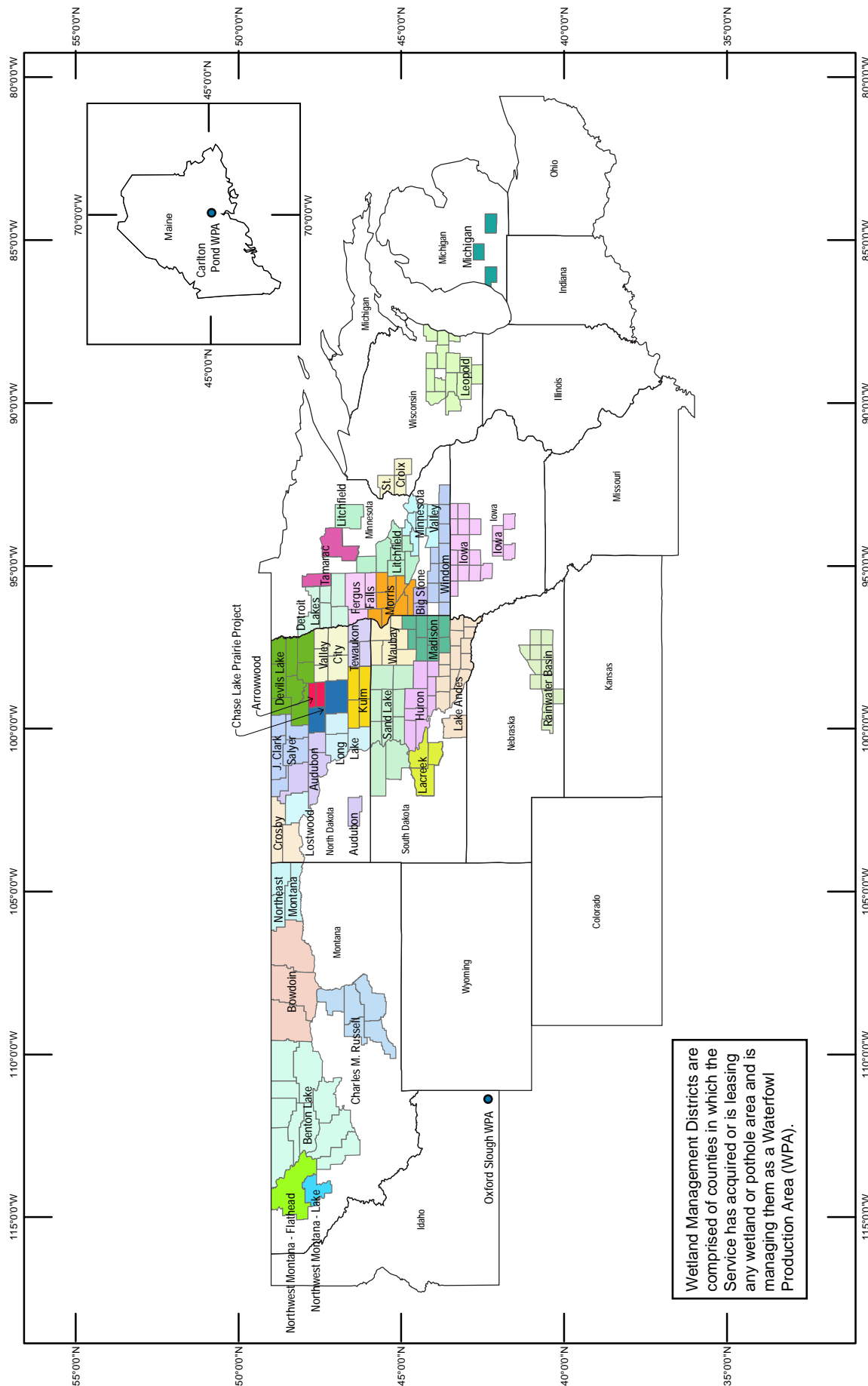
State and Unit	FISCAL YEAR MBCF ACQUISITION				CUMULATIVE TOTALS AT END OF FISCAL YEAR						
	Purchased		Easement or Lease		MBCF				All Other Acres	Total Acres	
	Acres	Cost	Acres	Cost	Acres	Cost	Easement or Lease	Cost			
Virginia (Continued)											
Occoquan Bay	0.00	\$0.00	0.00	\$0.00	0.00	\$0.00	0.00	\$0.00	642.07	642.07	
Plum Tree Island	0.00	\$0.00	0.00	\$0.00	0.00	\$0.00	0.00	\$0.00	3,501.68	3,501.68	
Presquile	0.00	\$0.00	0.00	\$0.00	0.00	\$0.00	0.00	\$0.00	1,328.92	1,328.92	
Rappahannock River Valley	0.00	\$0.00	0.00	\$0.00	1,287.30	\$2,270,200.00	123.40	\$585,001.00	7,307.72	8,718.42	
Wallops Island	0.00	\$0.00	0.00	\$0.00	0.00	\$0.00	0.00	\$0.00	373.00	373.00	
State Total	10	\$0.00	\$0.00	\$0.00	23,633.26	\$15,771,254.64	123.40	\$585,001.00	103,842.60	127,599.26	
Washington											
Columbia	0.00	\$0.00	0.00	\$0.00	11,361.77	\$426,346.04	0.00	\$0.00	16,933.76	28,295.53	
Conboy Lake	0.00	\$0.00	0.00	\$0.00	5,964.96	\$2,289,100.00	718.29	\$400,000.00	388.45	7,071.70	
FSA Interest WA ***	0.00	\$0.00	0.00	\$0.00	0.00	\$0.00	0.00	\$0.00	1,471.75	1,471.75	
Little Pend Oreille	0.00	\$0.00	0.00	\$0.00	4,216.65	\$27,414.00	0.00	\$0.00	38,376.92	42,593.57	
McNary	0.00	\$0.00	0.00	\$0.00	185.16	\$865.00	0.00	\$0.00	14,479.38	14,664.54	
Nisqually	0.00	\$0.00	0.00	\$0.00	2,494.24	\$3,861,990.17	0.55	\$3,000.00	2,034.42	4,529.21	
Pierce	0.00	\$0.00	0.00	\$0.00	0.00	\$0.00	0.00	\$0.00	329.38	329.38	
Ridgefield	0.00	\$0.00	0.00	\$0.00	4,670.16	\$4,033,600.00	1.74	\$21.00	556.20	5,228.10	
Saddle Mountain	0.00	\$0.00	0.00	\$0.00	0.00	\$0.00	0.00	\$0.00	161,485.93	161,485.93	
San Juan Islands	0.00	\$0.00	0.00	\$0.00	0.00	\$0.00	0.00	\$0.00	448.50	448.50	
Steigerwald Lake	0.00	\$0.00	0.00	\$0.00	50.00	\$500,000.00	0.00	\$0.00	996.02	1,046.02	
Toppenish	0.00	\$0.00	0.00	\$0.00	1,762.80	\$599,137.00	1.29	\$0.00	214.75	1,978.84	
Turnbull	0.00	\$0.00	0.00	\$0.00	13,909.32	\$507,411.38	0.00	\$0.00	4,775.66	18,684.98	
Umatilla (4)*	0.00	\$0.00	0.00	\$0.00	0.00	\$0.00	0.00	\$0.00	14,875.83	14,875.83	
Willapa	0.00	\$0.00	0.00	\$0.00	8,616.42	\$5,122,010.74	0.12	\$0.00	7,819.09	16,435.63	
State Total	13	\$0.00	\$0.00	\$0.00	53,231.48	\$17,367,874.33	721.99	\$403,021.00	265,186.04	319,139.51	
West Virginia											
Canaan Valley	0.00	\$0.00	0.00	\$0.00	683.79	\$2,296,884.98	0.00	\$0.00	15,876.16	16,559.95	
FSA Interest WV ***	0.00	\$0.00	0.00	\$0.00	0.00	\$0.00	0.00	\$0.00	8.37	8.37	
State Total	1	\$0.00	\$0.00	\$0.00	683.79	\$2,296,884.98	0.00	\$0.00	15,884.53	16,568.32	
Wisconsin											
FSA Interest WI ***	0.00	\$0.00	0.00	\$0.00	0.00	\$0.00	0.00	\$0.00	6,126.70	6,126.70	
Horicon	0.00	\$0.00	0.00	\$0.00	21,098.37	\$555,238.34	29.00	\$356.00	286.59	21,413.96	
Necedah	0.00	\$0.00	0.00	\$0.00	244.92	\$3,194.26	0.00	\$0.00	43,470.94	43,715.86	
Trempealeau	0.00	\$0.00	0.00	\$0.00	593.89	\$0.00	0.00	\$0.00	5,606.34	6,200.23	
State Total	3	\$0.00	\$0.00	\$0.00	21,937.18	\$558,432.60	29.00	\$356.00	55,490.57	77,456.75	
Wyoming											
Bamforth	0.00	\$0.00	0.00	\$0.00	964.80	\$6,368.00	0.00	\$0.00	201.23	1,166.03	
Cokeville Meadows	0.00	\$0.00	0.00	\$0.00	4,738.89	\$2,101,412.61	320.00	\$36,037.42	4,200.43	9,259.32	
FSA Interest WY ***	0.00	\$0.00	0.00	\$0.00	0.00	\$0.00	0.00	\$0.00	3,287.75	3,287.75	
Hutton Lake	0.00	\$0.00	0.00	\$0.00	1,815.49	\$7,944.00	0.00	\$0.00	152.85	1,968.34	
Pathfinder	0.00	\$0.00	0.00	\$0.00	0.00	\$0.00	0.00	\$0.00	16,806.90	16,806.90	
Seedskaadee	0.00	\$0.00	0.00	\$0.00	0.00	\$0.00	0.00	\$0.00	27,232.72	27,232.72	
State Total	5	\$0.00	\$0.00	\$0.00	7,519.18	\$2,115,724.61	320.00	\$36,037.42	51,881.88	59,721.06	
Grand Total	372	\$6,870.48	\$9,306,766.00	\$539.04	\$2,359,081.66	\$2,382,405.70	\$593,415,352.22	\$131,739.60	\$93,155,227.33	7,734,645.42	10,248,790.72

- (1) Also in Georgia
- (2) " " California
- (3) " " Arizona
- (4) " " Oregon
- (5) " " Alabama
- (6) " " Florida
- (7) " " South Carolina
- (8) " " Missouri
- (9) " " Iowa, Minnesota and Wisconsin
- (10) " " Nebraska
- (11) " " Illinois
- (12) " " Texas
- (13) " " Illinois, Minnesota and Wisconsin
- (14) " " Tennessee
- (15) " " Nevada

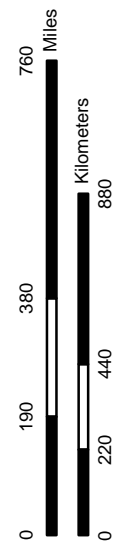
- (16) Also in Virginia
- (17) " " New Mexico
- (18) " " Illinois, Iowa and Wisconsin
- (19) " " Iowa
- (20) " " South Dakota
- (21) " " Idaho
- (22) " " Kentucky
- (23) " " Maryland
- (24) " " North Carolina
- (25) " " Illinois, Iowa and Minnesota
- (26) " " Washington
- (27) " " Mississippi
- (28) " " Louisiana
- (34) " " West Virginia and Kentucky
- (35) " " Pennsylvania and Kentucky

- (36) Also in New Hampshire
- (37) " " Maine
- (38) " " West Virginia and Pennsylvania
- (39) " " New York
- (40) " " New Jersey
- (41) " " New Hampshire and Vermont
- (42) " " Massachusetts and Vermont
- (43) " " Massachusetts and New Hampshire
- * - Counted in another state
- ** - Denotes interests transferred by the FSA Farm Service Agency (Formerly Farmers Home Administration, Department of Agriculture)*

Wetland Management Districts Map



Wetland Management Districts are comprised of counties in which the Service has acquired or is leasing any wetland or pothole area and is managing them as a Waterfowl Production Area (WPA).



PRODUCED IN THE DIVISION OF REALTY
 WASHINGTON, D.C.
 LAND STATUS CURRENT TO: 9/30/2009
 BASEMAP: ESRI
 DATUM: WGS 1984
 MAP NAME: WMDs2009

Table 2. Waterfowl Production Areas

State and Unit	FISCAL YEAR MBCF ACQUISITION				CUMULATIVE TOTALS AT END OF FISCAL YEAR						
	Purchased		Easement or Lease		MBCF				All Other Acres	Total Acres	
	Acres	Cost	Acres	Cost	Acres	Cost	Easement or Lease	Cost			
Idaho											
Oxford Slough WPA	0.00	\$0.00	0.00	\$0.00	1,878.41	\$530,000.00	0.00	\$0.00	0.00	1,878.41	
<i>WPA Total:</i>	<i>1</i>	<i>\$0.00</i>	<i>\$0.00</i>	<i>\$0.00</i>	<i>1,878.41</i>	<i>\$530,000.00</i>	<i>0.00</i>	<i>\$0.00</i>	<i>0.00</i>	<i>1,878.41</i>	
State Total	1	\$0.00	\$0.00	\$0.00	1,878.41	\$530,000.00	0.00	\$0.00	0.00	1,878.41	
Iowa											
<i>Iowa WMD</i>											
Boone	0.00	\$0.00	0.00	\$0.00	391.33	\$599,600.00	0.00	\$0.00	0.00	391.33	
Buena Vista	0.00	\$0.00	0.00	\$0.00	69.09	\$169,000.00	0.00	\$0.00	0.00	69.09	
Cerro Gordo	0.00	\$0.00	0.00	\$0.00	2,720.25	\$3,284,677.82	5.70	\$10,200.00	0.00	2,725.95	
Clay	69.45	\$413,200.00	0.00	\$0.00	989.98	\$1,759,306.85	0.00	\$0.00	0.00	989.98	
Dickinson	80.00	\$536,000.00	0.00	\$0.00	5,717.48	\$10,542,966.00	84.00	\$37,725.00	635.34	6,436.82	
Emmet	80.24	\$693,000.00	0.00	\$0.00	2,055.04	\$3,965,475.00	16.00	\$40,000.00	249.99	2,321.03	
Greene	0.00	\$0.00	0.00	\$0.00	1,133.43	\$3,305,500.00	0.00	\$0.00	0.00	1,133.43	
Guthrie	0.00	\$0.00	0.00	\$0.00	302.53	\$609,740.00	0.00	\$0.00	0.00	302.53	
Hancock	0.00	\$0.00	0.00	\$0.00	802.70	\$545,480.26	7.00	\$2,250.00	27.80	837.50	
Kossuth	0.00	\$0.00	0.00	\$0.00	3,519.86	\$7,995,046.98	23.00	\$28,775.00	26.87	3,569.73	
Osceola	0.00	\$0.00	0.00	\$0.00	0.00	\$0.00	37.00	\$17,250.00	4.00	41.00	
Palo Alto	0.00	\$0.00	0.00	\$0.00	731.81	\$1,180,592.65	176.00	\$222,850.00	58.00	965.81	
Pocahontas	0.00	\$0.00	0.00	\$0.00	654.16	\$1,716,400.00	0.00	\$0.00	0.00	654.16	
Polk	0.00	\$0.00	0.00	\$0.00	110.00	\$241,500.00	0.00	\$0.00	0.00	110.00	
Sac	0.00	\$0.00	0.00	\$0.00	930.45	\$2,493,280.00	0.00	\$0.00	168.09	1,098.54	
Winnebago	0.00	\$0.00	0.00	\$0.00	1,016.95	\$1,138,300.31	105.00	\$54,025.00	0.00	1,121.95	
Worth	0.00	\$0.00	0.00	\$0.00	1,491.84	\$1,088,329.87	18.00	\$9,250.00	6.66	1,516.50	
Wright	0.00	\$0.00	0.00	\$0.00	1,696.65	\$2,615,725.00	0.00	\$0.00	0.00	1,696.65	
<i>WMD Total:</i>	<i>18</i>	<i>\$229.69</i>	<i>\$1,642,200.00</i>	<i>\$0.00</i>	<i>24,333.55</i>	<i>\$43,250,920.74</i>	<i>471.70</i>	<i>\$422,325.00</i>	<i>1,176.75</i>	<i>25,982.00</i>	
State Total	18	\$229.69	\$1,642,200.00	\$0.00	24,333.55	\$43,250,920.74	471.70	\$422,325.00	1,176.75	25,982.00	
Maine											
Carlton Pond WPA	0.00	\$0.00	0.00	\$0.00	1,068.21	\$18,277.08	0.00	\$0.00	0.00	1,068.21	
<i>WPA Total:</i>	<i>1</i>	<i>\$0.00</i>	<i>\$0.00</i>	<i>\$0.00</i>	<i>1,068.21</i>	<i>\$18,277.08</i>	<i>0.00</i>	<i>\$0.00</i>	<i>0.00</i>	<i>1,068.21</i>	
State Total	1	\$0.00	\$0.00	\$0.00	1,068.21	\$18,277.08	0.00	\$0.00	0.00	1,068.21	
Michigan											
<i>Michigan WMD</i>											
Barry	0.00	\$0.00	0.00	\$0.00	110.00	\$550,000.00	0.00	\$0.00	271.30	381.30	
Jackson	0.00	\$0.00	0.00	\$0.00	160.00	\$170,000.00	0.00	\$0.00	500.21	660.21	
Van Buren	0.00	\$0.00	0.00	\$0.00	77.08	\$43,600.00	0.00	\$0.00	317.32	394.40	
<i>WMD Total:</i>	<i>3</i>	<i>\$0.00</i>	<i>\$0.00</i>	<i>\$0.00</i>	<i>347.08</i>	<i>\$763,600.00</i>	<i>0.00</i>	<i>\$0.00</i>	<i>1,088.83</i>	<i>1,435.91</i>	
State Total	3	\$0.00	\$0.00	\$0.00	347.08	\$763,600.00	0.00	\$0.00	1,088.83	1,435.91	
Minnesota											
Marshall WPA	0.00	\$0.00	0.00	\$0.00	510.00	\$400,400.00	0.00	\$0.00	0.00	510.00	
<i>WPA Total:</i>	<i>1</i>	<i>\$0.00</i>	<i>\$0.00</i>	<i>\$0.00</i>	<i>510.00</i>	<i>\$400,400.00</i>	<i>0.00</i>	<i>\$0.00</i>	<i>0.00</i>	<i>510.00</i>	
<i>Big Stone WMD</i>											
Lincoln	0.00	\$0.00	0.00	\$0.00	1,254.01	\$1,218,200.00	1,781.13	\$1,272,346.04	226.25	3,261.39	
Lyon	0.00	\$0.00	0.00	\$0.00	1,791.22	\$2,042,220.00	391.20	\$238,105.00	0.00	2,182.42	
<i>WMD Total:</i>	<i>2</i>	<i>\$0.00</i>	<i>\$0.00</i>	<i>\$0.00</i>	<i>3,045.23</i>	<i>\$3,260,420.00</i>	<i>2,172.33</i>	<i>\$1,510,451.04</i>	<i>226.25</i>	<i>5,443.81</i>	
<i>Detroit Lakes WMD</i>											
Becker	0.00	\$0.00	0.00	\$0.00	13,213.33	\$5,379,470.56	2,866.93	\$1,375,560.00	47.33	16,127.59	
Clay	61.58	\$144,500.00	-0.95	\$0.00	10,787.94	\$3,664,545.18	3,623.46	\$937,872.15	953.52	15,364.92	
Mahnomen	0.00	\$0.00	75.68	\$45,000.00	6,087.33	\$1,183,558.90	5,244.22	\$464,361.00	1,131.00	12,462.55	
Norman	0.00	\$0.00	0.00	\$0.00	1,120.00	\$400,000.00	0.00	\$0.00	463.88	1,583.88	
Polk	86.86	\$41,000.00	87.24	\$92,000.00	13,138.78	\$3,000,552.86	2,279.66	\$676,636.34	284.04	15,702.48	
<i>WMD Total:</i>	<i>5</i>	<i>\$148.44</i>	<i>\$185,500.00</i>	<i>\$161.97</i>	<i>\$137,000.00</i>	<i>\$44,347.38</i>	<i>\$13,628,127.50</i>	<i>\$14,014.27</i>	<i>\$3,454,429.49</i>	<i>2,879.77</i>	<i>61,241.42</i>
<i>Fergus Falls WMD</i>											
Douglas	0.00	\$0.00	0.00	\$0.00	9,913.86	\$3,486,143.20	6,102.36	\$983,105.98	710.01	16,726.23	
Grant	0.00	\$0.00	33.41	\$60,125.00	10,498.09	\$3,992,838.12	3,894.80	\$1,486,029.00	439.46	14,832.35	
Otter Tail	0.31	\$0.00	273.72	\$288,650.00	22,706.82	\$10,492,352.26	16,360.49	\$5,539,012.25	1,329.55	40,396.86	
Wilkin	0.00	\$0.00	0.00	\$0.00	2,432.80	\$900,064.35	309.00	\$93,750.00	95.10	2,836.90	
<i>WMD Total:</i>	<i>4</i>	<i>\$0.31</i>	<i>\$0.00</i>	<i>\$307.13</i>	<i>\$348,775.00</i>	<i>\$45,551.57</i>	<i>\$18,871,397.93</i>	<i>\$26,666.65</i>	<i>\$8,101,897.23</i>	<i>2,574.12</i>	<i>74,792.34</i>
<i>Litchfield WMD</i>											
Aitkin	0.00	\$0.00	0.00	\$0.00	69.86	\$28,000.00	0.00	\$0.00	42.00	111.86	

Table 2. Waterfowl Production Areas

State and Unit	FISCAL YEAR MBCF ACQUISITION				CUMULATIVE TOTALS AT END OF FISCAL YEAR						
	Purchased		Easement or Lease		MBCF				All Other Acres	Total Acres	
	Acres	Cost	Acres	Cost	Acres	Cost	Easement or Lease	Cost			
Minnesota (Continued)											
<i>Litchfield WMD</i>											
Kandiyohi	0.00	\$0.00	196.07	\$459,425.00	13,901.67	\$6,566,593.93	4,902.80	\$1,562,251.80	269.58	19,074.05	
McLeod	0.00	\$0.00	0.00	\$0.00	1,720.79	\$3,646,793.00	1,078.46	\$1,192,344.90	0.00	2,799.25	
Meeker	0.00	\$0.00	158.41	\$392,825.00	4,866.29	\$4,157,389.10	2,738.05	\$1,736,967.00	0.61	7,604.95	
Renville	0.00	\$0.00	0.00	\$0.00	1,658.03	\$2,211,040.00	0.00	\$0.00	165.67	1,823.70	
Stearns	1.71	\$104,500.00	0.00	\$0.00	9,175.07	\$3,127,833.87	1,602.81	\$734,660.70	300.70	11,078.58	
Todd	0.00	\$0.00	0.00	\$0.00	802.85	\$385,672.20	42.58	\$17,480.00	0.00	845.43	
Wright	-25.55	\$0.00	0.00	\$0.00	3,044.57	\$6,276,520.90	437.50	\$223,575.00	124.30	3,606.37	
WMD Total:	8	-23.84	\$104,500.00	\$852,250.00	35,239.13	\$26,399,843.00	10,802.20	\$5,467,279.40	902.86	46,944.19	
<i>Minnesota Valley WMD</i>											
Blue Earth	0.00	\$0.00	0.00	\$0.00	1,182.77	\$1,657,250.00	735.61	\$1,156,550.00	138.37	2,056.75	
Carver	0.00	\$0.00	0.00	\$0.00	0.00	\$0.00	47.57	\$68,976.50	219.00	266.57	
Dakota	0.00	\$0.00	0.00	\$0.00	73.90	\$201,747.00	0.00	\$0.00	11.05	84.95	
Le Sueur	0.00	\$0.00	0.00	\$0.00	356.11	\$525,754.50	242.15	\$222,878.50	85.88	684.14	
Rice	0.00	\$0.00	0.00	\$0.00	315.60	\$438,999.35	580.79	\$1,020,141.25	127.50	1,023.89	
Scott	0.00	\$0.00	0.00	\$0.00	40.00	\$109,200.00	164.21	\$248,001.00	82.91	287.12	
Sibley	0.00	\$0.00	0.00	\$0.00	793.52	\$1,007,681.32	253.25	\$173,190.00	112.36	1,159.13	
Steele	0.00	\$0.00	0.00	\$0.00	650.11	\$833,744.00	0.00	\$0.00	16.59	666.70	
Waseca	11.22	\$238,000.00	0.00	\$0.00	260.00	\$646,000.00	0.00	\$0.00	40.00	300.00	
WMD Total:	9	11.22	\$238,000.00	\$0.00	3,672.01	\$5,420,376.17	2,023.58	\$2,889,737.25	833.66	6,529.25	
<i>Morris WMD</i>											
Big Stone	20.30	\$72,300.00	694.47	\$913,200.00	11,555.04	\$2,413,245.83	11,019.14	\$4,954,456.16	206.97	22,781.15	
Chippewa	0.00	\$0.00	0.00	\$0.00	244.10	\$127,050.00	115.10	\$105,525.00	0.00	359.20	
Lac Qui Parle	0.00	\$0.00	0.00	\$0.00	3,808.79	\$1,002,339.73	2,020.06	\$995,191.00	468.76	6,297.61	
Pope	0.00	\$0.00	460.07	\$572,350.00	13,120.49	\$3,066,945.07	11,906.00	\$4,056,136.70	302.13	25,328.62	
Stevens	0.00	\$0.00	0.00	\$0.00	9,552.66	\$3,463,001.64	1,242.87	\$386,515.00	139.72	10,935.25	
Swift	0.00	\$0.00	27.30	\$40,300.00	7,635.58	\$1,860,080.17	2,194.97	\$1,028,119.40	320.00	10,150.55	
Traverse	0.00	\$0.00	0.00	\$0.00	4,105.55	\$1,469,588.63	1,443.61	\$307,665.00	0.00	5,549.16	
Yellow Medicine	0.00	\$0.00	160.00	\$140,850.00	1,082.68	\$879,683.30	1,273.77	\$963,152.40	332.00	2,688.45	
WMD Total:	8	20.30	\$72,300.00	\$1,666,700.00	51,104.89	\$14,281,934.37	31,215.52	\$12,796,760.66	1,769.58	84,089.99	
<i>Tamarac WMD</i>											
Cass	0.00	\$0.00	0.00	\$0.00	0.00	\$0.00	43.00	\$6,000.00	0.00	43.00	
Clearwater	0.00	\$0.00	304.00	\$160,500.00	0.00	\$0.00	1,183.50	\$299,175.00	304.00	1,487.50	
WMD Total:	2	0.00	\$0.00	\$160,500.00	0.00	\$0.00	1,226.50	\$305,175.00	304.00	1,530.50	
<i>Windom WMD</i>											
Cottonwood	0.00	\$0.00	0.00	\$0.00	3,137.96	\$1,681,553.85	233.12	\$132,625.00	354.00	3,725.08	
Faribault	0.00	\$0.00	0.00	\$0.00	830.06	\$800,991.80	129.37	\$110,775.00	0.00	959.43	
Freeborn	71.67	\$279,500.00	-15.00	\$0.00	1,879.94	\$2,652,517.25	132.99	\$161,650.00	290.61	2,303.54	
Jackson	0.00	\$0.00	0.00	\$0.00	4,695.00	\$4,497,146.28	428.02	\$658,825.00	0.07	5,123.09	
Martin	0.00	\$0.00	0.00	\$0.00	333.89	\$645,369.60	271.65	\$287,184.39	43.00	648.54	
Mower	0.00	\$0.00	0.00	\$0.00	0.00	\$0.00	0.00	\$0.00	137.94	137.94	
Murray	0.00	\$0.00	0.00	\$0.00	2,221.94	\$2,691,477.00	139.04	\$304,725.00	0.00	2,360.98	
Nobles	0.00	\$0.00	0.00	\$0.00	643.40	\$1,098,202.00	26.00	\$15,600.00	0.00	669.40	
Redwood	0.00	\$0.00	0.00	\$0.00	0.00	\$0.00	62.02	\$48,875.00	0.00	62.02	
Rock	0.00	\$0.00	0.00	\$0.00	0.00	\$0.00	104.79	\$233,950.00	0.00	104.79	
Watonwan	0.00	\$0.00	0.00	\$0.00	56.65	\$31,157.50	168.42	\$112,209.80	0.00	225.07	
WMD Total:	11	71.67	\$279,500.00	-15.00	\$0.00	\$14,098,415.28	1,695.42	\$2,066,419.19	825.62	16,319.88	
State Total	50	228.10	\$879,800.00	\$2,454.42	\$3,165,225.00	197,269.05	\$96,360,914.25	89,816.47	\$36,592,149.26	10,315.86	297,401.38
Montana											
<i>Benton Lake WMD</i>											
Cascade	0.00	\$0.00	0.00	\$0.00	727.46	\$299,606.00	78.00	\$15,550.00	193.50	998.96	
Chouteau	0.00	\$0.00	0.00	\$1,312.08	2,136.13	\$538,543.00	661.03	\$31,026.31	280.00	3,077.16	
Glacier	0.00	\$0.00	0.00	\$0.00	94.20	\$17,898.00	10,146.83	\$953,495.00	96.50	10,337.53	
Hill	0.00	\$0.00	0.00	\$1,332.00	0.00	\$0.00	918.00	\$92,601.00	378.93	1,296.93	
Lewis and Clark	0.00	\$0.00	0.00	\$0.00	0.00	\$0.00	3,317.07	\$1,071,782.00	2,810.88	6,127.95	
Liberty	0.00	\$0.00	0.00	\$0.00	0.00	\$0.00	428.00	\$14,100.00	0.00	428.00	
Pondera	0.00	\$0.00	0.00	\$0.00	640.00	\$93,000.00	8,715.01	\$1,990,000.00	94.96	9,449.97	
Powell	0.00	\$0.00	0.00	\$0.00	1,886.81	\$2,130,084.00	23,203.06	\$6,650,635.00	4,807.60	29,897.47	

Table 2. Waterfowl Production Areas

State and Unit	FISCAL YEAR MBCF ACQUISITION				CUMULATIVE TOTALS AT END OF FISCAL YEAR						
	Purchased		Easement or Lease		MBCF				All Other Acres	Total Acres	
	Acres	Cost	Acres	Cost	Acres	Cost	Easement or Lease	Cost			
Montana (Continued)											
<i>Benton Lake WMD</i>											
Teton *	0.00	\$0.00	0.00	\$0.00	1,486.05	\$376,253.00	5,413.13	\$241,818.00	921.64	7,820.82	
Toole	0.00	\$0.00	0.00	\$0.00	4,610.48	\$1,003,964.00	12,161.09	\$916,245.00	5.28	16,776.85	
WMD Total:	10	\$0.00	0.00	\$2,644.08	11,581.13	\$4,459,348.00	65,041.22	\$11,977,252.31	9,589.29	86,211.64	
<i>Bowdoin WMD</i>											
Blaine	0.00	\$0.00	0.00	\$0.00	2,435.26	\$167,340.00	7,783.93	\$896,395.00	11,783.00	22,002.19	
Phillips *	0.00	\$0.00	5,899.17	\$1,334,874.72	7,497.78	\$1,717,063.00	58,615.52	\$6,893,741.10	12,371.71	78,485.01	
Valley	0.00	\$0.00	0.00	\$0.00	0.00	\$0.00	201.00	\$28,160.00	0.00	201.00	
WMD Total:	3	\$0.00	5,899.17	\$1,334,874.72	9,933.04	\$1,884,403.00	66,600.45	\$7,818,296.10	24,154.71	100,688.20	
<i>Charles M. Russell WMD</i>											
Golden Valley	0.00	\$0.00	0.00	\$337.96	760.27	\$76,427.00	160.00	\$7,465.11	0.00	920.27	
Musselshell	0.00	\$0.00	0.00	\$864.00	532.45	\$163,001.00	160.00	\$14,411.20	0.00	692.45	
Petroleum	0.00	\$0.00	0.00	\$0.00	40.00	\$23,800.00	0.00	\$0.00	0.00	40.00	
Stillwater	0.00	\$0.00	0.00	\$0.00	1,828.10	\$207,625.00	0.00	\$0.00	0.38	1,828.48	
Yellowstone	0.00	\$0.00	0.00	\$0.00	486.42	\$55,600.00	0.00	\$0.00	0.00	486.42	
WMD Total:	5	\$0.00	0.00	\$1,201.96	3,647.24	\$526,453.00	320.00	\$21,876.31	0.38	3,967.62	
<i>NE Montana WMD</i>											
Daniels	0.00	\$0.00	0.00	\$0.00	1,080.58	\$97,669.00	472.65	\$41,125.00	546.52	2,099.75	
Roosevelt	0.00	\$0.00	0.00	\$0.00	179.20	\$14,000.00	7,402.42	\$392,500.00	0.00	7,581.62	
Sheridan	0.00	\$0.00	0.00	\$0.00	9,328.01	\$950,442.23	10,030.20	\$699,025.00	2,677.13	22,035.34	
WMD Total:	3	\$0.00	0.00	\$0.00	10,587.79	\$1,062,111.23	17,905.27	\$1,132,650.00	3,223.65	31,716.71	
<i>NW Montana - Flathead WMD</i>											
Flathead	0.00	\$0.00	0.00	\$0.00	4,410.31	\$2,246,518.00	0.00	\$0.00	996.51	5,406.82	
WMD Total:	1	\$0.00	0.00	\$0.00	4,410.31	\$2,246,518.00	0.00	\$0.00	996.51	5,406.82	
<i>NW Montana - Lake WMD</i>											
Lake *	0.00	\$0.00	0.00	\$0.00	1,480.86	\$1,460,555.00	4,131.61	\$3,103,430.00	1,949.14	7,561.61	
WMD Total:	1	\$0.00	0.00	\$0.00	1,480.86	\$1,460,555.00	4,131.61	\$3,103,430.00	1,949.14	7,561.61	
State Total	23	0.00	\$0.00	5,899.17	\$1,338,720.76	41,640.37	\$11,639,388.23	153,998.55	\$24,053,504.72	39,913.68	235,552.60
Nebraska											
<i>Rainwater Basin WMD</i>											
Adams	0.00	\$0.00	0.00	\$0.00	160.00	\$110,000.00	0.00	\$11,316.89	234.56	394.56	
Clay	0.00	\$0.00	0.00	\$0.00	4,216.27	\$1,622,444.00	0.80	\$0.00	2,913.86	7,130.93	
Fillmore	0.00	\$0.00	0.00	\$0.00	2,937.60	\$1,142,453.00	6.60	\$24.00	638.90	3,583.10	
Franklin	0.00	\$0.00	0.00	\$0.00	1,625.96	\$402,698.00	0.00	\$0.00	319.24	1,945.20	
Gosper	0.00	\$0.00	0.00	\$0.00	1,451.50	\$233,923.00	0.00	\$0.00	0.00	1,451.50	
Hall *	0.00	\$0.00	0.00	\$0.00	328.77	\$433,000.00	0.00	\$0.00	320.70	649.47	
Hamilton *	0.00	\$0.00	0.00	\$0.00	400.00	\$407,450.00	0.00	\$5,899.02	785.17	1,185.17	
Kearney *	0.00	\$0.00	0.00	\$0.00	2,874.43	\$657,681.00	0.00	\$0.00	253.98	3,128.41	
Phelps	0.00	\$0.00	0.00	\$0.00	4,195.14	\$3,052,111.00	0.00	\$0.00	626.39	4,821.53	
Polk FSA **	0.00	\$0.00	0.00	\$0.00	0.00	\$0.00	0.00	\$0.00	140.78	140.78	
Saline FSA **	0.00	\$0.00	0.00	\$0.00	0.00	\$0.00	0.00	\$0.00	104.35	104.35	
Seward	0.00	\$0.00	0.00	\$0.00	278.67	\$101,746.45	0.00	\$0.00	342.31	620.98	
York *	0.00	\$0.00	0.00	\$0.00	679.20	\$194,429.00	0.00	\$0.00	372.86	1,052.06	
WMD Total:	11	\$0.00	0.00	\$0.00	19,147.54	\$8,357,935.45	7.40	\$17,239.91	7,053.10	26,208.04	
State Total	11	0.00	\$0.00	0.00	19,147.54	\$8,357,935.45	7.40	\$17,239.91	7,053.10	26,208.04	
North Dakota											
<i>Arrowwood WMD</i>											
Eddy *	0.00	\$0.00	0.00	\$0.00	4,627.21	\$498,001.00	11,810.63	\$314,995.00	446.34	16,884.18	
Foster	0.00	\$0.00	0.00	\$0.00	1,487.07	\$96,568.00	6,946.00	\$239,015.00	0.00	8,433.07	
WMD Total:	2	\$0.00	0.00	\$0.00	6,114.28	\$594,569.00	18,756.63	\$554,010.00	446.34	25,317.25	
<i>Audubon WMD</i>											
Dunn FSA **	0.00	\$0.00	0.00	\$0.00	0.00	\$0.00	0.00	\$0.00	1,235.20	1,235.20	
Hettinger	0.00	\$0.00	0.00	\$0.00	0.00	\$0.00	0.00	\$0.00	1,202.60	1,202.60	
McLean	0.00	\$0.00	1,452.00	\$652,150.00	4,219.10	\$536,234.00	24,749.00	\$2,300,815.00	24,466.68	53,434.78	
Mercer *	0.00	\$0.00	0.00	\$0.00	0.00	\$0.00	0.00	\$0.00	1,046.00	1,046.00	
Sheridan *	0.00	\$0.00	580.00	\$144,125.00	7,661.50	\$468,427.00	34,912.34	\$2,065,545.00	32,185.64	74,759.48	
Ward	0.00	\$0.00	42.00	\$49,225.00	5,868.60	\$489,211.00	38,941.61	\$1,466,039.00	14,652.98	59,463.19	
WMD Total:	5	\$0.00	2,074.00	\$845,500.00	17,749.20	\$1,493,872.00	98,602.95	\$5,832,399.00	74,789.10	191,141.25	

Table 2. Waterfowl Production Areas

State and Unit	FISCAL YEAR MBCF ACQUISITION				CUMULATIVE TOTALS AT END OF FISCAL YEAR					
	Purchased		Easement or Lease		MBCF				All Other Acres	Total Acres
	Acres	Cost	Acres	Cost	Acres	Cost	Easement or Lease	Cost		
North Dakota (Continued)										
<i>Chase Lake Prairie Project WMD</i>										
Stutsman *	0.00	\$0.00	2,403.45	\$2,675,300.00	23,403.35	\$1,308,016.00	49,393.44	\$5,391,278.00	38,153.07	110,949.86
Wells *	0.00	\$0.00	0.00	\$0.00	7,471.61	\$1,153,059.00	13,843.00	\$755,627.00	6,507.34	27,821.95
WMD Total:	2	\$0.00	2,403.45	\$2,675,300.00	30,874.96	\$2,461,075.00	63,236.44	\$6,146,905.00	44,660.41	138,771.81
<i>Crosby WMD</i>										
Burke	0.00	\$0.00	0.00	\$0.00	3,545.96	\$180,068.00	26,862.00	\$733,055.00	20,161.14	50,569.10
Divide	0.00	\$0.00	6.60	\$1,375.00	9,444.62	\$474,790.00	35,785.69	\$812,485.00	11,557.66	56,787.97
Williams *	0.00	\$0.00	0.00	\$0.00	4,163.17	\$278,057.00	8,542.00	\$258,075.00	1,844.86	14,550.03
WMD Total:	3	\$0.00	6.60	\$1,375.00	17,153.75	\$932,915.00	71,189.69	\$1,803,615.00	33,563.66	121,907.10
<i>Devils Lake WMD</i>										
Benson *	0.00	\$0.00	504.00	\$320,300.00	7,296.77	\$607,908.00	36,581.81	\$1,548,080.00	9,032.05	52,910.63
Cavalier *	0.00	\$0.00	0.00	\$0.00	10,129.12	\$1,354,471.00	13,920.00	\$403,040.00	1,272.71	25,321.83
Grand Forks	0.00	\$0.00	27.00	\$11,575.00	6,774.43	\$1,594,422.05	1,145.00	\$58,060.00	641.26	8,560.69
Nelson *	0.00	\$0.00	0.00	\$0.00	3,203.23	\$174,341.00	37,856.70	\$1,336,445.00	2,905.12	43,965.05
Pembina *	0.00	\$0.00	0.00	\$0.00	2,258.56	\$218,677.00	139.00	\$1,900.00	293.90	2,691.46
Ramsey *	0.00	\$0.00	0.00	\$0.00	8,183.04	\$1,144,252.00	29,524.00	\$1,041,285.00	2,059.39	39,766.43
Towner *	0.00	\$0.00	137.00	\$69,450.00	3,837.02	\$494,146.00	24,783.40	\$685,790.00	7,326.35	35,946.77
Walsh *	0.00	\$0.00	143.00	\$82,650.00	1,393.19	\$98,128.00	8,463.00	\$254,150.00	1,234.63	11,090.82
WMD Total:	8	\$0.00	811.00	\$483,975.00	43,075.36	\$5,686,345.05	152,412.91	\$5,328,750.00	24,765.41	220,253.68
<i>J. Clark Salyer WMD</i>										
Bottineau *	0.00	\$0.00	0.00	\$0.00	2,334.06	\$200,763.00	30,368.69	\$1,758,930.00	1,305.00	34,007.75
McHenry *	0.00	\$0.00	88.00	\$70,975.00	4,888.80	\$374,404.50	32,117.00	\$1,421,070.00	34,728.03	71,733.83
Pierce *	0.00	\$0.00	185.00	\$123,050.00	8,403.66	\$936,855.00	37,869.00	\$1,641,110.00	13,253.57	59,526.23
Renville	0.00	\$0.00	0.00	\$0.00	311.09	\$23,523.00	17,028.00	\$1,890,140.00	54.60	17,393.69
Rolette	0.00	\$0.00	72.00	\$50,800.00	5,685.92	\$759,347.00	20,876.01	\$741,620.00	722.96	27,284.89
WMD Total:	5	\$0.00	345.00	\$244,825.00	21,623.53	\$2,294,892.50	138,258.70	\$7,452,870.00	50,064.16	209,946.39
<i>Kulm WMD</i>										
Dickey *	0.00	\$0.00	752.22	\$1,067,650.00	9,735.40	\$1,150,816.00	31,449.02	\$4,993,350.00	20,197.01	61,381.43
La Moure *	0.00	\$0.00	3,365.00	\$5,552,950.00	4,799.96	\$505,095.00	19,573.25	\$9,478,949.00	2,629.31	27,002.52
Logan *	0.00	\$0.00	258.23	\$113,600.00	11,226.24	\$1,006,598.00	39,867.73	\$1,451,786.00	24,938.19	76,032.16
McIntosh *	0.00	\$0.00	410.00	\$284,075.00	17,373.48	\$1,368,865.00	31,645.00	\$1,268,360.00	14,812.12	63,830.60
WMD Total:	4	\$0.00	4,785.45	\$7,018,275.00	43,135.08	\$4,031,374.00	122,535.00	\$17,192,445.00	62,576.63	228,246.71
<i>Long Lake WMD</i>										
Burleigh *	0.00	\$0.00	904.00	\$417,900.00	9,451.44	\$1,899,164.00	28,666.10	\$1,341,350.00	39,541.09	77,658.63
Emmons *	0.00	\$0.00	145.00	\$74,775.00	3,135.29	\$174,321.75	12,738.00	\$554,225.00	3,992.72	19,866.01
Kidder *	0.00	\$0.00	61.00	\$24,925.00	5,547.52	\$438,439.00	65,127.02	\$1,134,305.00	50,445.99	121,120.53
WMD Total:	3	\$0.00	1,110.00	\$517,600.00	18,134.25	\$2,511,924.75	106,531.12	\$3,029,880.00	93,979.80	218,645.17
<i>Lostwood WMD</i>										
Mountrail *	0.00	\$0.00	125.00	\$51,675.00	9,905.10	\$940,661.00	32,106.00	\$1,099,806.00	37,721.28	79,732.38
WMD Total:	1	\$0.00	125.00	\$51,675.00	9,905.10	\$940,661.00	32,106.00	\$1,099,806.00	37,721.28	79,732.38
<i>Tewaukon WMD</i>										
Ransom	0.00	\$0.00	363.00	\$505,725.00	4,315.02	\$617,357.00	21,194.08	\$2,222,200.00	3,959.58	29,468.68
Richland	0.00	\$0.00	183.00	\$224,625.00	6,420.80	\$1,676,181.00	2,444.80	\$652,245.00	4,886.32	13,751.92
Sargent *	0.00	\$0.00	473.00	\$766,150.00	3,537.46	\$305,439.00	15,065.40	\$1,768,760.00	10,000.81	28,603.67
WMD Total:	3	\$0.00	1,019.00	\$1,496,500.00	14,273.28	\$2,598,977.00	38,704.28	\$4,643,205.00	18,846.71	71,824.27
<i>Valley City WMD</i>										
Barnes *	0.00	\$0.00	1,162.00	\$1,822,425.00	6,661.68	\$958,087.00	21,255.00	\$4,126,510.00	2,347.51	30,264.19
Cass	0.00	\$0.00	0.00	\$0.00	3,439.89	\$628,344.00	1,709.00	\$133,825.00	50.90	5,199.79
Griggs	0.00	\$0.00	148.00	\$82,570.00	3,069.46	\$373,990.00	16,994.00	\$740,275.00	260.25	20,323.71
Steele	0.00	\$0.00	0.00	\$0.00	3,249.25	\$538,345.00	4,045.00	\$274,320.00	359.30	7,653.55
Traill	0.00	\$0.00	0.00	\$0.00	719.36	\$75,109.00	233.00	\$4,830.00	1.00	953.36
WMD Total:	5	\$0.00	1,310.00	\$1,904,995.00	17,139.64	\$2,573,875.00	44,236.00	\$5,279,760.00	3,018.96	64,394.60
State Total	41	\$0.00	13,989.50	\$15,240,020.00	239,178.43	\$26,120,480.30	886,569.72	\$58,363,645.00	444,432.46	1,570,180.61
South Dakota										
<i>Huron WMD</i>										
Beadle *	0.00	\$0.00	5,441.66	\$3,723,225.00	7,419.36	\$1,855,212.69	52,249.21	\$12,632,715.00	1,938.59	61,607.16
Buffalo	0.00	\$0.00	0.00	\$0.00	0.00	\$0.00	2,631.06	\$478,453.00	6,393.23	9,024.29

Table 2. Waterfowl Production Areas

State and Unit	FISCAL YEAR MBCF ACQUISITION				CUMULATIVE TOTALS AT END OF FISCAL YEAR					
	Purchased		Easement or Lease		MBCF				All Other Acres	Total Acres
	Acres	Cost	Acres	Cost	Acres	Cost	Easement or Lease	Cost		
South Dakota (Continued)										
<i>Huron WMD</i>										
Hand *	30.00	\$36,000.00	1,298.76	\$919,475.00	3,700.56	\$616,260.35	70,342.63	\$12,763,849.00	6,806.72	80,849.91
Hughes	0.00	\$0.00	0.00	\$0.00	455.99	\$82,800.00	3,260.89	\$444,875.00	4.20	3,721.08
Hyde *	0.00	\$0.00	383.37	\$241,100.00	0.00	\$0.00	34,968.06	\$4,295,760.00	13,493.14	48,461.20
Jerauld *	0.00	\$0.00	1,284.64	\$788,850.00	1,430.40	\$217,041.00	26,815.47	\$4,016,240.00	894.70	29,140.57
Sanborn *	0.00	\$0.00	2,078.47	\$1,142,450.00	93.00	\$5,250.00	45,444.48	\$8,730,470.00	568.20	46,105.68
Sully *	0.00	\$0.00	0.00	\$0.00	266.48	\$9,993.00	4,072.73	\$626,590.00	1,983.48	6,322.69
WMD Total:	8	\$36,000.00	10,486.90	\$6,815,100.00	13,365.79	\$2,786,557.04	239,784.53	\$43,988,952.00	32,082.26	285,232.58
<i>Lacreek WMD</i>										
Haakon FSA **	0.00	\$0.00	0.00	\$0.00	0.00	\$0.00	0.00	\$0.00	1,806.10	1,806.10
Jones FSA **	0.00	\$0.00	0.00	\$0.00	0.00	\$0.00	0.00	\$0.00	221.97	221.97
Stanley FSA **	0.00	\$0.00	0.00	\$0.00	0.00	\$0.00	0.00	\$0.00	1,430.30	1,430.30
WMD Total:	0	\$0.00	0.00	\$0.00	0.00	\$0.00	0.00	\$0.00	3,458.37	3,458.37
<i>Lake Andes WMD</i>										
Aurora *	0.00	\$0.00	913.57	\$608,900.00	4,876.08	\$798,316.00	42,599.58	\$8,793,695.00	1,473.37	48,949.03
Bon Homme *	0.00	\$0.00	0.00	\$0.00	1,174.17	\$323,624.90	403.00	\$217,130.00	323.54	1,900.71
Brule	0.00	\$0.00	974.93	\$765,150.00	1,074.13	\$89,404.00	22,903.67	\$4,587,130.00	2,501.77	26,479.57
Charles Mix *	0.00	\$0.00	0.00	\$0.00	4,110.82	\$1,162,147.00	8,988.41	\$1,819,935.00	1,396.31	14,495.54
Clay *	0.00	\$0.00	0.00	\$0.00	40.00	\$8,000.00	7.00	\$200.00	52.50	99.50
Davison *	0.00	\$0.00	160.00	\$146,200.00	229.92	\$24,540.00	938.67	\$561,665.00	175.10	1,343.69
Douglas *	0.00	\$0.00	0.00	\$0.00	3,852.05	\$647,691.00	4,093.28	\$521,450.00	619.27	8,564.60
Hanson *	0.00	\$0.00	332.59	\$398,100.00	1,075.60	\$281,853.00	4,059.40	\$1,643,130.00	132.80	5,267.80
Hutchinson *	0.00	\$0.00	0.00	\$0.00	789.51	\$227,646.25	1,057.00	\$151,075.00	172.50	2,019.01
Lincoln	0.00	\$0.00	0.00	\$0.00	177.22	\$39,925.00	300.50	\$112,645.00	0.00	477.72
Tripp FSA **	0.00	\$0.00	0.00	\$0.00	0.00	\$0.00	0.00	\$0.00	5.90	5.90
Turner *	0.00	\$0.00	0.00	\$0.00	991.73	\$727,444.90	353.00	\$106,090.00	126.90	1,471.63
Union	0.00	\$0.00	0.00	\$0.00	96.02	\$22,331.00	0.00	\$0.00	0.00	96.02
Yankton	0.00	\$0.00	0.00	\$0.00	294.63	\$128,562.00	123.00	\$5,375.00	365.60	783.23
WMD Total:	13	\$0.00	2,381.09	\$1,918,350.00	18,781.88	\$4,481,485.05	85,826.51	\$18,519,520.00	7,345.56	111,953.95
<i>Madison WMD</i>										
Brookings *	0.00	\$0.00	0.00	\$0.00	6,159.47	\$1,650,276.70	7,976.05	\$2,188,866.00	4,303.31	18,438.83
Deuel *	0.00	\$0.00	495.07	\$234,992.00	3,228.87	\$492,022.00	29,324.36	\$4,329,067.00	8,275.93	40,829.16
Hamlin *	0.00	\$0.00	0.00	\$0.00	3,375.89	\$943,938.00	6,242.74	\$1,130,630.00	323.90	9,942.53
Kingsbury *	0.00	\$0.00	389.40	\$455,783.00	5,256.36	\$1,258,255.50	26,010.60	\$4,515,886.00	5,725.64	36,992.60
Lake *	0.00	\$0.00	0.00	\$0.00	5,672.95	\$1,296,457.75	6,657.32	\$1,953,635.00	917.12	13,247.39
McCook *	0.00	\$0.00	0.00	\$0.00	3,362.96	\$680,845.60	7,018.31	\$1,582,120.00	958.68	11,339.95
Miner *	0.00	\$0.00	1,512.74	\$1,279,600.00	1,545.87	\$153,695.00	29,872.02	\$10,120,265.00	1,299.80	32,717.69
Minnehaha *	0.00	\$0.00	0.00	\$0.00	4,606.03	\$1,342,286.00	1,720.44	\$387,620.00	79.10	6,405.57
Moody *	0.00	\$0.00	0.00	\$0.00	2,903.78	\$927,478.85	1,959.02	\$645,930.00	828.37	5,691.17
WMD Total:	9	\$0.00	2,397.21	\$1,970,375.00	36,112.18	\$8,745,255.40	116,780.86	\$26,854,019.00	22,711.85	175,604.89
<i>Sand Lake WMD</i>										
Brown	0.00	\$0.00	1,681.60	\$1,586,575.00	4,207.65	\$865,523.80	54,036.46	\$9,302,275.00	1,444.49	59,688.60
Campbell	0.00	\$0.00	5,307.72	\$1,508,725.00	1,919.71	\$185,541.00	31,674.23	\$3,916,955.00	2,495.74	36,089.68
Corson FSA **	0.00	\$0.00	0.00	\$0.00	0.00	\$0.00	0.00	\$0.00	1,105.90	1,105.90
Dewey FSA **	0.00	\$0.00	0.00	\$0.00	0.00	\$0.00	0.00	\$0.00	2,361.80	2,361.80
Edmunds *	0.00	\$0.00	1,001.71	\$740,188.00	9,074.49	\$1,767,201.00	135,058.10	\$16,091,123.00	3,111.04	147,243.63
Faulk *	0.00	\$0.00	219.00	\$145,750.00	2,726.88	\$712,995.00	139,724.81	\$12,558,540.00	3,721.51	146,173.20
McPherson *	9.72	\$5,975.00	2,144.30	\$784,100.00	19,242.02	\$3,381,611.80	151,167.53	\$10,472,515.00	14,221.33	184,630.88
Potter *	0.00	\$0.00	1,488.93	\$1,105,375.00	652.63	\$71,179.00	29,329.27	\$4,081,730.00	415.10	30,397.00
Spink *	0.00	\$0.00	1,113.69	\$948,760.00	2,220.86	\$399,130.00	30,729.17	\$5,598,010.00	1,308.20	34,258.23
Walworth *	0.00	\$0.00	0.00	\$0.00	1,270.54	\$191,800.00	22,592.69	\$2,229,115.00	853.30	24,716.53
WMD Total:	8	\$5,975.00	12,956.95	\$6,819,473.00	41,314.78	\$7,574,981.60	594,312.26	\$64,250,263.00	31,038.41	666,665.45
<i>Waubay WMD</i>										
Clark *	0.00	\$0.00	0.00	\$0.00	5,819.05	\$814,503.90	46,960.74	\$3,514,225.00	1,186.43	53,966.22
Codington *	0.00	\$0.00	880.35	\$450,650.00	4,915.24	\$882,837.70	11,997.52	\$1,393,165.00	1,546.65	18,459.41
Day	0.00	\$0.00	412.74	\$156,975.00	7,025.43	\$847,107.00	45,681.93	\$3,502,020.00	1,653.75	54,361.11
Grant	0.00	\$0.00	390.43	\$234,610.00	5,362.99	\$1,005,000.00	25,102.15	\$4,361,795.00	698.06	31,163.20
Marshall *	0.00	\$0.00	0.00	\$0.00	10,841.65	\$1,923,929.00	58,819.91	\$4,830,956.00	767.26	70,428.82

Table 2. Waterfowl Production Areas

State and Unit	FISCAL YEAR MBCF ACQUISITION				CUMULATIVE TOTALS AT END OF FISCAL YEAR						
	Purchased		Easement or Lease		MBCF				All Other Acres	Total Acres	
	Acres	Cost	Acres	Cost	Purchased		Easement or Lease				
South Dakota (Continued)											
<i>Waubay WMD</i>											
Roberts *	0.00	\$0.00	84.00	\$53,025.00	4,908.32	\$823,410.80	52,197.12	\$4,040,675.00	2,728.08	59,833.52	
<i>WMD Total:</i>	<i>6</i>	<i>\$0.00</i>	<i>1,767.52</i>	<i>\$895,260.00</i>	<i>38,872.68</i>	<i>\$6,296,788.40</i>	<i>240,759.37</i>	<i>\$21,642,836.00</i>	<i>8,580.23</i>	<i>288,212.28</i>	
State Total	44	\$41,975.00	29,989.67	\$18,418,558.00	148,447.31	\$29,885,067.49	1,277,463.53	\$175,255,590.00	105,216.68	1,531,127.52	
Wisconsin											
<i>Leopold WMD</i>											
Adams	0.00	\$0.00	0.00	\$0.00	344.00	\$172,500.00	0.00	\$0.00	0.00	344.00	
Columbia	0.00	\$0.00	0.00	\$0.00	3,745.43	\$5,354,951.45	0.00	\$0.00	97.85	3,843.28	
Dane	0.00	\$0.00	0.00	\$0.00	1,671.36	\$2,979,875.65	0.00	\$0.00	117.21	1,788.57	
Dodge	0.00	\$0.00	0.00	\$0.00	698.98	\$1,079,141.16	0.43	\$1,000.00	154.81	854.22	
Fond Du Lac	0.00	\$0.00	0.00	\$0.00	881.06	\$1,699,888.00	0.00	\$0.00	373.84	1,254.90	
Jefferson	0.00	\$0.00	0.00	\$0.00	249.79	\$241,239.00	0.00	\$0.00	62.00	311.79	
Manitowoc	0.00	\$0.00	0.00	\$0.00	256.13	\$186,000.00	0.00	\$0.00	75.00	331.13	
Marquette	0.00	\$0.00	0.00	\$0.00	259.97	\$119,480.00	0.00	\$0.00	0.00	259.97	
Ozaukee	0.00	\$0.00	0.00	\$0.00	709.30	\$1,591,413.40	0.00	\$0.00	0.00	709.30	
Rock	0.00	\$0.00	0.00	\$0.00	349.32	\$302,358.71	0.00	\$0.00	100.00	449.32	
Sauk	0.00	\$0.00	0.00	\$0.00	26.87	\$191,000.00	0.00	\$0.00	210.88	237.75	
Sheboygan	0.00	\$0.00	0.00	\$0.00	499.03	\$1,364,636.94	0.00	\$0.00	311.99	811.02	
Waushara	0.00	\$0.00	0.00	\$0.00	232.30	\$243,000.00	0.00	\$6,000.00	0.00	232.30	
Winnebago	0.00	\$0.00	0.00	\$0.00	1,870.13	\$1,348,651.00	0.00	\$0.00	249.24	2,119.37	
<i>WMD Total:</i>	<i>14</i>	<i>\$0.00</i>	<i>0.00</i>	<i>\$0.00</i>	<i>11,793.67</i>	<i>\$16,874,135.31</i>	<i>0.43</i>	<i>\$7,000.00</i>	<i>1,752.82</i>	<i>13,546.92</i>	
<i>St. Croix WMD</i>											
Dunn	0.00	\$0.00	0.00	\$0.00	726.45	\$1,043,700.00	0.00	\$0.00	150.80	877.25	
Polk	0.00	\$0.00	0.00	\$0.00	935.09	\$875,424.00	0.00	\$0.00	221.98	1,157.07	
St. Croix	65.00	\$299,000.00	0.00	\$0.00	5,773.55	\$9,059,904.56	0.64	\$1,500.00	432.41	6,206.60	
<i>WMD Total:</i>	<i>3</i>	<i>\$299,000.00</i>	<i>0.00</i>	<i>\$0.00</i>	<i>7,435.09</i>	<i>\$10,979,028.56</i>	<i>0.64</i>	<i>\$1,500.00</i>	<i>805.19</i>	<i>8,240.92</i>	
State Total	17	\$299,000.00	0.00	\$0.00	19,228.76	\$27,853,163.87	1.07	\$8,500.00	2,558.01	21,787.84	
Grand Total	209	\$562.51	\$2,862,975.00	52,332.76	\$38,162,523.76	692,538.71	\$244,779,747.41	2,408,328.44	\$294,712,953.89	611,755.37	3,712,622.52

* These counties include interests transferred by the FSA.

** Denotes interests transferred by the FSA.

FSA - Farm Service Agency (Formerly Farmers Home Administration, Department of Agriculture)

Negative numbers in the *Fiscal Year MBCF Acquisition* acreage totals reflect acres disposed through land-for-land exchanges, where the Service exchanged previously acquired WPA lands for other lands to consolidate land holdings, improve land management efficiency, and eliminate confusion for the visiting public.

North American Wetlands Conservation Fund: Summary of MBCC Approvals for Fiscal Year 2013

The Migratory Bird Conservation Commission approved 53 standard wetland conservation project proposals for funding in Fiscal Year 2013 under the North American Wetlands Conservation Act. A total of \$59,403,424 from the North American Wetlands Conservation Fund, together with \$141,238,559 in partner funds, are supporting 37 projects in the United States, 8 in Canada, and 8 in Mexico. The following tables provide summary and detailed project information.

Fiscal Year 2013

Standard projects Approved by the Migratory Bird Conservation Commission and Active Under the North American Wetlands Conservation Act

<i>Country</i>	<i>Number of Projects</i>	<i>Act Funds</i>	<i>Partner Funds</i>	<i>Acres Affected</i>
U.S.	37	\$36,268,775	\$95,537,383	246,124
Canada	8	\$20,671,565	\$31,122,105	36,744
Mexico	8	\$2,463,084	\$14,579,071	27,489
Totals	53	\$59,403,424	\$141,238,559	310,357

U.S. Small Grants	46	\$3,028,878	\$7,575,209	52,145
--------------------------	-----------	--------------------	--------------------	---------------

In addition, the Commission approved 46 United States small grant proposals, totaling \$3,028,878 from the Fund, supported by \$7,575,209 in total partner funds, affecting 52,145 acres.

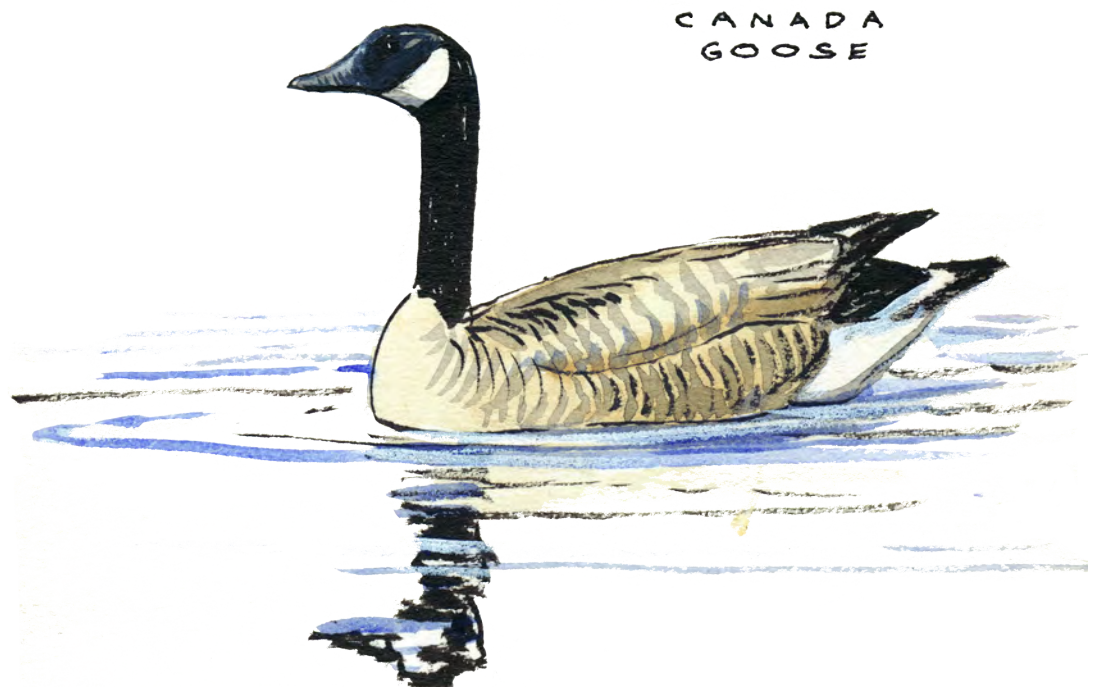


Table 3. U.S. Wetlands Conservation Standard Grants Proposals

<i>Title (rank)</i>	<i>State</i>	<i>NAWCA Request</i>	<i>Partner Match</i>	<i>Acres</i>	<i>Grant Funds for USFWS</i>	<i>Coastal Project</i>
Butte and Colusa Basins Wetland IV (1)	CA	\$1,000,000	\$4,108,049	3,209		No
Coastal Prairie Wetlands Preservation Project (9)	TX	\$1,000,000	\$3,514,950	5,223		Yes
Conservation in the Confluence III (12)	MO	\$1,000,000	\$5,211,300	3,041		No
Dragon Run (15)	VA	\$1,000,000	\$2,140,000	14,525		Yes
Fall River Valley - Big Valley Wetlands I Project (13)	CA	\$1,000,000	\$2,512,192	6,481		No
Harvey Dunn Grassland Preservation Project - V (11)	SD	\$1,000,000	\$1,141,111	1,657		No
Lower Mississippi Valley Wetlands (8)	AR, LA, MS	\$1,000,000	\$4,290,292	6,035		No
Missouri Coteau Habitat Conservation Project - XI (2)	ND	\$1,000,000	\$1,081,332	5,463		No
New York's Great Swamp Corridor: Phase II (16)	NY	\$1,000,000	\$2,720,405	1,561		Yes
North Dakota Great Plains Project - VII (19)	ND	\$740,866	\$742,693	15,557	\$740,866	No
North Platte River Wetlands (7)	NE	\$1,000,000	\$2,175,531	3,066		No
Northeastern California Wetlands Habitat Project, Phase II (17)	CA	\$1,000,000	\$1,686,974	3,620		No
Prairie Lakes 6 Wetland Initiative (4)	IA	\$1,000,000	\$3,442,255	3,128		No
Rio Grande Corridor New Mexico, Phase I (18)	NM	\$1,000,000	\$2,093,607	1,857	\$382,090	No
San Joaquin Wetlands Conservation (5)	CA	\$1,000,000	\$1,503,468	3,724		No
Santee Delta and Winyah Bay Protection Project: Phase II (3)	SC	\$1,000,000	\$4,140,185	2,951	\$678,700	Yes
South Carolina Low Country Wetlands Initiative III (14)	SC	\$1,000,000	\$3,938,215	4,764		Yes
Texas Gulf Coast X (6)	TX	\$996,110	\$1,500,921	8,300		Yes
Texas Mid-Coast Wetlands Project (10)	TX	\$734,670	\$1,474,000	2,431		Yes
		\$18,471,646	\$49,417,480	96,593		
<i>Title (rank)</i>	<i>State</i>	<i>NAWCA Request</i>	<i>Partner Match</i>	<i>Acres</i>	<i>Grant Funds for USFWS</i>	<i>Coastal Project</i>
Boyles Island (16)	GA	\$900,000	\$1,804,067	2,134		Yes
Delaware Bayshore Land Conservation Initiative - Phase I (12)	DE	\$1,000,000	\$3,366,000	1,303		Yes
Glaciated Wetlands and Prairies of ND and MN - III (1)	MN,ND	\$1,000,000	\$1,026,892	5,590		No
Green Bay - Marquette Coastal (10)	WI	\$1,000,000	\$2,052,971	3,108		Partial
Gum Cove (7)	LA	\$1,000,000	\$2,155,025	8,532		Yes
Indianola WMA Wetland Habitat Enhancements (8)	MS	\$999,504	\$3,719,159	1,528		No
James River Lowlands/Missouri Coteau Project - V (4)	SD	\$1,000,000	\$1,043,425	3,991		No
Liner's Canal (17)	LA	\$997,506	\$2,058,910	16,239		Yes
New Hampshire Great Bay Estuary, Phase VII (15)	NH	\$900,119	\$2,117,625	974		Yes
North Dakota Northern Prairie Project II (3)	ND	\$1,000,000	\$1,241,905	43,132	\$1,000,000	No
San Luis Valley Rio Grande Initiative IV (9)	CO	\$1,000,000	\$3,478,100	2,669		No
South Carolina Wetlands Landscape Initiative I (2)	SC	\$1,000,000	\$2,825,925	6,900		Yes
Southeastern North Carolina Wetlands Initiative III (14)	NC	\$1,000,000	\$2,900,000	3,125		Yes
Southern San Joaquin Valley Wetland Habitat Project, Phase II (5)	CA	\$1,000,000	\$1,819,191	3,016		No
Southwest Wetland Initiative of Minnesota (SWIM) (6)	MN	\$1,000,000	\$7,144,000	3,377		No
Upper Green River (11)	WY	\$1,000,000	\$2,918,223	40,071	\$160,000	No
Willamette Valley Partnership, I (13)	OR	\$1,000,000	\$2,300,652	950		No
Wisconsin Northwest Pothole Habitat Initiative Phase VI (18)	WI	\$1,000,000	\$2,147,833	2,892		No
		\$17,797,129	\$46,119,903	149,531		

Table 4. U.S. Wetlands Conservation Small Grant Proposals

<i>Project Title</i>	<i>Grantee Organization</i>	<i>State</i>	<i>Grant Request</i>	<i>Partner Match</i>	<i>Acres</i>	<i>Grant Funds for USFWS</i>	<i>Coastal Project</i>
Alamo Beach Wetland Restoration and Enhancement	USFWS, Corpus Christi Ecological Field Office	TX	\$75,000	\$90,000	273	Y	Y
Appalachia Ohio Wetlands	Buckeye Hills RC and D	OH	\$75,000	\$108,884	438	N	N
Bare Marsh Wetland Restoration - Coeur d'Alene River WMA	Idaho Department of Fish and Game	ID	\$30,000	\$30,000	430	N	N
Bark Camp Barrens, TN	Tennessee Wildlife Resources Agency	TN	\$75,000	\$367,500	200	N	N
Belgrade Wetlands Restoration	Belgrade Regional Conservation Alliance, Inc.	ME	\$75,000	\$75,000	2,716	N	Y
Big Rivers Corridor Project	The Nature Conservancy	KY	\$75,000	\$222,951	385	N	N
Broad Brook Habitat Preservation	City of Northampton	MA	\$75,000	\$473,128	80	N	Y
Chippewa Bay - St. Lawrence River IBA	Thousand Island Land Trust	NY	\$75,000	\$147,750	188	N	Y
Coastal Palmetto Bay Habitat Restoration Project	National Park Service, The Institute for Regional Conservation	FL	\$75,000	\$58,000	371	N	Y
Cooke Restoration - Pickerel Creek	Ducks Unlimited	OH	\$75,000	\$215,264	98	N	Y
Country Meadows Acquisition	Natural Lands Trust, Inc.	NJ	\$75,000	\$275,906	102	N	Y
Deep Fork NWR	USFWS Deep Fork National Wildlife Refuge	OK	\$75,000	\$75,000	141	Y	N
Detroit Lakes WMD Wetland Restoration - 2012	USFWS - Detroit Lakes Wetland Management District	MN	\$75,000	\$237,960	24,748	Y	N
ECOHIO Wetland Restoration	Zoological Society of Cincinnati, Cincinnati Zoo and Botanical Garden	OH	\$33,050	\$35,875	24	N	N
GCJV Mottled Duck Conservation Plan - Phase 6	Texas R.I.C.E.	TX	\$8,000	\$8,000	200	N	Y
Glacial Ridge NWR Wetland Enhancements - 2012	USFWS - Glacial Ridge National Wildlife Refuge	MN	\$75,000	\$267,650	1,995	Y	N
Grand Forks Prairie Project	USFWS	ND	\$55,000	\$55,000	153	Y	N
Greater Summerhill IBA (Maneri)	Finger Lakes Land Trust, Inc.	NY	\$49,450	\$79,125	83	N	N
Horizon Habitat Enhancement	California Waterfowl Association	CA	\$75,000	\$75,000	70	N	N
Hurds Pond Focus Area Phase I: Hauk-Fry Property	Coastal Mountains Land Trust	ME	\$19,540	\$132,600	163	N	Y
Joel Marsh Renovation	Wisconsin Department of Natural Resources	WI	\$75,000	\$175,000	150	N	N
Kandiyohi County Wetlands	Ducks Unlimited	MN	\$75,000	\$166,722	66	N	N
Maher Farms Restoration	California Waterfowl Association	CA	\$40,188	\$40,188	56	N	N
Maidstone Bends Floodplains	The Nature Conservancy	NH,VT	\$75,000	\$195,055	583	N	N
Mollicy Farms Wetland Restoration	The Nature Conservancy	LA	\$75,000	\$163,500	4,030	N	N
Morris Wetland Management District Wetland Restorations	USFWS - Morris Wetland Management District	MN	\$40,000	\$127,298	1,253	Y	N
Natchaug Marsh Restoration Part 2	Connecticut Department of Environmental Protection	CT	\$66,000	\$90,000	66	N	N
North Shore Land Acquisition - Worm	Flathead Land Trust	MT	\$75,000	\$355,000	190	N	N
Northeastern Indiana Wetland/Grassland Restoration Program, Phase III	Ducks Unlimited	IN	\$75,000	\$199,382	324	N	N
Northern Lakes Habitat Program	Wisconsin Department of Natural Resources	WI	\$68,750	\$578,150	1,514	N	Y
Northwest Wisconsin Phase III	Ducks Unlimited	WI	\$75,000	\$88,052	418	N	N
Perley Mills	Loon Echo Land Trust, Inc	ME	\$75,000	\$150,000	870	N	Y
Pershing SWA Habitat Program	Wisconsin Department of Natural Resources	WI	\$75,000	\$251,592	2,330	N	N
Pymatuning Wildlife Management Area Wetland Project	Ducks Unlimited	PA	\$75,000	\$257,671	433	N	N
Republican River Restoration	Rocky Mountain Bird Observatory	CO,KS	\$75,000	\$50,500	213	N	N
River Raisin - Trachet Easement	Ducks Unlimited	MI	\$52,500	\$53,332	84	N	Y
Robinson Rock Chute Wetland Habitat Improvement	Taylor County Conservation Board	IA	\$60,000	\$155,000	31	N	N
Rockrimmon Road Conservation Area	Southeast Land Trust of New Hampshire	NH	\$55,000	\$55,000	82	N	Y
Rocky Gutter	Buzzards Bay Coalition	MA	\$75,000	\$225,000	350	N	Y
Save the Bay Tidal Marsh Transition Zone Restoration Project: Eden Landing	Save the Bay	CA	\$75,000	\$75,000	50	N	Y
Scuppernong River - Phase IV	Wisconsin Department of Natural Resources	WI	\$75,000	\$91,793	2,235	N	N
South Fork, Forked Deer River, TN	Tennessee Wildlife Resources Agency	TN	\$75,000	\$112,500	309	N	N
Sullivan Gulch Restoration	Oregon Parks and Recreation Department	OR	\$60,000	\$62,082	130	N	Y
TNC NC Clay-Based Bays Project	The Nature Conservancy	NC	\$75,000	\$75,000	455	N	N
Twelve Mile Lake Wetland Project	Iowa Department of Natural Resources	IA	\$75,000	\$633,200	150	N	N
Wetland Enhancement and Restoration at Deal Island WMA	Maryland Department of Natural Resources	MD	\$66,400	\$118,600	2,916	N	Y
			\$3,028,878	\$7,575,209	52,145		

Table 5. Canadian Wetlands Conservation Proposals

<i>Title (Rank)</i>	<i>Province</i>	<i>Recipient</i>	<i>NAWCA Request</i>	<i>Partner Match</i>	<i>Other Contributions*</i>	<i>Securement Acres</i>	<i>Enhancement Acres</i>	<i>Management Acres</i>
British Columbia Pacific Coast and Canadian Intermountain Conservation Program (3)	AB,BC	Ducks Unlimited Canada	\$1,752,456	\$1,752,456	\$200,000	785	475	392,600
Canadian Prairie/Parkland and Western Boreal Habitat Program (1)	AB,BC,MB,NT,SK,YT	Ducks Unlimited Canada	\$12,729,955	\$12,729,955	\$3,000,000	14,164	6,693	4,788,768
Ducks Unlimited Canada/Eastern Habitat JV Wetlands Conservation (2)	NB,NF,NS,ON,PE,QC	Ducks Unlimited Canada	\$2,979,175	\$2,979,175	\$4,283,000	2,266	2,476	1,034,217
NCC Atlantic: Protecting Wetland and Upland Habitat, Eastern Habitat JV (5)	NB,NF,NS,PE	Nature Conservancy of Canada	\$811,589	\$973,411	\$30,000	1,500		24,246
NCC British Columbia: Canadian Intermountain JV and Pacific Coast JV Wetland-Associated Migratory Bird Habitat Conservation (8)	BC	Nature Conservancy of Canada	\$371,012	\$400,000	\$837,184	15	78	4,839
NCC Ontario: Great Lakes Basin Wetland Habitat Conservation Project, Eastern Habitat JV (9)	ON	Nature Conservancy of Canada	\$92,753	\$100,000	\$40,000	254		1,697
NCC Prairies: Protecting Wetlands and Uplands, Prairie Habitat JV (7)	AB,MB,SK	Nature Conservancy of Canada	\$556,518	\$585,506	\$367,000	2,280	133	53,526
NCC Québec: Protecting Wetland and Upland Habitat, Eastern Habitat JV (4)	QB	Nature Conservancy of Canada	\$811,589	\$875,000	\$970,000	1,115		40,000
Potholes Plus Project (6)	MB	Manitoba Habitat Heritage Corporation	\$566,518	\$566,518	\$432,900	4,390	120	123,196
Number of Projects: 9			\$20,671,565	\$20,962,021	\$10,160,084	26,769	9,975	6,463,089

* These funds include funding contributions from Canadian, U.S. and/or other International partners that are in addition to NAWCA and match funding

AB Alberta	NB New Brunswick	NT Northwest Territory	QB Quebec
BC British Columbia	NF Newfoundland/Labrador	ON Ontario	SK Saskatchewan
MB Manitoba	NS Nova Scotia	PE Prince Edward Island	YT Yukon Territory

Table 6. Mexican Wetlands Conservation Proposals

<i>Title (rank)</i>	<i>Applicant Organization</i>	<i>State</i>	<i>NAWCA Request</i>	<i>Partner Contribution</i>	<i>Total</i>	<i>Acres</i>
Conservation of the Pacific Brant Wintering Habitat in the Vizcaino Wetlands, Baja California, Phase II (4)	Pronatura Northwest	Baja CA South	\$203,913	\$364,133	\$568,046	4,950
Habit Protection for Migratory Birds in the Bahia Magdalena-Almejas Wetland Complex, Phase III (5)	Pronatura Northwest	Baja CA South	\$470,429	\$1,021,794	\$1,492,223	1,235
Land Protection for Migratory Waterfowl, Laguna Madre, Phase III (1)	Pronatura Northwest	Tamaulipas	\$348,500	\$385,938	\$734,438	9,389
Multi-Institutional Initiative for the Conservation and Integrated Management of Cuitzeo Lake, Michoacan, Phase II (3)	Ducks Unlimited of Mexico	Michoacan	\$478,867	\$9,144,174	\$9,623,041	4,011
Protection and Sustainable Use of Critical Habitat for Pacific Brant and Other Migratory Birds in Northwest Mexico (8)	Terra Peninsular	Baja CA North, Sonora	\$89,100	\$126,900	\$216,000	123
Protection, Ecological Enhancement and Management of Laguna Santiaguillos, Phase II (7)	Pronatura Northeast	Durango	\$198,100	\$234,850	\$432,950	4,942
Restoration of Freshwater Wetlands as Habitat for Migratory Waterfowl in Tamaulipas (2)	Ducks Unlimited of Mexico	Tamaulipas	\$232,299	\$242,180	\$474,479	1,710
Restoring Habitat for Migratory Waterbirds in the Colorado River Delta Through Wetland Restoration and Allocation of Environmental Flows (6)	Pronatura Northeast	Baja CA North, Sonora	\$441,876	\$596,018	\$1,037,894	1,129
Totals:			\$2,463,084	\$12,115,987	\$14,579,071	27,489

Membership of the Migratory Bird Conservation Commission

<i>Fiscal Year</i>	<i>Secretary of the Interior¹</i>	<i>Secretary of Agriculture²</i>	<i>Secretary of Commerce³</i>	<i>Secretary of Transportation⁴</i>	<i>Administrator of EPA⁵</i>	<i>Members on Part of the Senate</i>			<i>Members on Part of the House</i>			<i>Secretary to the Commission</i>
1929	Roy L. Wilbur	Arthur M. Hyde	Robert P. Lamont			Harry B. Hawes	Peter Norbeck	Sam D. McReynolds	Ernest R. Ackerman			Rudolph Dieffenbach
1930												
1931												
1932									August H. Andresen			
1933	Harold L. Ickes	Henry A. Wallace	Daniel C. Roper			Key Pittman			Roy O. Woodruff			
1934									Chester C. Bolton			
1935												
1936												
1937							Charles L. McNary			James Wolfenden		
1938												
1939			Harry L. Hopkins									
1940								John J. Cochran				
1941			Jessie H. Jones			George L. Radcliffe						
1942												
1943												
1944							Vacant		Walter E. Brehm			
1945		Clinton P. Anderson	Henry A. Wallace				C. Wayland Brooks					
1946	Julius A. Krug											
1947			W. Averell Harriman			A. Willis Robertson		Frank M. Karsten				Arthur A. Riemer
1948		Charles F. Brannon	Charles W. Sawyer				Raymond E. Baldwin					
1949							Vacant					
1950	Oscar L. Chapman											
1951							John W. Bricker					
1952									August H. Andresen			
1953	Douglas McKay	Ezra Taft Benson	Sinclair Weeks									
1954												
1955												
1956	Fred A. Seaton					Thomas C. Hennings, Jr.						
1957												
1958									Leon H. Gavin			
1959			Lewis L. Strauss				Roman L. Hruska					
1960			Frederick H. Meuller									
1961	Stewart L. Udall	Orville L. Freeman	Luther H. Hodges			Lee Metcalf						
1962												
1963												
1964												
1965			John T. Connor						George A. Gooding			
1966									Silvio O. Conte			F.G. Spoden Jr.
1967			Alexander B. Trowbridge									
1968				Alan S. Boyd								
1969	Walter J. Hickel	Clifford M. Hardin		John A. Volpe			Henry L. Bellman	John D. Dingell				
1970						Joseph D. Tydings						

U.S. Department of the Interior
U.S. Fish and Wildlife Service
Division of Realty
realty.fws.gov

November 2014

